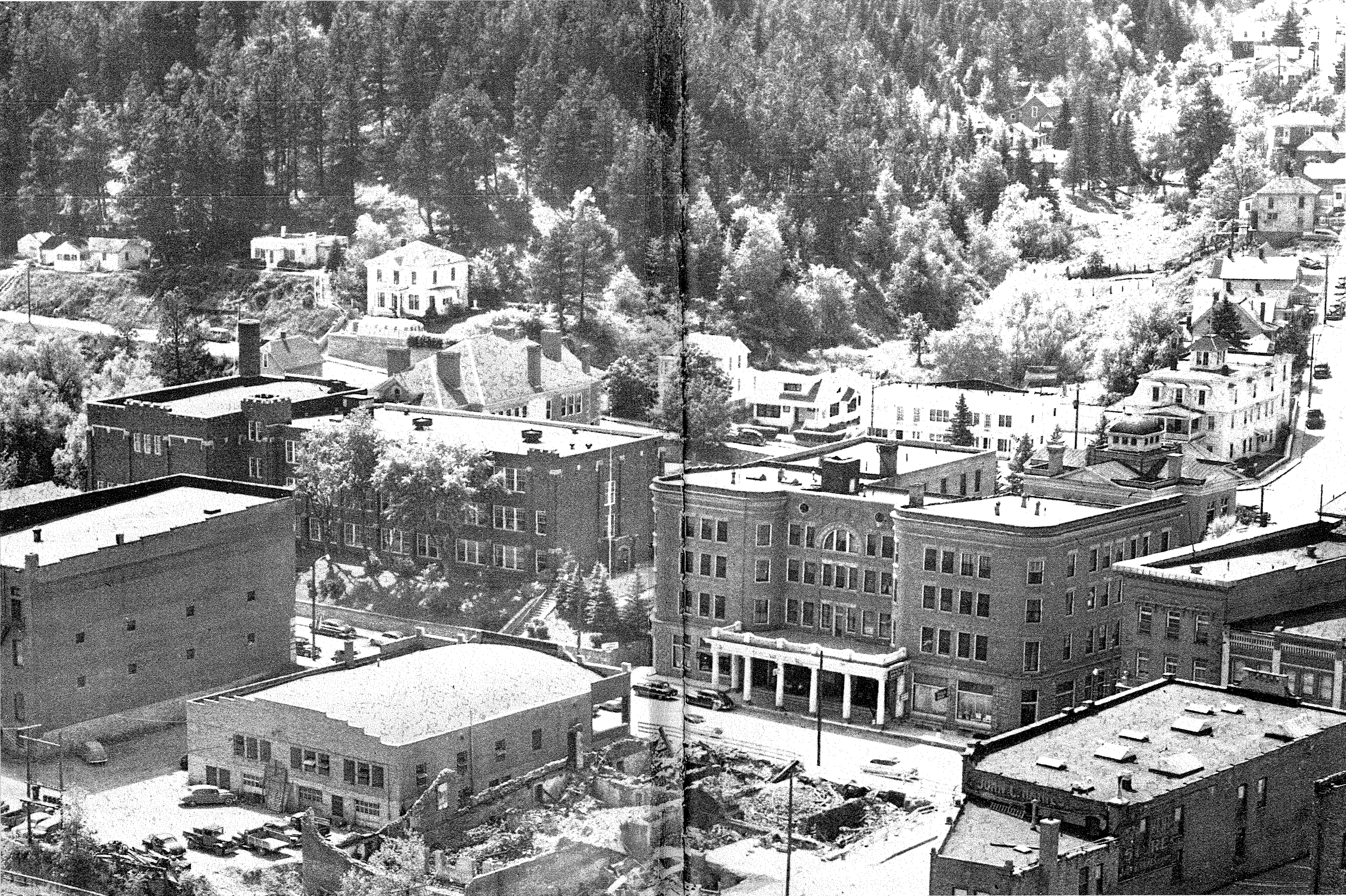


1953
400



Introduction

Each century has presented man with hard decisions. In the eighteenth century man had to decide whether he wanted freedom or slavery. The American and French Revolutions resulted. In the nineteenth century man decided he wanted to be governed by a nation which employed the language, customs, and traditions he knew. The resulting nationalist revolutions of 1848 flared across Europe, their effects felt even in the settlement of World War I.

Now that same nationalism is appearing in Middle Eastern and Far Eastern countries. The communists are trying to capitalize on the movement--to use it as a lever in expanding their influence. The West is trying to stem this communist influence while at the same time trying to prevent World War III.

The hard decision of the twentieth century faces man. A mistake in foreign policy might turn the cold war into a hot war. The correct decision in foreign policy might admit of only one choice--war.

Just as the thought of atomic war is horrifying so, in an opposite way, the thought of atomic progress is fascinating. We of the annual staff have perhaps been guilty of oversimplification in viewing man's decision of the twentieth century. One obvious decision is possible--war; another decision might be the conquering of space. We prefer the latter, prefer it because of the tremendous new horizons which it would open to man's thinking.

Whatever man's decision, it will be fateful, portentous. We hope the students of D. H. S. will be part of a glorious future. We hope that at least some of them will be leaders of tomorrow--in democracy, in medicine, in physics, in the humanities, and in the seldom dramatic business of good living. With this in mind we consider ourselves pioneers of the future. No matter what decision man makes in this twentieth century we know that the students of D. H. S.--pioneers of the future--will face it with the necessary courage and imagination.

--Franklin Brainard

1953 Staff

EDITOR IN CHIEF

Bob Thoresen

ASSISTANT EDITORS

David Miller
Kay Roberts
Betty Wells

BUSINESS MANAGERS

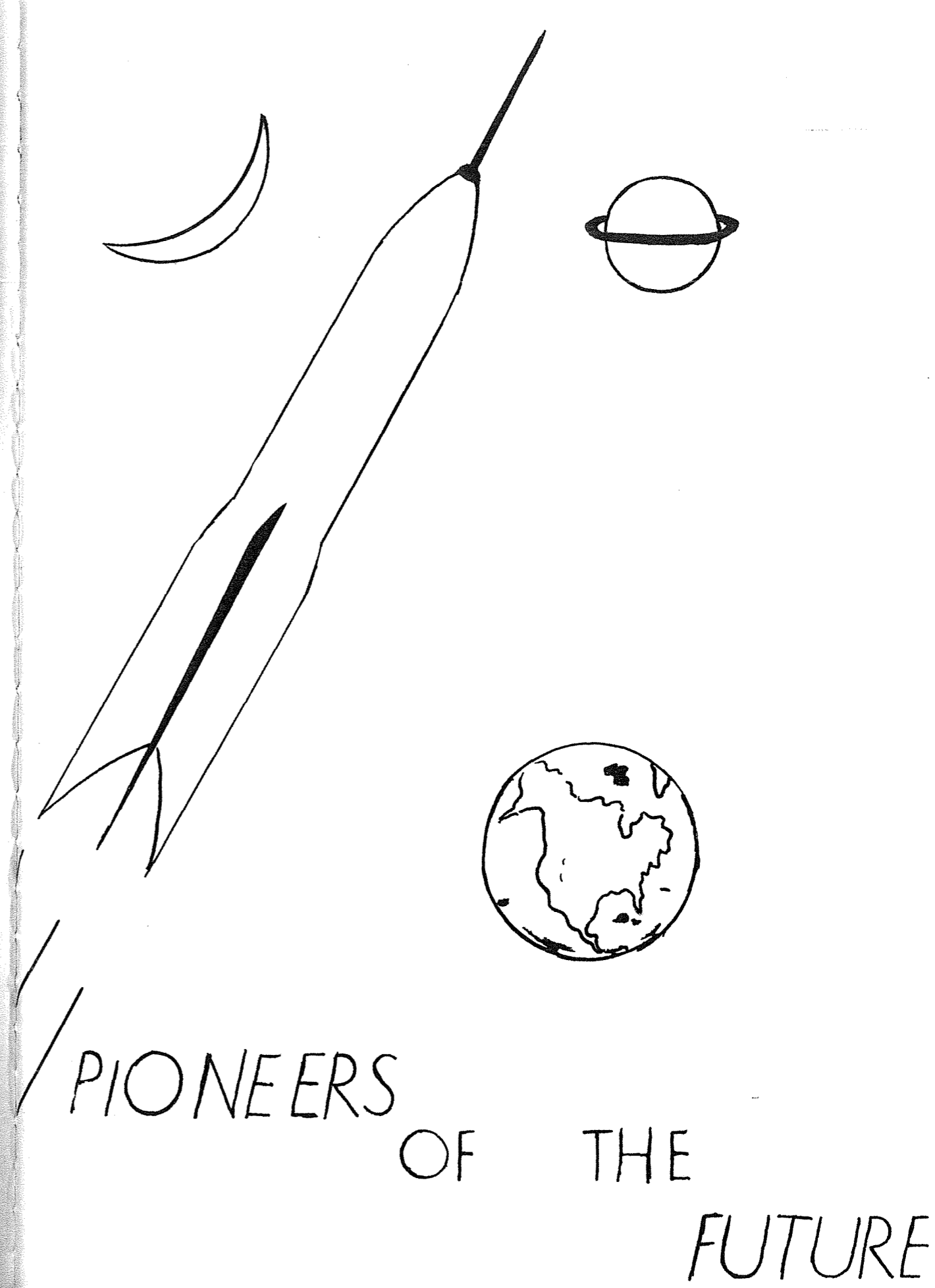
Laverne Emery
Paul Snyder

EDITORIAL CHAIRMAN

Janet Burke

ADVISOR

Franklin Brainard



PIONEERS

OF THE

FUTURE

Dedication

The production of an annual involves a tremendous number of hours of planning and work. Most of the members of a school system know the teacher and students responsible for this school year record. They know, too, how necessary is the encouragement and backing given by the school's administration.

Behind the scenes of year book production, however, are a few people who seldom gain recognition for their services to the annual. It is to these people that the staff wishes to dedicate this annual.

TO:

Mr. Fassbender, affectionately called, "Joe." For many years "Joe" has taken our annual pictures. We find his excellent photography, his keen sense of humor, "und" his German accent indispensable.

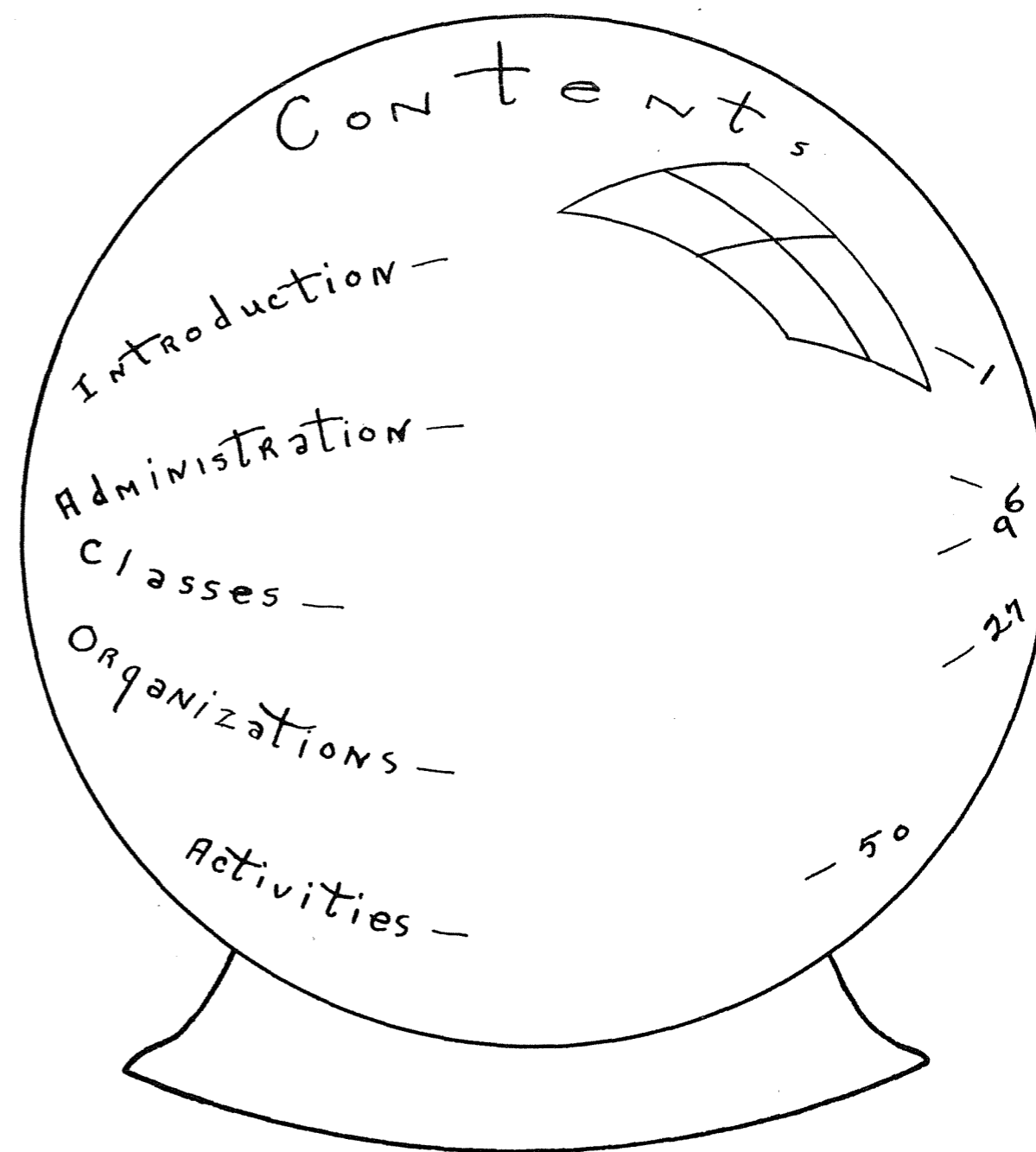
TO:

Miss Lola Kersten, school secretary, who handles the Bear Log money with the perfect efficiency she applies to all her duties.

TO:

The school board which unbeknown to most students, parents, and teachers provides generous financial support to the annual every year.

"Gazing Into the Future"



Administration



R. H. KRUG
Principal; North Central College, Naperville, Illinois, B.A.; University of Wisconsin, M.A.



H. S. BERGER
Superintendent; Northeast Missouri State Teachers, B.S.; University of Missouri, M.A.



MISS LOLA KERSTEN
Secretary



LA VERN CLARK
Instrumental Music; Black Hills Teachers College, B.E.



MARY CRAIG
Music and Dramatics; Black Hills Teachers College, B.A.

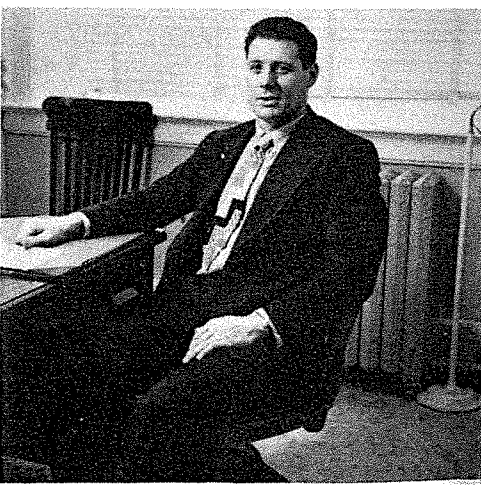


EDNA FERGUSON
English; Librarian; Arkansas A. & M., B.A.

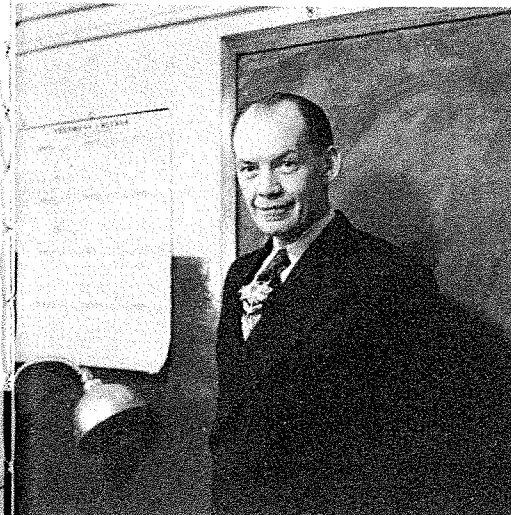
Faculty



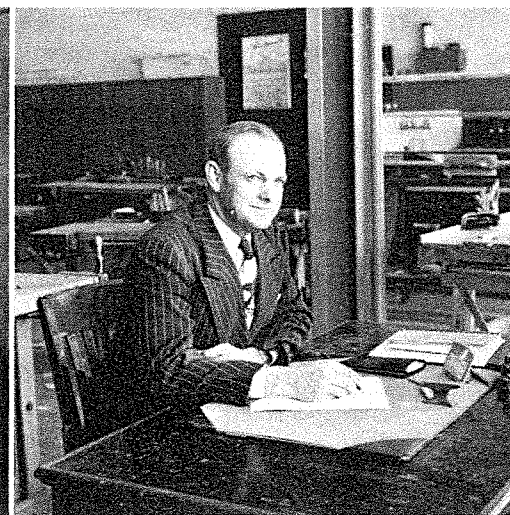
ANNA MAE BIRCH
English; Latin; Synodical College, Fulton, Missouri, A.A.; Central College, Layette, Missouri, B.S.



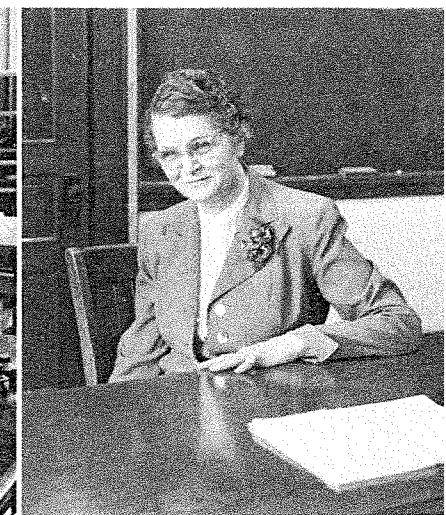
GLENN BURGESS
Physical Education; Black Hills Teachers College, B.S.



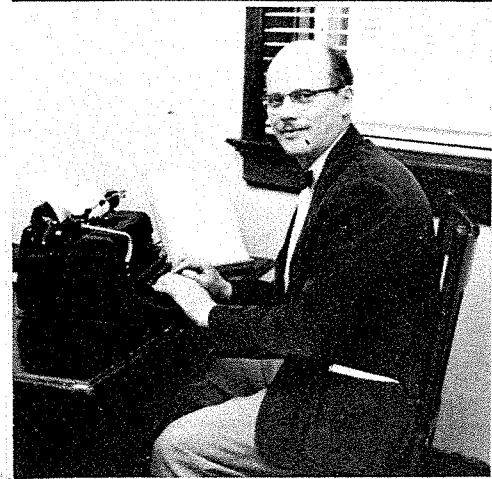
STEWART FERGUSON
Athletics; Social Science; Dakota Wesleyan, B.A.; Louisiana State, M.A.



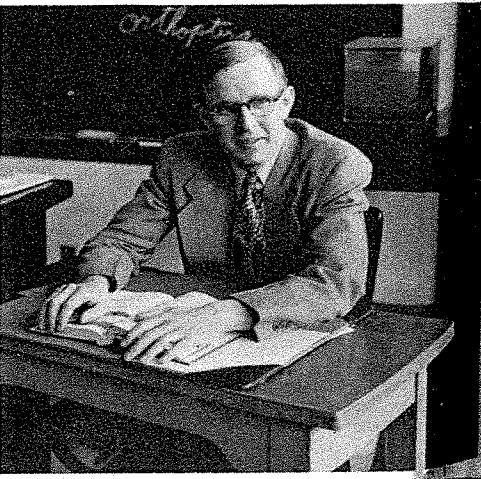
ORA HORSFALL
Manual Arts; Plattsville State, Plattsville, Wisc., B.E.



LUCIE JENSEN
Mathematics, University of Washington, B.S.



FRANKLIN E. BRAINARD
English; Social Science; Publications; Jamestown College, North Dakota, B.A.; University of North Dakota, M.A.



GEORGE CONKLIN
Science; Mount Union College, Alliance, Ohio, B.A.



KATHERINE KRANICK
Commerce; Northern State Teachers College, B.S.; Minnesota University; Denver University.



ELSIE KRUG
Girls' Physical Education; University of South Dakota, B.A.



JEAN VAN HEUVELEN
Home Economics; Dakota Wesleyan, B.S.

SENIORS

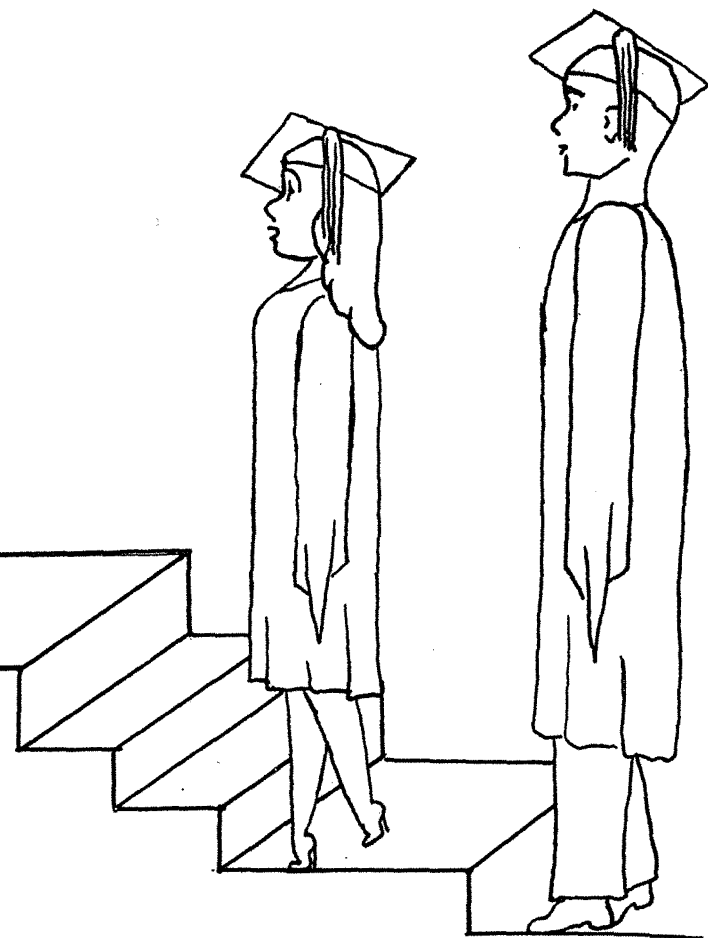
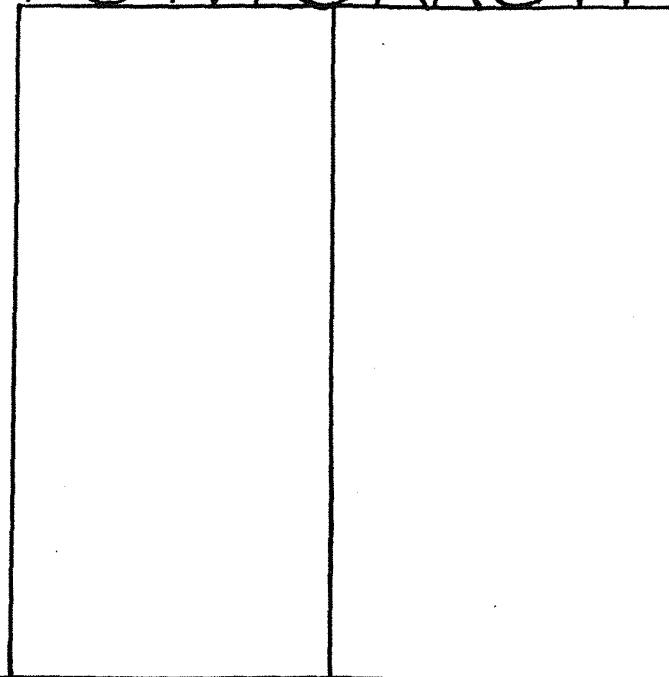


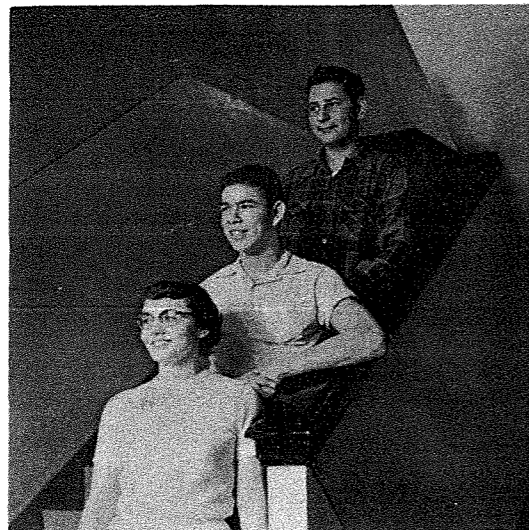
SCHOOL BOARD: Standing--E. Pontius; H. S. Berger, Superintendent; G. Palmer. Seated--C. O. Gorder, Treasurer; Sylvia Baggaley, President; Lola Kersten, Secretary; M. Morris; H. Mitchell.

STUDENT COUNCIL: Left to right--J. Hennen; D. Allen; D. Dunwiddie, President; C. Richards; R. H. Krug, Principal; E. Holso; G. Williamson, W. Williamson; D. Sears.



TO MORROW





Senior Class: Bottom to top--Secretary, Marie Beshara; President, Lavern Emery; Vice-president, Roger Geist.

Senior History

Class Flower--American Beauty Rose
 Class Motto--"We Are The Architects Of Our Own Fate"
 Class Colors--Aqua and Silver

The Freshman class of 1949 started out with one of the biggest classes in the history of D. H. S. The graduation class of today consists of a grand total of 43!

The honor of class queens went to Janet Burke, Betty Kettelhut, Elsie Daniels and Marie Beshara. The Bear Day festivities had Janet Burke as All-School Queen attended by Betty Kettelhut and Betty Mae Oestrich.

The class president honors went to Carlyle Richards, Barry Martin, Paul Snyder and Senior president Lavern Emery.

The Howe cup was awarded to Margot Reed, Freshman year and Carol Pigney, Sophomore year.

The Junior Class play, "Spring Fever", was very successful.

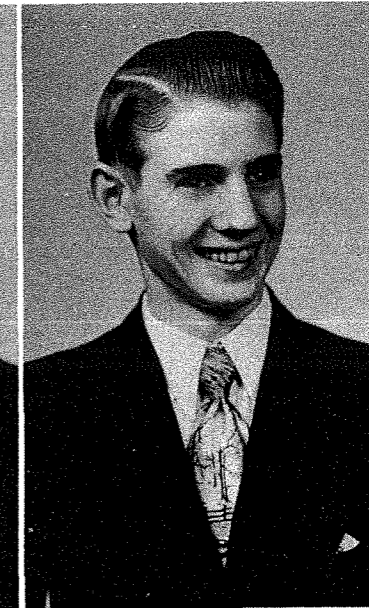
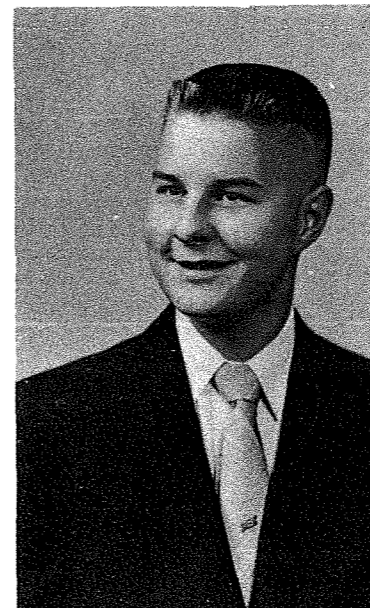
Boys' State representative honors went to Barry Martin and Joe Slack. Betty Kettelhut was honored as Girls' State representative.

The annual banquet and prom held in the setting of "A Southern Plantation" showed originality and hard work.

This year the honor of "South Dakota's Prettiest Cheerleader" went to Janet Burke.

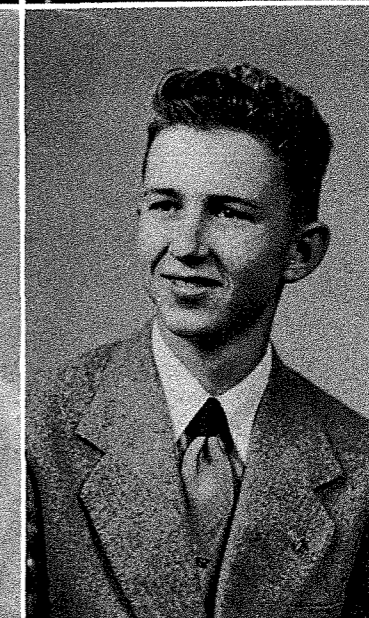
The class of '53 wishes to thank all those who helped make their high school career unforgettable.

Bill Berry--Boys' Basketball 2; Football 1; Weight Teams 1; Volleyball 1,2,3,4; Mixed Chorus 1,2,3,4; Boys' Glee Club 1,2,3,4; Class Plays 3; Christmas Plays 1,2,3,4; Dramatic Club 1; Bruin Staff 3,4; Bear Log Staff 4; Bruin Editorial Chairman 4.



Perry Casteel--Boys' Basketball 2,4; Weight Teams 2,4; Tumbling 4; Track 2,4; Volleyball 1,2,4; General Glee Club 4; Special Glee Club 4; Mixed Chorus 4; Boys' Octette 4; Mixed Octette 4; Class Officer 2; Christmas Plays 3,4; Music Clinic 4; Band 2,4; Pep Band 2,4.

Marie Beshara--General Glee Club 1,2,3,4; Special Glee Club 2,4; Mixed Chorus 3,4; a cappella 3,4; Mixed Octette 4; Class Play 3; Class Officer 4; Christmas Plays 1,2,3,4; Class Queen 4; Extemporaneous Speaking 1,2,3,4; Debate 1,2,3,4; NFL 1,2,3,4; NFL Officer 4; DAR Representative 4; Bruin Staff 1,2,3,4; Bear Log Staff 4; Pep Club 4.



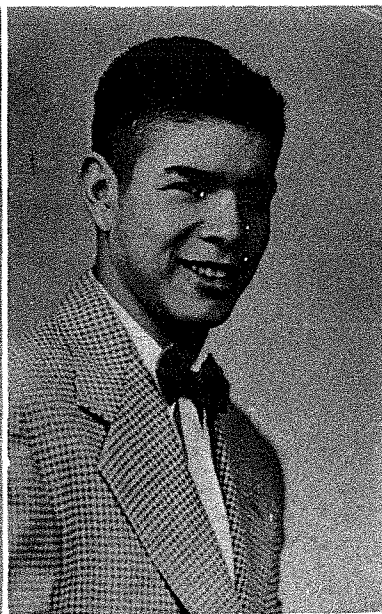
Bob Chyba--Boys' Basketball 1,2; Football 1; Weight Teams 1,2; Tumbling 1,2; Mixed Chorus 1,2,3,4; Boys' Octette 4; Class Play 3; Christmas Plays 1,2,3,4; SDHSPA 3; Dramatic Club 1; Student Council 1; Bruin Staff 2,3,4; Bear Log Staff 2,3,4.

Janet Burke--Girls' Basketball 1,2,3,4; G.A.A. 1,2,3,4; Baseball 1,2; General Glee Club 1,2,3,4; Special Glee Club 2,4; Mixed Chorus 2,4; a cappella 4; G.A.A. officer 4; Class Play 3; Class Officer 3; Christmas Play 2,3,4; Cheerleader 4; Class Queen 1; All-School Queen 4; Volleyball 1,2,3,4; SDHSPA 3,4; Dramatic Club 2; Declamatory 2; Bruin Staff 3,4; Bear Log Staff 3,4; Bruin Exchange Editor 4; Bear Log Editorial Chairman 4; Quill & Scroll 4; Pep Club 4.



Elsie Daniels--Girls' Basketball 1,2,3,4; G.A.A. 1,2,3,4; Baseball 1,2; General Glee Club 1,2,3,4; Special Glee Club 1,2,4; Mixed Chorus 1,2,3,4; a cappella 3,4; Girls' Octette 4; G.A.A. Officer 3; Class Play 3; Class Officer 3; Christmas Plays 1,2,3,4; Cheerleader 4; Class Queen 3; SDHSPA 3,4; Dramatic Club 1; Declamatory 2; Debate 1,2,3; NFL 1,2,3,4; NFL officer 4; Student Council 3; Bruin Congress 2,3,4; Bruin Staff 1,2,3,4; Bear Log Staff 4; Bruin Editor-in-chief 4; Quill & Scroll 3,4; Math. Tournament 2; Pep Club 4; Volleyball 1,2,3,4.

Lois Davis--General Glee Club 1,2,3,4; Special Glee Club 2,4; Mixed Chorus 2,3,4; a cappella 3,4; Christmas Plays 2,3.



Lavern Emery--Boys' Basketball 3; Football 3,4; "D" Club 3,4; Track 3,4; Baseball 3,4; Boys' Glee Club 3,4; Mixed Chorus 3,4; Class Officer 4; Christmas Plays 3,4; SDHSPA 3,4; Bruin Staff 3,4; Bear Log Staff 4.

Beverly Dye--General Glee Club 1,2,3; Special Glee Club 1,2; Mixed Chorus 2,3; a cappella 3; Class Play 3; Christmas Plays 1,2,3; Band 1,2,3; Pep Band 2,3; Pep Club 1.



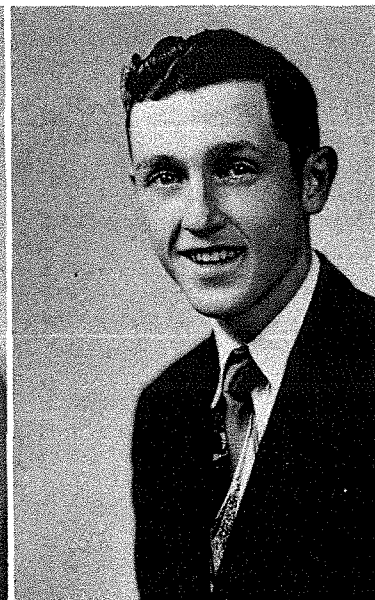
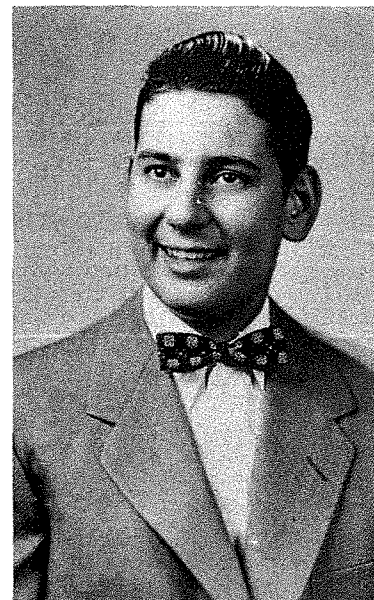
Florentine Engler--General Glee Club 1,2,3,4; Special Glee Club 2; Mixed Chorus 3,4; a cappella 3,4; Christmas Plays 1,2,3,4.

Shirley Elliott--Entered School 3 Year; G.A.A. 3; Volleyball 3; General Glee Club 3,4; Mixed Chorus 4; a cappella 3; Class Plays 3; Christmas Plays 3,4; Pep Club 4.



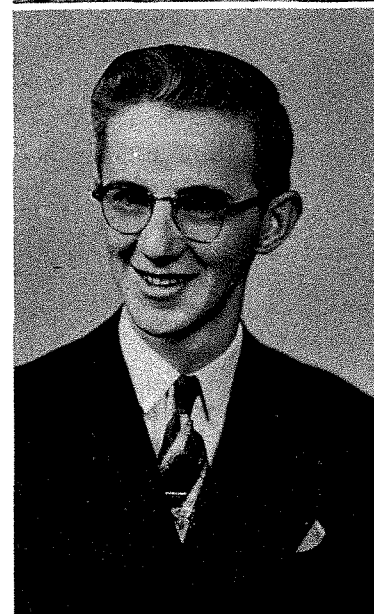
Ida Franzel--Girls' Basketball 1,2,3,4; G.A.A. 1,2,3,4; Baseball 1,2,3; Volleyball 1,2,3,4; Bruin Staff 2; Pep Club 4.

Roger Geist--Boys' Basketball 1,2; Weight Teams 1,2; Class Play 3; Class Officer 3; Band 1,2,3,4; Pep Band 1,2,3,4; Clarinet Quartet 4.



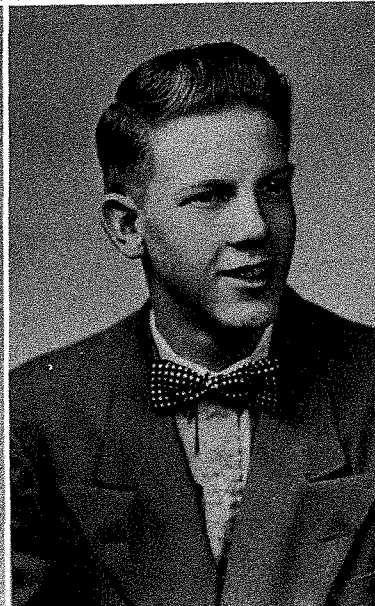
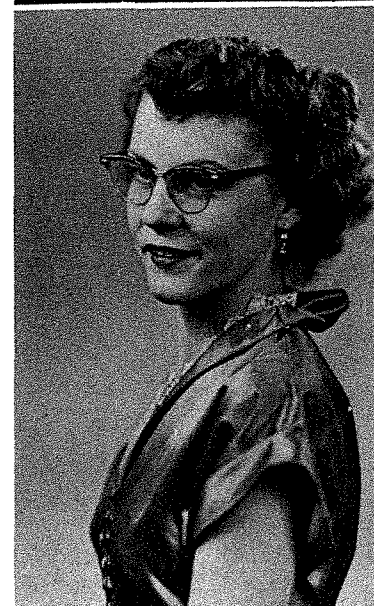
Darrell Iwan--Weight Teams 4; Track 4; Volleyball 3,4; Band 3,4; Pep Band 3,4.

Elmer Holso--Boys' Basketball 1,2,3,4; Football 2; Weight Teams 1,2,3,4; Boys' Glee Club 2,3; Mixed Chorus 2,3; Christmas Plays 3; Dramatic Club 1,2; Student Council 4; Bruin Staff 4.



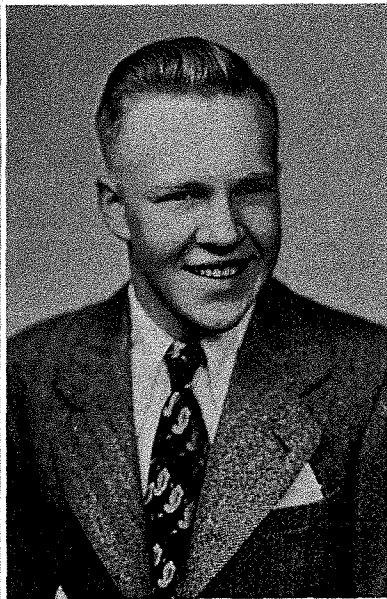
Janet Jacobson--General Glee Club 1,2,3,4; Special Glee Club 2,4; Mixed Chorus 2,3,4; a cappella 3; Christmas Plays 1,2,3,4; Bruin Staff 4; Band 1,2,3,4; Pep Band 1,2,3,4; Brass Sextet 4; Pep Club 4.

Delores Hudson--Girls' Basketball 1,2,3,4; G.A.A. 1,2,3,4; Tumbling 1,2,3,4; G.A.A. 1,2,3,4; General Glee Club 1,2,3,4; Special Glee Club 1,2,4; Mixed Chorus 1,2,3,4; a cappella 3,4; Girls' Octette 4; G.A.A. Officer 4; Class Play 3; Christmas Plays 1,2,3,4; Dramatic Club 2; Bruin Staff 4; Band 1,2,3,4; Pep Band 1,2,3,4; Pep Club 4; Baseball 1,2,3.



Bob Jones--Boys' Basketball 1,2,3; Weight Teams 1,4.

Betty Kettelhut--Girls' Basketball 1,2,3,4; Tumbling 1,2,3,4; G.A.A. 1,2,3,4; Baseball 1,2,3; Volleyball 1,2,3,4; General Glee Club 1,2,3,4; Special Glee Club 1,2,4; Mixed Chorus 1,2,3,4; a cappella 1,3,4; Girls' Octette 4; G.A.A. Officer 4; Class Play 3; Christmas Plays 1,2,3,4; Cheerleader 4; Class Queen 2; All-School Attendant 4; SDHSPA 3,4; Dramatic Club 2; Girls' State Representative 3; Student Council 2; Bruin Staff 2,3,4; Bear Log Staff 4; Bruin Assistant Editor 4; Quill & Scroll 4; Band 1,2,3,4; Pep Band 1,2,3; Clarinet Quartet 4; Pep Club 4; Music Clinic 4; Badminton Champion 4.



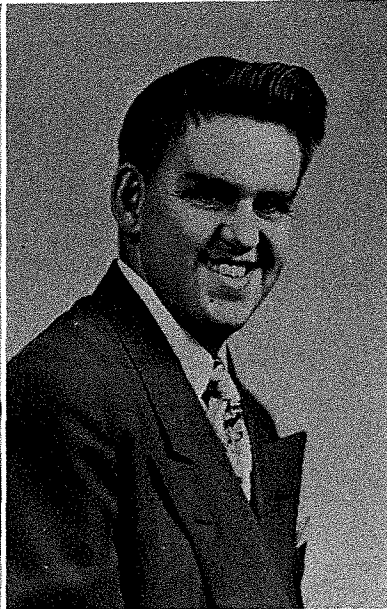
Jim Major--Football 1,2,3,4; "D" Club 3,4; Track 2,3,4.

Norma Jeanne LaDue--Girls' Basketball 1,2; G.A.A. 1,2,3; Baseball 1,2; Volleyball 1,2,3; General Glee Club 1,2,3,4; Special Glee Club 3,4; Mixed Chorus 1,4; a cappella 3,4; Class Play 3; Christmas Plays 1,2,3,4; Bruin Staff 1,2,3,4; Pep Club 4; Majorette 1,2,3,4.



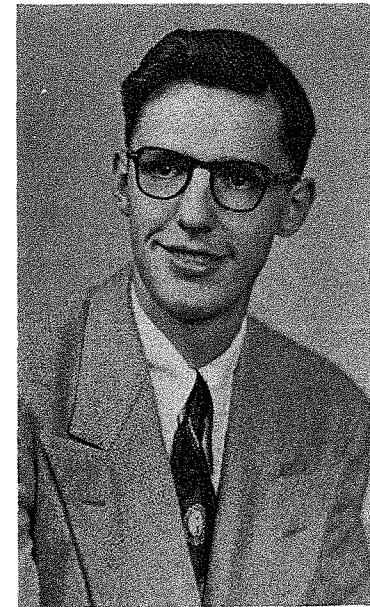
Barry Martin--Boys' Basketball 1,2; Football 1,2,3,4; Weight Teams 1; "D" Club 2,3,4; Baseball 1,2; Boys' Glee Club 2; Mixed Chorus 2; Volleyball 1,2,3,4; Class Officer 2; Dramatic Club 2; Boys' State Representative 3; Student Council 3; Student Council Officer 3; Bruin Staff 2,3,4; Bear Log Staff 3,4.

Carla Linstrom--Girls' Basketball 1,2,3,4; G.A.A. 1,2,3,4; Baseball 1,2,3; Volleyball 1,2,3,4; General Glee Club 1,2,3,4; Special Glee Club 2,3; Mixed Chorus 4; a cappella 3; Class Plays 3; Christmas Plays 1,2,3,4; Bruin Staff 4; Pep Club.



Douglas Miklethun--Football 1; Boys' Glee Club 4; Mixed Chorus 4; Volleyball 1,2; Christmas Play 4.

David Miller--Mixed Chorus 1,2,3,4; Boys' Octette 4; Class Play 3; Christmas Plays 1,2,3,4; SDHSPA 3,4; Dramatic Club 1,3; Bruin Staff 3,4; Bear Log Staff 3,4; Bear Log Assistant Editor 3,4; Volleyball 1,2,3,4.



Fred Pascoe--Boys' Basketball 3; Football 2,3; Weight Teams 1.

Sharon Moore--Girls' Basketball 1,2; Tumbling 1,2,4; G.A.A. 1,2,4; General Glee Club 1,2,4; Special Glee Club 2; Mixed Chorus 1,2,4; Girls' Octette 2; Christmas Plays 1,2,4; Cheerleader 4; Bruin Staff 3,4; Pep Club 4.



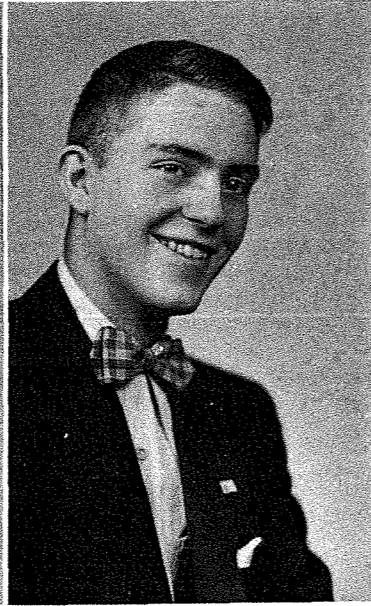
Carol Pigney--Girls' Basketball 1,2,3; Tumbling 1; G.A.A. 1,2,3,4; Special Glee Club 1,2,4; Mixed Chorus 1,2,3,4; a cappella 3; Class Plays 3; Christmas Plays 1,2,3,4; Gym Exhibit Accompanist 1,2; SDHSPA 3; Dramatic Club 2,3; Declamatory 4; Debate 1; Student Congress 4; Bruin Staff 2,3,4; Bruin Exchange Editor 3; Quill & Scroll 4; English Awards 1,2,4; Howe Scholarship 1; Pep Club 4.

Betty Oestreich--Girls' Basketball 1; G.A.A. 1,2; Baseball 1; General Glee Club 1,2,4; Special Glee Club 2; Christmas Plays 1,2; All-School Attendant 4.



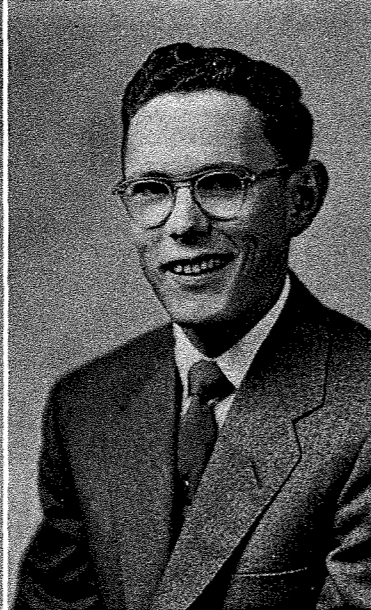
Barbara Redinger--Girls' Basketball 1,2,3,4; G.A.A. 1,2,3,4; Baseball 1,2,3; Volleyball 1,2,3,4; General Glee Club 1,2,3,4; Special Glee Club 2; a cappella 3,4; Class Plays 3; Christmas Plays 2,3; Dramatic Club 2; Bruin Staff 2,3,4; Bear Log Staff 4; Library 4; Pep Club 4.

Carlyle Richards--
Football 2; Mixed
Chorus 1,2,3,4; Mixed
Octette 4; Boys' Glee
Club 1,2,3,4; Class
Play 3; Class Officer
1; Christmas Plays 1,
2,3,4; SDHSPA 3;
Dramatic Club 3; Stu-
dent Council 4; Bruin
Staff 3,4; Bear Log
Staff 3,4; Bruin Fea-
ture Editor 3,4.



Joe Slack-- Boys'
Basketball 1,2,3,
4; Football 1,2,3,
4; Weight Teams 1,2;
"D" Club 3,4; Track 3,
4; Mixed Chorus 1,2,3,
4; Boys' Octette 4;
Boys' Glee Club 1,2,3,
4; Class Play 3;
Christmas Plays 1,2,
3,4; Boys' State Rep-
resentative 3.

Ann Lu Schmiedt--
Girls' Basketball 1,2;
G.A.A. 1,2,3,4; Base-
ball 1,2,3; Volleyball
1,2,3,4; General Glee
Club 1,2,3,4; Special
Glee Club 2; a cappella
3; Class Plays 3;
Christmas Plays 2,3;
Dramatic Club 2; Pep
Club 4.



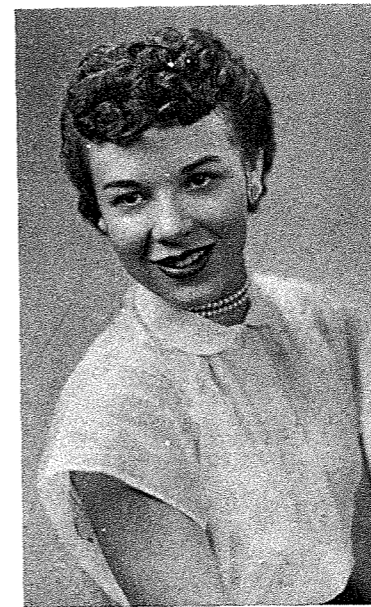
Paul Snyder--Boys'
Basketball 1,2,4; Foot-
ball 1,2,3,4; Weight
Teams 1,2; "D" Club
1,2,3,4; Track 1,2;
Mixed Chorus 3,4;
Boys' Quartet 4; Boys'
Glee Club 3,4; Class
Plays 3; Class Officer
3; Christmas Plays 2,
3,4; Student Council 2;
Bruin Staff 3; Band 1,
2,3,4; Pep Band 1,2,3.

Garnet Schuster--
Girls' Basketball 1,2;
Tumbling 2; G.A.A. 2;
Baseball 1; Volleyball
1,2; General Glee Club
1,2.



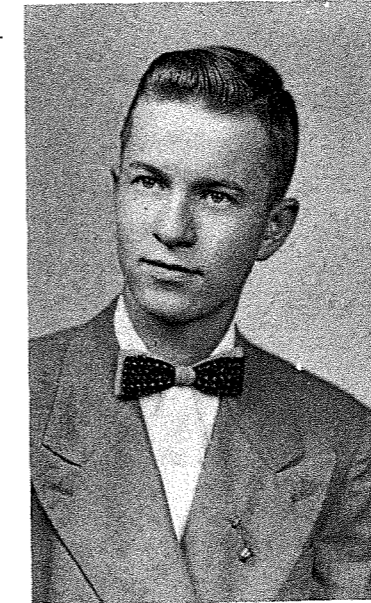
Yvonne Spaulding--
Girls' Basketball 1,2,
3; G.A.A. 1,2,3; Base-
ball 1,2; General Glee
Club 1,2,3,4; Special
Glee Club 1,2,4; Mix-
ed Chorus 1,2,3,4; a
cappella 1,3,4; Class
Play 3; Christmas
Plays 1,2,3,4; Extem-
poraneous Speaking 1,
2,3; Dramatic Club 1,
2,3; Declamatory 3,4;
Debate 1,2,3,4; NFL 2,
3,4; Student Congress
4; Bruin Staff 1,2,3,4;
Bruin Feature Editor
4; Volleyball 1,2,3;
Pep Club 4.

Faye Spindler--Girls'
Basketball 1,2; Tum-
bling 1,2; G.A.A. 1,2,
3; Baseball 1,2; Vol-
leyball 1,2,3; General
Glee Club 2; Special
Glee Club 1; a cappella
3; Class Play 3;
Class Officer 1;
Christmas Plays 2,3.



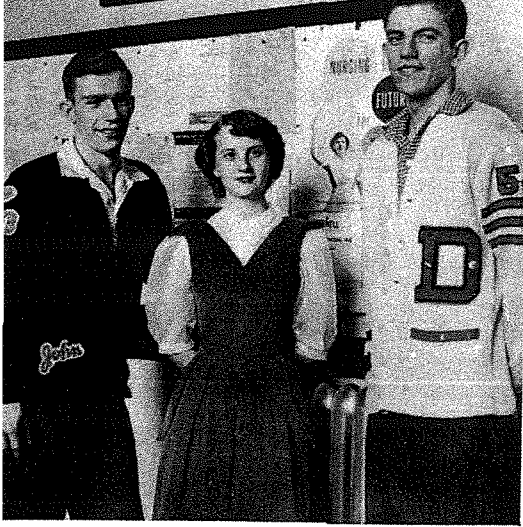
Margaret Vancas--
Girls' Basketball 1,2;
Tumbling 1; G.A.A. 1,
2,3; General Glee Club
1,2,3,4; Special Glee
Club 2,4; Mixed Chorus
2,3,4; a cappella
3,4; Class Play 3;
2,3; Mixed Chorus 2,3,
4; a cappella 3,4;
3,4; Class Plays 3;
Christmas Plays 1,2,
3,4; Dramatic Club 2,
3; Bruin Staff 4; Bear
Log Staff 4; Pep Club
4.

Bob Thoresen--Foot-
ball 1,2,3; Weight
Teams 4; Track
2,3,4; Mixed Cho-
rus 1,2,3,4; Boys'
Glee Club 1,2,3,4;
Boys' Octette 4; Mix-
ed Octette 2; Class
Play 3; Christmas
Plays 1,2,3,4; SDHSPA
2,3,4; Dramatic Club
1; Bruin Staff 2,3,4;
Bear Log Staff 3,4;
Bruin Sport Editor 3;
Bear Log Editor 4;
Bear Log Assistant
Editor 3; Volleyball 1,
2,3,4.



Kathryn Jo Wagner--
Tumbling 1; G.A.A. 1,
2,3,4; Baseball 1,2,3;
Volleyball 1,2,3,4;
General Glee Club 1,
2,3,4; Special Glee 2,
4; a cappella 3,4; Class
Plays 3; Christmas
Plays 1,2,3; Band 1,2,
3,4; Pep Band 1,2,3,4;
Pep Club 4.

Not pictured: Jacqueline Backer, Ray Kramer, and Fred Welke.



John Smiley, Vice President;
Loyola Moser, Secretary; Da-
vid Klein, President.

Having completed three years of their high school career, the juniors have accomplished much. Their class play, "The Little Dog Laughed," was one of the more highly successful plays put on in D. H. S.

The junior boys are known for their athletic abilities. In basketball, five junior boys composed the first five of the "A" Squad.

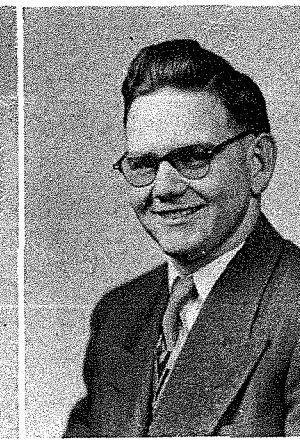
Out of the junior class, Eddie Morris and Reece Palmer were chosen as representatives to Boys' State while Bonnie Roebuck was selected to represent Deadwood at Girls' State.



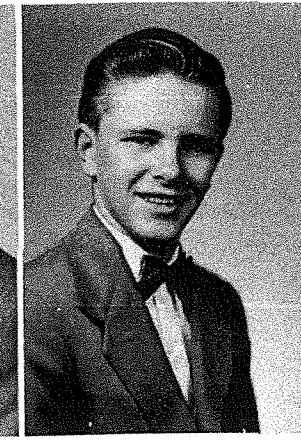
Cal Geary



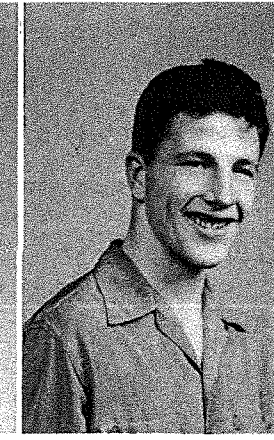
Virginia Gnirk



Vernon Gutsche



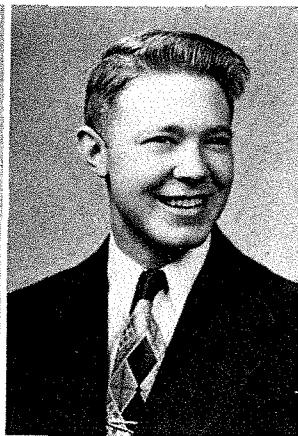
Alfred Johnson



Bill Jones



Anna Belle Alexander



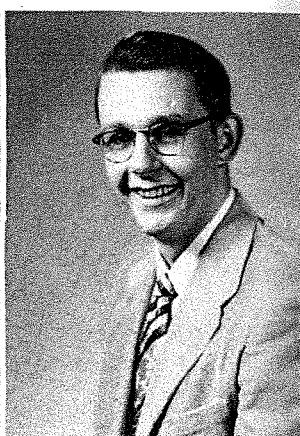
Mike Averill



Marlene Beringer



Jeannine Cowles



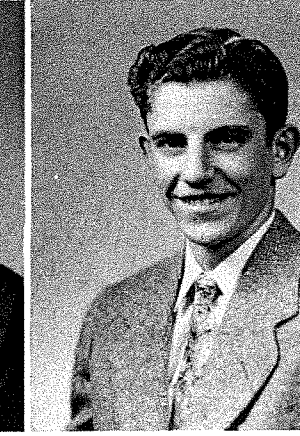
Dick Dunwiddie



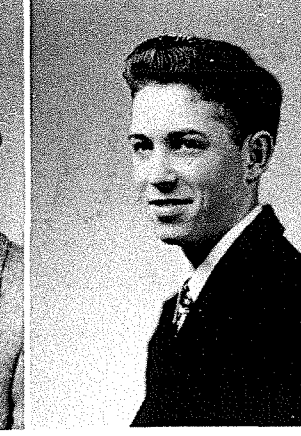
Ann Jordan



Shirley Kettelhut



David Klein



Kenneth Lester



Marilyn Maresh

Terry Dyvig

Lorretta Eatherton

Shreda Farnsworth

Donald Gabel

Georgia Gabel

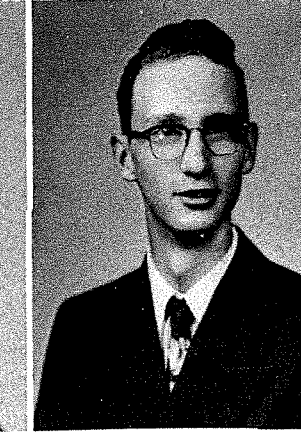
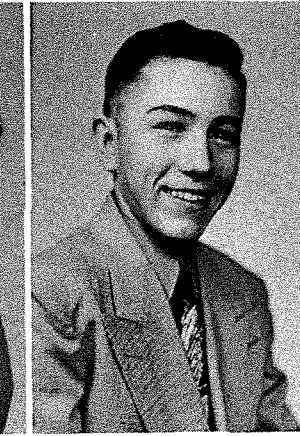
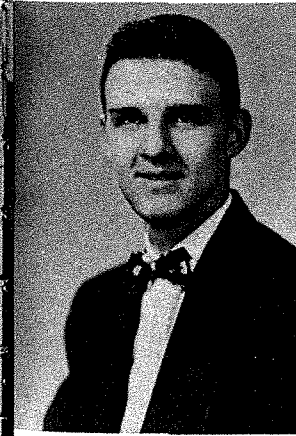
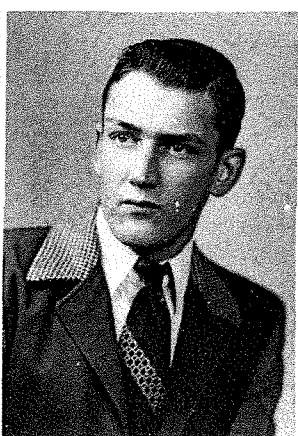
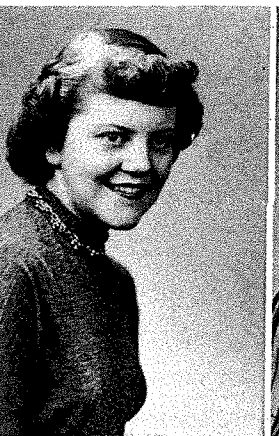
Eddie Morris

Ellen Morris

Carl Moser

Fred Moser

Loyola Moser





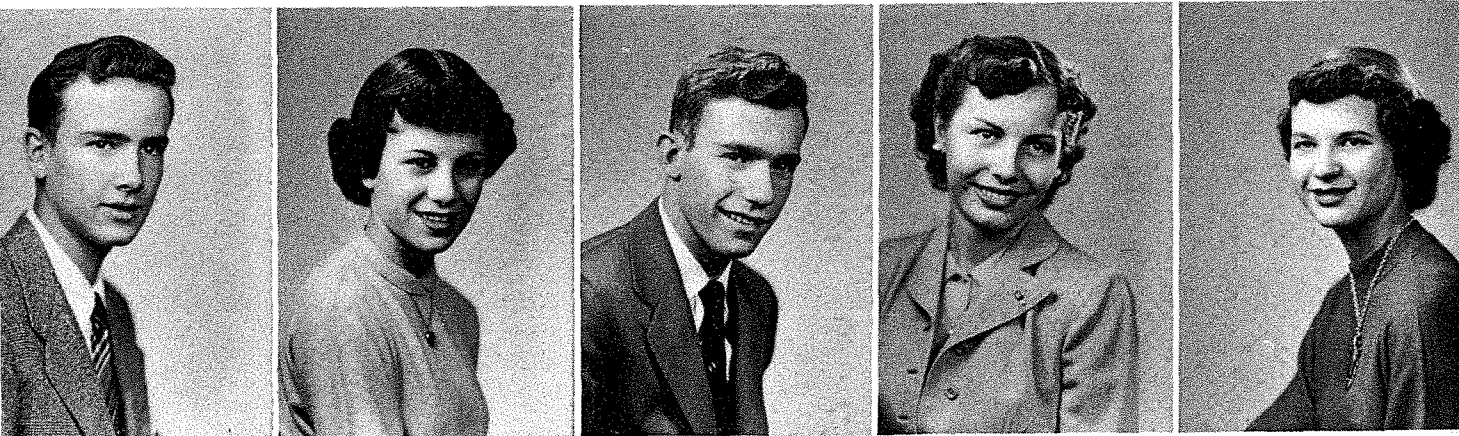
Reece Palmer

Marcia Pavlich

Kay Roberts

Bonnie Robuck

Carole Rypkema



Jack Semmons

Kay Shama

John Smiley

Charlene Vares

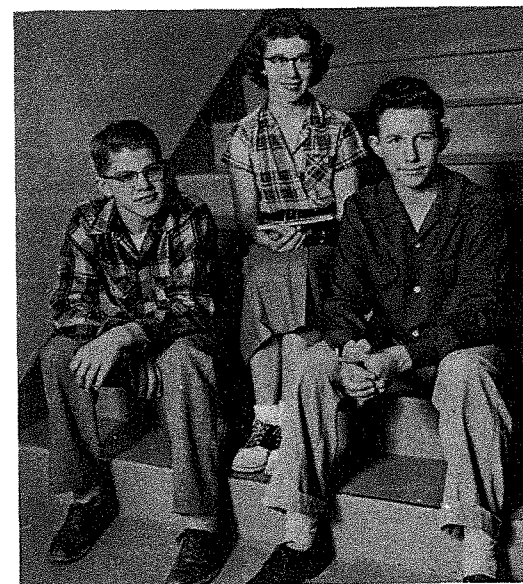
Frances Wagner

Betty Wells

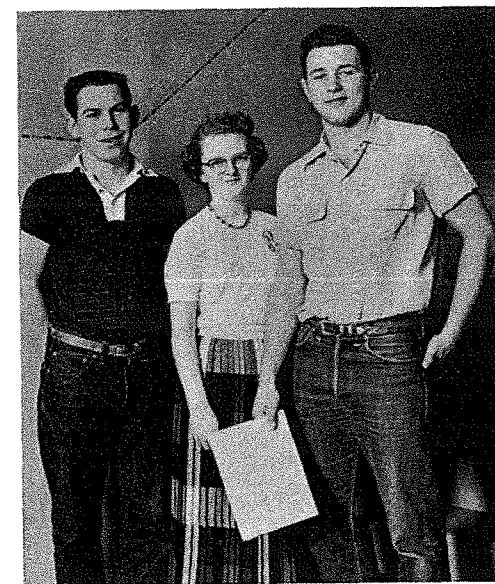
Gail Williamson



Not Pictured: Richard Berry, Raymond Hobbs, Ronald Sargent, Buddy West.



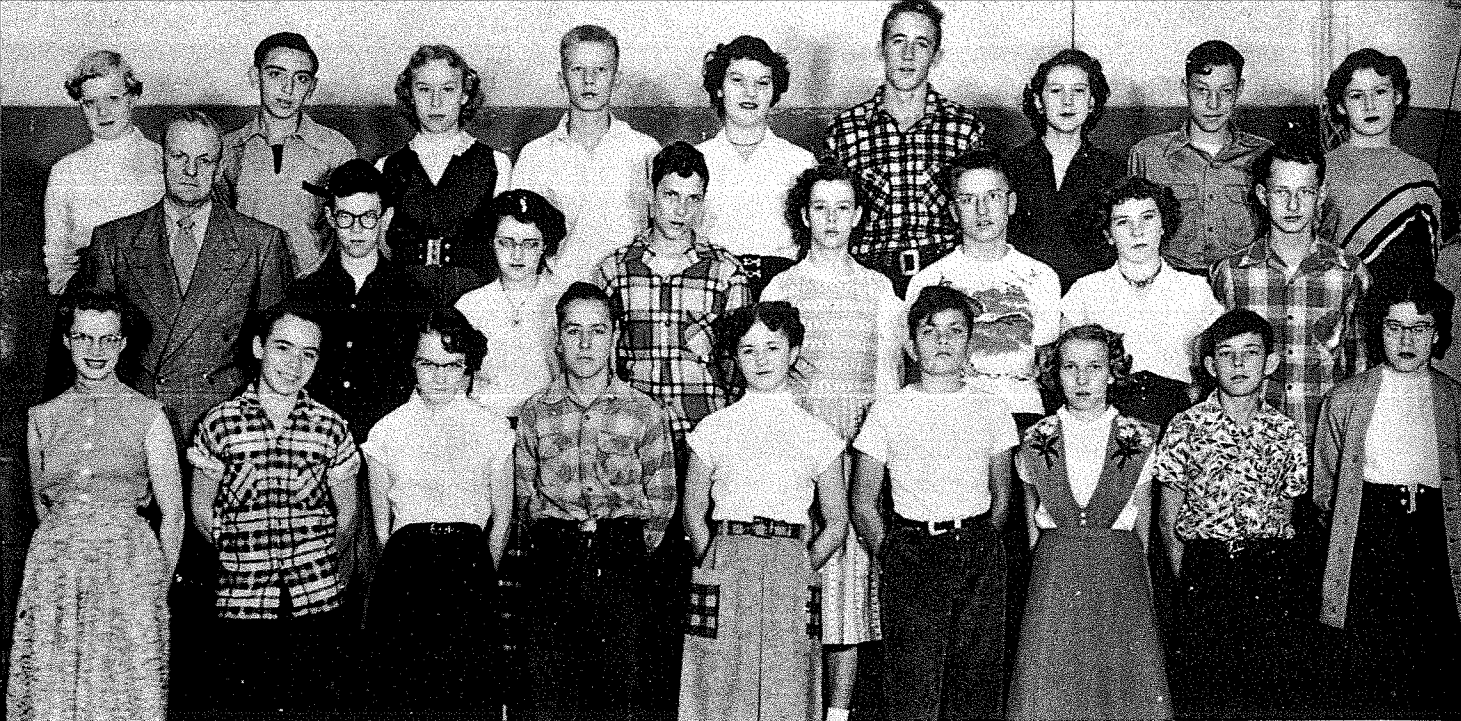
Freshmen: Left to right--President, Tom Gorder; Secretary, Carol Johnson; Vice-president, Walter Williamson.



Sophomores: Left to right--President, Gene Whitelock; Secretary, Pauline Neavill; Vice-president, Larry DiSanto.



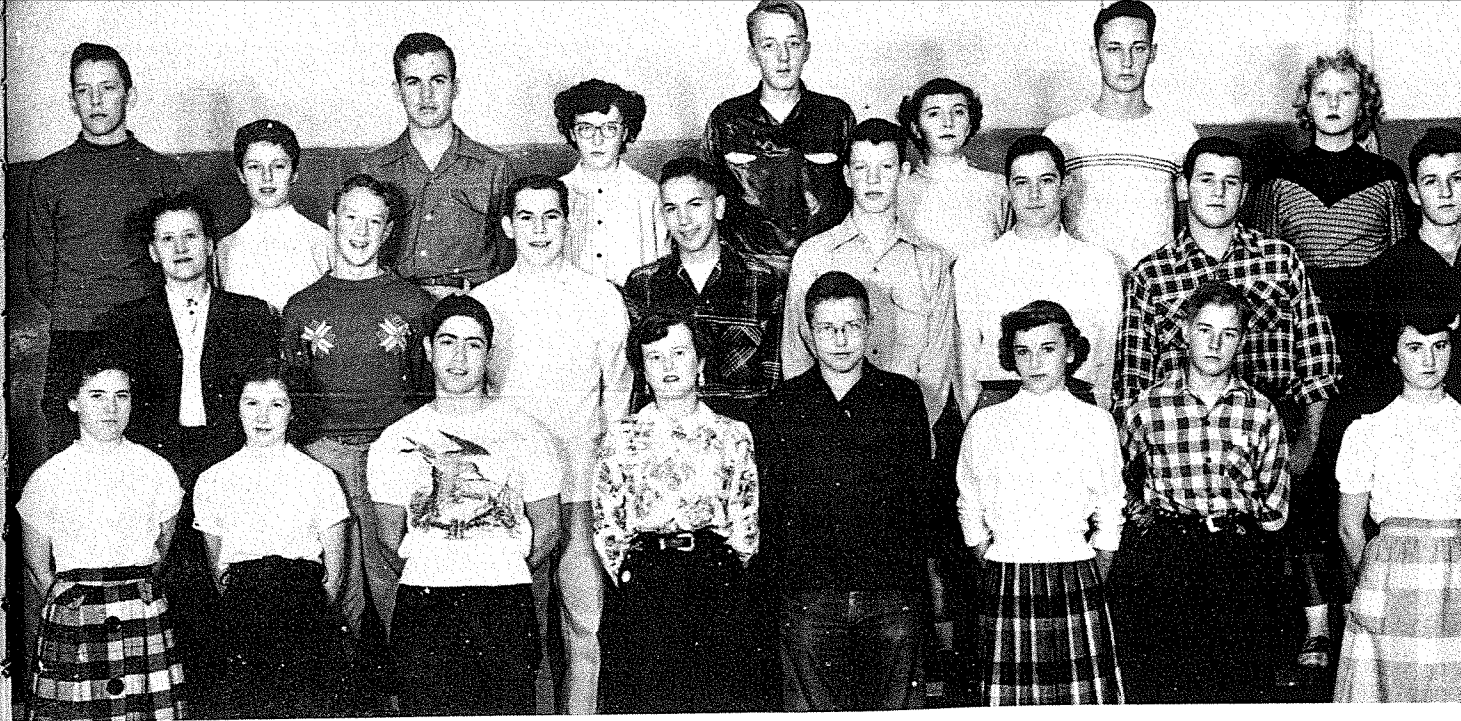
UNDERCLASSMEN



Freshmen: 1st row, left to right--Margaret Moses, Ellis James Haney, Donna Albin, Marvin Reznicek, Marilyn Rotter, Donald Lantz, Gail Willuweit, Jerald Sargent, Joanna Franciscato. 2nd row--Mr. Horsefall, Ronald Bernard, Geraldine Clauser, Duane Schuster, Marion Moses, Willis Steinlicht, Jolyn Kimble, Jimmy Hennen. 3rd row--Wenda Harmon, Melvyn Meverden, Diane Heine, Paul Aijala, Joyce Shostrom, Charles Crotty, Marilyn Jones, Robert Sjomeling, Suzanne Litz.

Freshmen

Freshmen: 1st row, left to right--Shirley Ruth, Robert Mack, Virginia Cooper, Richard Davis, Lois Ammons, Arne Sjomeling, Katherine White, Donnie James, Joanne Deatherage. 2nd row--Leon Stalder, Paula Englebretson, Elmer Framsworth, Joan Hoy, Walter Williamson, Carol Johnson, Albert Arsaga, Peggy Huhta, Mr. Clark. 3rd row, left to right--Cynthia Richards, Donald Gray, Margaret Ferris, Charles Hendrickson, JoAnn Pringle, Merno Stalder, Belva Burtzlaff, Tommy Gorder, Marvin Lester.



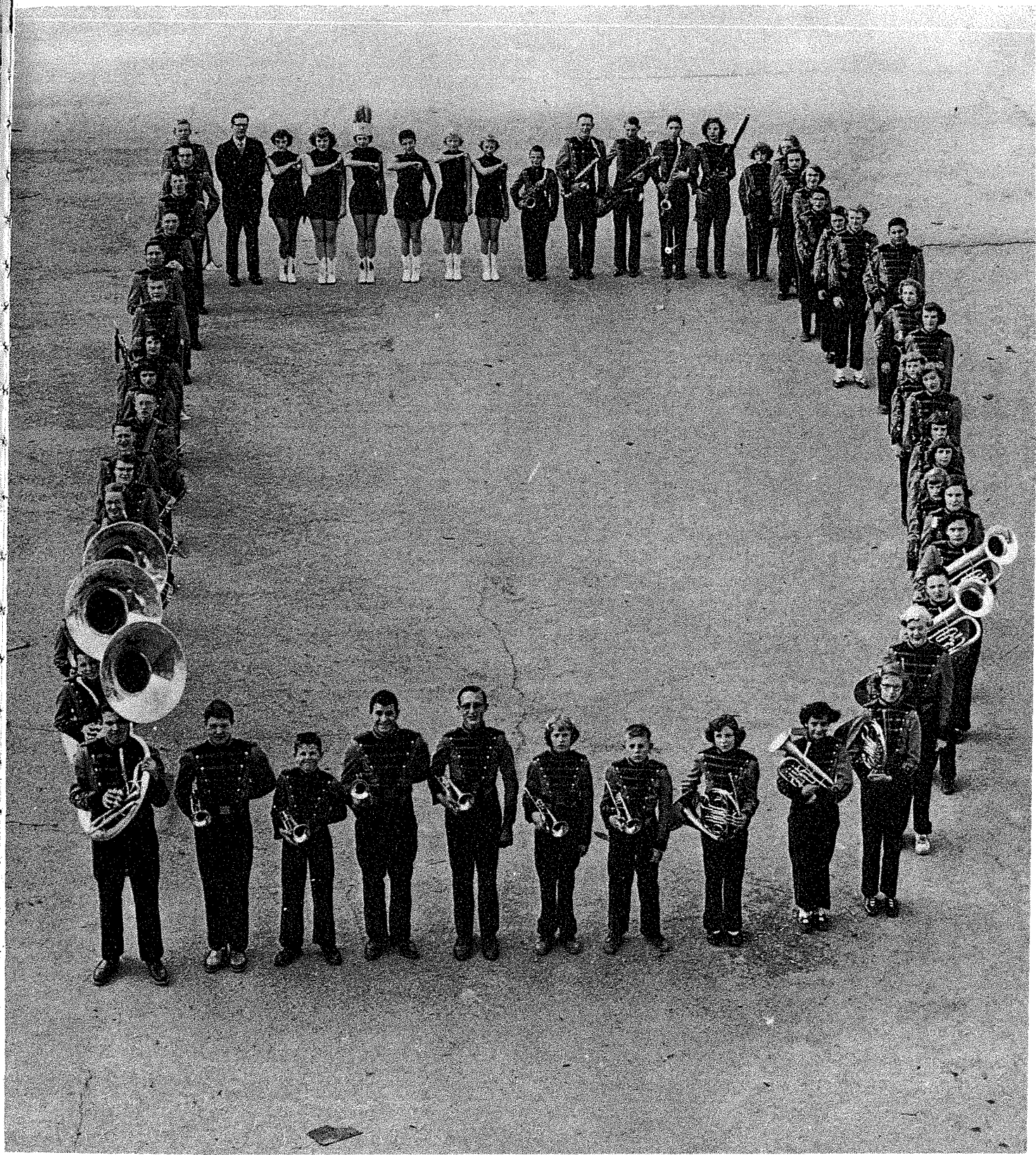
Sophomores: 1st row, left to right--Betty Sargent, Sylvia Berry, Bill Beshara, Mary Jane Drake, Verlin Fox, Mary Rotter, William Welke, Betty Cooper. 2nd row--Mrs. Krug, Jim Veitl, Gene Whitelock, Dale Allen, Richard Sears, Karl Bentz, Larry DiSanto, Tom Perrett. 3rd row--Sherwin Artus, Marcia Moore, George Clark, Geraldine Page, Arnold Nelson, Pat Lubisher, Monte Widdoss, Linda Stoller.

Sophomores

Sophomores: 1st row, left to right--Annette Kittleman, Bill Auer, Frances Kunsman, Corinne Conlon, Robert Reznicek, Sherill Person, Raymond Antuna, Janet Chyba, Pauline Neavill. 2nd row--Mr. Burgess, Darrell Stoneberger, John Fillmore, Gerald Webb, Dick Schlax, Luke Walker, Lyle Brothers, Floyd Iwan. 3rd row--Elaine Fish, Michael Larson, Margaret Sperling, Henry Frawley, Kay Buckmaster, Jim Hutcherson, Florence Lauer, Donald Sonne.



Organizations





Bear Log Officers: Left to right--Robert Thoresen, Editor-in-Chief; David Miller, Assistant Editor; Kay Roberts, Assistant Editor; Janet Burke, Editorial Chairman; Lavern Emery, Business Chairman.

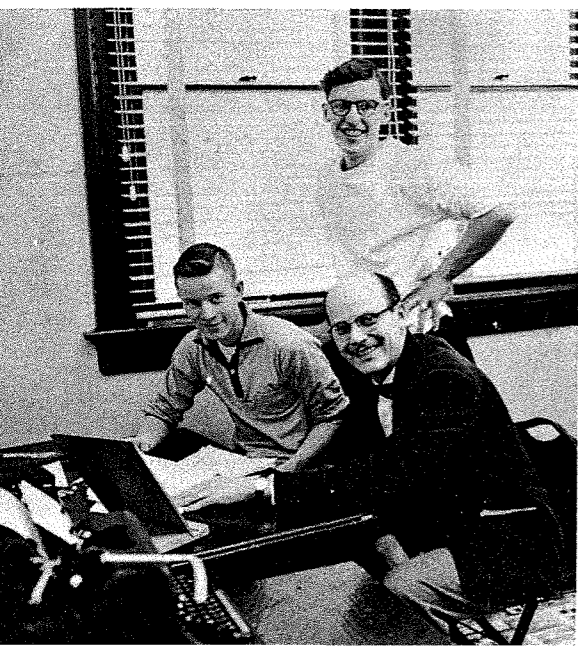
Bear

Log



Left to right--David Miller, Assistant Editor; Lavern Emery, Business Chairman; Janet Burke, Editorial Chairman; Robert Thoresen, Editor-in-Chief.

Bear Log Staff: 1st row, left to right--David Miller, Elaine Fish, Kay Roberts, Elsie Daniels, Janet Burke, Sherill Person, Janet Chyba. 2nd row--Barbara Redinger, Mr. Franklin Brainard, Bill Berry, Marie Beshara. 3rd row--Bob Chyba, Carlyle Richards, Lavern Emery, Betty Kettelhut, Anna Belle Alexander, Ann Jordan, Bob Thoresen. Not pictured--Betty Wells.



Annual Editors--David Miller, Assistant Editor; Bob Thoresen, Editor-in-chief; Mr. Brainard, Advisor.

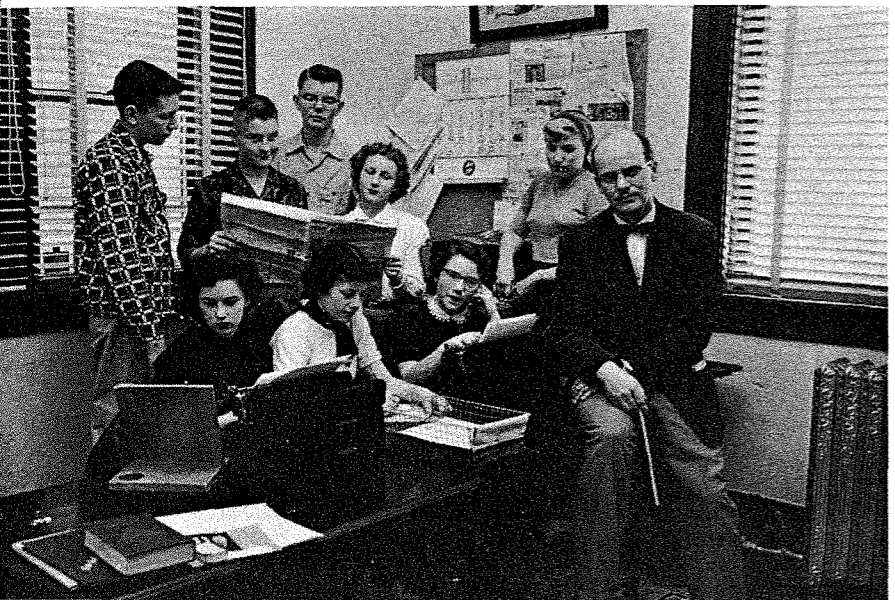




BRUIN STAFF: 1st row, left to right--Marcia Pavlich, Pauline Neavill, Gail Williamson, Barbara Redinger, Betty Kettelhut, Loretta Eatherton, Georgia Gabel, Marie Beshara, Betty Cooper, Sherill Person, Janet Chyba, Annette Kittleman. 2nd row--Elsie Daniels, Norma LaDue, Kay Shama, Marcia Moore, Mary Rotter, Elaine Fish, Anna Belle Alexander, Terry Dyvig, Marlene Beringer, Ellen Morris, Carla Lindstrom, Margaret Vancas. 3rd row--Ann Jordan, Delores Hudson, Janet Jacobson, Carol Pigney. 4th row--Raymond Antuna, Bob Thoresen, Bill Berry, David Klein, Bob Chyba, Carlyle Richards, Barry Martin, Lavern Emery, Jim Hutcherson, David Miller, Mr. Brainard.

Bruin

The



Bruin Editors: Seated left to right--Janet Burke, Exchange Editor; Kay Shama, Assistant Editor; Elsie Daniels, Editor-in-Chief; Mr. Brainard, Advisor. 2nd row--Sherwin Artuz, Sports Editor; Bill Berry, Editorial Chairman; Carlyle Richards, Feature Editor; Betty Kettelhut, Assistant Editor; Yvonne Spaulding, Feature Editor.



Publishing the paper

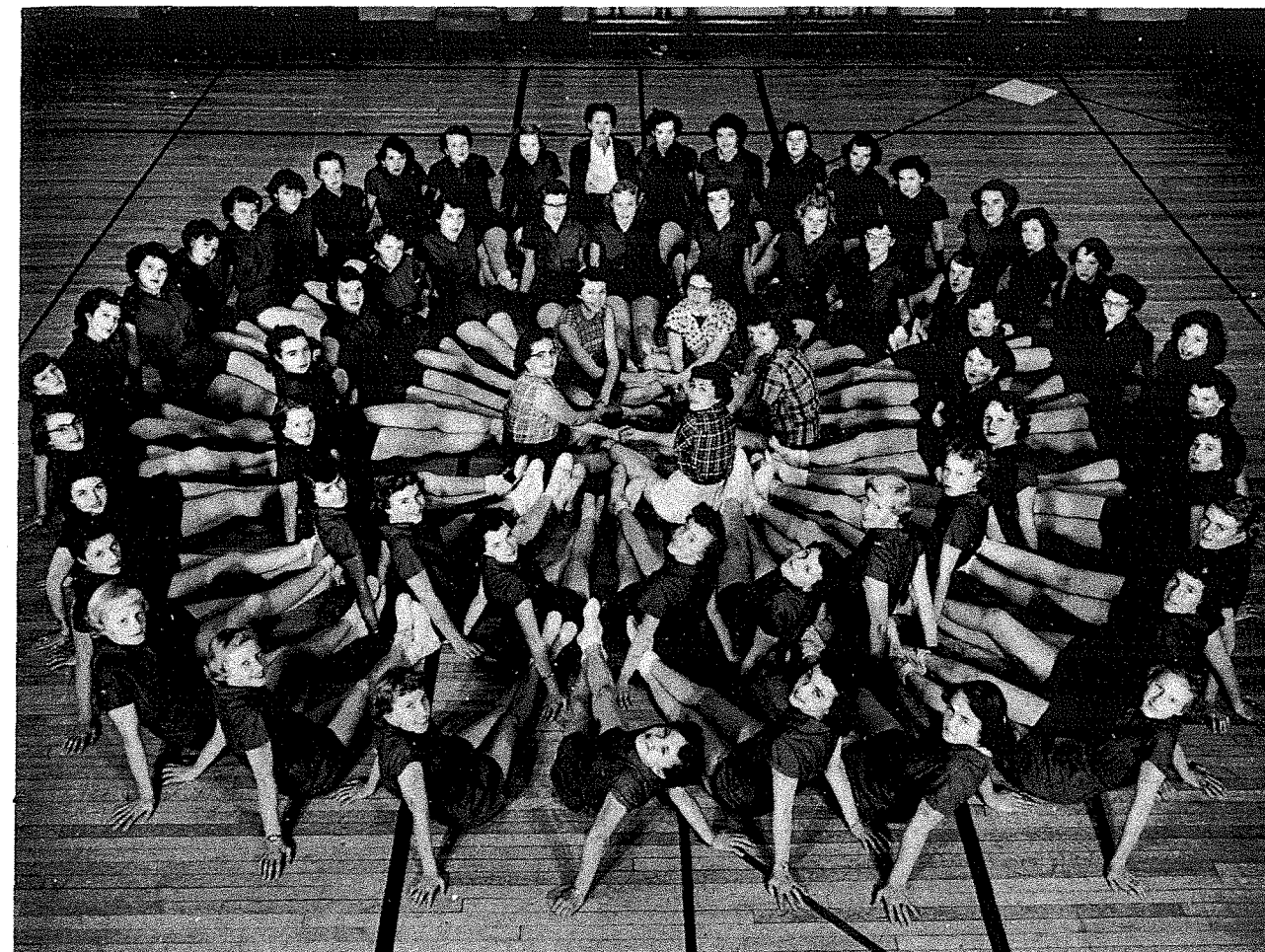
The finished product





D CLUB: 1st row--Bill Auer, Willis Steinlicht, Jim Veitl, Mike Averill, Larry DiSanto, John Smiley, Gene Whitelock, Bill Jones, Coach Ferguson. 2nd row--Don Sonne, Jim Major, Paul Snyder, Barry Martin, Al Johnson, Reece Palmer, David Klein, Joe Slack, Donnie James. 3rd row--Fred Pascoe, George Clark, Richard Sears, Lavern Emery, Don Gabel, Henry Frawley, Eddie Morris, Coach Burgess.

Pep Club in Action



G. A. A.

Inner Circle foreground, counter-clockwise--Kay Shama, Terry Dyvig, Elsie Daniels, Kay Roberts, Gail Williamson, Shirley Kettelhut, Marlene Beringer, Wenda Harmon, Margaret Ferris, Suzanne Litz, Virginia Cooper, Mary Jane Drake, Joan Hoy, Geraldine Page, Linda Stoller, Patty Lubisher, Diane Heine, Carol Johnson, Carol Pigney, Delores Hudson, Francis Wagner, Virginia Gnirk, Pauline Neavill, Betty Cooper, Mary Rotter, Janet Burke, Marilyn Rotter, Sherill Person, Georgia Gabel, Betty Kettelhut, Carla Lindstrom, Bonnie Roebuck, Jolyn Kimble, Paula Engebretson, Joanne Pringle, Geraldine Clauser, Donna Albin, Sylvia Berry, Belva Burtzlaff, Betty Sargent, Cynthia Richards, Peggy Huhta, Sharon Moore, Ida Franzel, Mrs. Krug, Shirley Ruth, Peggy Sperling, Kay Buckmaster, Margaret Moses, Francis Kunsman, Corinne Conlon, Joanna Francescato, Joyce Shostrom, Florence Lauer, Barbara Redinger, Kathryn Wagner, AnnLu Schmiedt, Marcia Moore, Elaine Fish, Janet Chyba, Annette Kettleman.



BAND: 1st row, left to right--Roger Geist, Cynthia Richards, Bonnie Roebuck, Darlene Lester, Arlene Jacobson, Lois Pringle, Wenda Harmon, Joanne Pringle, Helen Pontius, Judy Klein, Virginia Gnirk, Kathryn Jo Wagner. 2nd row--Betty Kettelhut, Geraldine Clauser, Marlis Lester, Gloria Johnson, Harold Hicks, Patsy Steinlicht, Floyd Iwan, Larry DiSanto, Herby Clark, Mike Averill, Kenneth Lester, Perry Casteel, George Auer, Paul Snyder. 3rd row--Florence Lauer, Lois Heinrich, Nancy Newell, Julie Clark Hans Nubert, Arne Sjomeling, Jimmy Young, George Clark, Janet Jacobson, Ronnie Hennen, Carl Bentz, Larry Mitchell, Reece Palmer, Dick Dunwiddie, Richard Sears, Jerry Pontius. 4th row--Norma LaDue, Terry Dyvig, Kay Roberts, Marcia Moore, Elaine Fish, Janet Chyba, Mr. Clark, Marlene Kuykendall, Marjorie Belle, Jane Tabor, Delores Hudson, Jimmy Hennen, Willie Steinlicht, Henrietta Clauser.



Brass Sextet: Left to right--Mike Averill, Herb Clark, Jerry Pontius, Wenda Harmon, Janet Jacobson, George Clark.

Band

PEP BAND: Left to right--Roger Geist, Cynthia Richards, Bonnie Roebuck, Florence Lauer, Geraldine Clauser, Katherine Wagner, Virginia Gnirk, Kenneth Lester, Perry Casteel, Marlene Kuykendall, Marjorie Bell, Jane Tabor, Jimmie Hennen, Delores Hudson, Willis Steinlicht, George Clark, Floyd Iwan, Herbie Clark, Karl Bentz, Larry Mitchell, Jerry Pontius, Richard Sears, Dick Dunwiddie, Janet Jacobson, Lois Pringle, Wenda Harmon.



Clarinet Quartet: Left to right--Roger Geist, Bonnie Roebuck, Betty Kettelhut, Cynthia Richards.





MIXED CHORUS: 1st row, left to right--Marcia Kay Pavlich, Loyola Moser, Marie Beshara, Shreda Fransworth, Lois Davis, Kay Roberts, Arne Sjomeling, Mary Rotter, Marcia Moore, Shirley Kettelhut, Elsie Daniels, Betty Kettelhut. 2nd row--Miss Craig, Walter Williamson, Shirley Elliott, Carol Pigney, Janet Jacobson, Yvonne Spalding, Delores Hudson, Carole Rypkema, Terry Dyvig, Tommy Gorder, Bill Beshara. 3rd row--Perry Casteel, Reece Palmer, George Clark, Monte Widdoss, Henry Frawley, Richard Sears, David Miller, Carl Bentz, Dale Allan, Robert Thoresen.

Mixed Chorus

MIXED CHORUS: 1st row--Janet Chyba, Ronald Bernard, Sherill Person, Shirley Sherman, Kay Shama, John Fillmore, Jimmy Veitl, Virginia Gnirk, Betty Cooper, Robert Mack, Gail Williamson. 2nd row--Janet Burke, Norma LaDue, Anna Belle Alexander, Florentine Engler, Ellen Morris, Bonnie Roebuck, Carla Lindstrom, Sharon Moore, Ann Jordan, Francis Wagner, Margaret Vancas. 3rd row--Richard Sargent, Bill Berry, Joe Slack, Paul Snyder, Bob Chyba, Carlyle Richards, Cal Geary, David Klein, Fred Moser, Larry DiSanto.

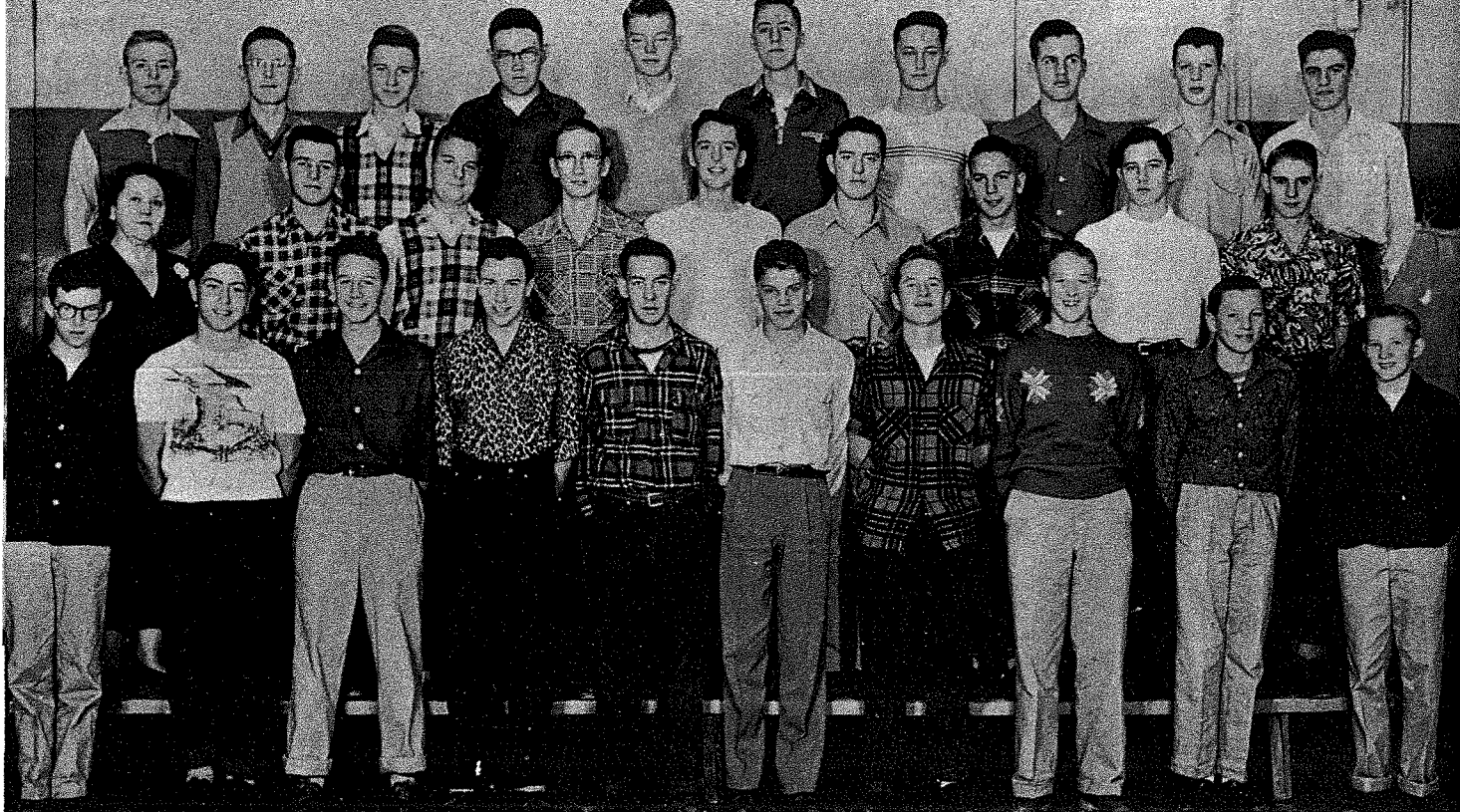


GIRLS' GLEE CLUB: 1st row, left to right--Katherine Wagner, Mailyn Maresh, Shirley Ruth, Katherine White, Virginia Cooper, Elsie Daniels, Betty Kettelhut, Gail Williamson, Betty Sargent, Pauline Neavill. 2nd row--Miss Craig, Shirley Kettelhut, Georgia Gabel, Mary Rotter, Marcia Moore, Shreda Farnsworth, Lois Davis, Ann Lu Schmiedt, Betty Cooper. 3rd row--Francis Kunsman, Joanna Francescato, Corinne Conlon, Mary Drake, Ann Jordan, Terry Dyvig, Shirley Elliott, Elaine Fish, Kay Roberts, Paula Engelbretson. 4th row--Carole Rypkema, Belva Burtzloff, Marilyn Jones, JoAnne Pringle, Bonnie Roebuck, Joyce Shostrom, Margaret Ferris, Carol Pigney, Betty Mae Oestreich.

"Girls' General"

GIRLS' GLEE CLUB: 1st row, left to right--Gail Willuweit, Janet Chyba, Marilyn Rotter, Jolyn Kimble, Shirley Sherman, Sherill Person, Loyola Moser, Marcia Kay Pavlich, Annette Kittleman, Joanne Deatherage. 2nd row--Marie Beshara, Virginia Gnirk, Betty Wells, Frances Wagner, Janet Burke, Margaret Vancas, Kay Shama, Barbara Redinger. 3rd row--Marion Moses, Pat Lubisher, Linda Stoller, Joan Hoy, Florence Lauer, Sharon Moore, Anna Belle Alexander, Norma LaDue, Geraldine Page, Peggy Huhta. 4th row--Diane Heine, Florentine Engler, Carla Lindstrom, Ellen Morris, Yvonne Spaulding, Delores Hudson, Janet Jacobson, Cynthia Richards, Carole Johnson.





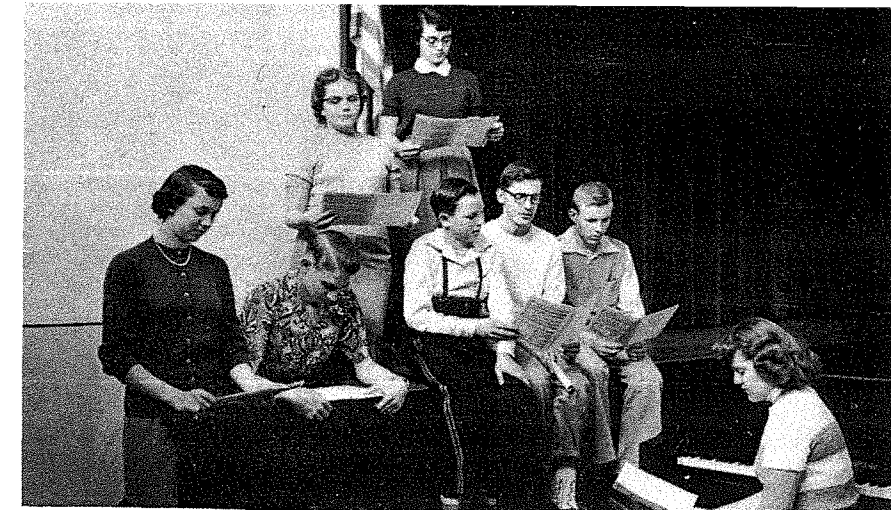
BOYS' GLEE CLUB: 1st row, left to right--Ronald Bernard, Bill Beshara, Walter Williamson, John Fillmore, Dick Sargent, Tom Gorder, Robert Thoresen, Jim Veitl, Arne Sjomeling, Robert Mack. 2nd row--Miss Craig, Larry DiSanto, Bill Berry, Fred Moser, David Miller, Joe Slack, Dale Allen, Carl Bentz, Perry Casteel. 3rd row--Reece Palmer, Paul Snyder, Bob Chyba, Cal Geary, Carlyle Richards, Henry Frawley, Monte Widdoss, George Clark, Richard Sears, David Klein.

Boys and A Cappella

A CAPPELLA: 1st row, left to right--Gail Williamson, Georgia Gabel, Marie Beshara, Virginia Gnirk, Betty Kettelhut, Elsie Daniels, Barbara Redinger, Kathryn Jo Wagner, Marcia Kay Pavlich. 2nd row--Miss Mary Craig, Lois Davis, Marcia Moore, Terry Dyvig, Mary Rotter, Janet Burke, Margaret Vancas, Kay Shama. 3rd row--Kay Roberts, Elaine Fish, Joan Hoy, Ann Jordan, Anna Belle Alexander, Norma LaDue, Mary Jane Drake, Joanna Francescato, Corrine Conlin, Paula Englebretson. 4th row--Patty Lubisher, Geraldine Page, Delores Hudson, Yvonne Spaulding, Bonnie Roebuck, Ellen Morris, Joanne Pringle, Cynthia Richards.



Mixed Octet: Left to right--Kay Roberts, Perry Casteel, Gail Williamson, Marie Beshara, Arne Sjomeling, David Miller, Reece Palmer, Terry Dyvig.



Boys' Octet: Left to right--Arne Sjomeling, Carl Bentz, Carlyle Richards, Bob Chyba, Reece Palmer, Bob Thoresen, David Miller, Perry Casteel. Seated--Joe Slack.



Girls' Octet: Left to right--Kay Roberts, Delores Hudson, Betty Kettelhut, Cynthia Richards, Virginia Gnirk, JoAnne Pringle, Elsie Daniels, Marcia Kay Pavlich.



Mixed Quartet: Left to right--Tom Gorder, Kay Shama, Virginia Gnirk, Paul Snyder.





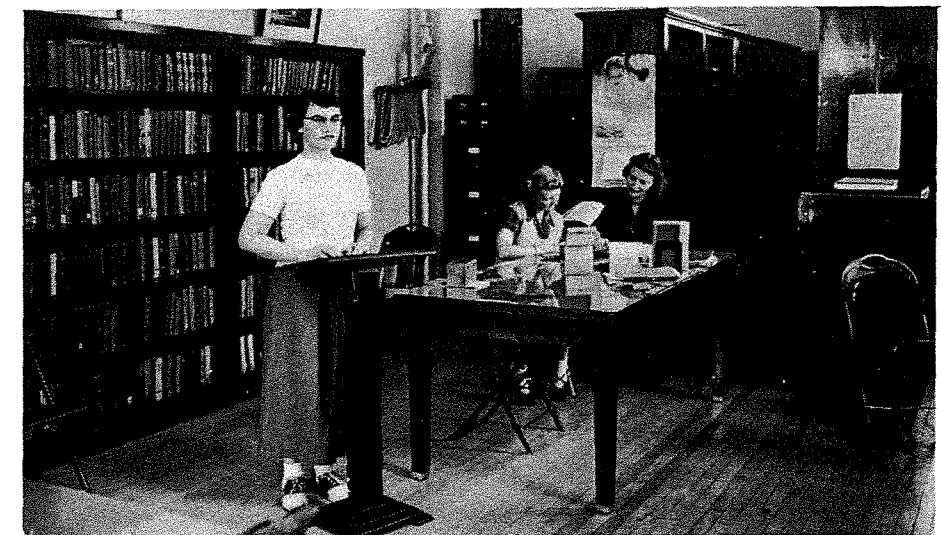
SPECIAL GLEE CLUB: 1st row, left to right--Virginia Cooper, Betty Sargent, Shirley Ruth, Janet Chyba, Marilyn Rotter, Georgia Gabel, Elsie Daniels, Sherill Person, Jolyn Kimble, Gail Williamson, Marcia Kay Pavlich, Kathryn Wagner. 2nd row--Miss Mary Craig, Marie Beshara, Virginia Gnirk, Lois Davis, Marcia Moore, Mary Rotter, Janet Burke, Margaret Vancas, Kay Shama, Shirley Sherman, Frances Wagner. 3rd row--Betty Kettlehut, Corinne Conlon, Joanna Francescato, Kay Roberts, Elaine Fish, Joan Hoy, Carole Rypkema, Norma LaDue, Mary Jane Drake, Paula Englebretson. 4th row--Sharon Moore, Carol Johnson, Diane Heine, Florentine Engler, Carol Pigney, Terry Dyvig, Ann Jordan, Cynthia, Richards, Anna Belle Alexander. 5th row--Belva Burtzlaff, Marilyn Jones, Margaret Ferris, Yvonne Spaulding, JoAnne Pringle, Bonnie Roebuck, Ellen Morris, Joyce Shostrom, Delorous Hudson, Janet Jacobson.

DECLAM: 1st row, left to right--Anna Belle Alexander, Elaine Fish, Sherill Person, Marcia Pavlich, Betty Wells, Joan Hoy, Carole Rypkema. 2nd row--Carol Pigney, Yvonne Spaulding, Mrs. Ferguson, Terry Dyvig, Joyce Shostrom.



DEBATE: Left to right--Gail Williamson, Marcia Kay Pavlich, Arne Sjomeling, Francis Wagner, Bonnie Roebuck, Tommy Gorder, Carol Rypkema, Marie Beshara. Standing--Walter Williamson, Bill Beshara.

Debate



Debate practice.

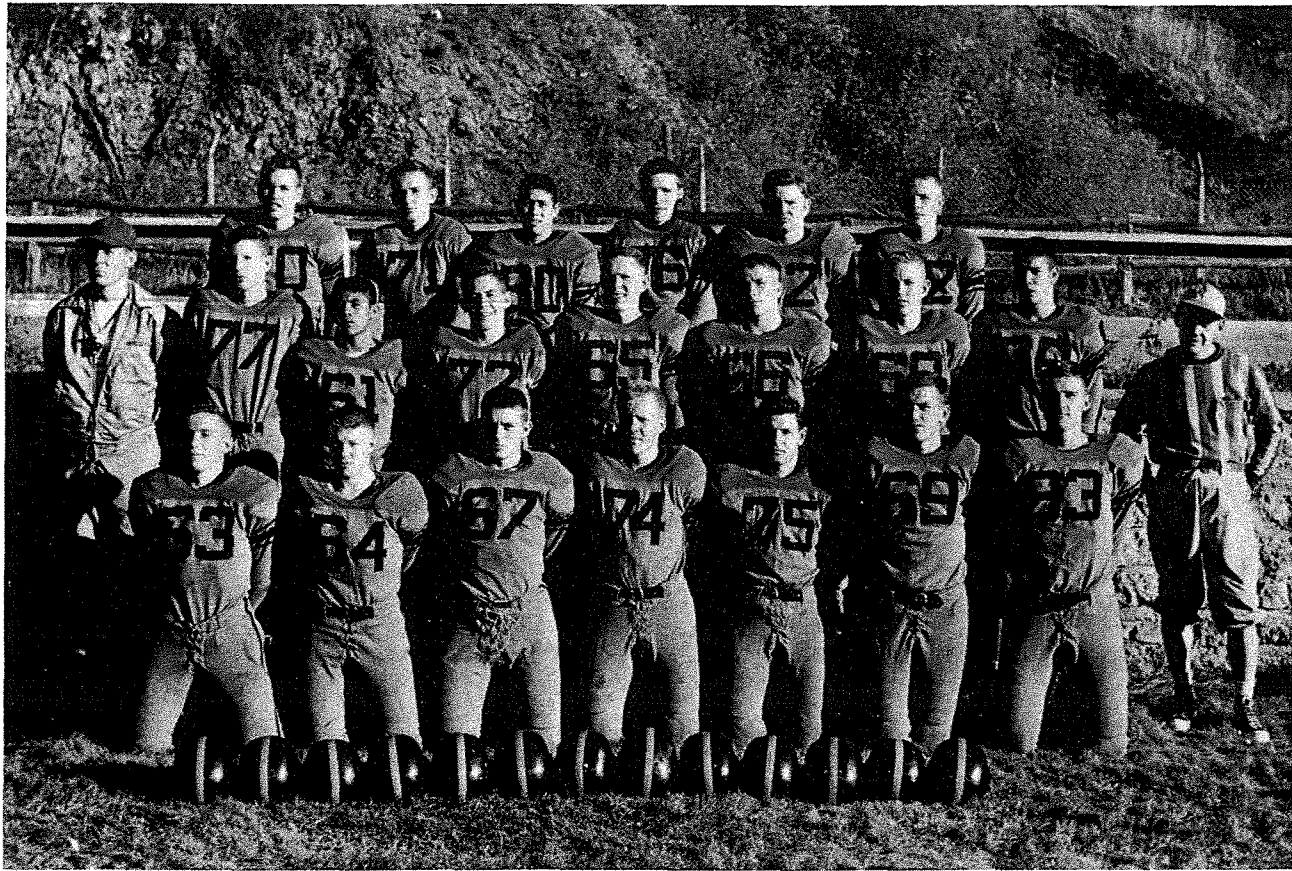


N. F. L.: 1st row, left to right--Marcia Pavlich, Gail Williamson, Marie Beshara, Elsie Daniels. 2nd row--Carol Pigney, Carole Rypkema, Bonnie Roebuck, Yvonne Spaulding. 3rd row--Mrs. Ferguson.

N. F. L. And Dramatics

DRAMATIC CLUB: 1st row, left to right--Gail Williamson, Marilyn Rotter, Annette Kettleman, Peggy Huhta, Jolyn Kimble. 2nd row--Carol Johnson, Diane Heine, Miss Mary Craig, Joyce Shostrom, Wenda Harmon.





First, row, left to right--John Smiley, Mike Averill, Joe Slack, Jim Major, Larry DiSanto, Don Gabel, Eddie Morris. 2nd row--Coach Burgess, Dick Sears, Ray Antuna, Gene White-lock, Paul Snyder, Billy Jones, Reece Palmer, Vern Emery, Coach Ferguson. 3rd row--George Clark, Jim Hutcherson, Bill Beshara, Don Sonne, Vernon Gutsche, Al Johnson.

Touchdown!



Football



Paul Snyder, back.



Barry Martin, guard.

1952 Football Schedule

Opponent	We	They
Gillette	18	13
Hot Springs	20	0
Belle Fourche	7	32
Spearfish	13	27
Sturgis	12	45
Custer	32	13
Lead	19	14



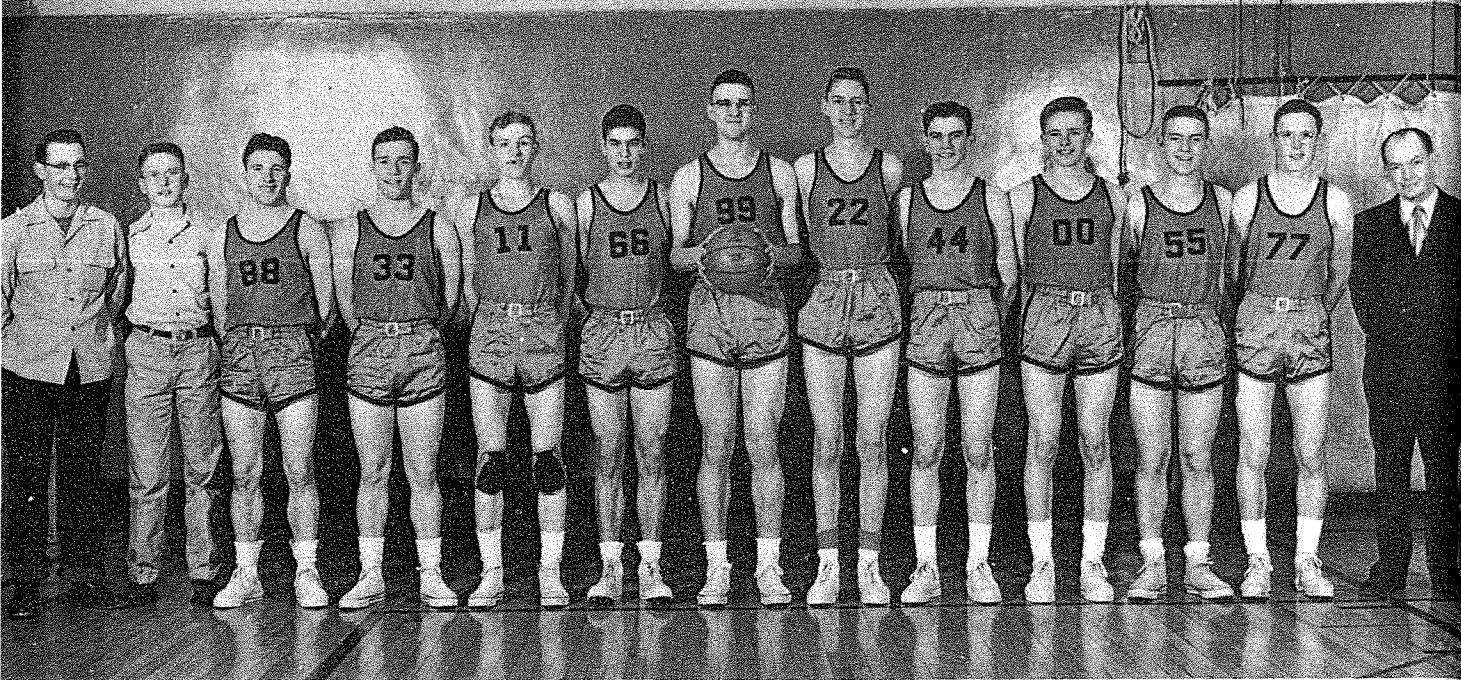
Joe Slack, tackle.



Jim Major, guard.



LaVern Emery, back.

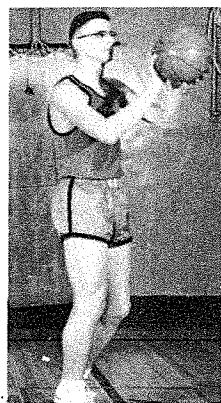


"A" Squad: Left to right--Managers--Dick Dunwiddie, Willis Steinlich, Bill Jones, John Smiley, Reece Palmer, LaVern Emery, Eddie Morris, Henry Frawley, David Klein, Al Johnson, Joe Slack, Paul Snyder, Coach Ferguson.

Basketball

1952-1953 Basketball Schedule

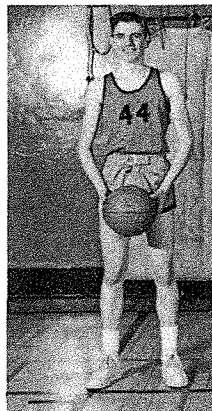
Opponent	We	They
Newcastle	61	46
Newcastle	68	41
Lead	51	35
Rapid City	52	54
Rapid City	53	51
Hot Springs	50	30
Sturgis	40	50
Custer	51	38
Spearfish	48	55
Belle Fourche	37	38
Lead	51	38
Miles City	61	77
Sturgis	48	46
Belle Fourche	45	64
Spearfish	44	53
Hot Springs	44	30
Custer	76	56



Eddie Morris----Center



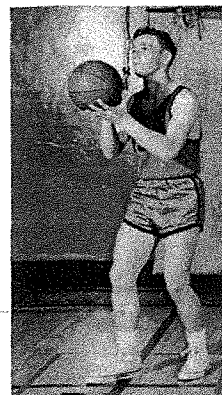
Reece Palmer----Forward



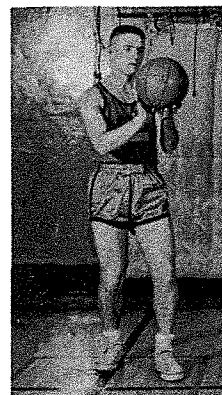
David Klein----Forward



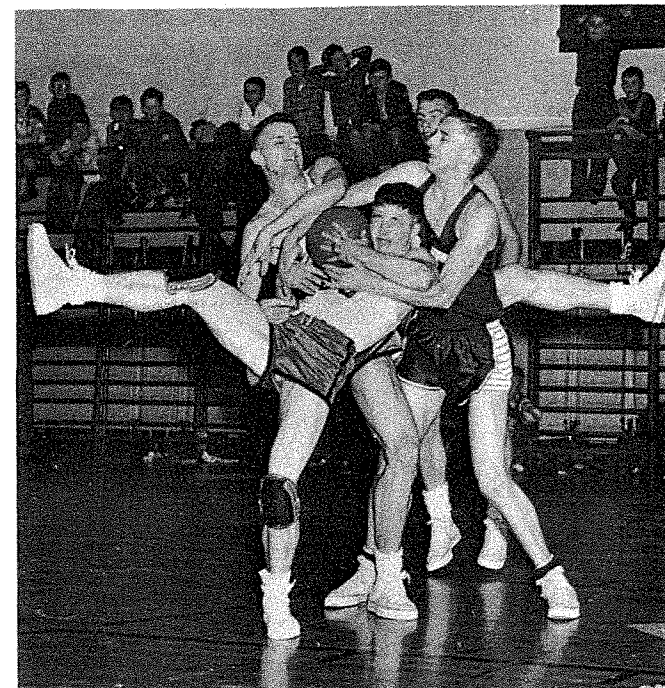
Bill Jones----Guard



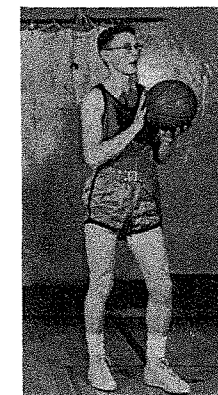
John Smiley----Guard



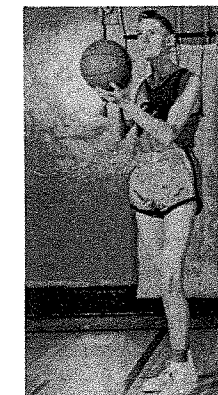
Joe Slack----Forward



Basketball or ballet?

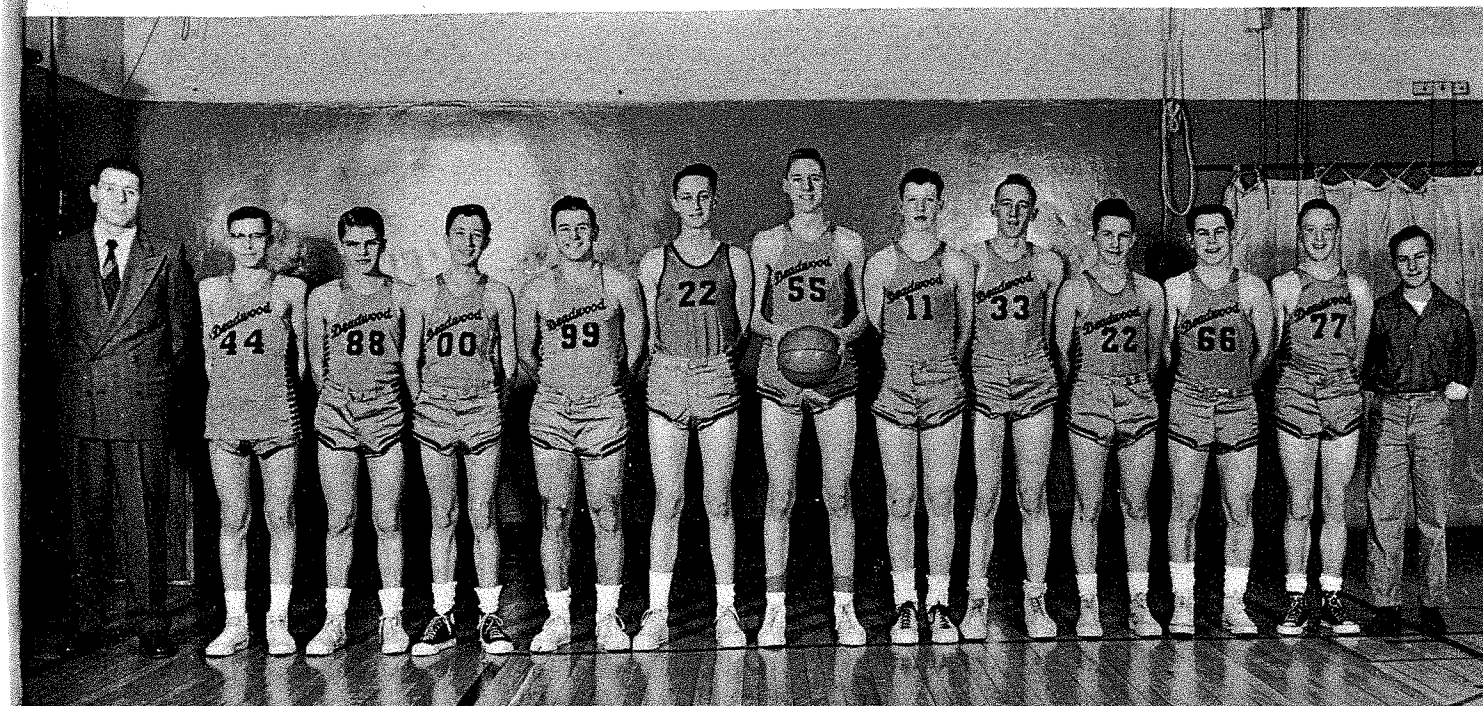


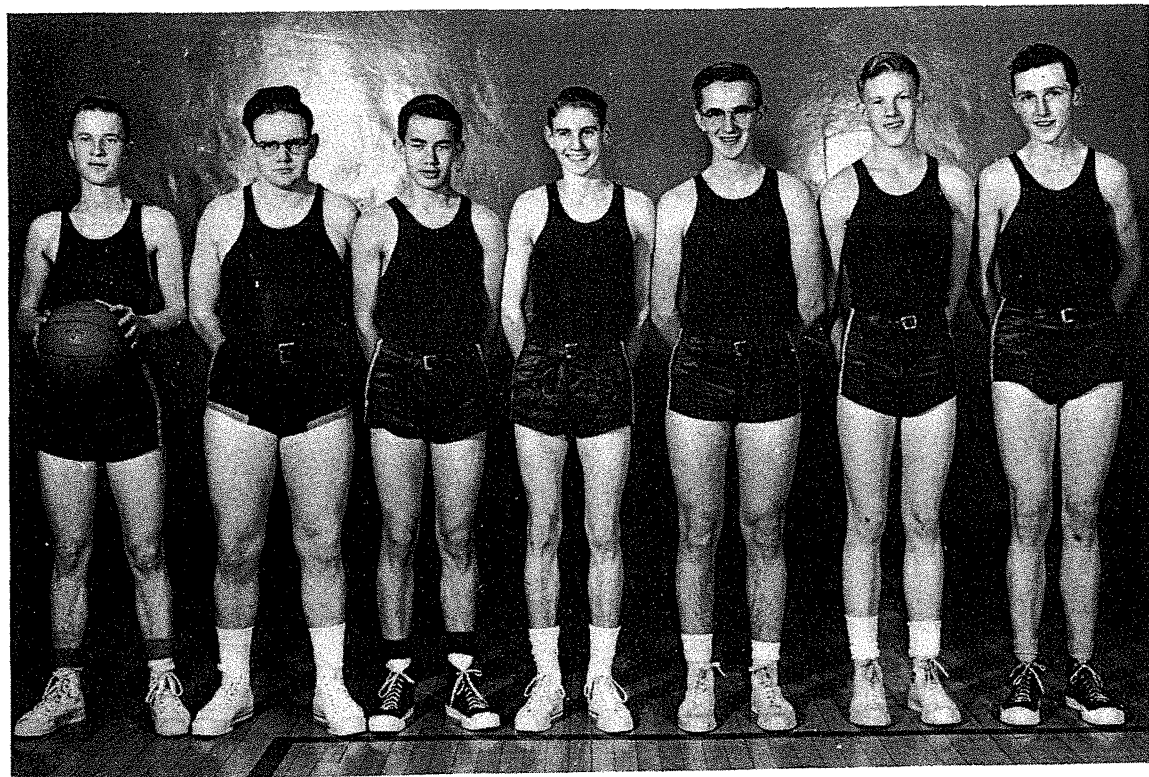
Paul Snyder----Forward



Henry Frawley----Center

"B" Squad: Left to right--Coach Burgess; Robert Sjomeling; Tommy Gorder, Darrell Stoneberger; Larry DiSanto; Monte Widdoss; Henry Frawley; Richard Sears; Charles Crotty; Walter Williamson; Gene Whitelock; Jimmy Veitl; Donnie James, Manager.





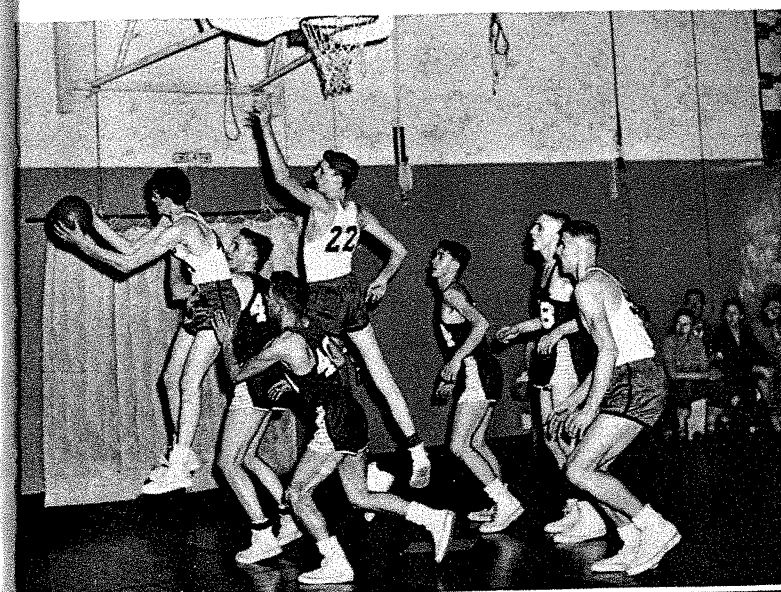
Heavy Weights: Left to right--Bob Thoresen, Vernon Gutsche, Ronald Sargent, Perry Casteel, Elmer Holso, Bob Jones, Darrell Iwan.

"Class Teams"

Freshmen-Sophomore Class Team: Left to right--E. J. Haney, Richard Davis, Arthur DuPratt, Jimmy Hennen, Carl Bentz, Marvin Lester, Willie Steinlicht, Duane Schuster, Donnie James.



Coaches Ferguson and Burgess giving a pre-season pep talk on track.



*B
e
a
r
D
a
y*



Janet Burke--All School Queen

*R
o
y
a
l
t
y*



Coronation

Carol Johnson

"Royalty"

Elaine Fish

Ann Jordan

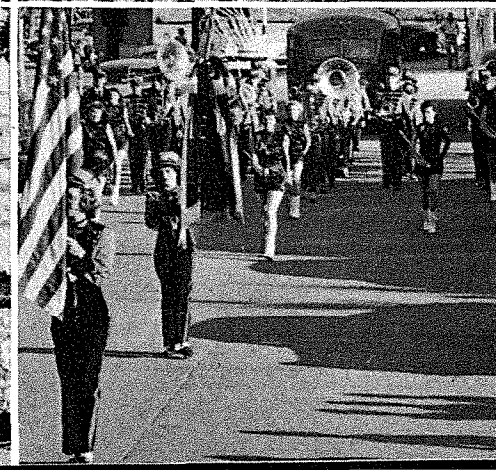
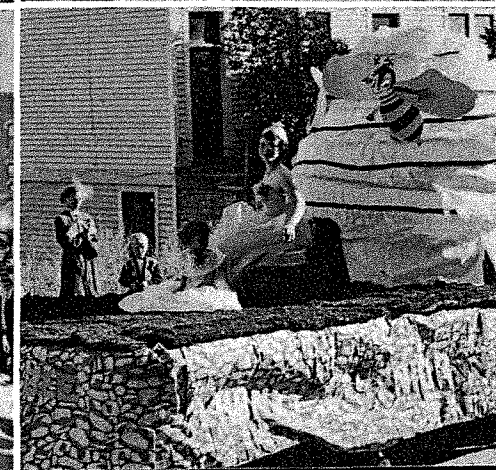
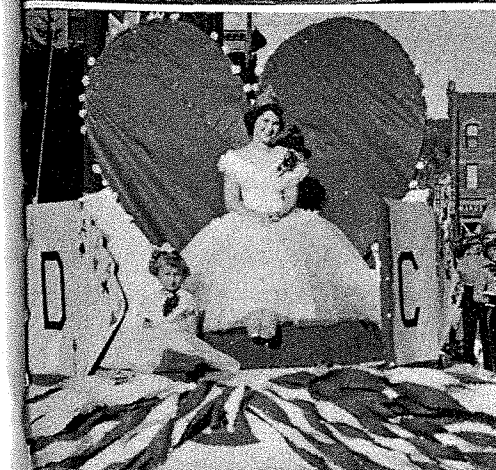
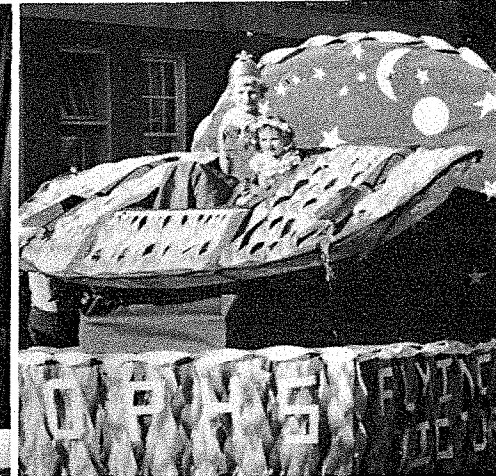
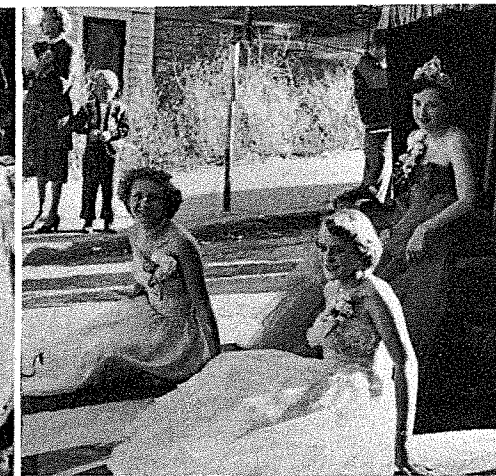
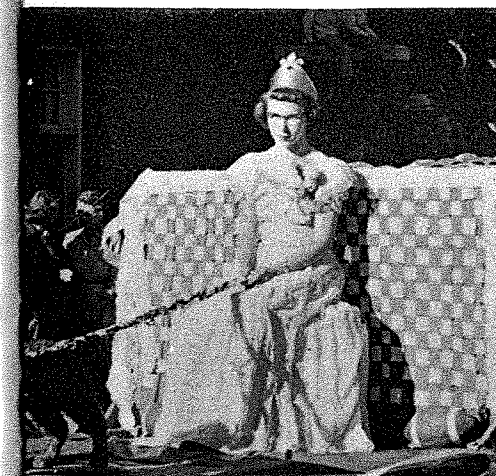
Marie Beshara

Our Band

Betty Kettelhut--Attendant



Betty Mae Oestreich--Attendant

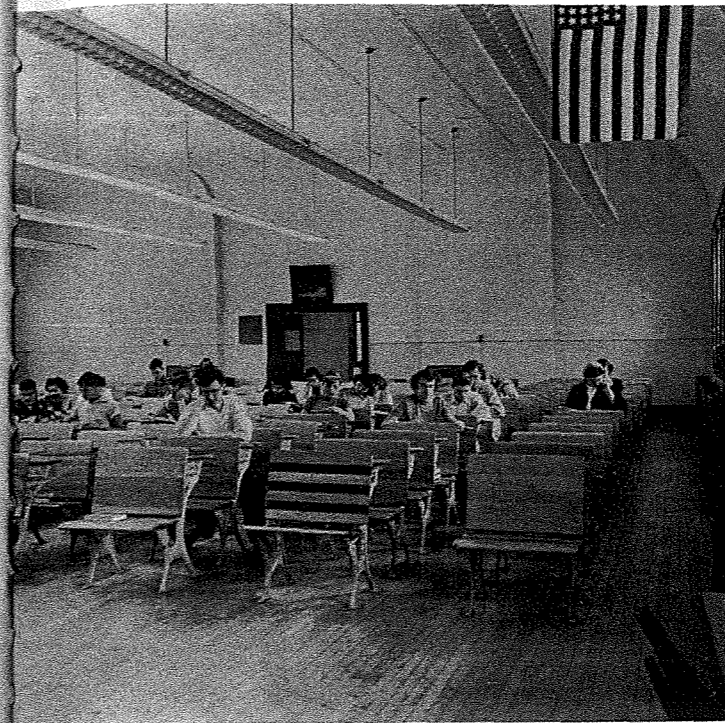




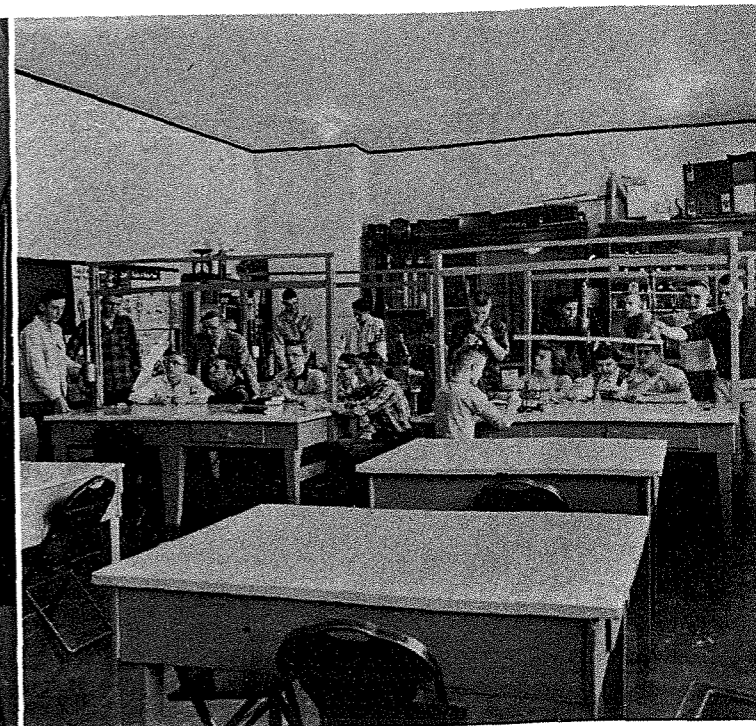
Left to right, seated on floor--Loyola Moser, Reece Palmer, Kay Roberts, Virginia Gnirk, Loretta Eatherton, Georgia Gabel, Shirley Kettlehut, Marlene Beringer. Left to right, seated on chairs--Forest Houlette, John Smiley, Kay Shama, Ellen Morris, Gail Williamson, Carole Rypkema, Marcia Pavlich, Charlene Vares. Left to right, standing--Dick Dunwiddie, David Klein, Mike Averill, Bonnie Roebuck, Eddie Morris, Anna Belle Alexander, Betty Wells, Miss Craig, Frances Wagner, Ann Jordan, Terry Dyvig.

Junior Play

Left to Right--Kay Roberts, David Klein, Reece Palmer, John Smiley, Gail Williamson.



Study Hall



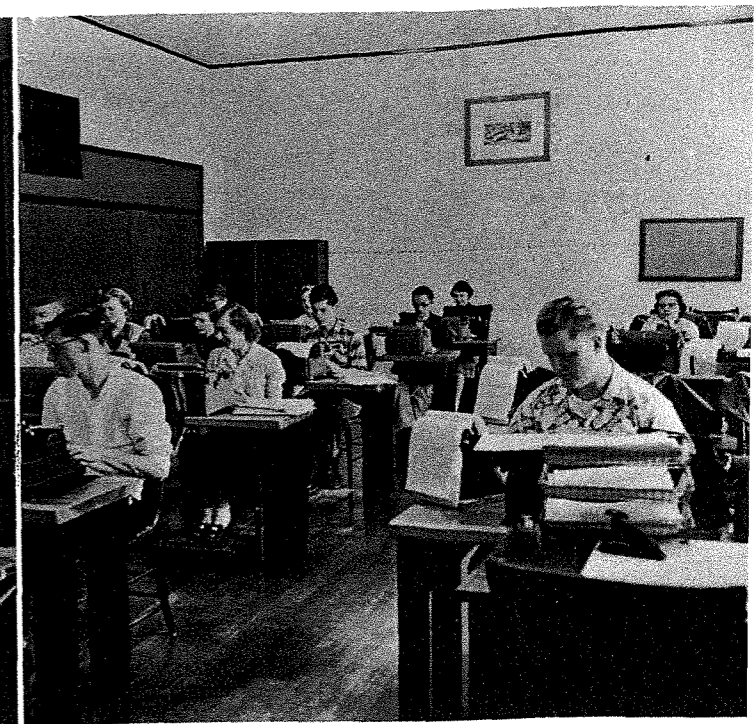
Physic's Class

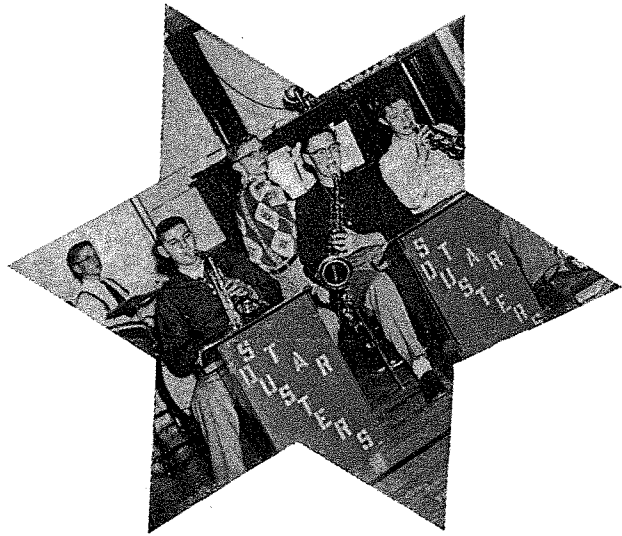
Classrooms

Gym Class

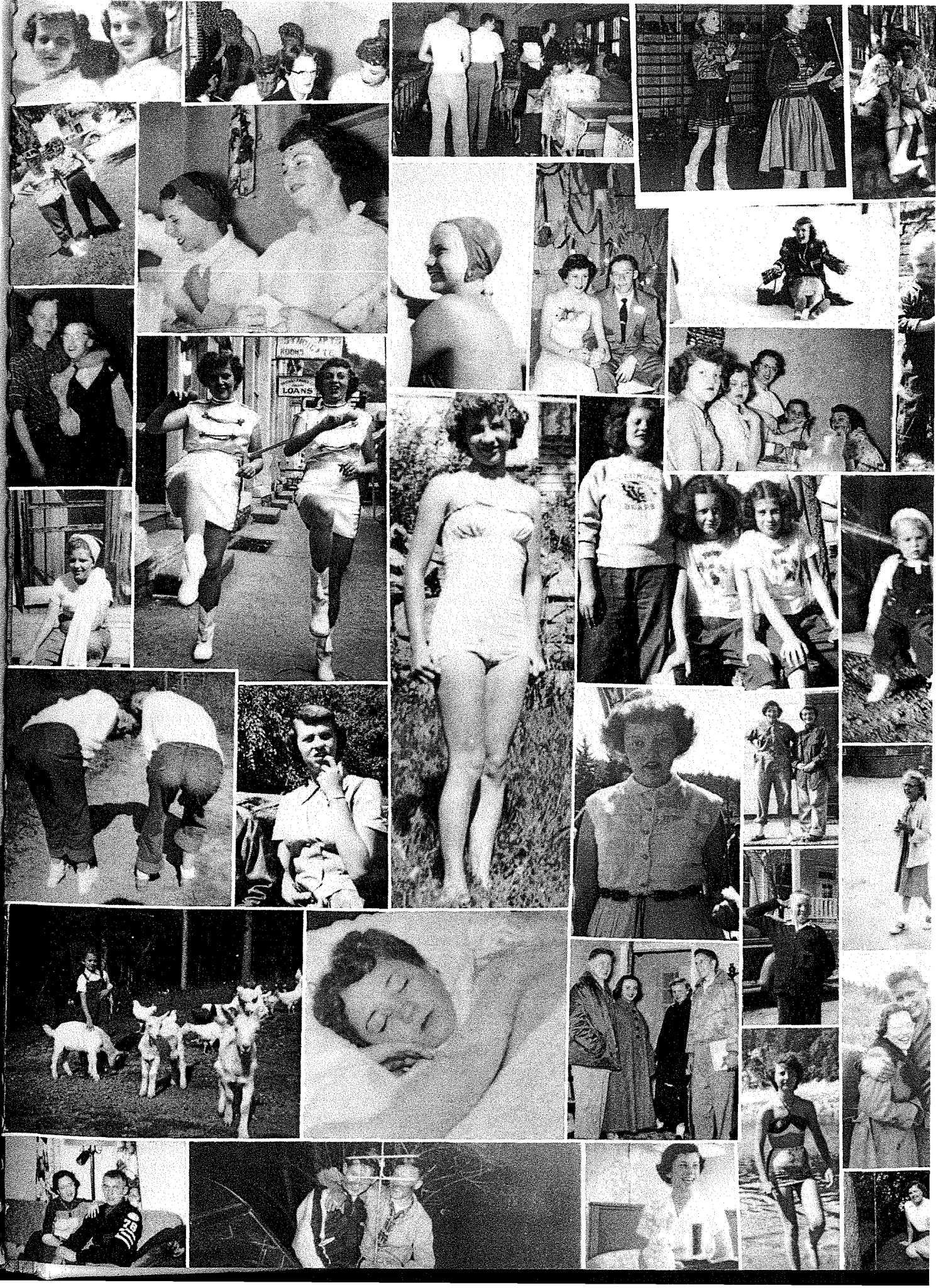
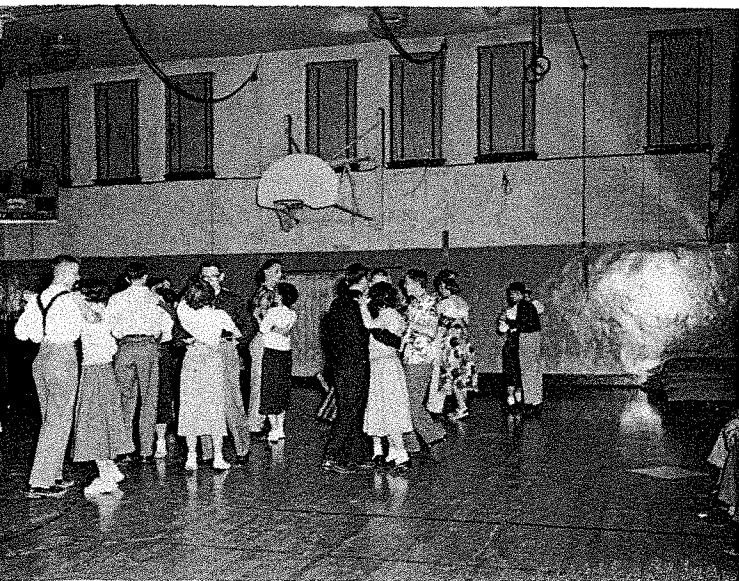


Typing I Class





Dancing?



Sponsors

Al's Pharmacy
Allen Lewis, Roofing & Sheet Metal Works
Auer Service
George V. Ayres Inc.
Bar-B-Q, Leonard & Frank
Ben Franklin Store
Black Hills Amusement Company
Black Hills Laundry
Black Hills Mercantile Co.
Black Hills Novelty Co.
Black Hills Power & Light
Black Hills Radio & T. V. Dealer
Black Hills Studios, Inc.
Bodega Cafe
Kate Callahan, Your Jeweler
Clark's Real Estate Company
A. A. Coburn, Insurance
J. P. Croff & Company
The Cupboard
Dakota Creamery, Lilly Ice Cream
Dakota Typewriter Exchange
Daniels Floral Shop
Deadwood Motor Sales
Deadwood Pioneer Times
DuPratt Motel & Service
Eddie's Sales & Service
Ellis Insurance Agency
F. & M. Bootery
Finola's Clothing Store
First National Bank of the Black Hills
Fish & Hunter Company
Dr. T. H. FitzGibbon
Fountain Electric Service
Franklin Hotel
Gaughen's Dairy & Shamrock
Frank R. Gnirk
Goldberg Grocery
Grab It 'N Growl
Guy H. Hemminger, Insurance
Hendrie & Bolthoff Co.
Hillard-Murray Pontiac Co.
Homestake Mining Co.
Dr. F. S. Howe
The Hub Clothing Store
Independent Bindery
Jeffrie's Cleaners
K. W. Motor Co.
KDSJ 980 K. C.
Kelley's Dairy
Kersten's Dry Cleaners
Carl H. Kubler, Insurance
Lampert Lumber Company
LeMar Motor Co.
Leo's Shoe Shop
Lyle's Service Station
Mapleway Bowling Lanes
Martin's Sinclair Service
Midwest-Typewriter
Dr. N. E. Mattox
Midwest-Beach Company
The Mint Cafe
Montgomery Wards
Morris Jewelry
Newell's Drug Store
The New York Store
Northwest Wood Preserving Co.
Oudou Motor Co.
O. K. Tire Service
Parker & Parker, Lawyers
Peg's Beauty Shop
Porter's Lumber Co.
Dr. T. H. Proctor
Clinton G. Richards, Attorney
Robley's Grill
Roesler & Island Feeds
Ruth Brothers Machine Works
Schultz's Refrigerated Lockers
Schwarzwald Furniture Co.
A. H. Shostrom, Insurance
Dr. J. C. Smiley
Stearns & Shedd
Carl Stoneberger, Lumber & Building
Sunnyside Grocery
Swander's Sunbeam Bakery
F. L. Thorpe Jewelry Co.
Twin City Motors
Dr. W. P. Wasner
Wells Funeral Home
Western Stationers
Widdoss' Furniture & Appliance Co.
Shama's Grocery-Open Sundays
Snappy's Cleaners
Vernie's Standard Service

We wish to thank these sponsors for so generously supporting the annual.