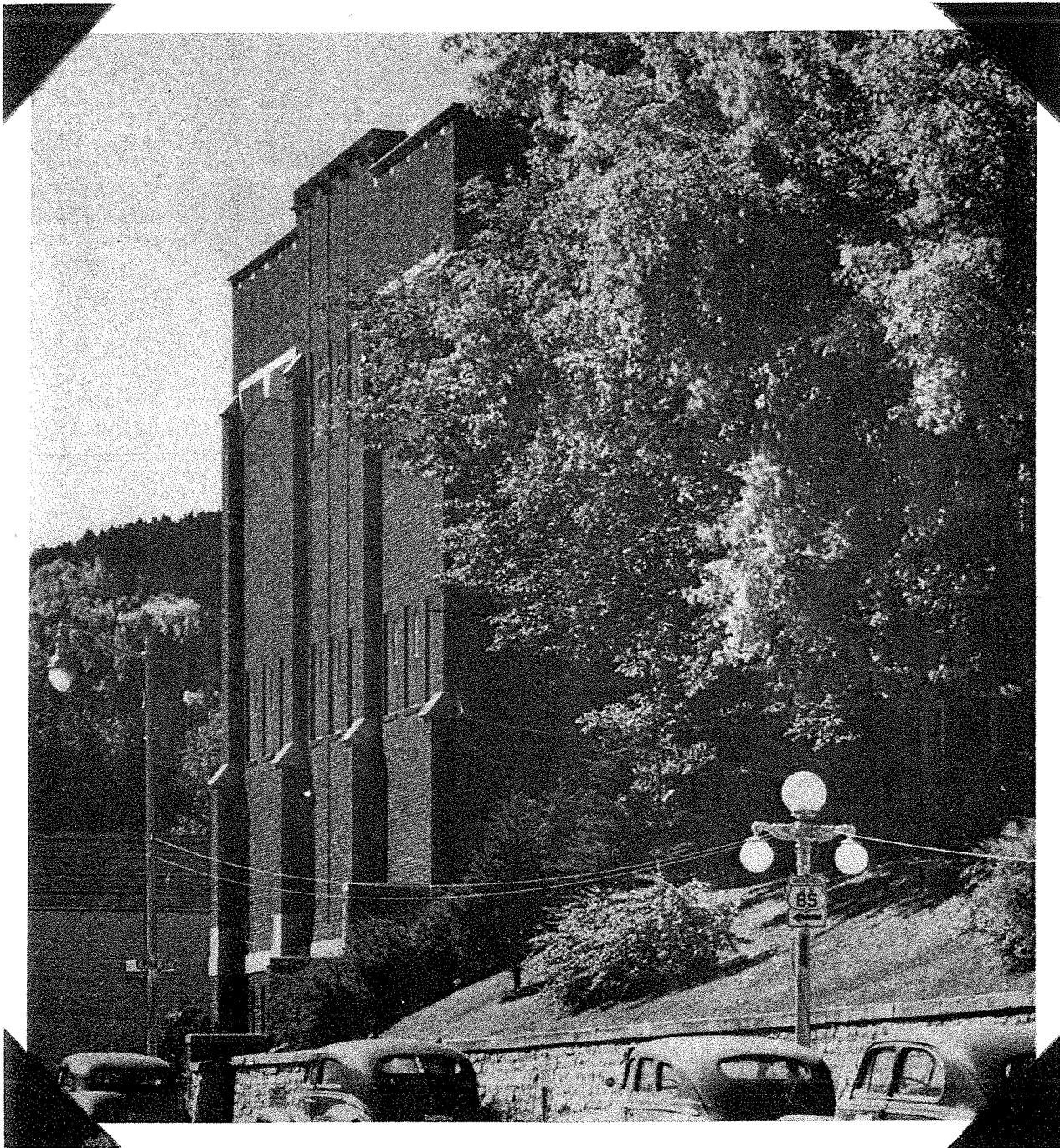
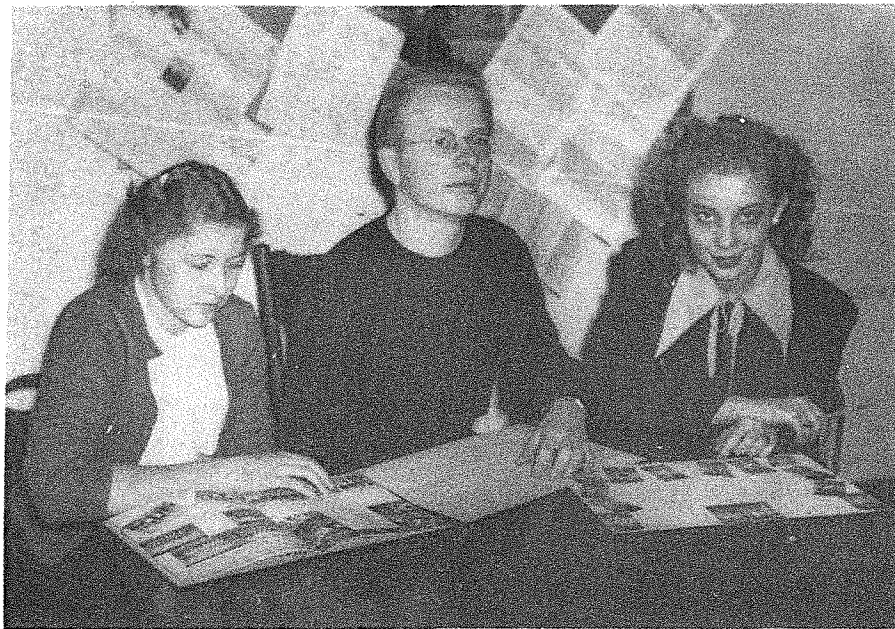


Presenting The Bear Log of 1949



Deadwood, South Dakota



Editor.. Gene Spindler.
Assistant editors.. Gretchen
Robertson and Anita Grieb.
Editorial Chairman.. Ethel
Houlette.

Business Chairman.. John
Trucano.

Photography.. Stanley Reed.
Advisor... Mr. Brainard.



Dedication —

We wish to dedicate our album of memories to the senior class of '49. We

sincerely hope it will help them recall their more

carefree days in high school.

It should enable them to look back on their classmates and

remember the good times they enjoyed in Deadwood High School.

The editor



Faculty Leaders



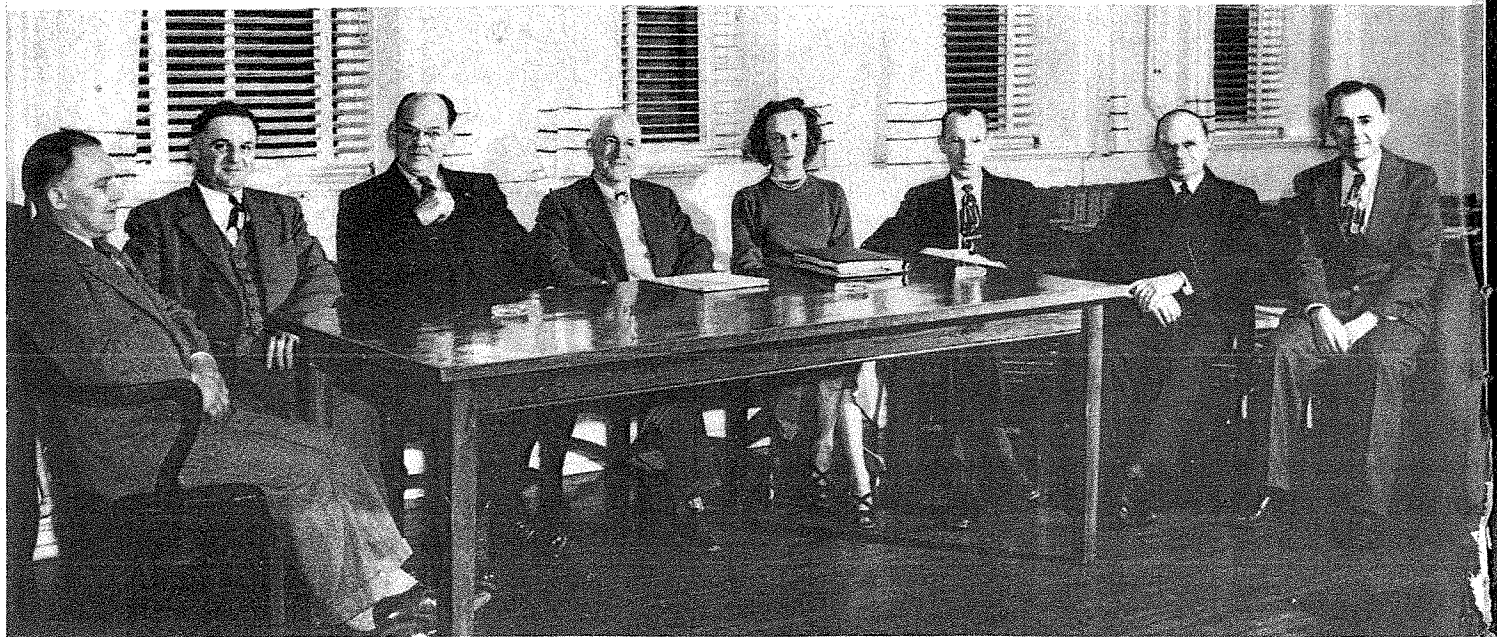
H. S. Berger, Superintendent.



Lola Kersten, Secretary.

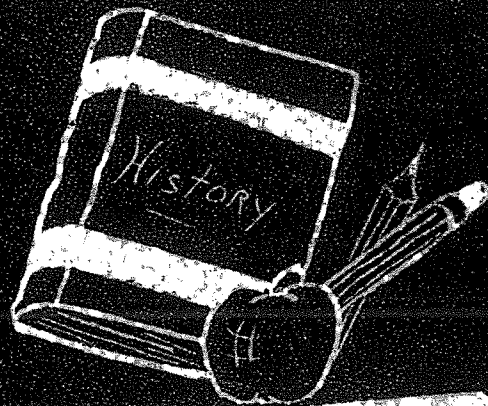


R. H. Krug, Principal.



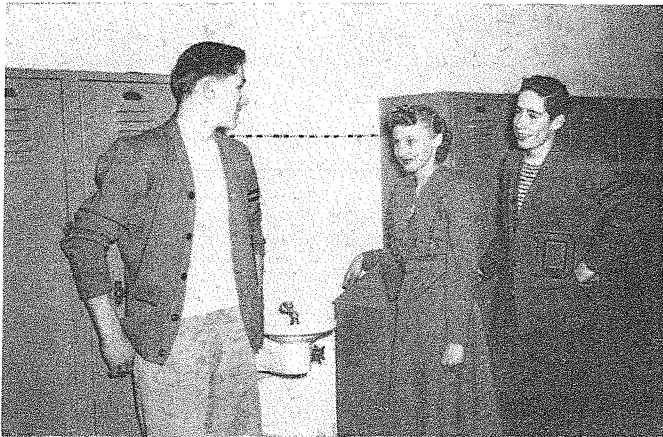
Board of Education: C. O. Gorder, G. A. Derosier, Colburn Ruth, Francis J. Parker, Lola Kersten, William F. Grieb, H. S. Berger, E. D. Vercellino.

Faculty

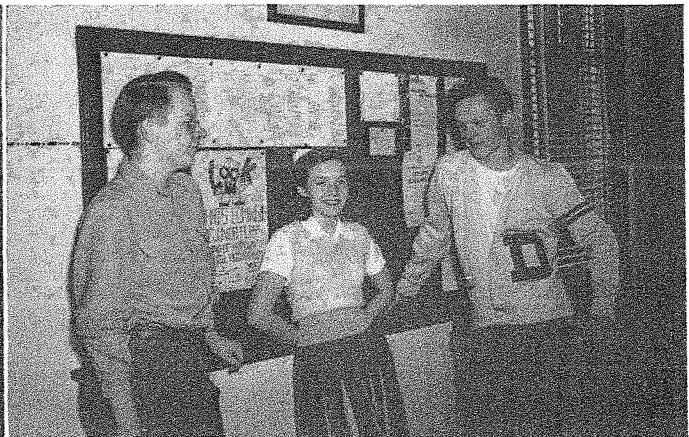


and Students

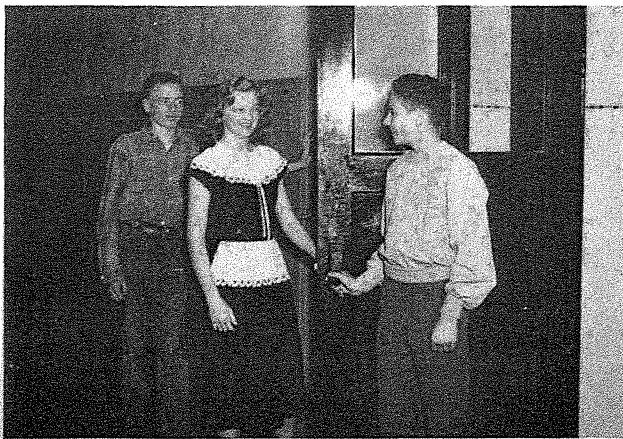
Class Officers



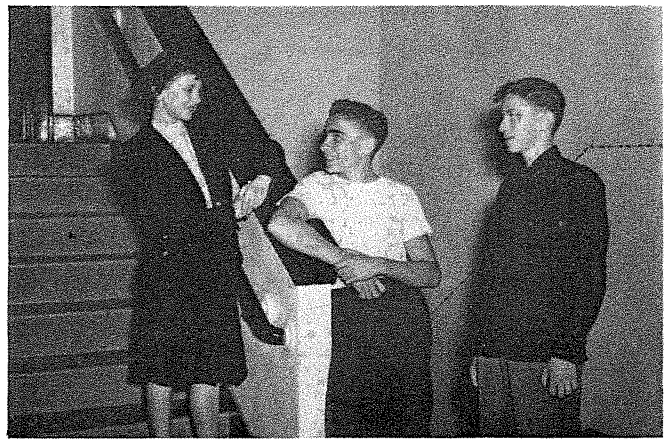
Senior Class Officers: Left to right—Maurice Etem, President; Alice Franzel, Secretary-Treasurer; Alfred Newman, Vice-President.



Junior Class Officers: Left to right—Gene Spindler, Vice-President; Kay Smiley, Secretary-Treasurer; Bill Fish, President.

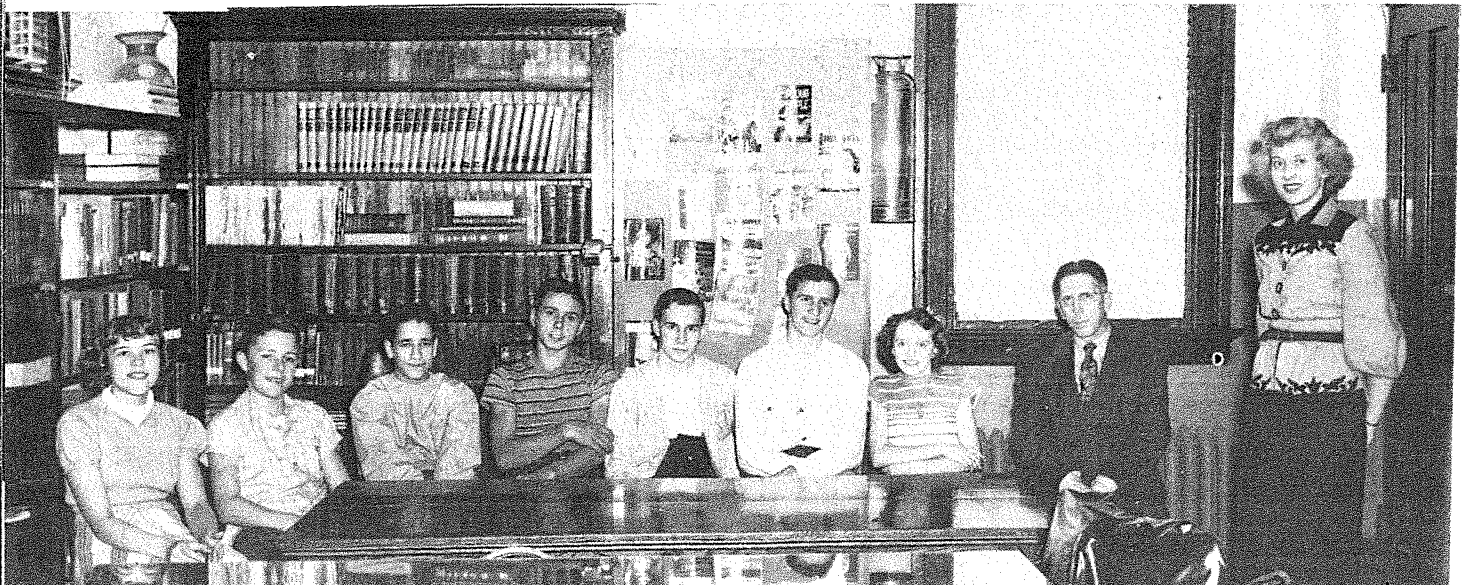


Sophomore Class Officers: Left to right—Leroy Johnston, Vice President; Marilyn Thacker, Secretary-Treasurer; Doran Jacobs, President.



Freshman Class Officers: Vincent Eilers, President; Gloria Fahrni, Secretary-Treasurer; Irvin Burtzclaff, Vice-President.

Student Council: Seated left to right Georgia Palmer, David Anderson, Doran Jacobs, Leonard Fahrni, Don Derosier, John Trucano, Marlene Peyton, Mr. Krug. Standing, Carole Ripley, President.

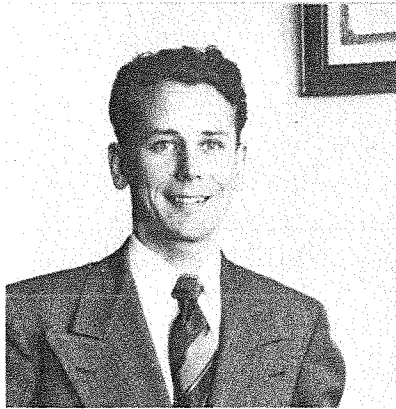


Joy
cra.
4; 1
Pla

Mer
Boy
3; 1
Pla

Dor
yea
eral
3, 4
mas
Che
Tric

Seniors

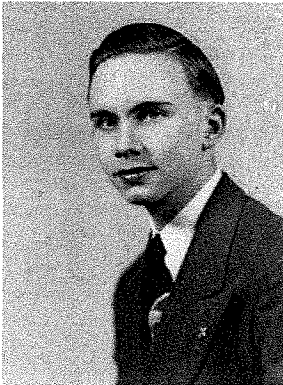


Gordon Nelson, Senior Advisor, English, Latin, Speech.



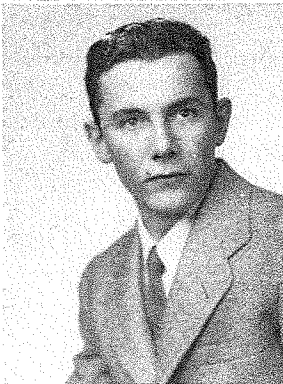
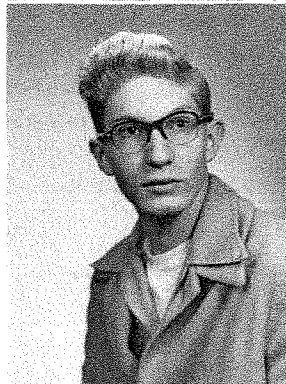
Ann Minton, Senior Advisor, Commerce.

Joyce Acri—Declamatory 1; General Glee Club 3, 4; Mixed Chorus 4; Special Glee Club 4; Christmas Play 4; Acapella Choir 4.



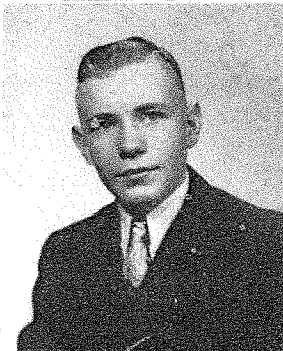
James Berger—Bruin Staff 1, 2, 3, Editor 4; Christmas Play 1, 2, 3, 4; Debate 3; Boys' Glee Club 3, 4; Mixed Chorus 1, 2, 3, 4; Dramatic Club 1, 2; Declamatory 2, 3, 4; Class Play 3; Boys' State 3; Student Congress 2, 3, 4; Latin Club 1, 2.

Merlyn Butler—Class Play 3; Boys' Glee Club 3; Mixed Chorus 3; Dramatic Club 3; Christmas Play 3; Cheerleader 3, 4.



Joe Claunch—Football 1, 2; Basketball 2; D Club 2.

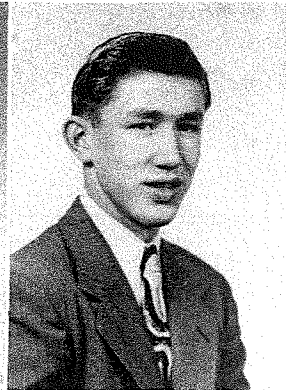
Dorothy Doscher—Entered 3rd year. Acapella Choir 3, 4; General Glee Club 3, 4; Mixed Chorus 3, 4; Special Glee Club 3, 4; Christmas Play 3, 4; Twirling 3, 4; Cheerleader 4; Senior Octette 4; Trio 4; Girls' Quartette 3.



Dean Dybing—Class Play 3; Class Officer 3; Student Council 2; Boys' Glee Club 3, 4; Mixed Chorus 1, 2, 3, 4; Christmas Play 1, 2, 3, 4; Bruin Staff 1, 2; Band 1, 2, 3, 4; Boys' State 3; Mixed Octette 4; Latin Club 1, 2; Camera Club 3.

Seniors

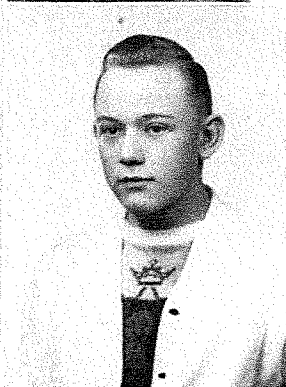
Celestine Engler—General Glee Club 1, 2, 3, 4; Mixed Chorus 2, 3, 4; Christmas Play 2, 3, 4; Special Glee Club 3, 4; Latin Club 1.



Maurice Etem—Entered 2nd year. Weight Team 2; Basketball 3, 4; Football 3, 4; Boys' Glee Club 3, 4; Mixed Chorus 3, 4; Christmas Play 3, 4; Class Play 3; Class Officer 4.

Ric
Chu

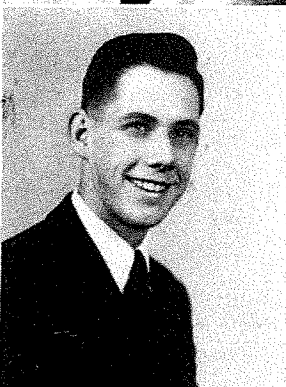
Leonard Fahrni — Entered 2nd year. Football 4; Basketball 2, 3, 4; Student Council 4; Student Congress 3.



Eugene Farnsworth—Football 3, 4; Class Play 3; Student Council 3.

Ro
Ea
Tra
Co

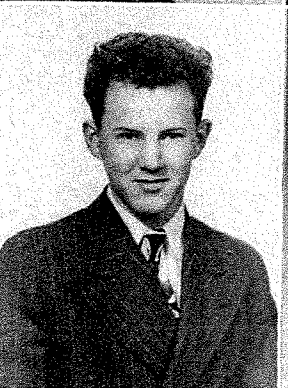
Alice Franzel—G. A. A. 1, 2, 3, 4; Class Officer 4; Latin Club 1, 2. Vincent Green—Entered 2nd year. Bruin Staff 2.



Vincent Green

Jan
ket
3;
Pla
4; J

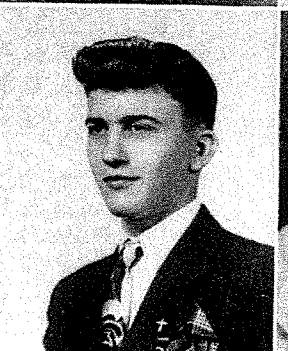
Gene Hennen—Basketball 1, 2, 3; Band 1, 2, 3, 4; Christmas Play 1.



Donna Hosemann—G. A. A. 1, 2; General Glee Club 1, 2, 3, 4; Mixed Chorus 1, 2, 3, 4; Special Glee Club 1, 2, 3, 4; Bruin Staff 1, 2, 3; Class Officer 1; Twirling 1, 2, 3, 4; Class Play 3; Christmas Play 2, 3, 4; Band 1, 2; Cheerleader 3; Annual Staff 3; Acapella Choir 3, 4; Latin Club 1, 2; Senior Octette 4.

No
2, 3
Gle
Spe
lea

John Hunter—Boys' Glee Club 4; Mixed Chorus 1, 2, 3, 4; Christmas Play 2, 3, 4; Class Play 3; Basketball 3, 4.



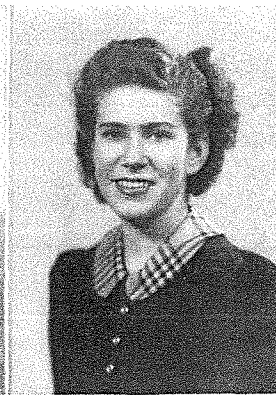
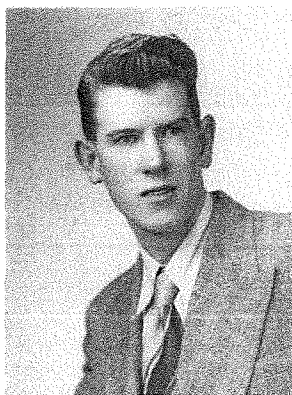
Genevieve Jacobson — Band 1, 2, 3, 4.

Rob
Gle
Chr

Seniors

year.
3, 4;
ib 3,
tmas
Class

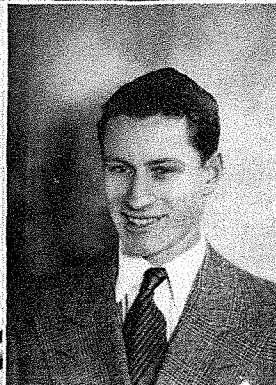
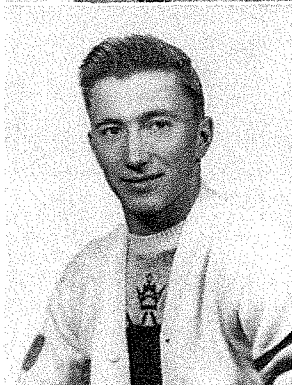
Richard Jacobson — Boys' Glee Club 3; Mixed Chorus 3.



JoAnn Joslin — Christmas Play 2, 3, 4; Special Glee Club 2, 3, 4; General Glee Club 2, 3, 4; Mixed Chorus 2, 3, 4; Dramatic Club 2, 3; Class Play 3; Acapella Choir 3.

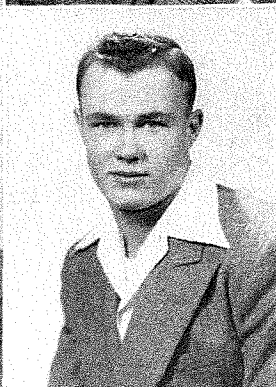
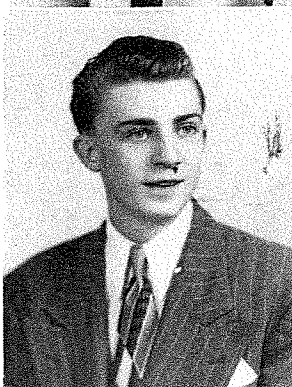
all 3,
council 3.

Robert Jurisch — Football 3, 4; Basketball 3; Declamatory 1; Track 3; Band 1, 2, 3; Student Congress 3, 4; D Club 3, 4.



Howard Mason — Football 2, 3, 4; Bruin Staff 2, 3, 4; Track 3; D Club 2, 3, 4.

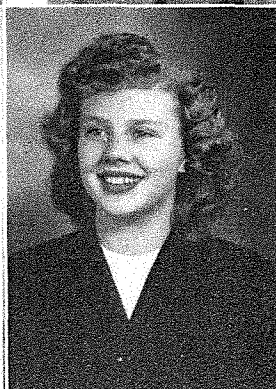
James Merritt — Football 4; Basketball 1, 2, 3, 4; Boys Glee Club 3; Mixed Chorus 3; Christmas Play 3; Band 1, 2, 3; Annual Staff 4; D Club 2, 3, 4.



Norman Oestreich — Football Manager 1; Football 2, 3, 4; Weight Teams 1, 2; Basketball 3, 4; D Club 1, 2, 3, 4; Track 3, 4.

1, 2;
fixed
Club
Class
Class
3, 4;
annual
Latin

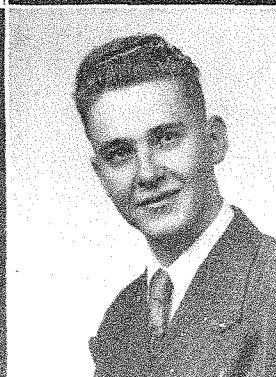
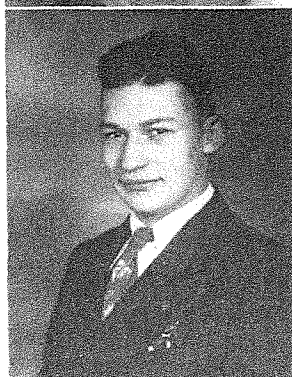
Norma Ondriezek — Bruin Staff 1, 2, 3; Christmas Play 2, 3; General Glee Club 1, 2, 3; Mixed Chorus 3; Special Glee Club 2, 3; Cheerleader 2; Class Queen 1; G.A.A. 1.



Bonnie Pendo — Entered 2nd year. G. A. A. 2, 3, 4; General Glee Club 3, 4; Mixed Chorus 2, 4; Special Glee Club 3, 4; Acapella Cho'r 3; Christmas Play 3, 4; Class Queen 3; All-School Queen 4; Senior Octette 4.

1, 2,

Robert Pouriea — Football 3; Boys' Glee Club 4; Mixed Chorus 4; Christmas Play 4.



Stanley Reed — Annual Staff 4; Camera Club 3.

Seniors

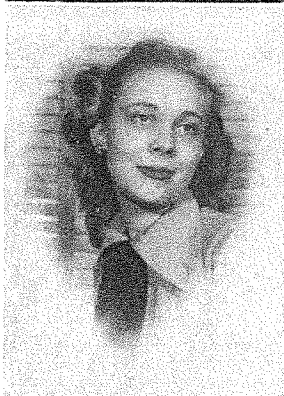
Carole Ripley—G. A. A. 1, 2; Bruin Staff 1, 2, 3, 4; Annual Staff 3, 4; General Glee Club 1, 2, 3, 4; Special Glee Club 1, 2, 3, 4; Mixed Chorus 2, 3, 4; Band 1, 2, 3; Twirling 1, 2, 3, 4; Christmas Play 2, 3, 4; All-School Attendant 4; Debate 4; Latin Club 1; Student Council, President 4.



Betty Roberts—G. A. A. 1, 2, 3, 4; General Glee Club 1, 2, 3, 4; Mixed Chorus 3, 4; Special Glee Club 2, 3, 4; Dramatic Club 2; Bruin Staff 2, 3, 4; Christmas Play 2, 3, 4; Class Play 3; Annual Staff 2, 3, 4; Debate 3, 4; Declamatory 1, 2, 3, 4; Acapella Choir 3, 4; Band 3, 4; Latin Club 1, 2; Senior Octette 4.

Da
4;
3,
Clu
Tr:

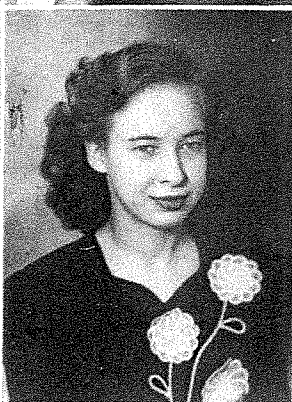
Gretchen Robertson—General Glee Club 1, 2, 3, 4; Mixed Chorus 2, 3, 4; Special Glee Club 2, 3, 4; Acapella Choir 3, 4; Christmas Play 2, 3, 4; Class Play 3; Debate 3, 4; Bruin Staff 2, 3, 4; Annual Staff 2, 3, Assistant Editor 4; Declamatory 3; Dramatic Club Play 2; Latin Club 1, 2; Student Congress 2, 3, 4; Senior Octette 4.



Jean Rosser—G. A. A. 3, 4; Bruin Staff 4.

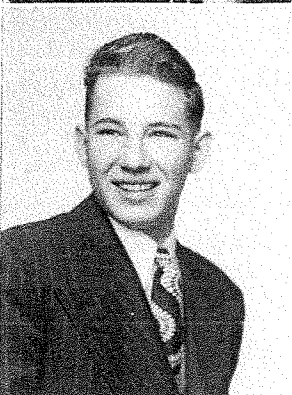
Gay
Clu
3, 4

Roberta Rotter — General Glee Club 1, 2, 3, 4; Mixed Chorus 1, 2, 3, 4; Special Glee Club 1, 2, 3, 4; Acapella Choir 4; Bruin Staff 1, 2, 3, 4; Christmas Play 1, 2, 3, 4; Annual Staff 2, 3, 4; Class Play 3; Student Council 2; Class Officer 2; Debate 3, 4; Declamatory 3, 4; All-School Attendant 4; Student Congress 2, 3, 4; Latin Club 1, 2; Senior Octette 4; D. A. R. Candidate 4.



June Sargent—General Glee Club 3, 4; Christmas Play 3, 4.

Doris Sorensen — G. A. A. 1, 2; General Glee Club 1, 2, 3, 4; Mixed Chorus 1, 2, 3, 4; Special Glee Club 1, 2, 3, 4; Acapella Choir 3, 4; Band 1; Christmas Play 2, 3, 4; Class Officer 3; Latin Club 1, 2.



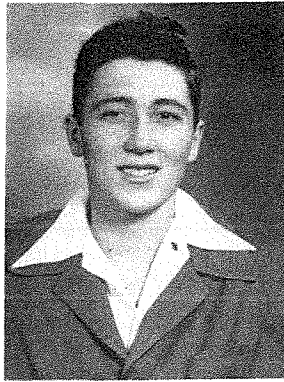
Melvin Sorensen — Football 3, 4; Basketball 3.

Bonnie Starr—G. A. A. 1; General Glee Club 1, 2, 3, 4; Mixed Chorus 3, 4; Special Glee Club 2, 3, 4; Dramatic Club 1, 2, 3, 4; Acapella Choir 4; Bruin Staff 1; Christmas Play 2, 3, 4; Class Play 3; Senior Octette 4.



Irene Stephens—G. A. A. 1, 2; General Glee Club 1, 2; Dramatic Club 1, 2; Latin Club 1.

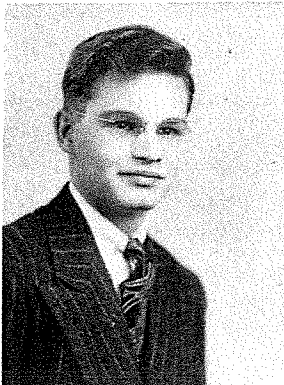
Seniors



Dale Stoneberger — Football 2, 3, 4; Weight Teams 1, 2; Basketball 3, 4; Class Play 3; Boys' Glee Club 3, 4; Mixed Chorus 3, 4; Track 3; D Club 2, 3, 4.



Bonnie Strickland — General Glee Club 1, 3, 4; Christmas Play 3, 4; G. A. A. 4.



Gaylin Thompson — Boys' Glee Club 3; Mixed Chorus 3; Band 2, 3, 4.



Joyce Veitl — G. A. A. 1; General Glee Club 1, 2, 3, 4; Mixed Chorus 3, 4; Special Glee Club 2, 3, 4; Twirling 1, 2, 3, 4; Christmas Play 2, 3, 4; Annual Staff 2, 3; Bruin Staff 3, 4; Class Play 3; Acapella Choir 4; Senior Octette 4.

Edward Becker — Weight Teams 1, 2; Basketball 3, 4; Class Officer 1; Football 2, 3, 4; Track 3; D. Club 2, 3, 4.

Betty Joe Hadden — G. A. A. 1; Christmas Play 2, 3, 4; General Glee Club 1, 2, 3, 4; Mixed Chorus 2, 3, 4; Special Glee Club 1, 2, 3, 4; Bruin Staff 2, 3; Annual Staff 2, 3; Class Play 3; Class Officer 2; Cheerleader 4; Class Queen 4.

Douglas Hudson — Entered 2nd year. Basketball 2, 3; Boys' Glee Club 4; Mixed Chorus 4; Christmas Play 4; Band 4.

Alfred Newman — Manager 2; Basketball 3, 4; Football 3, 4; Weight Teams 1, 2, 3, 4; Track 3, 4; Class Officer 2, 3, 4; D Club 2, 3, 4; Camera Club 3.

John Schunneman — Football 3, 4; Basketball 1, 2; Boys' Glee Club 3; Mixed Chorus 3; Christmas Play 3.

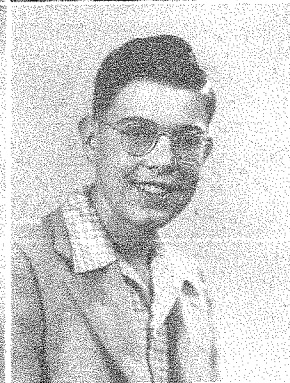
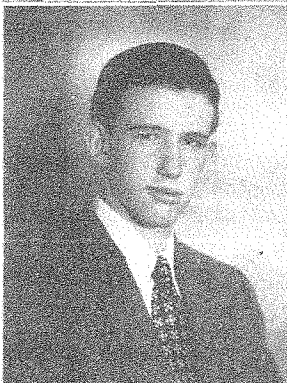
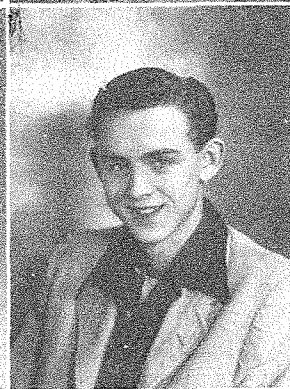
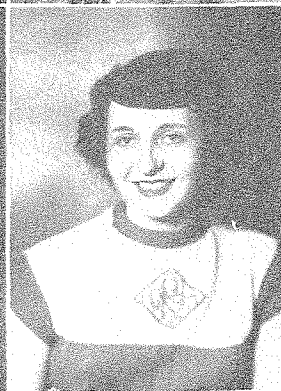
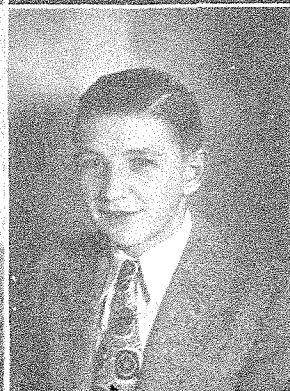
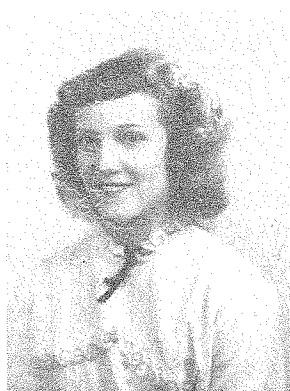
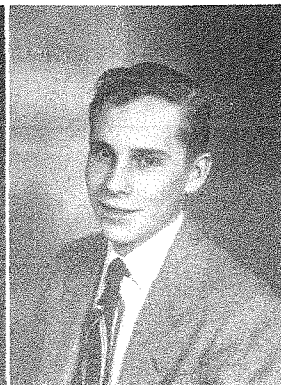
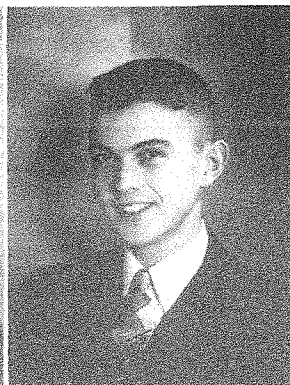
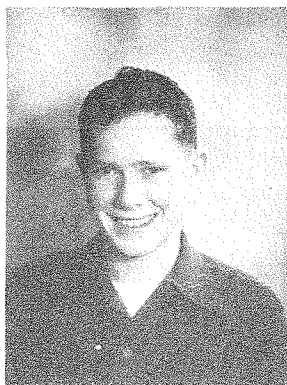
Dick Weig — Football 3, 4; Basketball 3, 4; Boys' Glee Club 4; Mixed Chorus 4; Student Council 4; Christmas Play 4; Track 4.

Bobby Wilkinson — Entered 4th year.

Juniors



Edna Ferguson, Junior Advisor, English, Library.



Betty Dilley
Jeannene Hurst
Patty Lavier

William Anderson
William Fish
Verda Kennedy
Albert Lee

Warner Berry
Daryl Heil
Robert Kersten
Duane Lubisher

Donald Derosier
Ethel Houlette
Arlene Kettelhut
Helen Miller

Juniors

Jacqueline Myers

Kent Ripley

Cecil Stoner

Kenneth Weepie

Alvin Oestrich

Jeanette Shostrom

John Trucano

Beverly Wilkinson

Norma Page

Kay Smiley

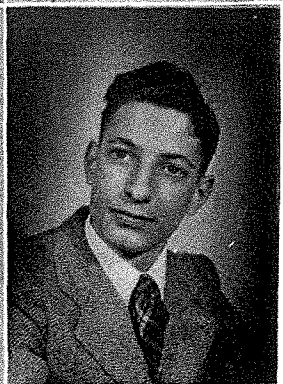
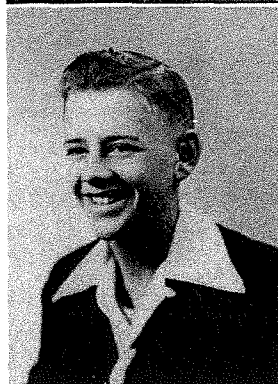
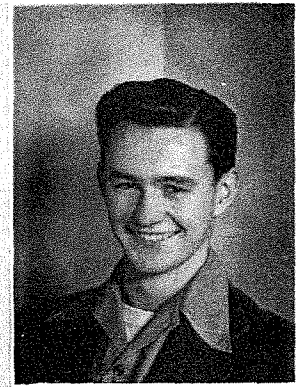
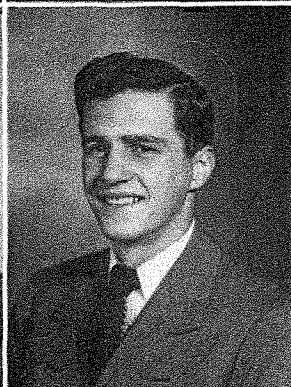
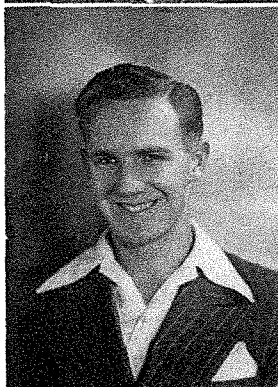
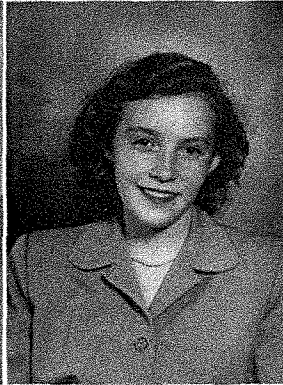
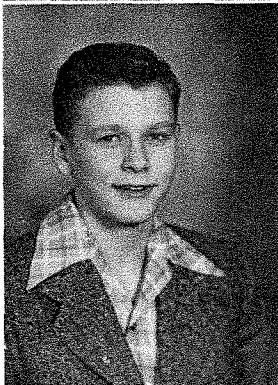
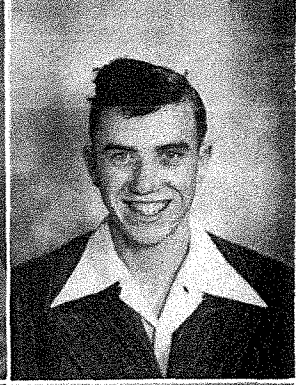
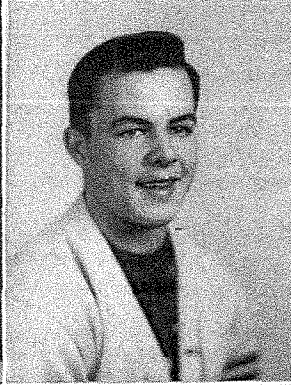
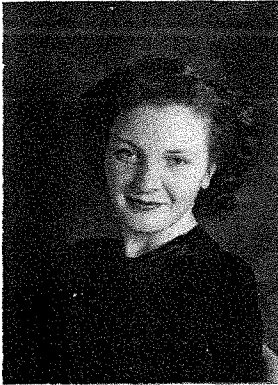
Elizabeth Vopat

Jerry Young

William Redl

Gene Spindler

Harry Wait



Jean Van Heuvelen, Junior
Advisor, Home Economics.

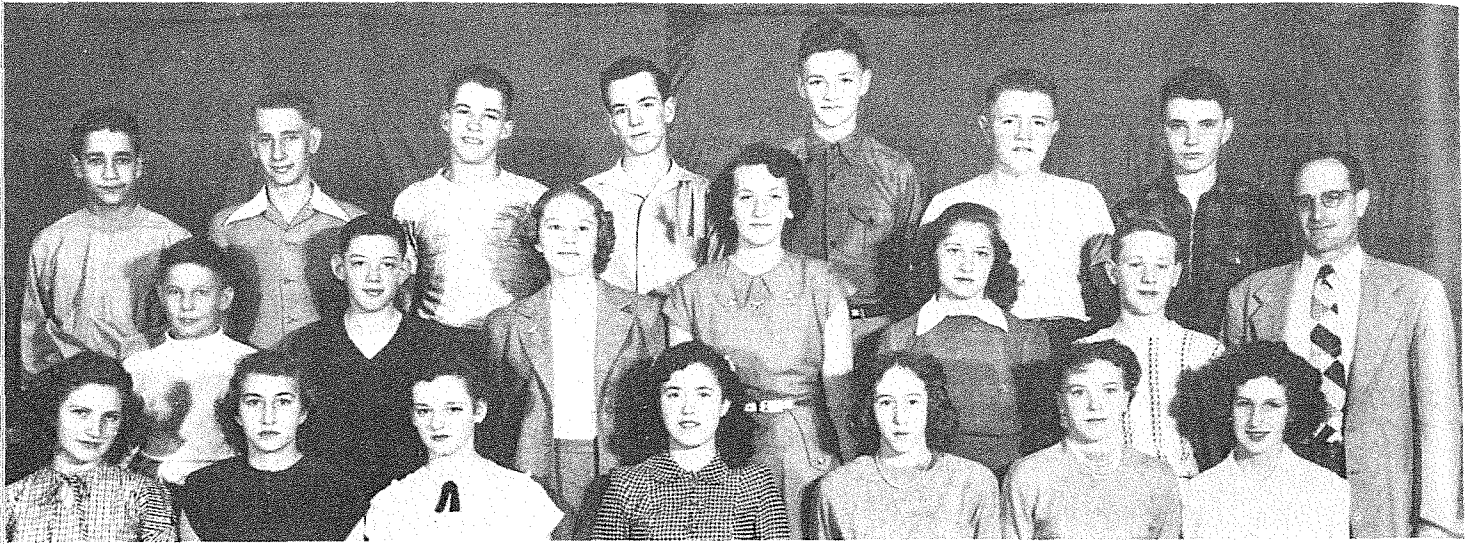


Not Pictured—Evelyn Adams, Ronald Averill, Mary Doscher, Larry Heil, George Lubker, Robert Sloss, Tom Taylor, Beverly Titus, Robert Neilson, and Carol Walker.

Sophomores, Mr. Minton's Home Room: First row, left to right—Betty Collins, Arly Yost, Verna Franzel, Claudette Zaiser, Lois Kettelhut, Mary Ann Redl, Norma Hansen.

Second row, left to right—Bob Yeamen, Melvin Farnsworth, Carol Gorder, Frances Beringer, Anita Grieb, Verne Hennen, Mr. Minton.

Third row, left to right—Doran Jacobs, Bill Reed, Jerry Flynn, Charles Davis, Raymond Hanson, Dennis Dyvig, John Maresh.

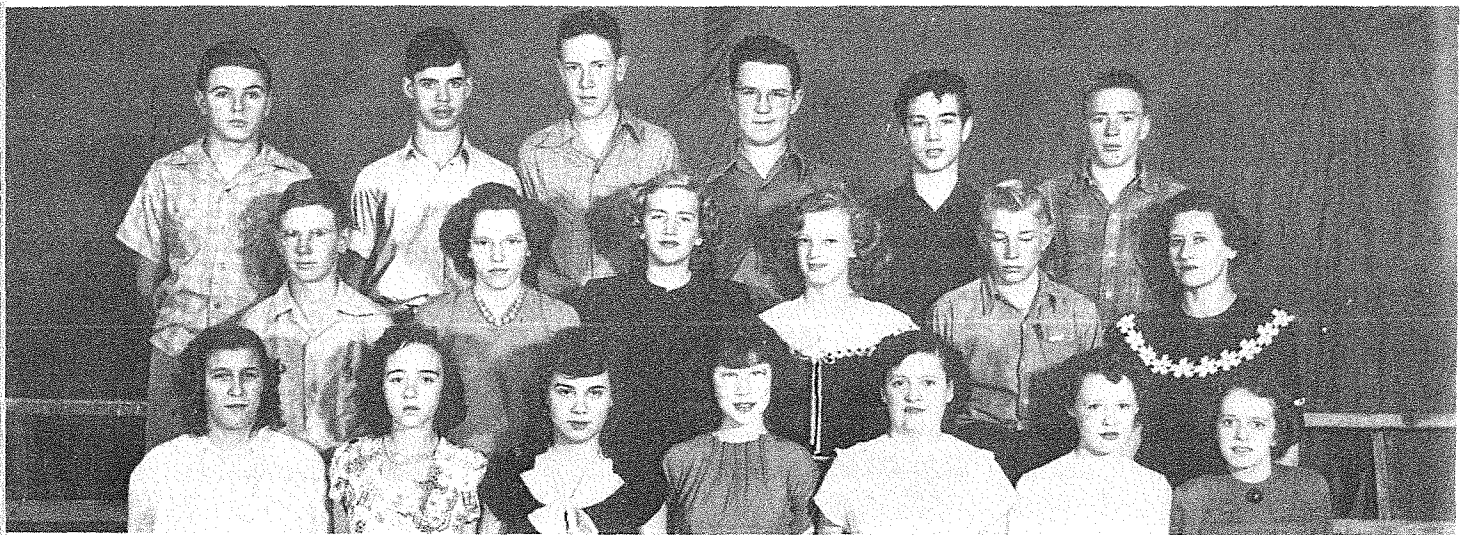


Elsie Krug, Sophomore Advisor, Girls' Physical Education.

Sophomores



Lucie Jensen, Mathematics.



Sophomores, Mrs. Krug's Home Room: First row, left to right—Bernice Sohn, Irene Closson, Mary DeHaven, Patty Hillery, Patty Trucano, Edwina Schopen, Marlene Peyton.

Second row, left to right—Alfred Lee, Marlene Mack, Marilyn Berger, Marilyn Thacker, Kenneth Nelson, Mrs. Krug.

Third row, left to right—Russell Stanley, Jim Hardy, Jim Jones, Wayne Hinchon, Charles Leslie, Leroy Johnston.



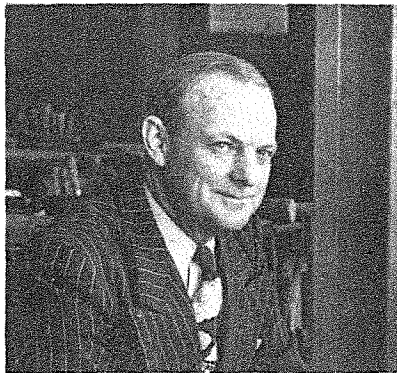
Freshmen, Mr. Conklin's Home Room: First row, Sherry Snapp, Delores West, Joan Tinnell, Beverly Ruth, Lila Mack, Gloria Hadden, Mary Pittenger, Helen Neavill, Gloria Fahrni.

Second row, left to right—John Houlette, David Anderson, Joanne McGinn, June Zaiser, Frances Hogan, Georgia Palmer, Dick Sargent, Mr. Conklin.

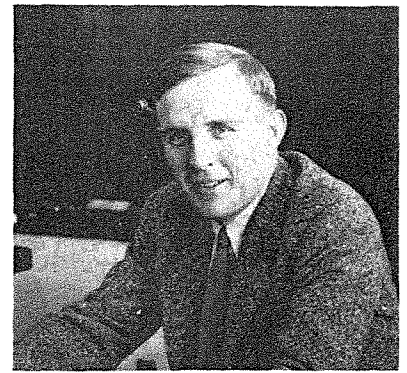
Third row, left to right—Wendell Bannigan, Darrel Fridrich, Jack Baggaley, Norman Lee, Dale Stoner, Irvin Burtzlaaff, Delbert Jones, Joe DiSanto.

Ora Horsfall, Freshman Advisor, Industrial Arts.

George Conklin, Freshmen Advisor, Science.



Freshmen



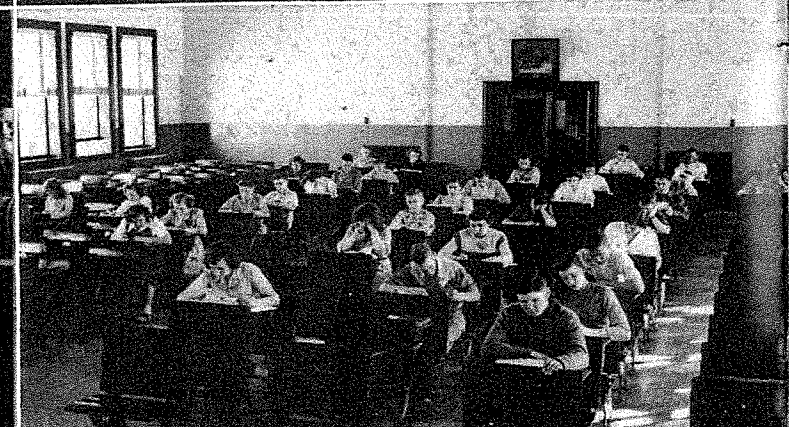
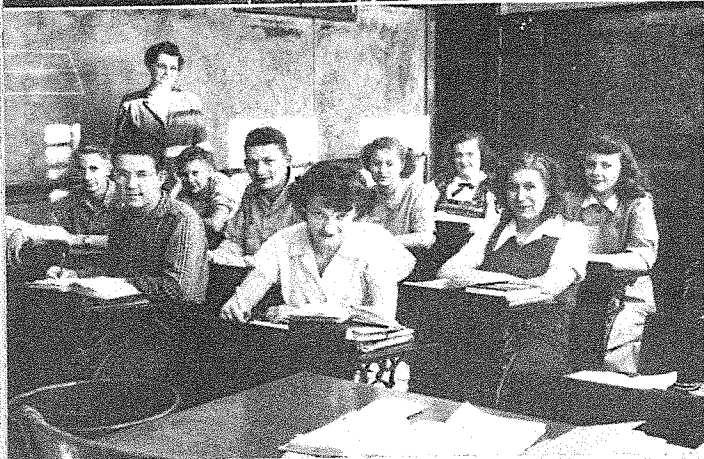
Freshmen, Mr. Horsfall's Home Room: First row, left to right—Barbara Speer, Darlene Berry, Lorraine Eatherton, Jeanne Fillmore, Marchita Schopen, Shirley Major, Gay Kent, Garnet Schuster, Nedra Myers.

Second row, left to right—Frank Garcia, Keith Bernard, Judy Wilkinson, Donna Dyer, Doris Dunn, Ardus Lantz, Wayne McGlone, Mr. Horsfall.

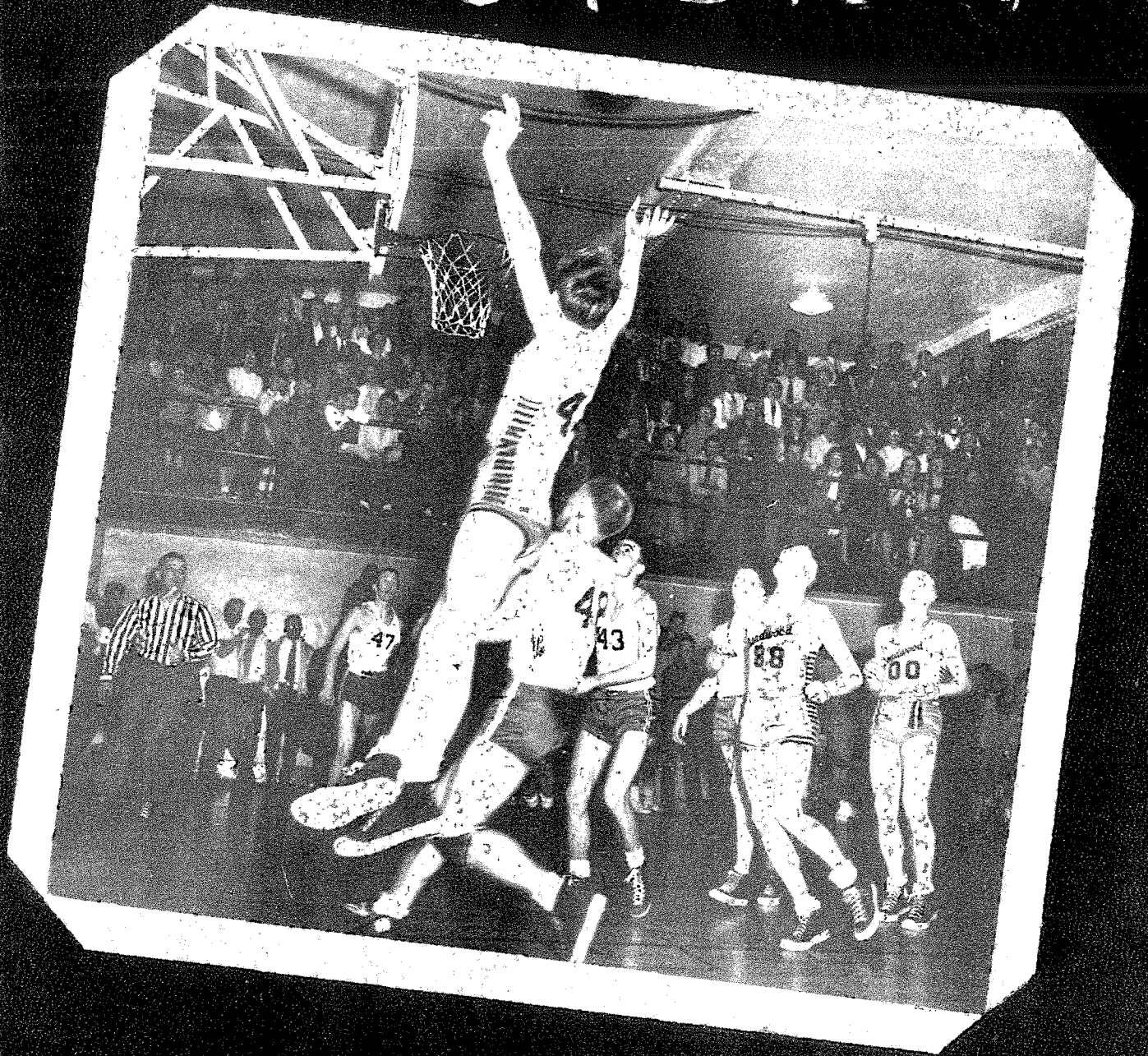
Third row, left to right—Robert Meverden, Keith Fox, James Beshara, Wesley Bannigan, Joe Graham, Vincent Eilers, John Drake, Leland Croghan.

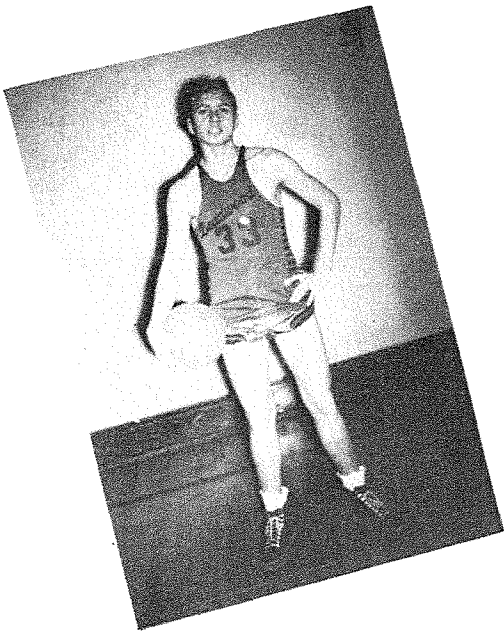


Classrooms

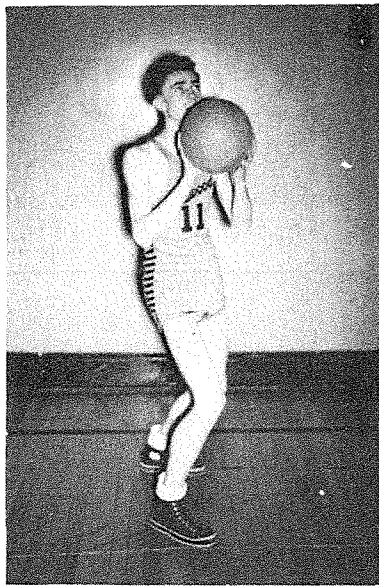


SPORTS

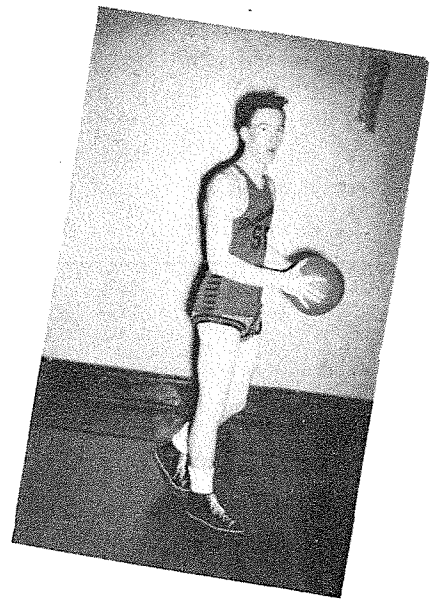




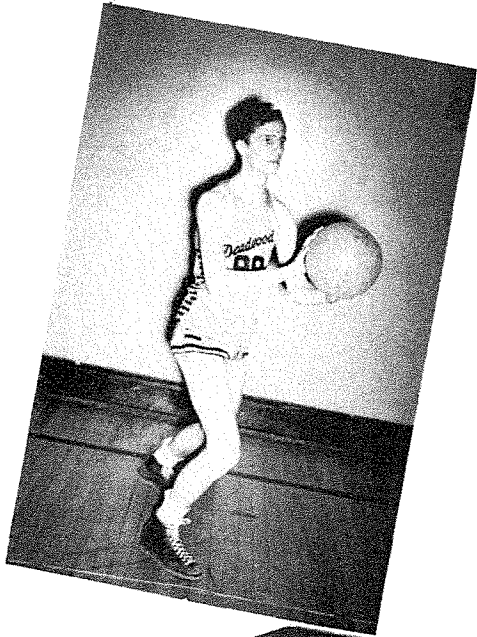
James Merritt—Forward.
Plenty good on those side shots.



Edward Becker—Guard.
He's got what it takes.



Leonard Fahni—Guard.
Sinking them from mid-court, his specialty.



John Trucano—Center.
A junior with high hopes. (Just kidding, John.)

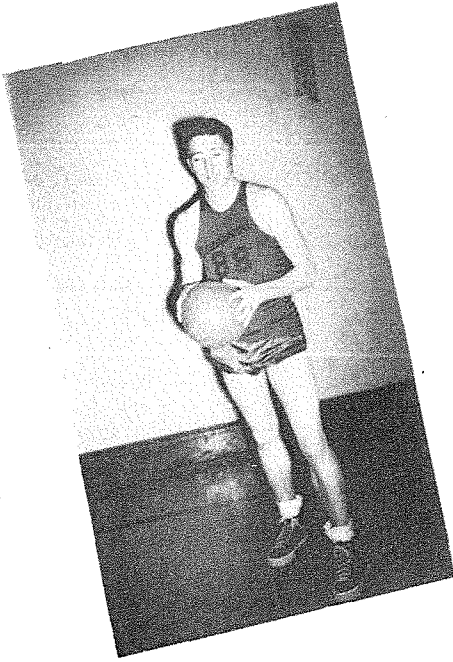


Dennis Dyvig—Forward.
Just a sophomore, but looks good.

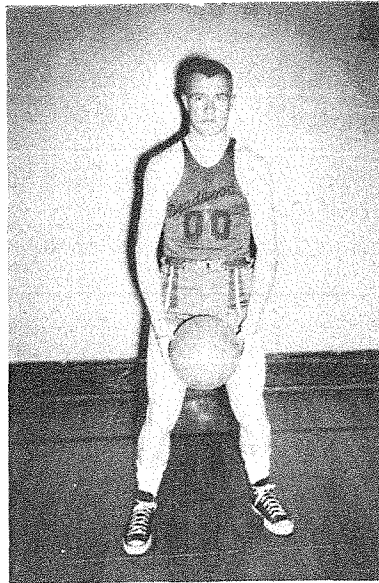
BASKETBALL SCHE

Opponent—	
Dec. 7 Spearfish
Dec. 9 Custer
Dec. 10 Hot Springs
Dec. 14 Lead
Jan. 11 Sturgis
Jan. 14 Belle Fourche
Jan. 18 Rapid City
Jan. 25 Rapid City
Jan. 27 Hot Springs
Feb. 1 Lead
Feb. 4 Spearfish
Feb. 8 Sturgis
Feb. 15 Belle Fourche
Feb. 21 Custer

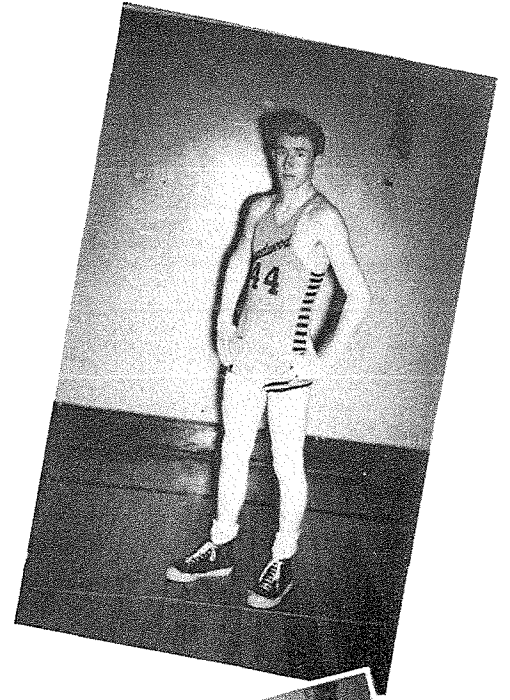
We've Got the Coach,



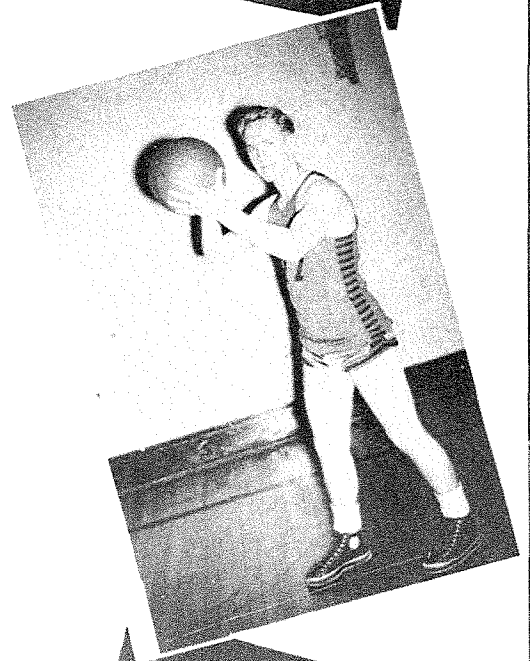
Dale Stoneberger—Guard.
A sharp shooter from way out.



Norman Oestreich—Forward.
A senior with lots of ability.



Maurice Etem—Center.
A tall guy with big hands.



Cecil Stoner—Forward.
Sure to be one of next year's ace players.

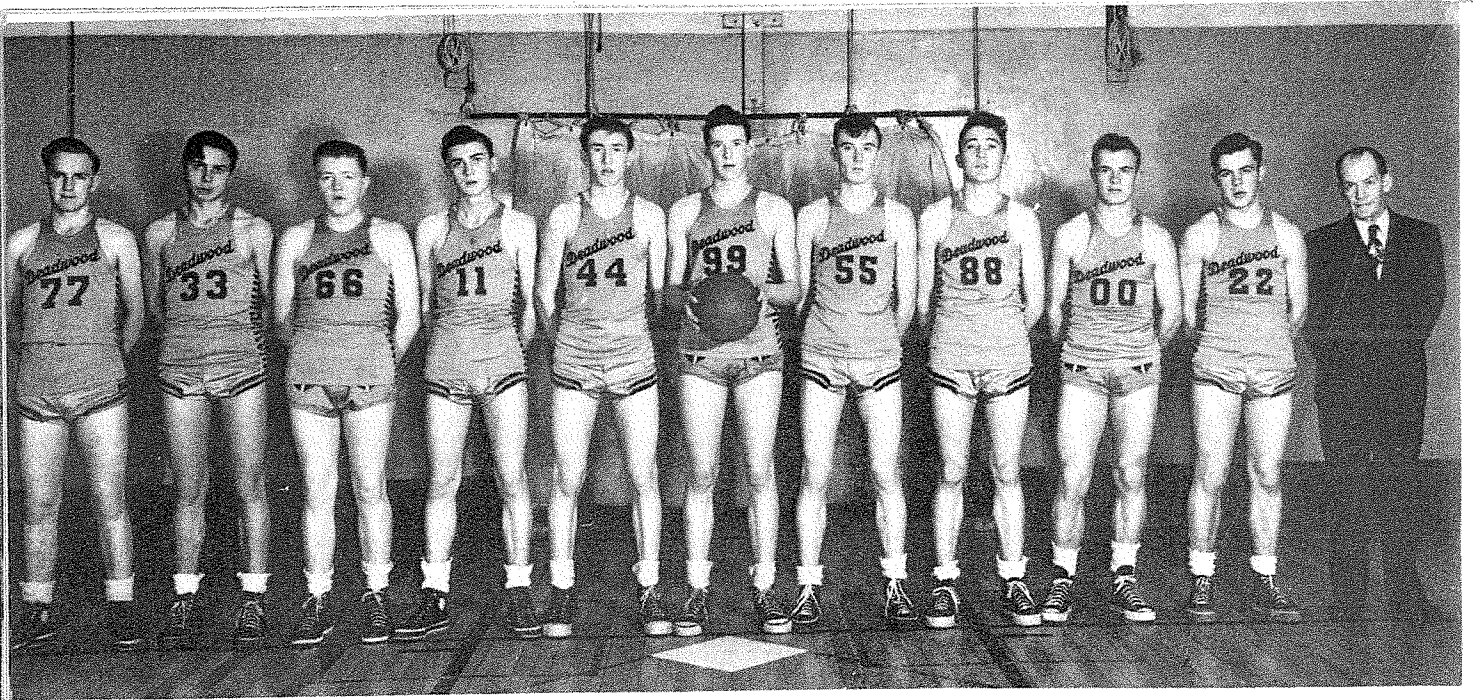


Alvin Oestreich—Guard.
Little brother who's coming up.

WTBALL SCHEDULE

	We	They
.....	23	43
.....	35	38
gs	24	31
.....	35	40
.....	45	40
rche	29	30
y	41	43
y	47	46
gs	38	30
.....	41	40
.....	37	47
.....	28	29
che	40	45
.....	38	31

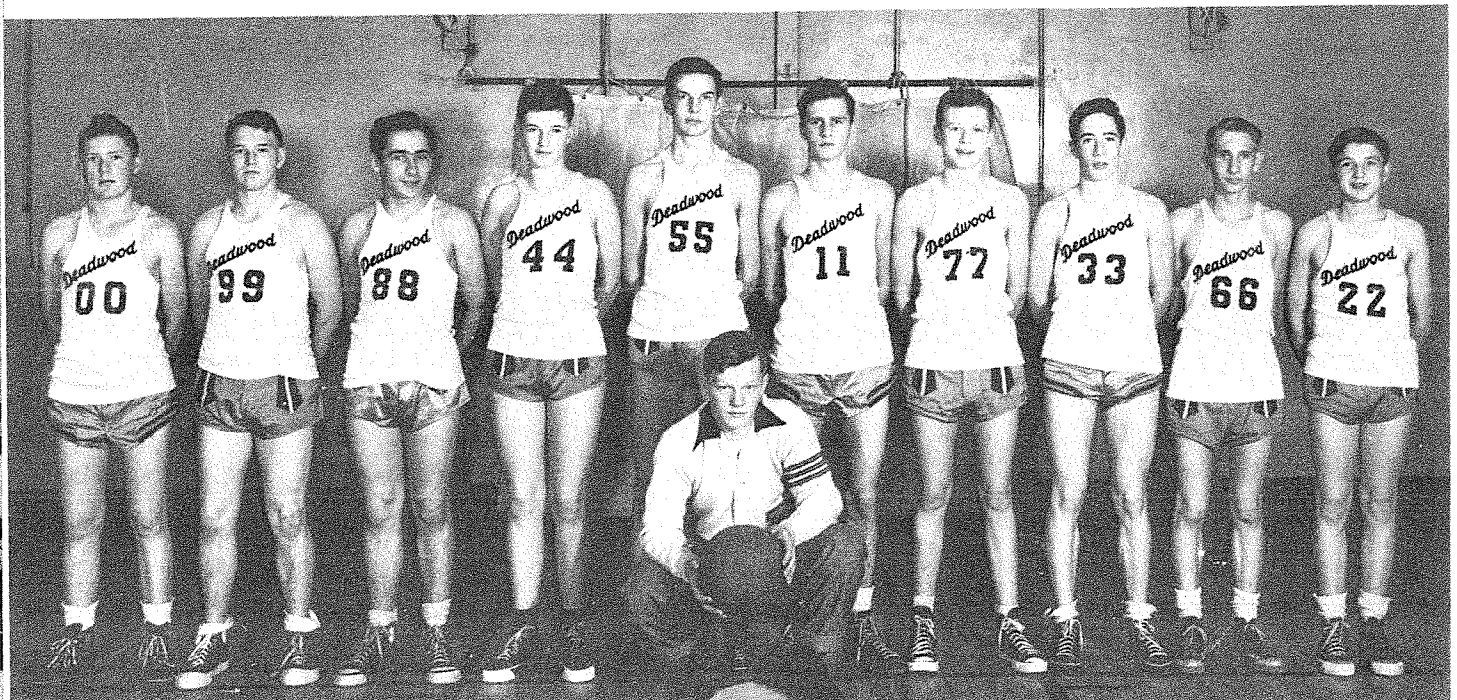
We've Got the Team!!



Basketball, A Team: Left to right—C. Stoner, L. Fahrni, D. Dyvig, J. Merritt, M. Etem, N. Lee, P. Becker, D. Stoneberger, N. Oestreich, A. Oestreich, Coach Ferguson.

Basketball

Basketball B Team: Left to right—B. Anderson, L. Heil, I Burtzloff, J. Baggaley, G. Lubker, J. Trucano, K. Ripley, A. Newman, B. Reed, D. Heil. B. Fish, Manager.

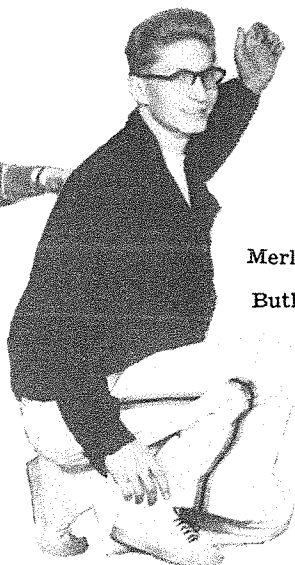


Go-Gang-Go!!

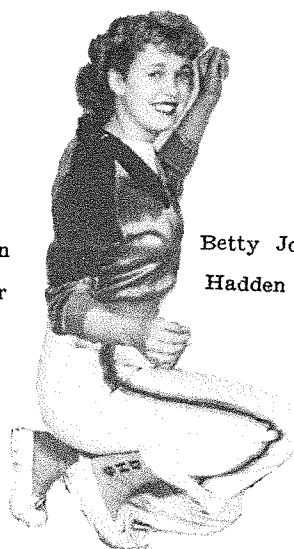
Cheerleaders



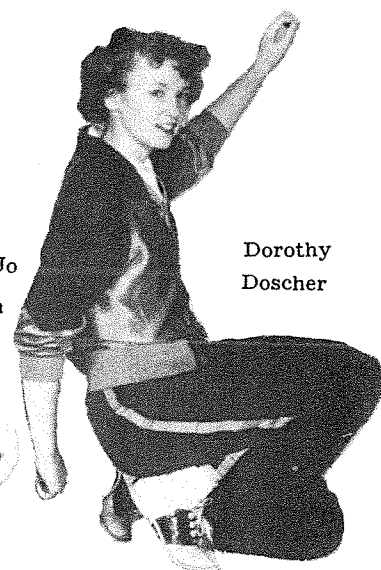
Mary Ann
Redl



Merlyn
Butler



Betty Jo
Hadden



Dorothy
Doscher

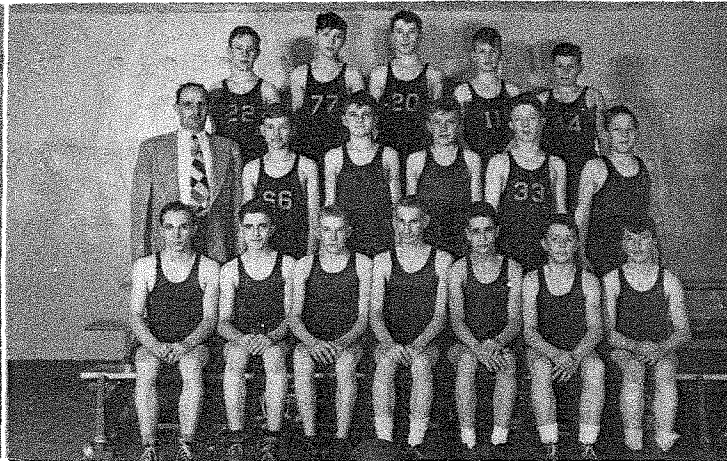
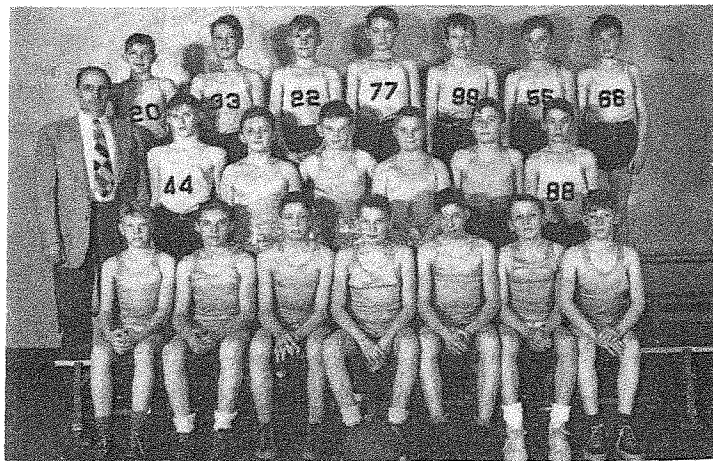
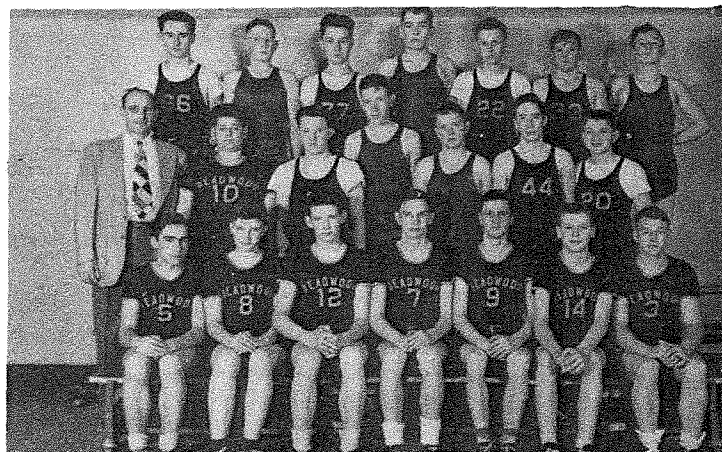
100-pound Team: First row, left to right—Jones, Meverden, McGlone, Yeaman, Bannigan, Houlette, Smiley.

Second row, left to right—Coach Minton, Newman, Onderizek, Larson, Berry, Mee, Sargent.

Third row, left to right—Bentz, Fridrich, Craig, Widdoss, Artus, Holso, Hutchenson.

85-pound Team: First row, left to right—Palmer, Chyba, Toppila, Bernard, Hardin, Klein, Newman. Second row, left to right—Coach Minton, Hobbs, Stoneberger, Veitl, Whitelock, Allen.

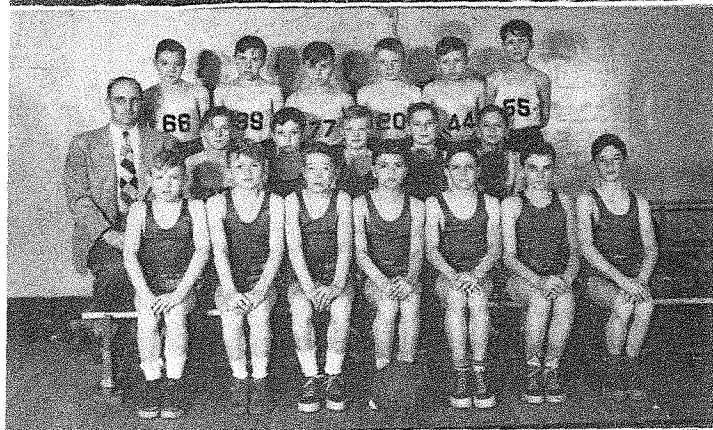
Third row, left to right—Alben, Fillmore, Bowen, Auer, Fox, Andres.



Heavyweights: First row, left to right—Burtzloff, Baggaley, Lee, Lubker, Trucano, Ripley, L. Heil.

Second row, left to right—Coach Minton, J. Di-Santo, Hennen, Jones, Anderson, Newman, D. Heil.

Third row, left to right—Wait, Snyder, Fridrich, Huene, Weepie, Barton, S. Craig.

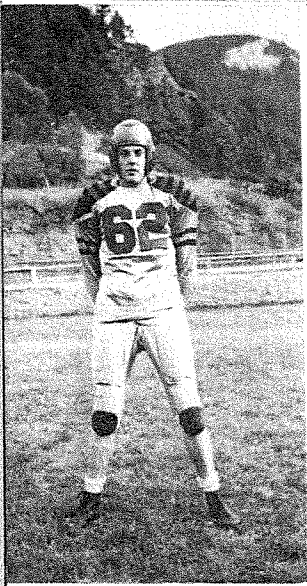


115-pound Team: First row, left to right—Derozier, Beshara, Nelson, Reed, Jacobs, Anderson, Jones.

Second row, left to right—Coach Minton, Averill, Morris, Martin, Jones, Croghan.

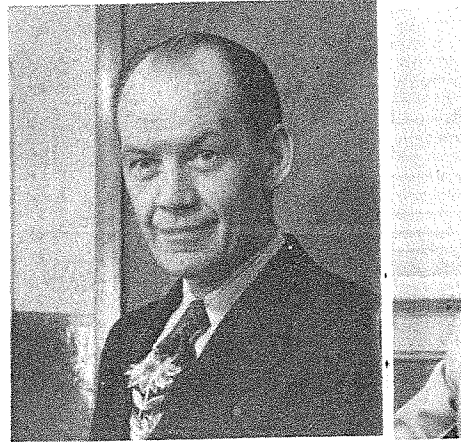
Third row, left to right—Hennen, Fox, Graham, Clark, L. DiSanto.

Grrr . . .



E. Becker, Back, DD, "Pete"

L. Fahrni, Back, D, "Leo"



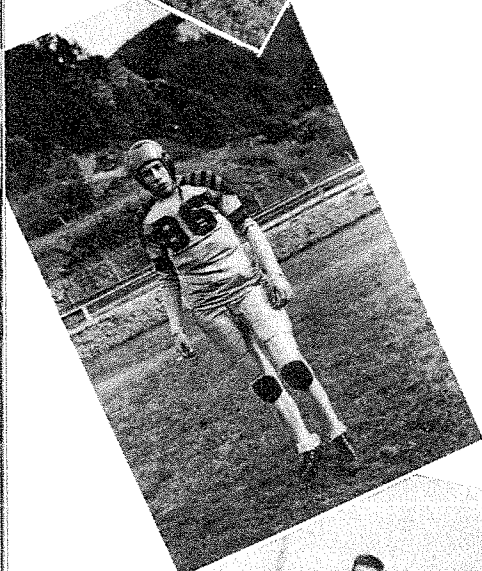
Stewart Ferguson, Head
Coach, Social Science.

M
vi
Pi

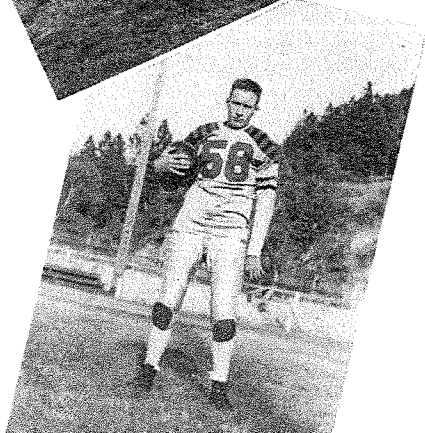
A. Newman, Back, D, "Peanuts"



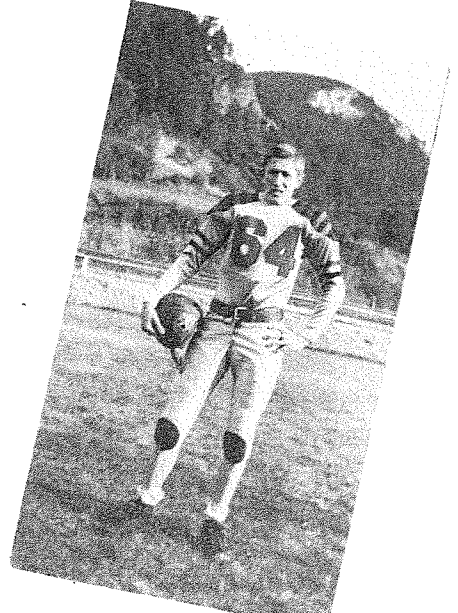
H. Mason, Back, DD, "Cracker"



D. Stoneberger, End, DDD, "Stony"



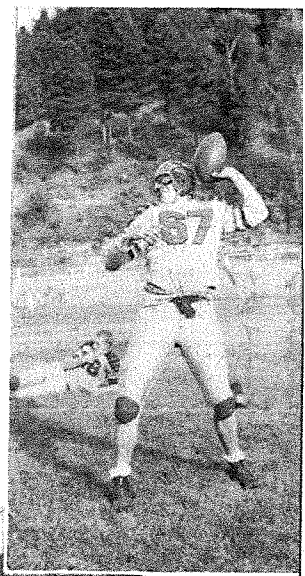
M. Etem, End, DD, "Turk"



FOOTBALL SCHEDULE

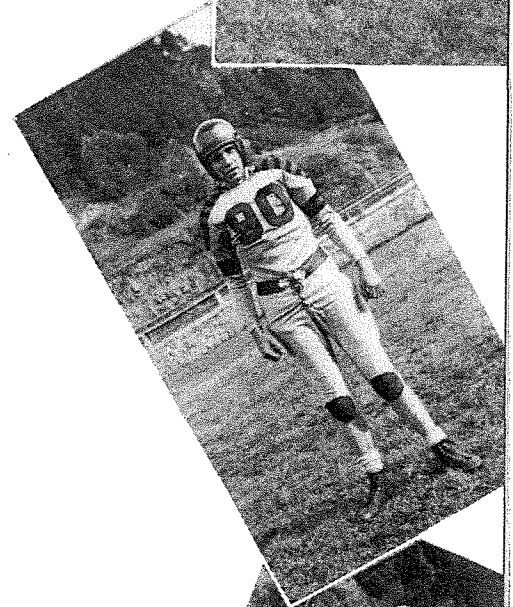
Opponent—	
Sept. 10	Gillette
Sept. 17	Custer
Sept. 24	Spearfish
Oct. 1	Rapid City
Oct. 7	Sturgis
Oct. 15	Belle Fourche
Oct. 22	Lead

Bears!!



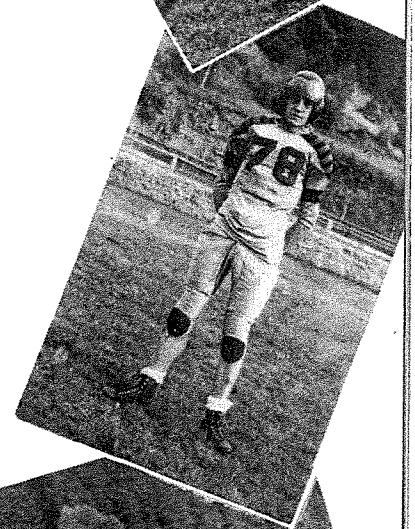
N. Oestreich, Back, DDD, "Norm"

J. Schunneman, Tackle, DD, "J. T."



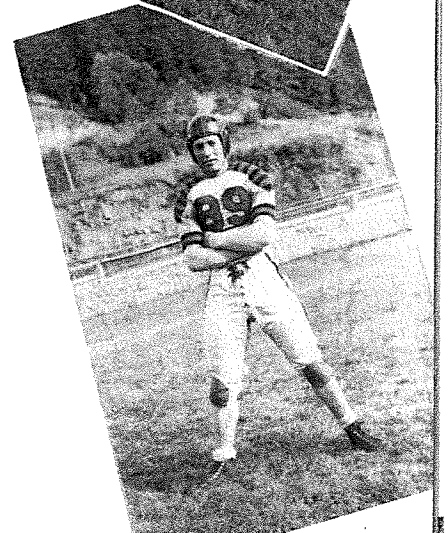
J. Merritt, End, "Mighty Mouse"

B. Jurisch, Guard, DD, "Bob"



G. Farnsworth, Center, DD, "Farnsy"

D. Hudson, End, "Doug"

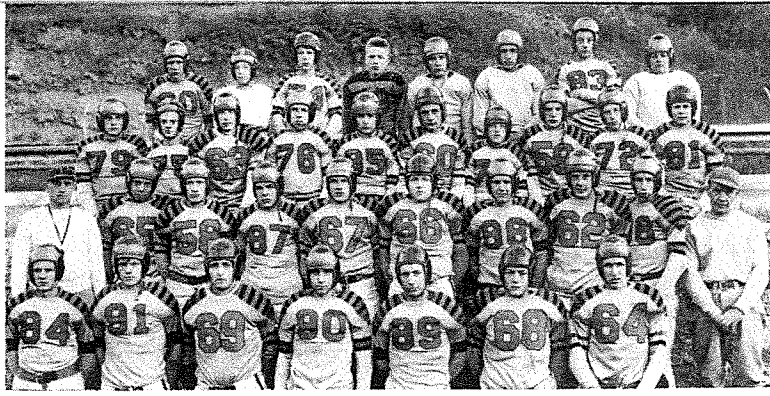


M. M. Minton, Sophomore Advisor, Assistant Coach, Boys' Physical Education.

ead

LL SCHEDULE

	We	They
.....	12	0
.....	19	7
.....	13	0
.....	0	26
.....	28	0
.....	7	0
.....	0	6



Football

Football: First row, left to right—John Trucano, Bill Fish, Tom Taylor, John Schunneman, Bob Jurish, Gene Farnsworth, Maurice Etem.

Second row, left to right—Coach Minton, Leonard Fahrni, Howard Mason, Alvin Oestreich, Norman Oestreich, Dennis Dyvig, Cecil Stoner, Edward Becker, Alfred Newman, Coach Ferguson.

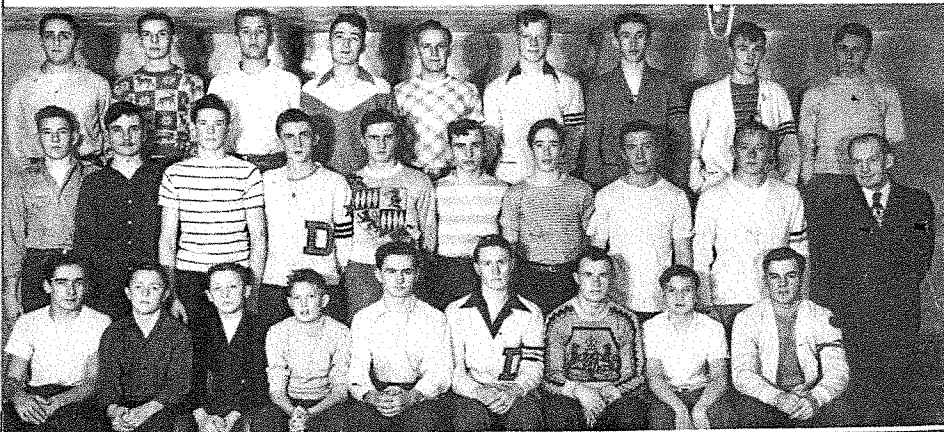
Third row, left to right—Jim Merritt, John Drake, Norman Lee, Wayne Hinchin, Harry Wait, Joe Graham, Melvin Farnsworth, George Lubker, Vincent Eilers, Kent Ripley.

Fourth row, left to right—Larry Heil, Wesley Bannigan, Delbert Jones, Leroy Johnston, Joe Claunch, Irvin Burtzloff, Darrell Fridrich, Joe DiSanto.

D Club: First row, left to right—Burtzloff, Anderson, Houlette, Yeaman, Wait, Mason, N. Oestreich, A. Oestreich.

Second row, left to right—Sorensen, Graham, Lee, Merritt, Trucano, Schuenman, Newman, Jurisch, Farnsworth, Coach Ferguson.

Third row, left to right—Taylor, Lubker, Weig, Stoneberger, Stoner, Fish, Etem, Becker, Fahrni.



"D" Club

G.A.A.



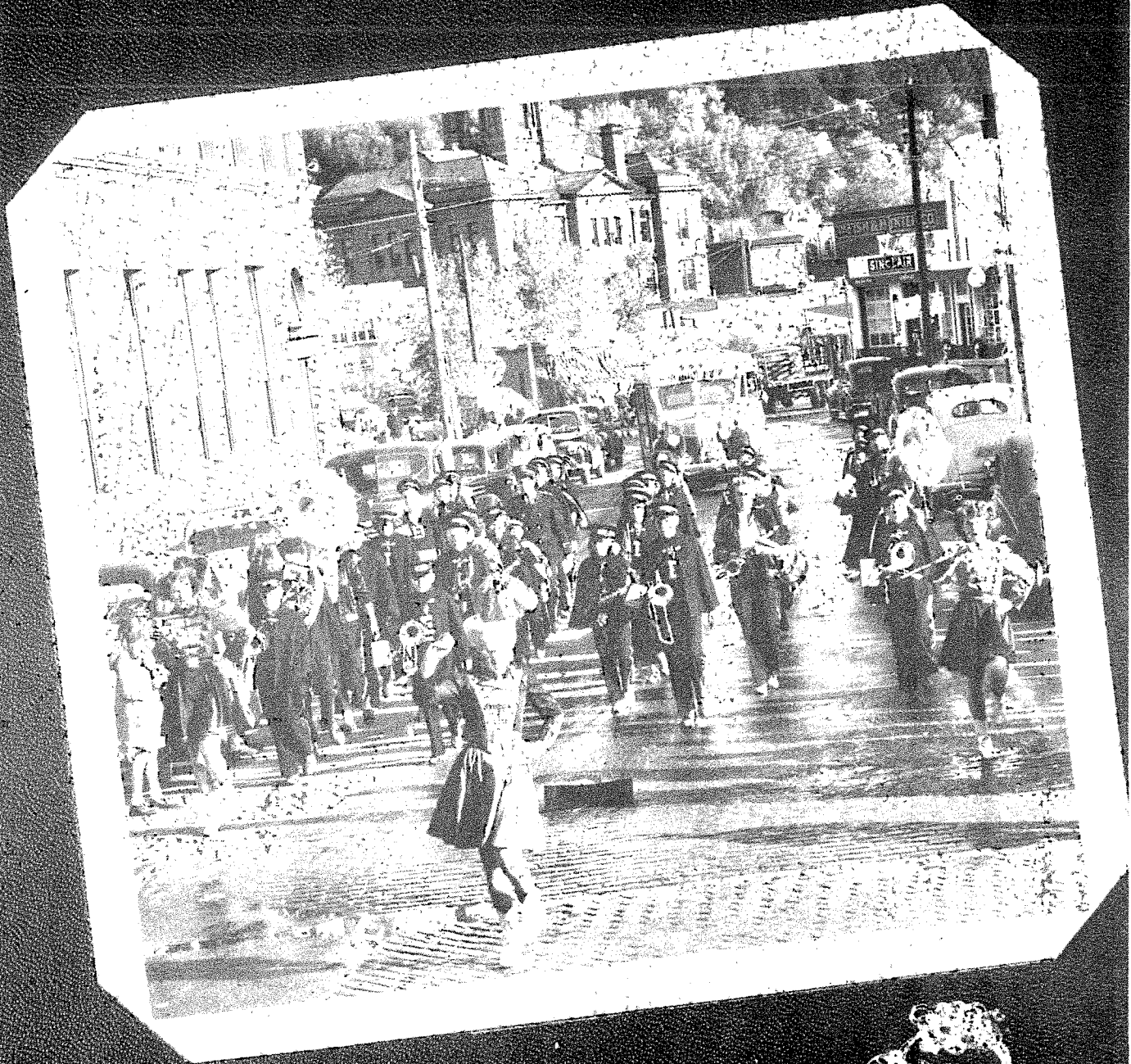
G. A. A.: First row, left to right—Garnet Schuster, Nedra Myers, Sherry Snapp, Gay Kent, Delores West, Mary Pittenger, Jeanne Fillmore, Doris Sorensen, Darlene Berry, Marlene Peyton, Barbara Speer, Gloria Fahrni.

Second row, left to right—Bernice Sohn, Beverly Ruth, Claudette Zaiser, Mary DeHaven, Patty Hillery, Patty Trucano, Mary Ann Redl, Bonnie Strickland, Shirley Major, Norma Hanson, Mrs. Krug.

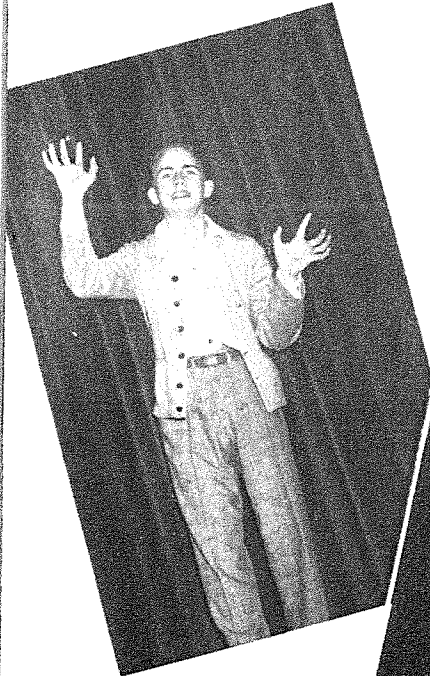
Third row, left to right—Verna Franzel, Alice Franzel, Bonnie Pendo, Lila Mack, Anita Grieb, Gloria Hadden, Betty Dilley, Jeanette Shostrom.

Fourth row, left to right—Georgia Palmer, Betty Roberts, Judy Wilkinson, Marilyn Berger, Frances Hogan, Frances Beringer, Jean Rosser, June Zaiser, Carol Gorder, Marilyn Thacker, Donna Dyer.

ACTIVITIES



Declam Winners



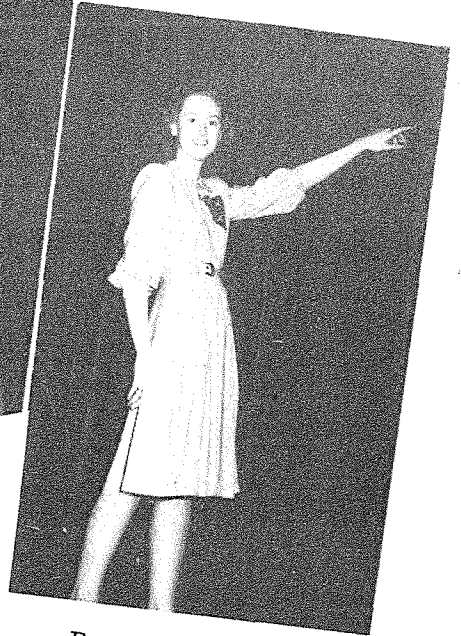
James Berger,
Regional winner in Dramatics



Roberta Rotter
District winner in Oratory



Marlene Peyton,
District winner in Poetry



Beverly Ruth,
District winner in Humorous



Declamatory: First row, left to right—Jeanne Fillmore, Beverly Ruth, Patty Hillery, Leland Croghan, Marlene Peyton.
Second row, left to right—Anita Grieb, Roberta Rotter, James Berger, Marilyn Berger, Betty Roberts, Mrs. Ferguson.



Debate: First row, left to right—Gay Kent, Patty Trucano, Patty Hillery, Joanne McGinn, Betty Roberts, Dorothy Doscher, Gloria Hadden.

Second row, left to right—Jerry Young, Carole Ripley, Harry Wait, Gretchen Robertson, Roberta Rotter, Leland Croghan, Mr. Nelson.



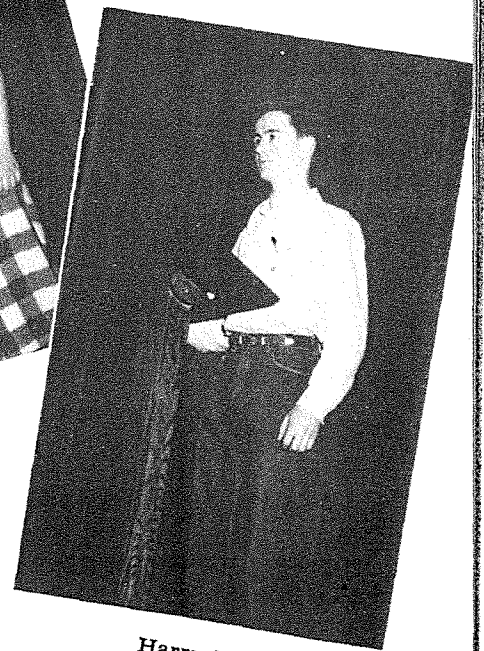
Gretchen Robertson



Roberta Rotter



Betty Roberts



Harry Wait



General Glee Club: First row, left to right—Gloria Fahrni, June Sargent, Helen Neavill, Joyce Acri, Betty Jo Hadden, Kay Smiley, Mary Pittenger, Carol Walker, Doris Sorenson, Gay Kent, Marlene Peyton, Nedra Myers.

Second row, left to right—Miss Craig, Jeanne Fillmore, Edwina Schopen, Mary Ann Redl, Arly Yost, Jacques Myers, Lois Kettelhut, Bonnie Starr, Claudette Zaiser, Donna Hosemann, Betty Collins, Norma Page, Gloria Hadden.

Third row, left to right—Norma Newman, Beverly Wilkinson, Bonnie Strickland, Mary DeHaven, Bonnie Pendo, Joanne McGinn, Georgia Palmer, Marchita Schopen, Shirley Major, Patty Hillery, Patty Trucano, Betty Dilley.

Fourth row, left to right—Judy Wilkinson, Marlene Mack, Anita Grieb, JoAnn Joslin, Carol Gorder, Jeannene Hurst, Arlene Kettelhut, Marilyn Berger, Betty Roberts, Dorothy Doscher, Jeanette Shostrom, Doris Dunn, Arduis Lantz.

Fifth row, left to right—Mary Doscher, Verda Kennedy, Helen Miller, Roberta Rotter, Patty Lavier, Frances Hogan, Gretchen Robertson, Celestine Engler, Joyce Veitl, Carole Ripley, Ethel Houlette, June Zaiser.



Mixed Chorus: First row, left to right—Gloria Fahrni, Mary Ann Redl, Carol Walker, Betty Collins, Donna Hosemann, Edwina Schopen, Patty Trucano, Doris Sorensen, Lois Kettelhut, Kay Smiley, Betty Jo Hadden, Joyce Acri.

Second row, left to right—Doran Jacobs, Bill Anderson, Kenneth Weepie, Dean Dybing, Wayne Hinchin, Jeanne Fillmore, Patty Hillery, Vincent Eilers, Bob Kersten, Charles Leslie, Don Derosier, Leland Croghan, Miss Craig.

Third row, left to right—Joanne McGinn, Judy Wilkinson, Bonnie Pendo, Betty Dilley, Beverly Wilkinson, Arlene Kettelhut, Mary Doscher, Jeannene Hurst, Jeanette Shostrom, Dorothy Doscher, Betty Roberts, Bonnie Starr, Anita Grieb.

Fourth row, left to right—JoAnn Joslin, Marilyn Berger, Carol Gorder, Carole Ripley, Joyce Veitl, Celestine Engler, Gretchen Robertson, Patty Lavier, Roberta Rotter, Ethel Houlette, Helen Miller, Verda Kennedy.

Fifth row, left to right—Bob Pouriea, Kent Ripley, Maurice Etem, Douglas Hudson, Albert Lee, George Lubker, Tom Taylor, Dale Stoneberger, John Trucano, Harry Wait, Jim Berger.

Special Glee Club: First row, left to right Helen Neavill, Doris Sorensen, Carol Walker, Mary Pittenger, Bonnie Starr, Gloria Hadden, Shirley Major, Jeanne Fillmore, Kay Smiley, Betty Jo Hadden, Joyce Acri, Marlene Peyton.

Second row, left to right Miss Craig, Edwita Schopen, Claudette Zaiser, Patty Trucano, Patty Hillery, Jacques Myers, Beverly Wilkinson, Betty Dilley, Donna Hosemann, Mary Ann Redl, Betty Collins, Lois Kettelhut.

Third row, left to right Georgia Palmer, Ardu Lantz, Jeanette Shostrom, Joanne McGinn, JoAnn Joslin, Carol Gorder, Marilyn Berger, Betty Roberts, Dorothy Doscher, Anita Grieb, Bonnie Pendo, Judy Wilkinson, Norma Newman.

Fourth row, left to right June Zaiser, Ethel Houlette, Carole Ripley, Joyce Veitl, Celestine Engler, Gretchen Robertson, Patty Lavier, Roberta Rotter, Verda Kennedy, Helen Miller, Mary Doscher, Jeannene Hurst.



Acapella Choir: First row, left to right—Helen Neavill, Doris Sorensen, Mary Pittenger, Mary Ann Redl, Donna Hosemann, Edwina Schopen, Patty Hillery, Patty Trucano, Jeanne Fillmore, Kay Smiley, Betty Jo Hadden, Joyce Acri, Marlene Peyton.

Second row, left to right—Miss Craig, Beverly Wilkinson, Georgia Palmer, Bonnie Starr, Anita Grieb, Joanne McGinn, Judy Wilkinson Betty Roberts, Dorothy Doscher, Ardu Lantz, Lila Mack, Bonnie Pendo.

Third row, left to right—Jeanette Shostrom, Jeannene Hurst, Marilyn Berger, Carol Gorder, JoAnn Joslin, Roberta Rotter, Patty Lavier, Gretchen Robertson, Joyce Veitl, Ethel Houlette, Verda Kennedy, Helen Miller, Mary Doscher.



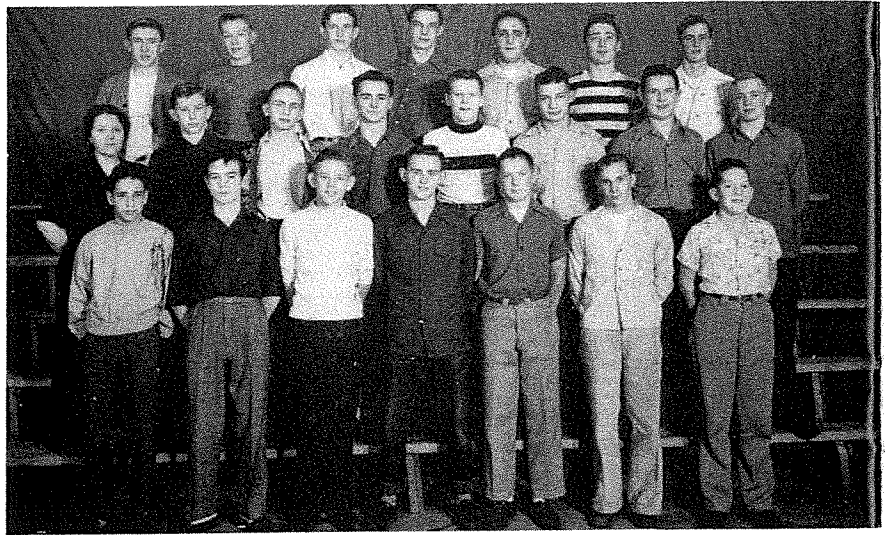


Senior Octette: Left to right — Joyce Veitl, Betty Roberts, Bonnie Starr,, Gretchen Robertson, Donna Hosemann, Roberta Rotter, Bonnie Pendo, Dorothy Doscher.

Boys' Glee Club: First row, left to right —Doran Jacobs, Charles Leslie, Kenneth Weepie, Bob Kersten, Bill Anderson, Don Derosier, Leland Croghan.

Second row, left to right—Miss Craig, Vincent Eilers, Jim Berger, Harry Wait, Kent Ripley, Bob Pouriea, Wayne Hitchen, Dean Dybing.

Third row, left to right —Maurice Etem, Douglas Hudson, Albert Lee, George Lubker, Tom Taylor, Dale Stoneberger, John Trucano.



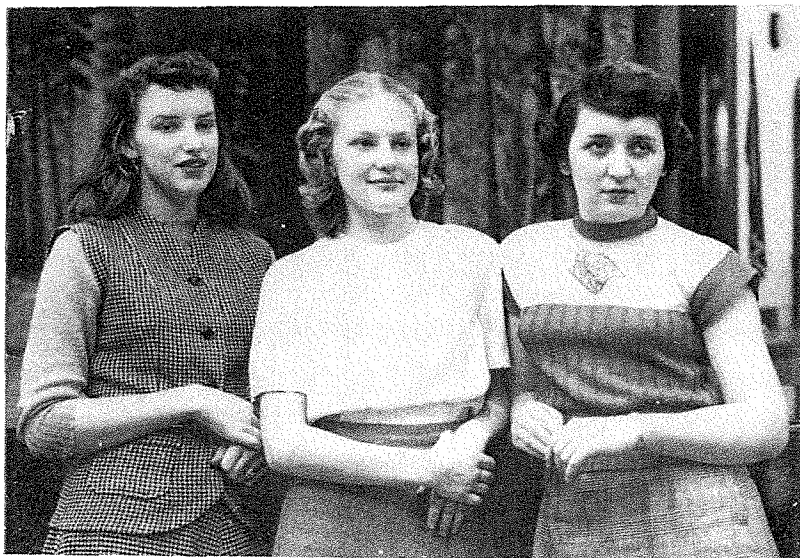
Sophomore Octette: Left to right — Marlene Peyton, Patty Hillery, Edwina Schopen, Marilyn Berger, Patty Trucano, Carol Gorder, Mary Ann Redl, Anita Grieb.

Junior Octette: Left to right—Kay Smiley, Ethel Houlette, Jeanette Shostrom, Patty Lavier, Beverly Wilkinson, Helen Miller, Betty Dilley, Mary Doscher.



Mixed Octette: Left to right—Dean Dying, Helen Miller, Patty Lavier, Harry Wait, Ethel Houlette, John Trucano, Bob Kersten, Mary Doscher.

Trio: Left to right — Patty Lavier, Carol Gorder, Ethel Houlette.



Dramatics



Mary Craig, Vocal Music,
Dramatics.

Junior Play

Junior Play: Standing, left to right—Beverly Wilkinson, Bob Kersten, Harry Wait, Tommy Taylor, Arlene Kettelhut, Jeanette Shostrom, John Trucano, Jerry Young, Jacques Myers.
Sitting, left to right—Kay Smiley, Ethel Houlette, Patty Lavier, Helen Miller, Mary Doscher.





Dramatic Club: Left to right—Marchita Schopen, Lorraine Eather-
ton, Doris Dunn, Bonnie Starr, Arduis Lantz, Gay Kent, JaAnn Joslin.





Bruin Staff: First row, left to right—Gloria Fahrni, Jeanne Fillmore, Doris Sorensen, Mary Ann Redl, Gloria Hadden, Beverly Ruth, Patty Hillery, Patty Trucano, Betty Collins, Betty Jo Hadden, Joyce Acri, Marlene Peyton.

Second row, left to right—Doran Jacobs, Anita Grieb, Betty Roberts, Bonnie Starr, Jeannene Hurst, Carol Gorder, Marilyn Berger, Bonnie Pendo, Joanne McGinn, Leland Croghan, Mr. Brainard.

Third row, left to right—Carole Ripley, Joyce Veitl, Gretchen Robertson, Jimmy Berger, Gene Spindler, Howard Mason, Charles Leslie, Patty Lavier, Roberta Rotter, Verda Kennedy.

We Kept The Daily Record

Bruin Staff Editors: Gene Spindler, Assistant Editor; Carole Ripley, Exchange Editor; Jim Berger, Editor; Gretchen Robertson, Personal Items Editor; Howard Mason, Sports Editor.



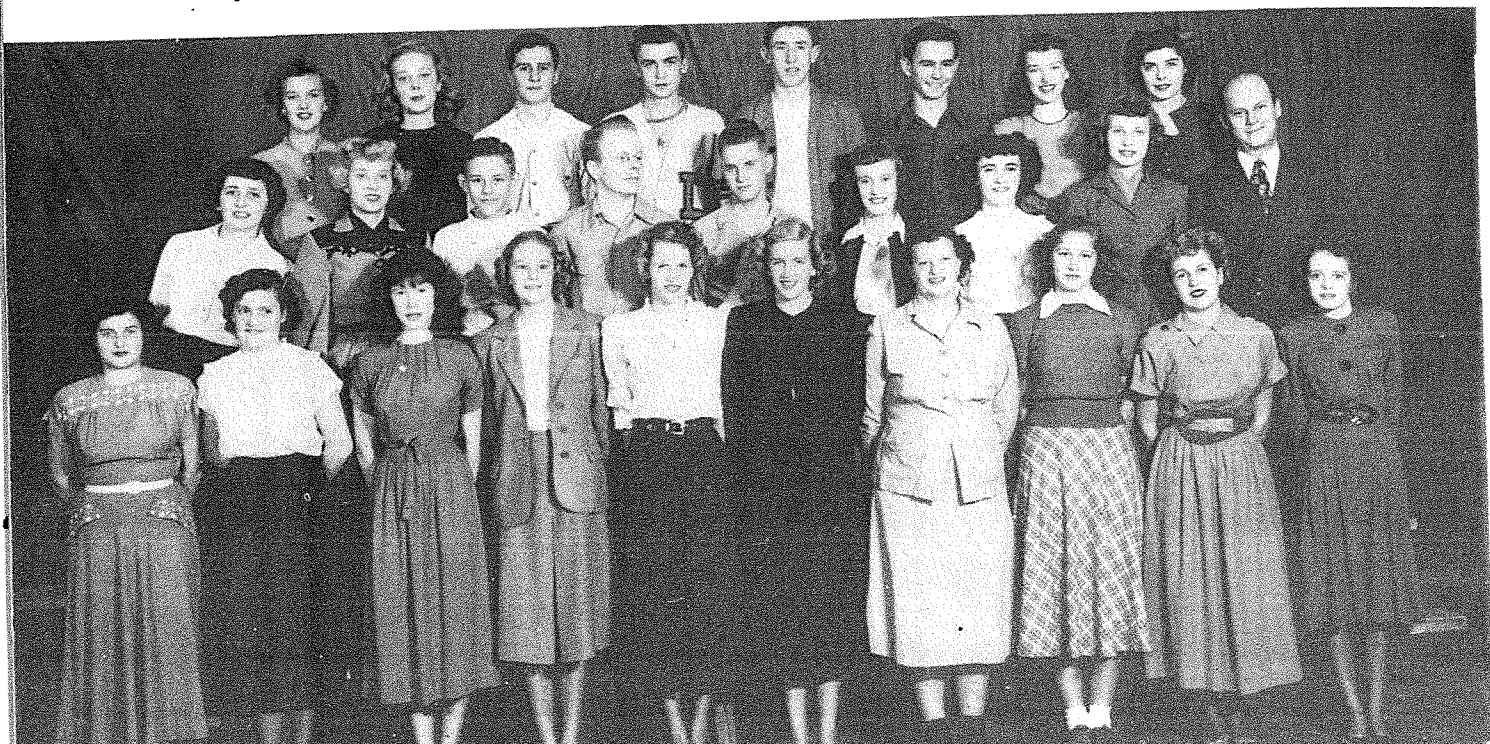


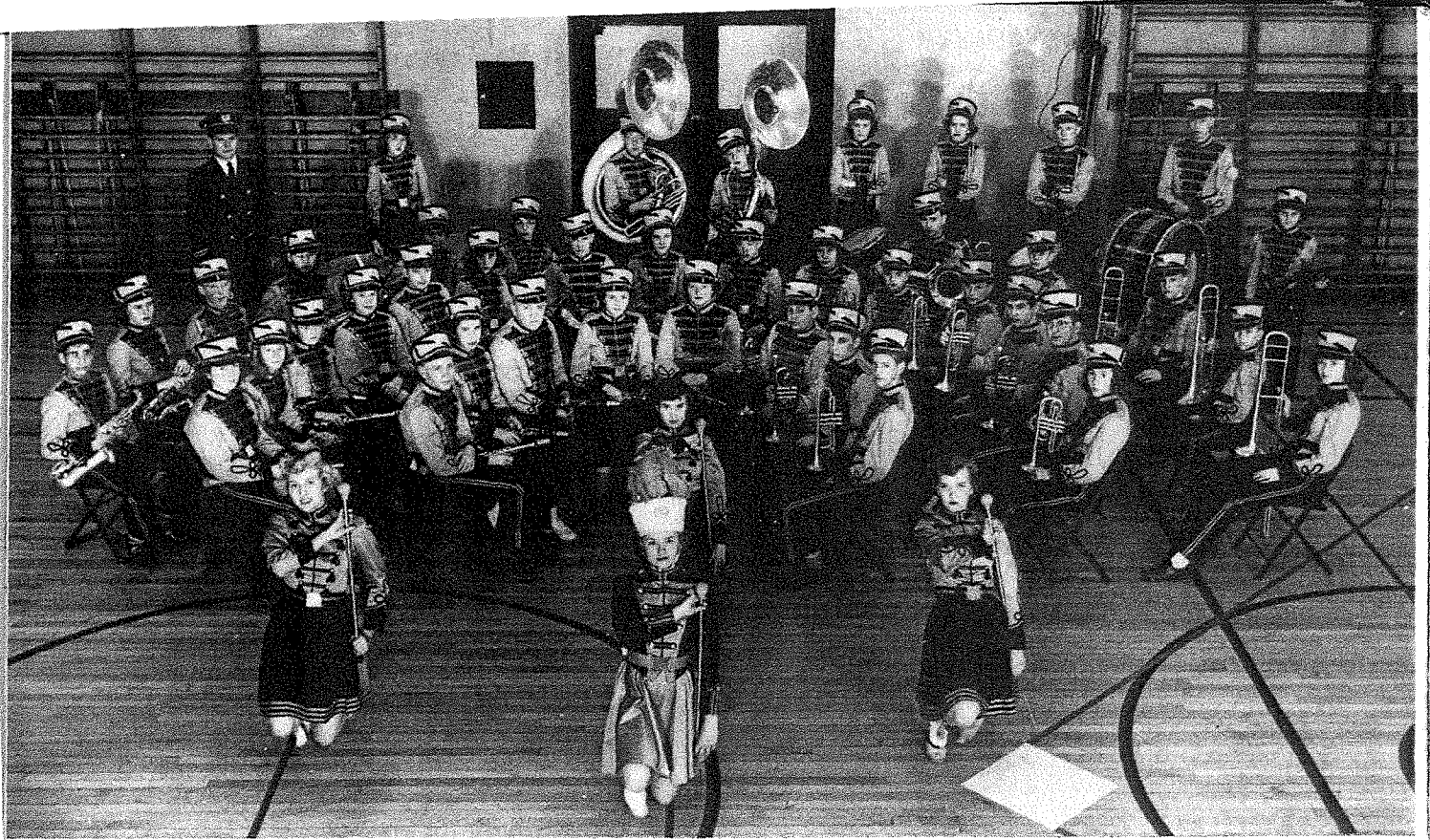
Franklin Brainard, Publications Advisor, English, Social Science, Journalism.

Annual Staff Leaders: Stanley Reed, Photography Chairman; Roberta Rotter, Art Chairman; Anita Grieb, Assistant Editor; Gene Spindler, Editor; Gretchen Robertson, Assistant Editor; Ethel Houlette, Editorial Chairman; John Trucano, Business Chairman.

We Edited The Album

Annual Staff: First row, left to right—Joyce Acri, Patty Trucano, Patty Hillery, Carol Gorder, Verda Kennedy, Marilyn Berger, Betty Roberts, Anita Grieb, Betty Jo Hadden, Marlene Peyton.
 Second row, left to right—Ethel Houlette, Carole Ripley, Kenneth Weepie, Gene Spindler, Stanley Reed, Jeanette Shostrom, Jeannene Hurst, Helen Miller, Mr. Brainard.
 Third row, left to right—Joyce Veitl, Gretchen Robertson, John Trucano, Jim Merritt, Maurice Etem, Harry Wait, Patty Lavier, Roberta Rotter.





Band: First row, left to right—Dean Dybing, Viola Coppo, Dennis Dyvig, Joanne McGinn, Betty Roberts, Joe DiSanto, Don Derosier, Dale Stoner.

Second row, left to right—Evelyn Adams, Bettly Kettelhut, Gene Hennen, Genevieve Jacobson, Mike Averill, Janet Jacobson, Eldon Bowen, Larry DiSanto, Charles Leslie, Wayne Hinchey, Lois Kettelhut.

Third row, left to right—Doran Jacobs, Betty Vopat, Paul Snyder, Gaylin Thompson, Mary Pittenger, Katherine Wagner, Harry Wait, Bill Hardin, Dick Dunwiddie, Reece Palmer, Arlene Kettelhut.

Fourth row, left to right—standing—Mr. Gleason, Shirley Major, Wesley Bannigan, Vern Hennen, Delores Hudson, Marilyn Berger, Bill Anderson, Douglas Hudson, Marcia Pavolich.

Majorettes, left to right—Carole Ripley, Donna Hosemann, Joyce Veitl, Dorothy Doscher, head majorette.

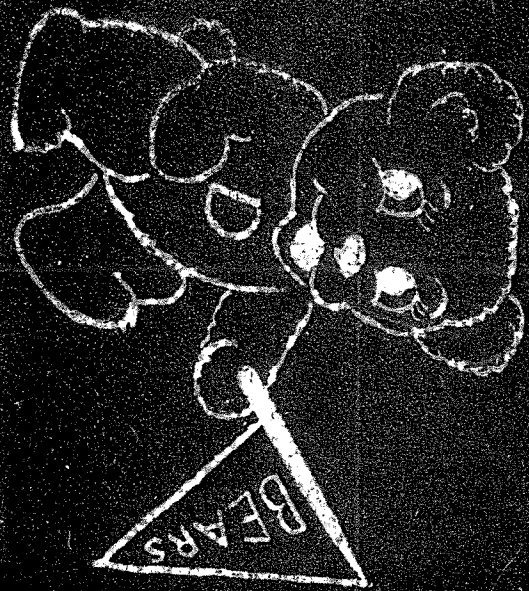
Band



Majorettes: Carole Ripley, Dorothy Doscher, Donna Hoseman.



Kenneth Gleason, Band and Instrumental Music.



Queens



CAROLE RIPLEY, All-School Attendant.



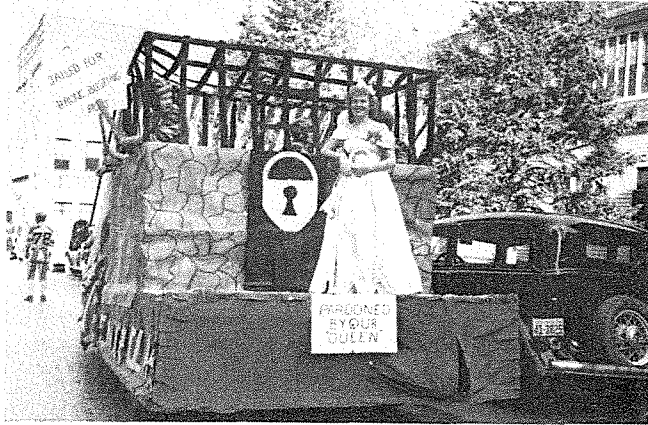
BONNIE PENDO, All-School Queen.



ROBERTA ROTTER, All-School Attendant.



All-School Float



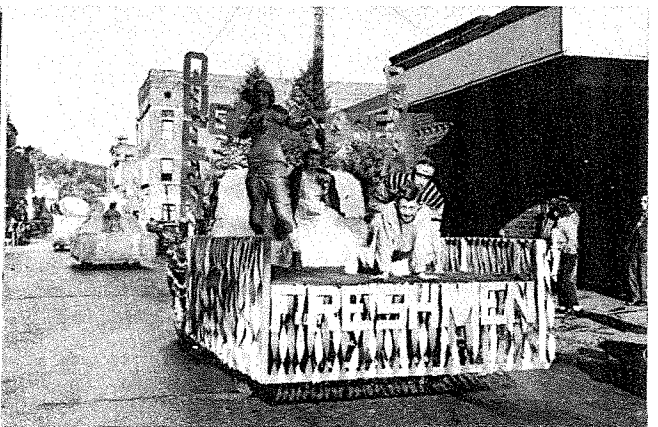
Betty Jo Hadden, Senior Queen



Arlene Kettelhut, Junior Queen



Marilyn Thacker, Sophomore Queen



Gloria Fahrni, Freshman Queen

Coronation Ceremony



— SPONSORS —

Adams Bros. Co.	Hendrie and Bolthoff Co.
Al's Pharmacy	Dr. Glen Heidepriem
Albert Auer's Sinclair Service	Dr. F. S. Howe
Auer's Service Station	The Hub
Automobile Bankers of South Dakota	Jeffries'
Geo. V. Ayres & Co., Inc.	K. D. S. J.
Beckers' Walgreen Agency	Kelley's Dairy
Ben Franklin Store	Carl H. Kubler Insurance
Dr. John J. Berry Jr.	K. W. Motor Co.
Beshara's Super Market	Lardis Shoe Shop
Black Hills Mercantile Co.	LeMar Motor and Appliance
Black Hills Novelty Co.	Leo's Shoe Shop
Black Hills Power and Light Co.	Liberty Auto Body
Black Hills Studios, Inc.	Allen Lewis Sheet Metal Works
Bodega Cafe	Mapleway Bowling Alley
Buehler's Funeral Home	Montgomery Ward and Co.
Butler's Jewelry	Morris Jewelry
Clark's Firestone Store	Dave Miller Stores
Clark's Real Estate	The Mint Cafe
Curnow's Grocery	Newell's Drug Store
J. P. Croff & Co.	The New York Store
The Cupboard	Opou Motor Co.
A. A. Coburn, Insurance	O'Neill Photo Co.
Dakota Stationers	Parker and Parker, Lawyers
Davis Motors	Dr. T. H. Proctor
Deadwood Chamber of Commerce	Ruth Bros. Machine Works
Deadwood Pioneer-Times	Sasse Market
Dyvig's Music Store	Schwarzwald Furniture Co.
Eddie's Tire and Glass	Seth R. Ellis, Insurance
First National Bank of the Black Hills	A. H. Shostrom, Insurance
Fish and Hunter Co.	Schultz's Refrigerated Lockers
Fountain Electric Service	Dr. J. C. Smiley
Franklin Grill	Carl Stoneberger, Lumber and Building
Franklin Hotel	Sunnyside Grocery
Ge'b Industries	F. L. Thorpe Jewelry Co.
Frank R. Gnirk	Tidewater-Pontiac Sales
Goldberg Grocery	Trading Post
Grab It 'N' Growl	Twin City Motors
	Dr. V. B. Van Heuvelen
	Cleo Wells' Funeral Home

We wish to express our thanks and appreciation to the above individuals and firms who were kind enough to sponsor our Annual.

BEAR LOG STAFF