

1948

To "Joey"  
Louise  
Dorise

W-

50

14

11

10

10

10

10

From  
Mrs. [unclear]  
Mrs. [unclear]

The Bear Log

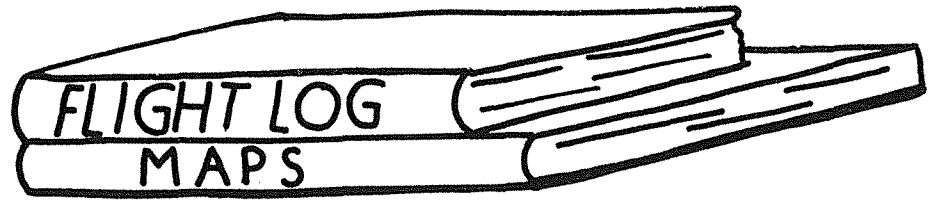
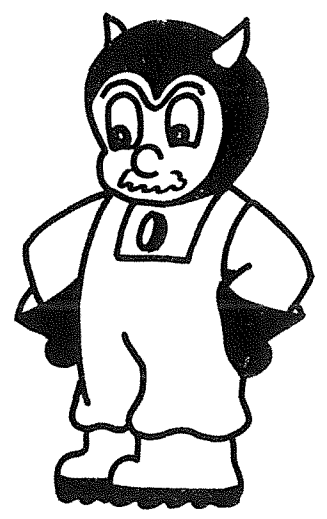
Bombsight on Target



Deadwood High School

Deadwood, South Dakota

STAFF LEADERS —  
 EDITOR . . . . . EDITH HOULETTE  
 ASSISTANT EDITORS  
 FAYE MARGOLIN & GENE SPINDLER  
 EDITORIAL CHAIRMAN . . . JACK MEE  
 ASSEMBLY MECH. . . . . ALBERT EILERS  
 BUSINESS CHAIRMAN —  
 SHELDON JACOBS  
 TYPISTS . . . ANITA TOPPILA  
 ART . . . . . PATTY HALL  
 PHOTOGRAPHY . . . LARRY KILTY  
 ADVISOR . . . . . MR. BRAINARD



# FLIGHT

1947-1948  
 We dedicate this  
 annual to the Freshman  
 class whose flight of  
 education has just begun.

# LOG

Date September 3, 1947  
 Time 9:00 a.m. to 3:30,  
 Weather (Conditions) - Bumpy  
 Visibility - low  
 (Vacation definitely over)  
 Flight instructions  
 received from P. Carroll  
 at 9:00 a.m.  
 Time of take-off  
 set for 9:20 -  
 destination determined  
 and date of  
 arrival set.

## Warm Up

Weather conditions the third of September, 1947, were a little murky for some, even if the sun was shining brightly. It was the first day of school. But that condition didn't last long, for we soon got into the swing of things—back into the familiar routine of classes, football and basketball games, parties,—and all the other things that offer excuses for not getting assignments done. We had in mind our destination, to graduate. So we crossed our fingers, hoped, and started in on our homework.



GROUND CREW: C. O. Gorder, Treasurer; Colburn Ruth, Member; G. A. Derosier, Member; Lola Kersten, Secretary; Francis J. Parker, President; William F. Grieb, Vice-President; H. S. Berger, Supt. of Schools; E. D. Vercellino, Member.

With their help we kept our plane air-worthy and running smoothly.



STEWARDESS  
Lola Kersten

PILOT H. S. Berger

CO-PILOT R. H. Krug

FLIGHT INSTRUCTORS



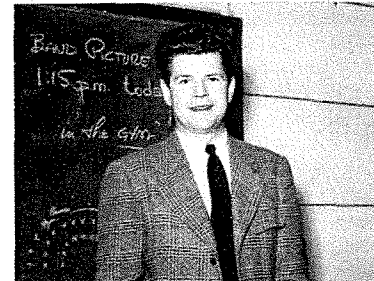
MORTON BOSS  
Science



MARY CRAIG  
Music



EDNA FERGUSON  
English, Library



STEWART FERGUSON  
Head Coach, Social Science



LUCIE JENSEN  
Mathematics



JEAN VAN HEUVELEN  
Homemaking

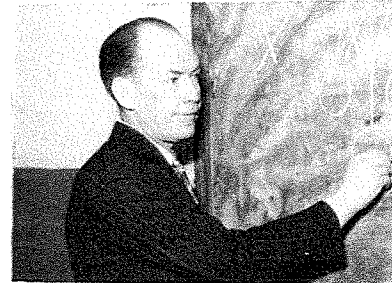
M. M. MINTON  
Physical Education  
Assistant Coach



FRANKLIN BRAINARD  
Social Science, English



ANN DUFFY  
Commerce



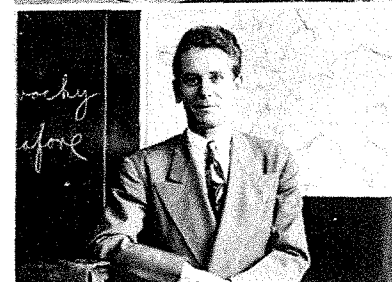
KENNETH GLEASON  
Band, Orchestra



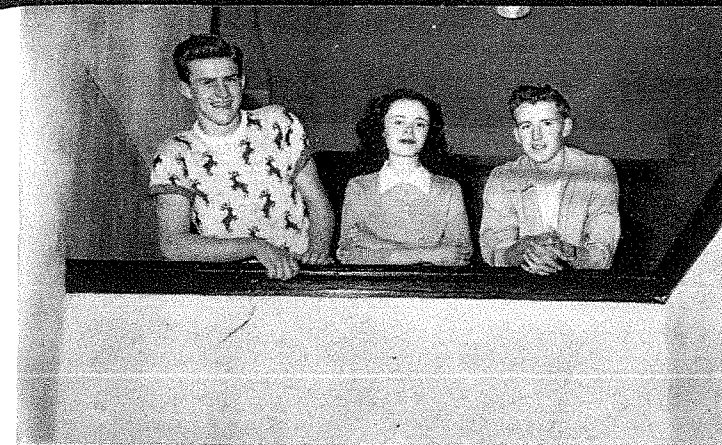
ORA HORSFALL  
Industrial Arts



ELSIE KRUG  
Physical Education



GORDON NELSON  
English, Latin



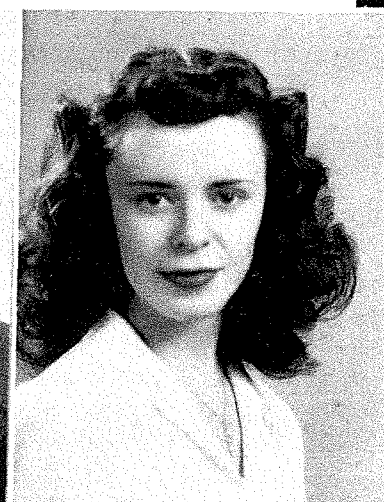
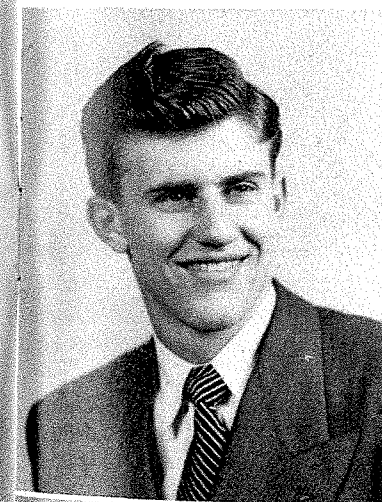
SENIOR FLIGHT OFFICERS: Albert Eilers, Vice-President;  
Gayle Fuller, Secretary-Treasurer; Robert Kelley, President.

PASSENGERS!

Webster's definition of "senior" certainly applies to us

Carl Beck

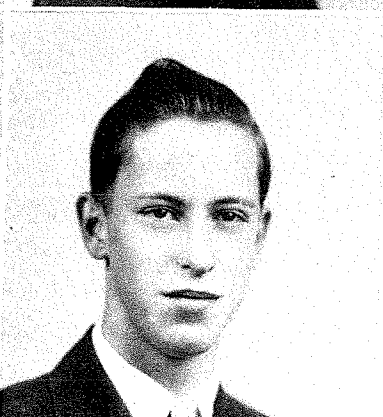
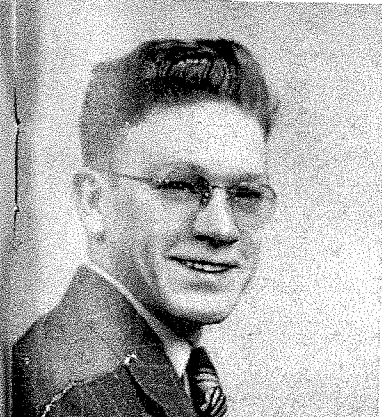
Kenneth Blair



Albert Eilers

Gayle Fuller

Patty Hall



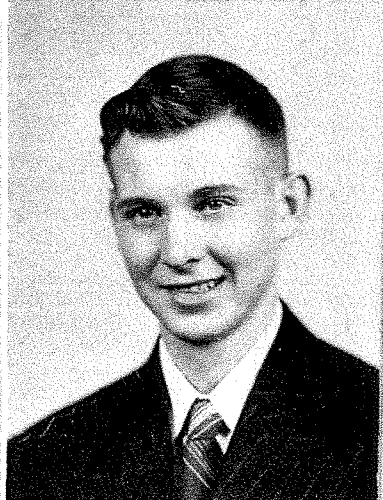
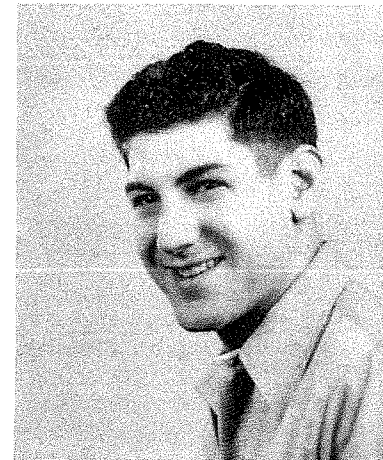
Robert Hatfield

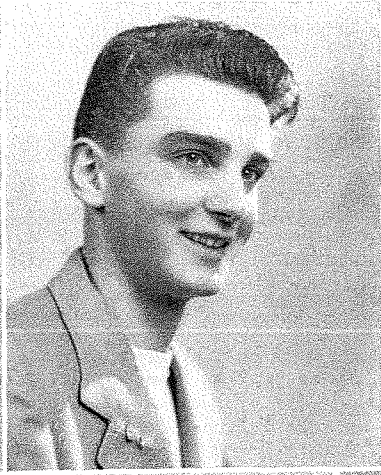
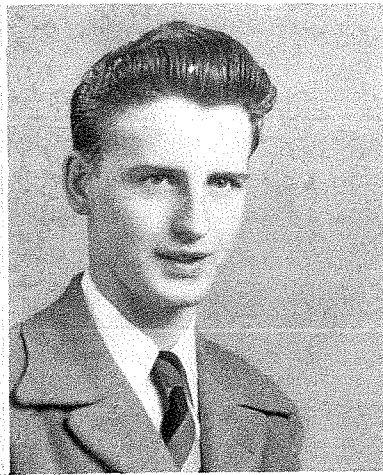
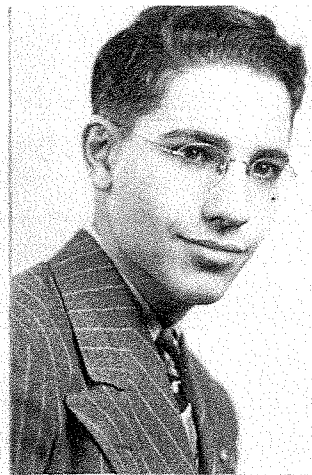
Edith Houlette

William Ikola

Seniors

George Acri





Seniors

Sheldon Jacobs

Robert Kelley

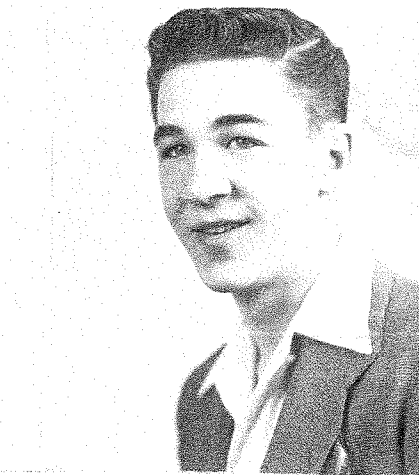
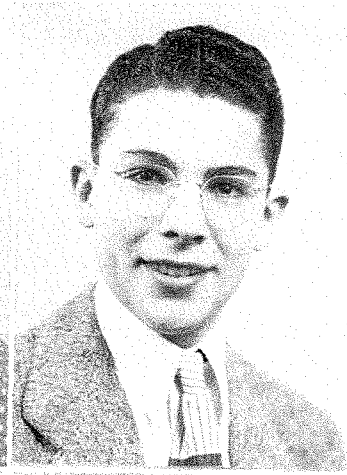
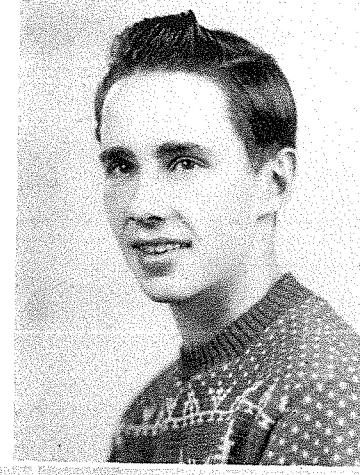
Larry Kilty

Seniors

Edward Rachtetto

Charles Rotter

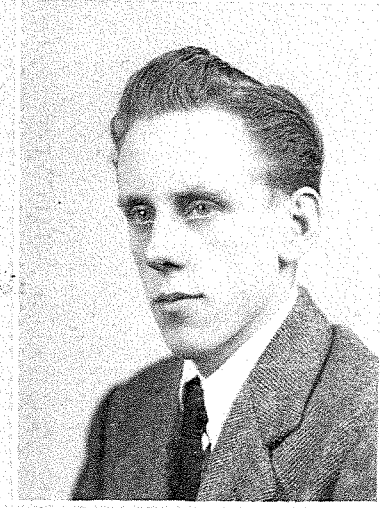
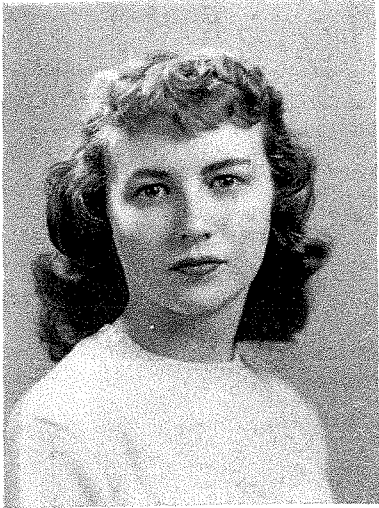
Roger Rotter



Peggy LeVeque

Dona Maltby

Faye Margolin



Theresa Ruether

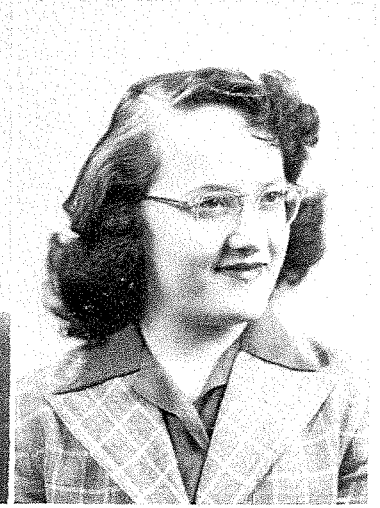
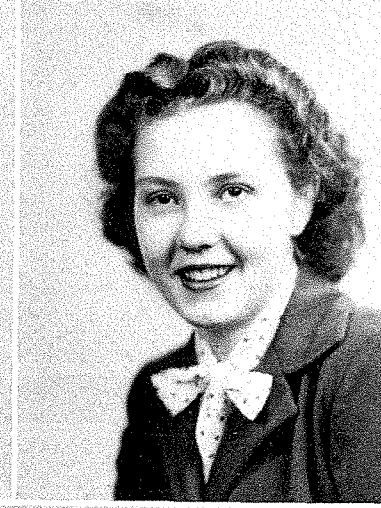
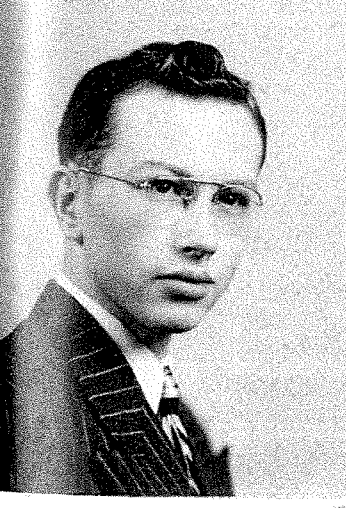
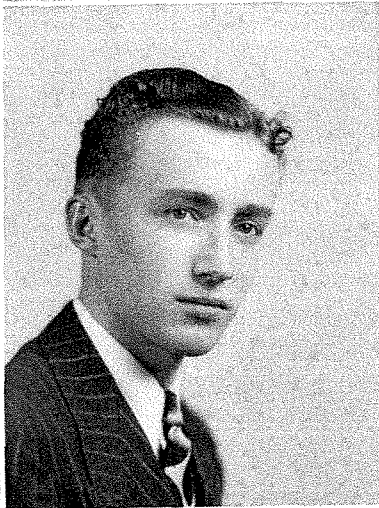
Patricia Sherman

Lyle Speer

Beverly McGlone

Jack Mee

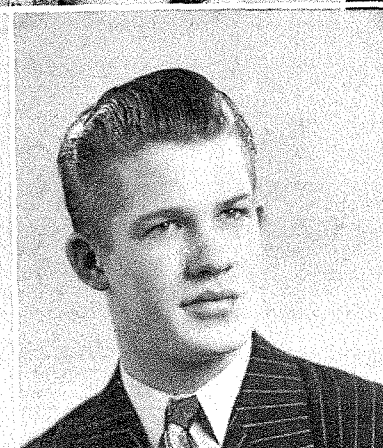
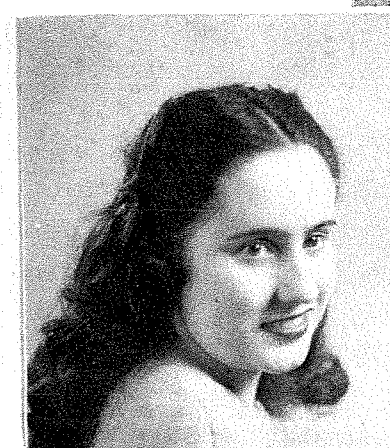
Rolland Meisch



Bill Spindler

Nadene Tetrault

Genevieve Thompson



Elna Newman

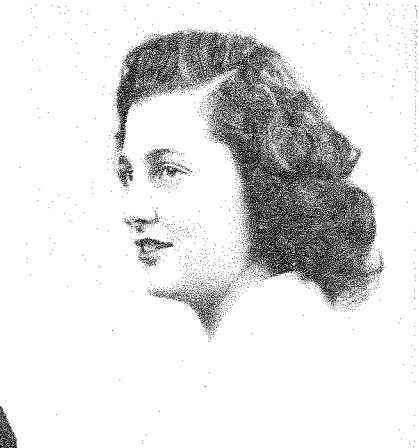
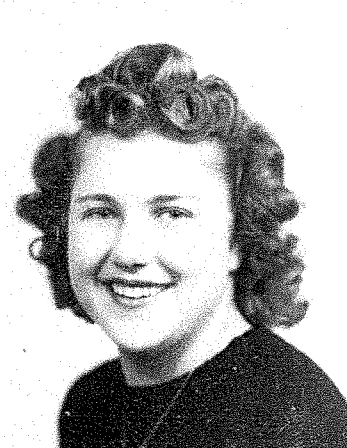
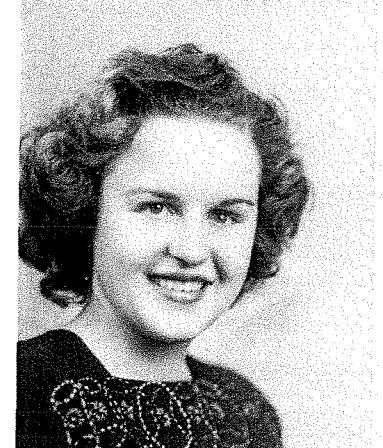
Fred North

Jane Muscha

Anita Toppila

Arlene Uken

Darleen Yeaman



# Senior Activities

GEORGE ACRI—"D" Club 2, 3, 4; Football 2, 3, 4.

CARL BECK—Boys Glee Club 4; Christmas Play 3, 4; "D" Club 2, 3, 4; Football 1, 2, 3, 4; Junior Play 3; Mixed Chorus 4.

KENNETH BLAIR—No Activities.

ALBERT EILERS—Annual Staff 2, 3, 4; Basketball 3, 4; Boys Glee Club 4; Bruin Staff 1, 2; Christmas Play 3; Mixed Chorus 3, 4; Student Council 3; Weight Teams 1, 2; Class Vice-President 4; Football 1, 2, 3, 4.

GAYLE FULLER—Annual Staff 3; Band 1, 2; Christmas Play 3, 4; Dramatic Club 2; G. A. A. 1; General Glee Club 2, 3, 4; Junior Play 3; Mixed Chorus 4; Special Glee Club 3, 4; Twirling 1; Class Secretary 4.

PATTY HALL—Annual Staff 2, 3, 4; Bruin Staff 2, 3, 4; Cheerleader 3, 4; Christmas Play 3; Class Secretary 3; Class Queen 3; G. A. A. 1; General Glee Club 1, 2, 3; Junior Play 3; Special Glee Club 1, 2, 3; Twirling 1, 4.

ROBERT HATFIELD—No Activities.

EDITH HOULETTE—Annual Staff 2, 3, 4; Assistant Ed. 3; Editor 4; Bruin Staff 1, 2, 3; Christmas Play 2, 3, 4; Cheerleader 2, 3; Class Secretary 2; Class Queen 1; Declamatory 1, 2; General Glee Club 1, 2, 3, 4; Mixed Chorus 1, 2, 3, 4; Junior Play 3; Special Glee Club 1, 2, 3, 4; G. A. A. 1, 2; All-School Attendant 4.

WILLIAM IKOLA—No Activities.

SHELDON JACOBS—Annual Staff 3, 4; Band 1, 2, 3, 4; Basketball Mgr. 2; Bruin Staff 1; Christmas Play 4; Football Mgr. 2; Boys Glee Club 4; Mixed Chorus 4; Track 3, 4; Weight Teams 1, 2, 3, 4; "D" Club 2, 3, 4.

ROBERT KELLEY—Bruin Staff 4; Christmas Play 3, 4; Dramatic Club 2; Mixed Chorus 2, 3, 4; Class President 4; Student Council President 4; Declamatory 2, 3; Boys Glee Club 4; Weight Teams 1, 2.

LARRY KILTY—Christmas Play 3, 4; Basketball 3, 4; Boys Glee Club 4; Football 1; Junior Play 3; Mixed Chorus 3, 4; Weight Teams 1, 2; "D" Club 3, 4.

PEGGY LeVEQUE—Annual Staff 3; Bruin Staff 2, 3; Assistant Ed. 2; Editor 3; Christmas Play 3; Declamatory 1, 2, 3, 4; Band 1, 2; Dramatic Club 1; G. A. A. 1, 2, 3; General Glee Club 1, 2, 3; Mixed Chorus 1, 2, 3; Special Glee Club 1, 2, 3.

DONA MALTBY—Entered 3rd year. Christmas Play 4; General Glee Club 4; Mixed Chorus 4; Special Glee Club 4.

FAYE MARGOLIN—Annual Staff 2, 3, 4; Assistant Editor 4; Bruin Staff 1, 2, 3; Class Secretary 1; Class Queen 2; Dramatic Club 1; Christmas Play 2, 3, 4; G. A. A. 1, 2; General Glee Club 1, 2, 3, 4; Mixed Chorus 1, 2, 3, 4; Special Glee Club 1, 2, 3, 4; Twirling 1; All-School Attendant 4.

BEVERLY McGLONE—Christmas Play 3, 4; General Glee Club 1, 2, 3; Mixed Chorus 2, 3; Special Glee Club 2, 3; G. A. A. 1.

JACK MEE—Entered 2nd year. Annual Staff 4; Basketball 3, 4; Christmas Play 3, 4; Class President 3; Boys Glee Club 4; Boys State 3; Declamatory 3; Mixed Chorus 3, 4; Football 3, 4; Weight Team 2; "D" Club 3, 4; Mixed Quartette 4.

ROLLAND MEISCH—Entered 3rd year. Christmas Play 4; Boys Glee Club 4; "D" Club 3, 4; Football 3, 4; Mixed Chorus 4.

JANE MUSCHA—Entered 2nd year.

ELNA NEWMAN—Christmas Play 3, 4; General Glee Club 2, 3, 4.

FRED NORTH—Basketball 1, 3, 4; Christmas Play 3, 4; Boys Glee Club 4; Class Officer 2, 3; Band 1; "D" Club 1, 2, 3, 4; Football 1, 2, 3, 4; Mixed Chorus 3, 4; Junior Play 3; Student Council 3; Weight Team 2.

VERA PORTER—Entered 2nd year.

EDWARD RACHETTO—No Activities.

CHARLES ROTTER—Basketball Mgr. 2; "D" Club 2, 3, 4; Boys Glee Club 4; Christmas Play 2, 4; Football Mgr. 2; Mixed Chorus 4; Weight Team 1, 2, 3, 4.

ROGER ROTTER—Basketball 3, 4; Class President 1; Christmas Play 3, 4; Boys Glee Club 4; "D" Club 2, 3, 4; Junior Play 3; Mixed Chorus 3, 4; Football 2, 3, 4; Weight Team 1, 2.

THERESA RUETHER—Bruin Staff 2, 3, 4; Editor 4; Christmas Play 3, 4; G. A. A. 1, 2, 3, 4; General Glee Club 1, 2, 3, 4; Mixed Chorus 1, 2, 3, 4; Special Glee Club 1, 2, 3, 4.

ROBERT SCHUNNEMAN—Annual Staff 3; Boys Glee Club 4; Christmas Play 4; Debate 4; Mixed Chorus 4.

PATRICIA SHERMAN—G. A. A. 1, 2, 3, 4; General Glee Club 1.

LYLE SPEER—Entered 2nd year.

BILL SPINDLER—Band 1, 2, 3, 4; Basketball Mgr. 1; "D" Club 1, 2, 3, 4; Football Mgr. 1; Basketball 4; Weight Team 1, 2, 3.

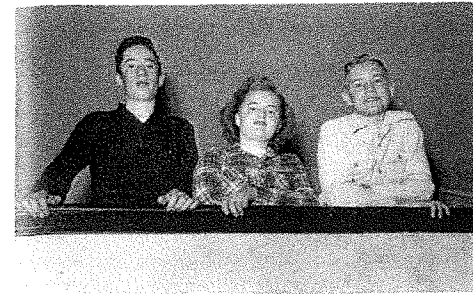
NADENE TETRAULT—Christmas Play 3; G. A. A. 1; General Glee Club 1, 2, 3; Junior Play 3; Mixed Chorus 2, 3; Special Glee Club 2, 3.

GENEVIEVE THOMPSON—Bruin Staff 1, 2, 3, 4; Band 1, 2, 3, 4; Annual Staff 4; G. A. A. 1, 2, 3.

ANITA TOPPILA—Annual Staff 4; Bruin Staff 1, 2, 3, 4; General Glee Club 1, 2, 3, 4; G. A. A. 1, 2, 3; Junior Play 3; Christmas Play 3, 4; Mixed Chorus 4; Special Glee Club 1, 2, 3, 4; Twirling 1.

ARLENE UKEN—Annual Staff 3; Bruin Staff 1, 2, 3; Band 1, 2, 3, 4; Debate 4; Dramatic Club 1; General Glee Club 1, 2, 3, 4; Declamatory 1, 2, 3, 4; Christmas Play 3, 4; Junior Play 3; Mixed Chorus 2, 3, 4; Twirling 1.

DARLEEN YEAMAN—Bruin 4; Girls State 3; Student Council 4.



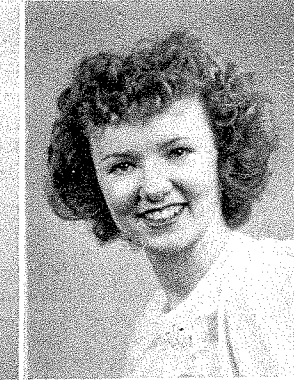
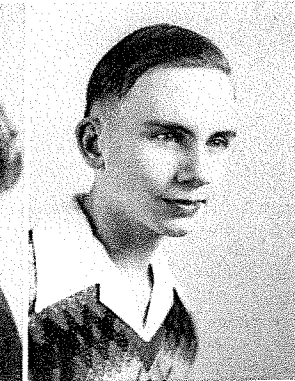
JUNIOR FLIGHT OFFICERS:—  
Alfred Newman, Vice President; Doris Sorensen, Secretary - Treasurer; Dean Dybing, President.

BALLAST: In case of trouble—we bail out!

Joyce Acri  
Dean Dybing  
Vincent Green  
JoAnn Joslin

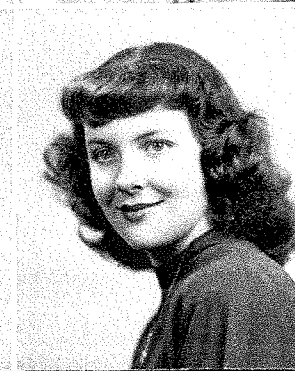
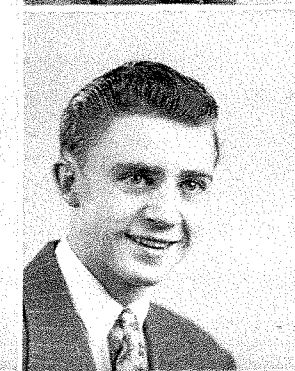
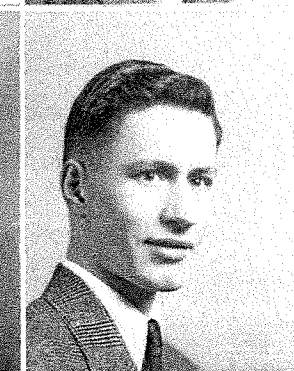
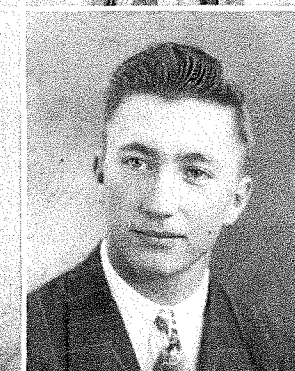
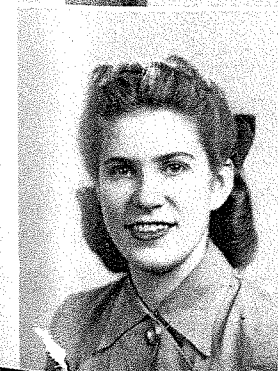
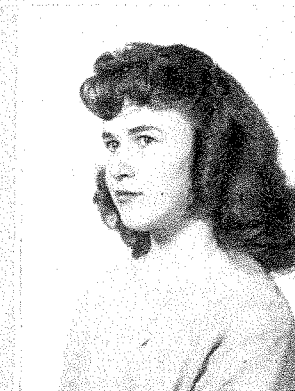
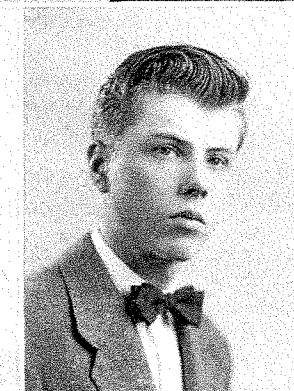
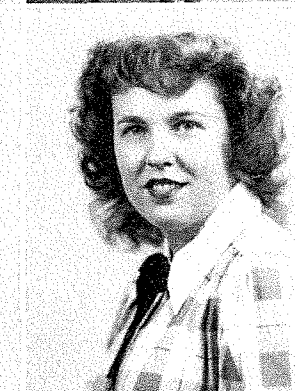
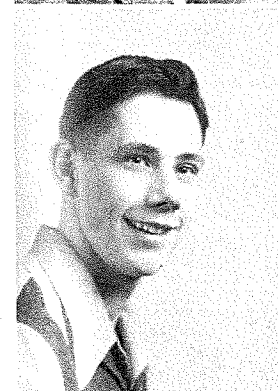
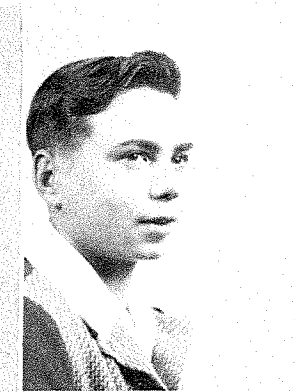
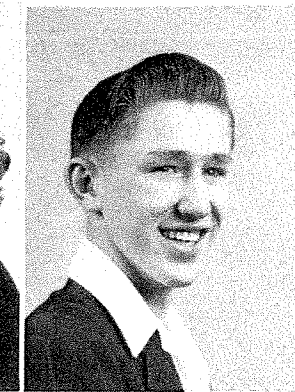
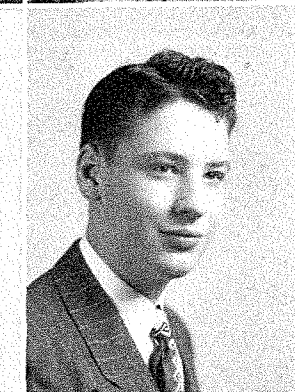
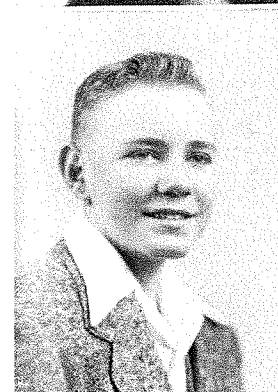
Jimmie Berger  
Douglas Edwards  
Betty Jo Hadden  
Robert Jurisch

Dorothy Doscher  
Celestine Engler  
Kenneth Hendrickson  
Howard Mason



Maurice Etem  
Gene Hennen  
Jimmie Merritt

Leonard Fahrni  
Donna Hoseman  
Norma Ondriezek



# Juniors

Bonnie Pendo  
Gretchen Robertson  
Doris Sorensen  
Irene Stephens

Robert Pouriea  
Jean Rosser  
Melvin Sorensen  
Dale Stoneberger

Stanley Reed  
Roberta Rotter  
Dixie Stalcup  
Bonnie Strickland

Carole Ripley  
June Sargent  
Luella Stalcup  
Gaylin Thompson

Betty Roberts  
John Schunneman  
Bonnie Starr  
Joyce Veitl



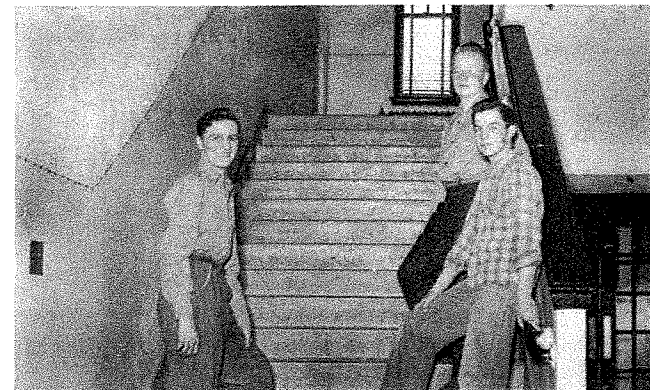
Not Pictured—Edward Becker, Merlyn Butler, Eugene Farnsworth, Alice Franzel, Douglas Hudson, John Hunter, Genevieve Jacobson, Richard Jacobson, Alfred Newman, Norman Oestreich, Opal Schuster, and Richard Weig.



FLIGHT CREW: Patty Trucano, Helen Miller, Darleen Yeaman, Eugene Farnsworth, Dick Weig, Patty Hillery, Mr. Krug, and Robert Kelley. Not pictured: Verda Kennedy.

The Student Council was very active this year, and the notice on the bulletin board reading "Student Council meeting in library third period" was a familiar one.

## Cargo



FRESHMEN FLIGHT OFFICERS: Ronald Mertz, Vice-President; Mary Ann Redl, Secretary-Treasurer; Bill Reed, President.

EXCESS BAGGAGE . . . Fragile, handle with care.

## Excess Baggage

SOPHOMORES FLIGHT OFFICERS: John Trucano, President; Gene Spindler, Secretary-Treasurer; Alvin Oestreich, Vice-President.

CARGO . . . "Whew, what a ride!"





SOPHOMORE CLASS: First row—Carol Walker, Betty Overland, Peggy Drake, Norma Page, Jacqueline Myers, Evelyn Adams, Ila McCoy. Second row—Larry Heil, Kent Ripley, Gene Spindler, Bill Redl, Kay Smiley, Alvin Oestreich, Robert Kersten, Mrs. Krug. Third row—Warner Berry, Bill Fish, Albert Lee, Thomas Taylor, John Trucano, Cecil Stoner. (Not pictured): Donald Derosier, Ethel Houlette, Norma Newman, Beverly Titus.

Sophomores

Freshmen

FRESHMAN CLASS: First row—Twila Sherman, Patty Hillery, Betty Collins, Mary Ann Redl, Patty Trucano, Mary DeHaven, Norma Hansen, Irene Closson, Marlene Peyton. Second row—John Maresh, Bill Reed, Jerry Flynn, Lois Kettlehut, Ronald Mertz, Charles Leslie, Leroy Johnston, Mr. Horsfall. Third row—James Hardy, Wayne Hinchin, Dennis Dyvig, Charles Davis, James Jones, David Liston, Russell Stanley.



SOPHOMORE CLASS: First row—Daryl Heil, Kenneth Weepie, Jerry Young, Donald Koehler, Duane Lubisher, Bill Anderson, John Tveidt. Second row—Mr. Minton, Helen Miller, Jeanette Shostrom, Jeanette Hurst, Mary Doscher, Arlene Kettlehut, Betty Dilley, Verda Kennedy. Third row—Harry Wait, George Lubker, Patty Lavier, Lloyd Kemp, Robert Sloss.

Sophomores

Freshmen

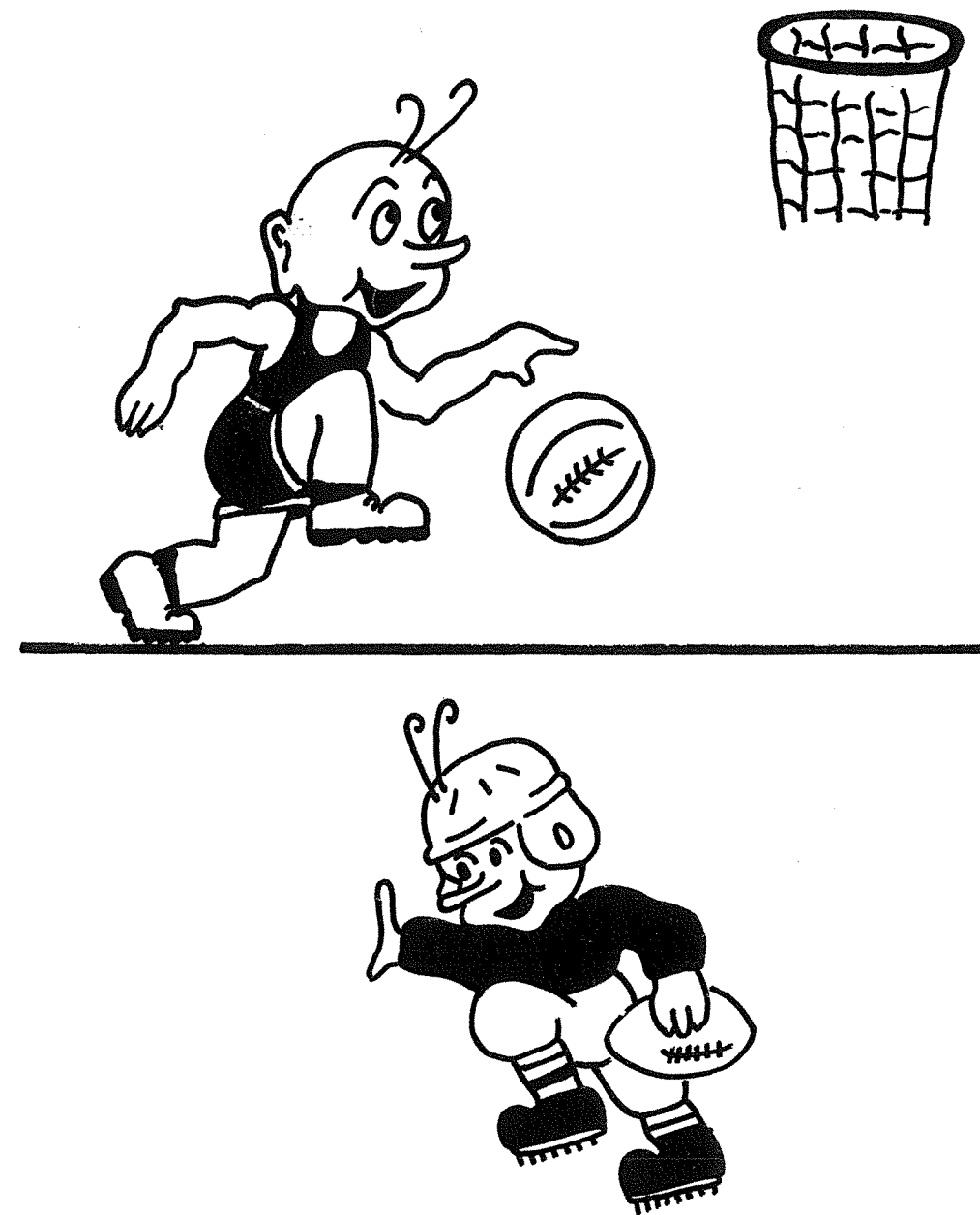
FRESHMAN CLASS: First row—Neil Kelley, Verelyn Rice, Raymond Hansen, Kenneth Nelson, Alfred Lee, Melvin Farnsworth, Doran Jacobs, Robert Yeaman, Verne Hennen. Second row—Mr. Boss, Edwina Schopen, Marilyn Berger, Anita Grieb, Marlene Mack, Verna Franzel, Marilyn Thacker, Claudette Zaiser. Third row—Doris Jacobson, Howard Dinnell, Frances Beringer, Carol Gorder. (Not pictured): Robert Hanson.





## Combat Duty

Football and basketball play a large part in the school year of the DHS student, and our FLIGHT LOG would not be complete without mentioning the year's sports events. Football fans got a thrill this year watching the BEARS march through mud, rain, and snow to give the spectators a taste of real passing, catching, and all around good playing ability. "Spectacular" is an adjective often used to describe the unpredictable BEARS. This year's basketball season saw the addition of several more games on the schedule. In their regular conference schedule the BEARS broke even, winning seven and losing seven of the games. Again the BEARS proved unpredictable, and added their share to the scrambled Black Hills conference.





"D"  
C  
L  
U  
B

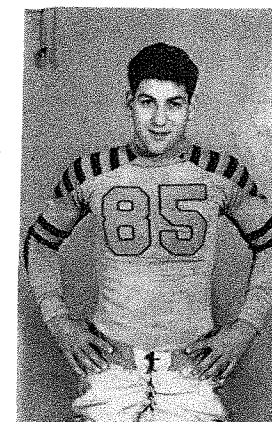
"D" CLUB First row—Daryl Heil, Rolland Meisch, John Schunneman, Cecil Stoner, Norman Oestreich, Bill Spindler, Sheldon Jacobs, Alfred Newman, John Tveidt. Second row—Coach Ferguson, Howard Mason, Dennis Dyvig, Charles Rotter, Carl Beck, Fred North, Robert Jurisch, Gene Farnsworth, Jim Merritt, Coach Minton. Third row—Maurice Etem, Edward Becker, Roger Rotter, Jack Mee, Larry Kilty, Dick Weig, Albert Eilers, Dale Stoneberger, George Acri.

Long famous for its initiations, the "D" Club this year let its new members off with only a short word of warning. "Remember, you're in "D" Club now!"

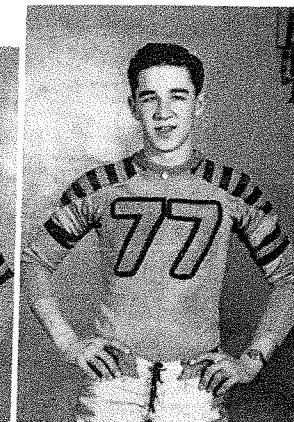
G. A. A. activities this year included volleyball and basketball with out-of-town teams, and interclass tournaments in both games.

GAA: First row—Marlene Peyton, Patricia Sherman, Patty Hillery, Mary Ann Redl, Patty Trucano, Anita Toppila, Kay Smiley, Donna Hoseman, Genevieve Thompson, Carol Walker. Second row—Alice Franzel, Betty Roberts, Verda Kennedy, Betty Diley, Marlene Mack, Marilyn Berger, Anita Grieb, Helen Miller, Dixie Stalcup, Bonnie Pendo, Mrs. Krug. Third row—Carol Gorder, Mary Doscher, Peggy LeVeque, Beverly Titus, Arlene Uken, Theresa Ruether, Jean Rosser, Patty Lavier, Irene Stephens, Jeanette Shostrom

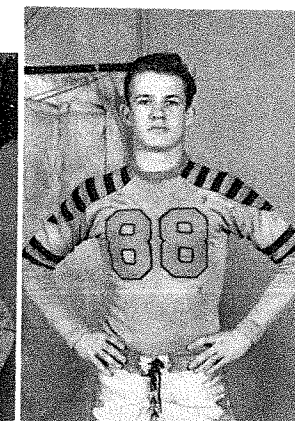
G.  
A.  
A.



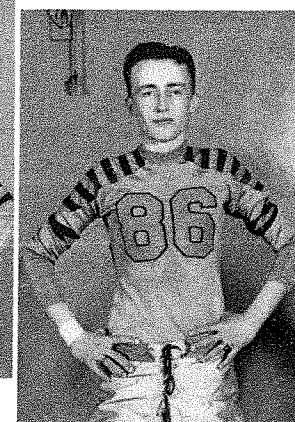
G. Acri  
Tackle DDD



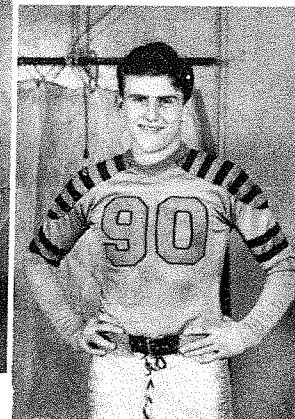
R. Rotter  
Back DDD



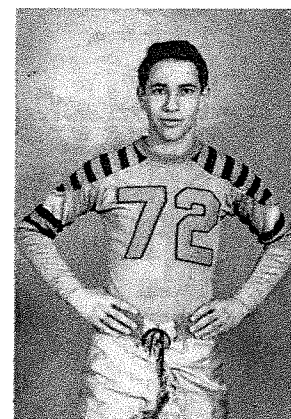
F. North  
Back DDDD



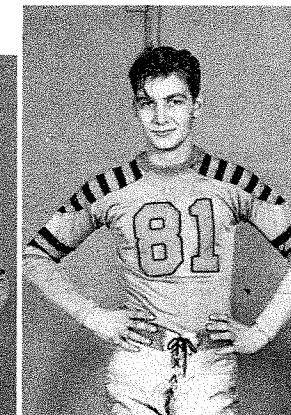
J. Mee  
Back DD



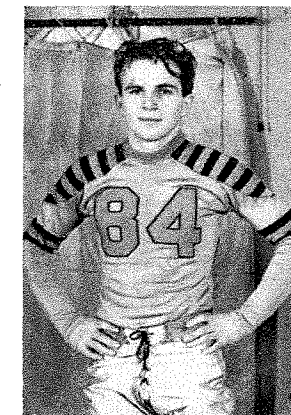
A. Eilers  
End DDD



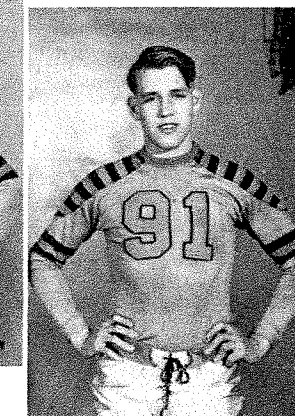
S. Jacobs  
End



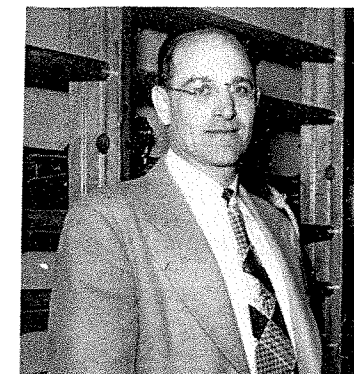
C. Beck  
Guard DDD



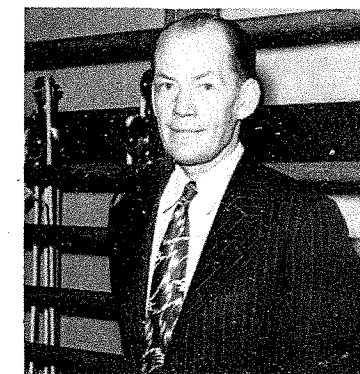
R. Meisch  
Center DD



R. Weig  
Tackle DD



M. M. MINTON  
Assistant Coach



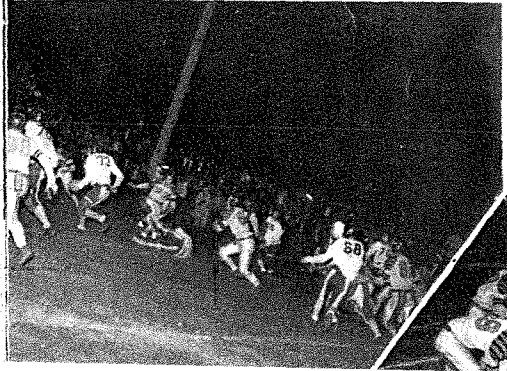
STEWART FERGUSON  
Head Coach

Senior Gridsters



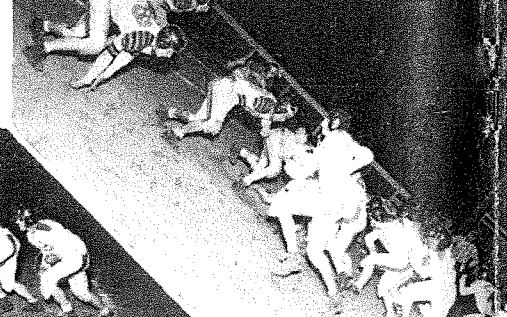
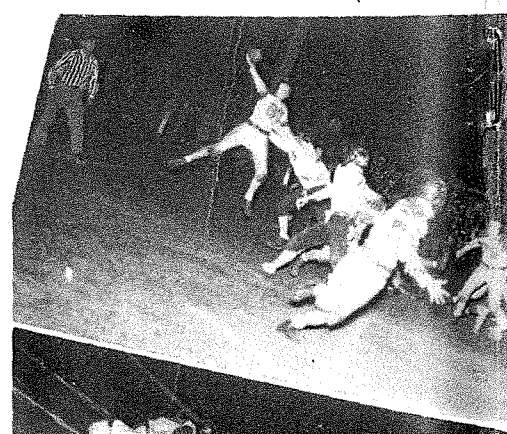
**FOOTBALL SQUAD:** First row—John Tveidt, Mgr.; Alfred Newman, Rolland Meisch, Norman Oestreich, John Schunneman, Howard Mason, Cecil Stoner, Gene Farnsworth, John Trucano, Alvin Oestreich, Bob Yeaman, Mgr. Second row—Coach Minton, Harry Wait, Melvin Sorensen, Fred North, Carl Beck, Robert Jurisch, Dennis Dyvig, Wayne Hinchin, Sheldon Jacobs, Coach Ferguson. Third row—Maurice Etem, George Lubker, Albert Eilers, Roger Rotter, Jack Mee, Douglas Edwards, Dale Stoneberger, Dick Weig, Pete Becker, Thomas Taylor, George Acri.

The "flashy" Bears. The new uniforms had a lot of eye-appeal.

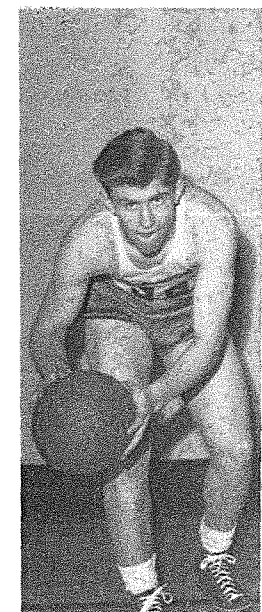


**FOOTBALL SCHEDULE**

Opponent	We	They
Sept. 19 Custer	13	18
Sept. 26 Spearfish	33	12
Oct. 3 Rapid City	7	37
Oct. 10 Sturgis	13	34
Oct. 17 Belle Fourche	0	32
Oct. 24 Lead	18	7



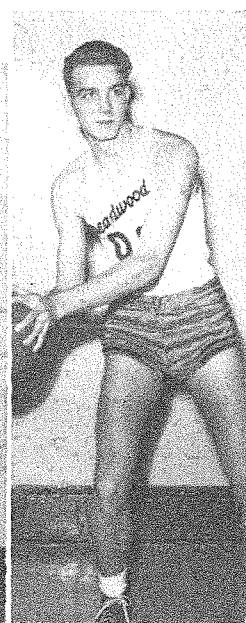
A. Eilers  
Forward DD  
N. Oestreich  
Forward D



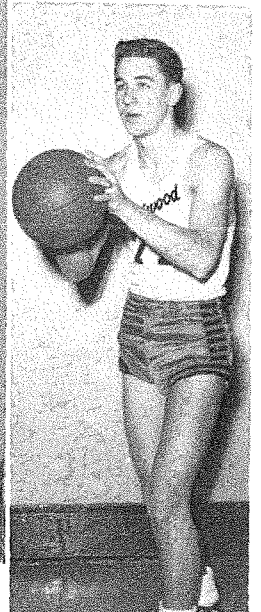
J. Mee  
Guard DD



F. North  
Guard DDD



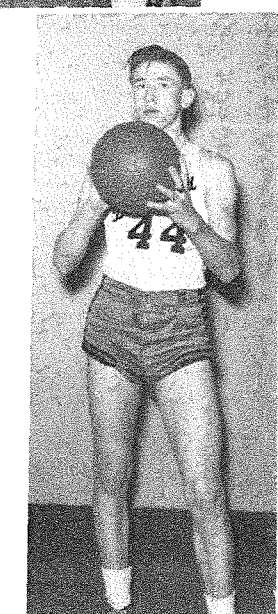
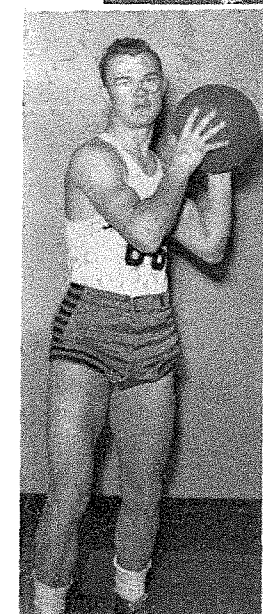
R. Rotter  
Forward DD  
M. Etem  
Forward D



C. Stoner  
Forward DD

L. Kilty  
Center DD

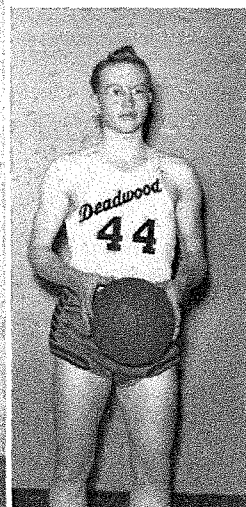
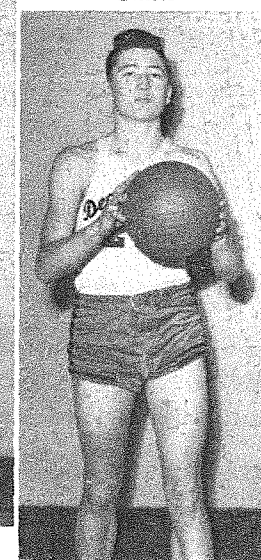
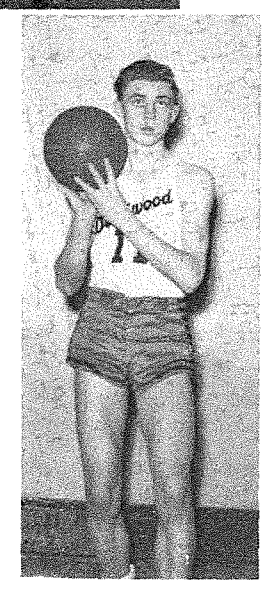
E. Becker  
Forward D



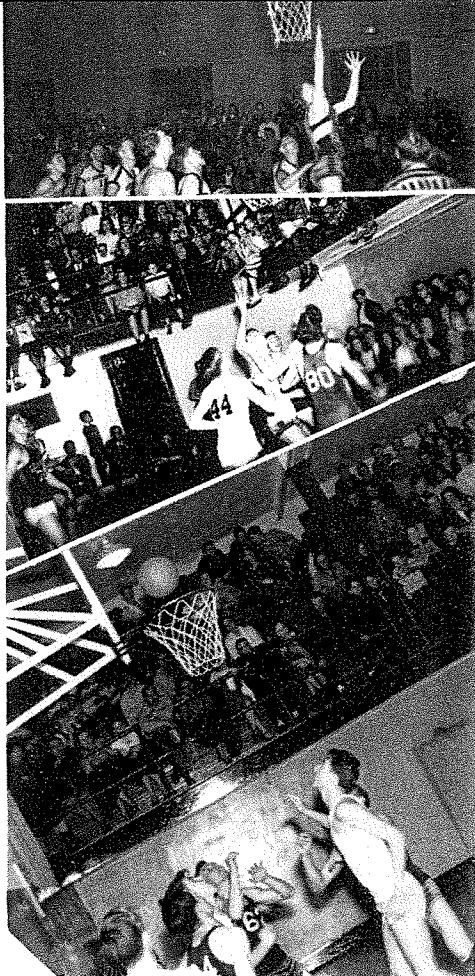
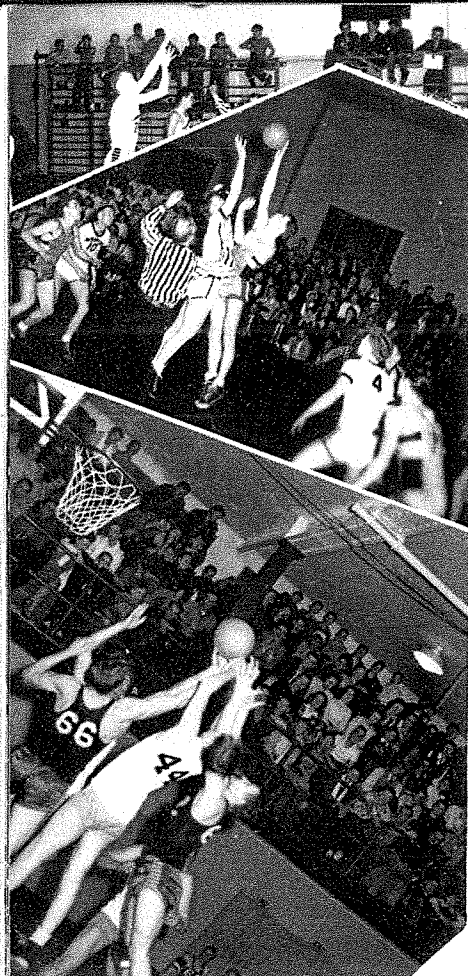
D. Stoneberger  
Center

D. Dyvig  
Guard D

W. Spindler  
Forward



J. Hunter



**BASKETBALL SCHEDULE**

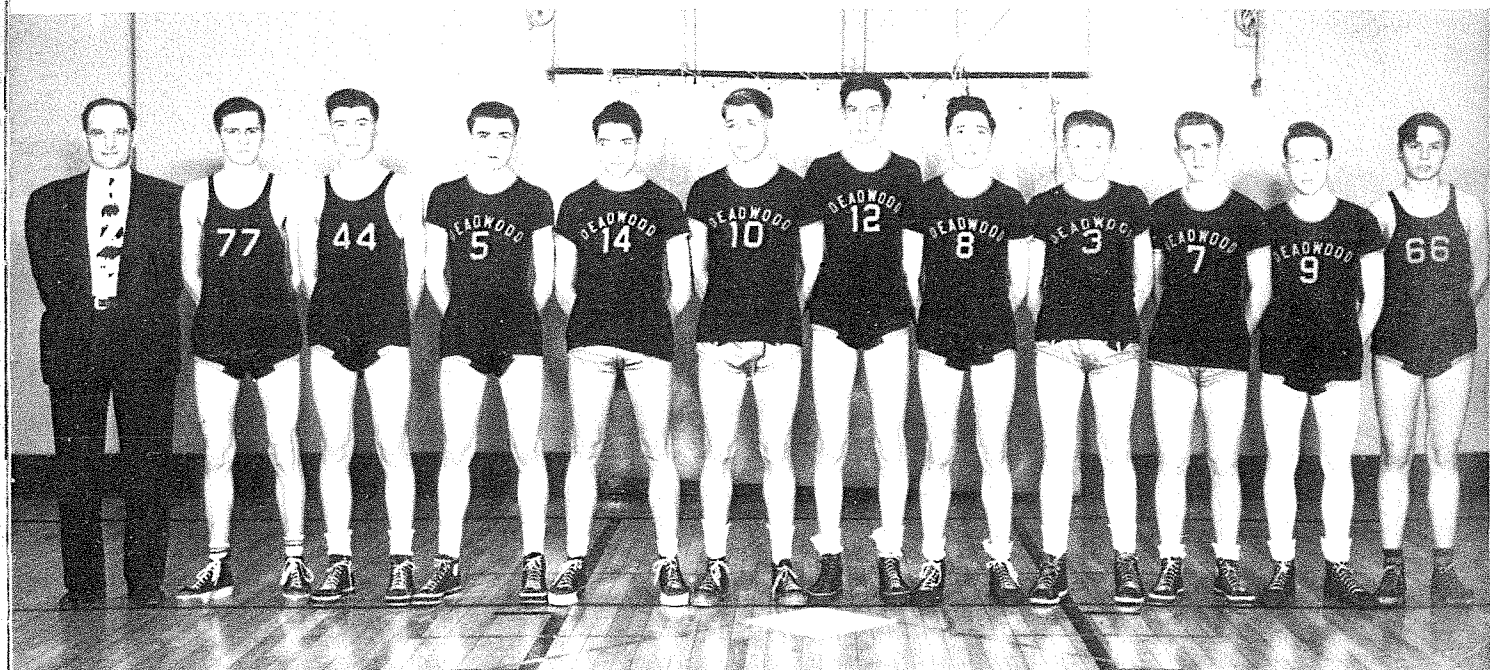
	Opponent	We	They
Dec. 2	Wall	28	17
Dec. 9	Spearfish	20	36
Dec. 12	Custer	36	22
Dec. 18	Sturgis	20	43
Dec. 19	Rapid City	26	39
Jan. 9	Rapid City	29	26
Jan. 13	Belle Fourche	35	52
Jan. 15	Custer	42	24
Jan. 16	Hot Springs	36	28
Jan. 20	Rapid City	31	40
Jan. 23	Lead	25	38
Jan. 27	Sturgis	27	47
Jan. 30	Belle Fourche	34	33
Feb. 3	Sturgis	29	33
Feb. 6	Lead	26	38
Feb. 12	Hot Springs	49	47
Feb. 17	Spearfish	38	37

**District 32 Tournament**

	Opponent	We	They
Feb. 27	Nisland	49	25
Feb. 28	Spearfish	22	38
Feb. 28	Piedmont	40	27

Next year's stars gave the fans a thrill, too. Not only the "A" team has hot-shots!

"B" TEAM: Coach Minton, John Trucano, John Hunter, Jim Merritt, Charles Rotter, Richard Weig, George Lubker, Dale Stoneberger, Dennis Dyvig, Cecil Stoner, Bill Spindler, Leonard Fahrni.

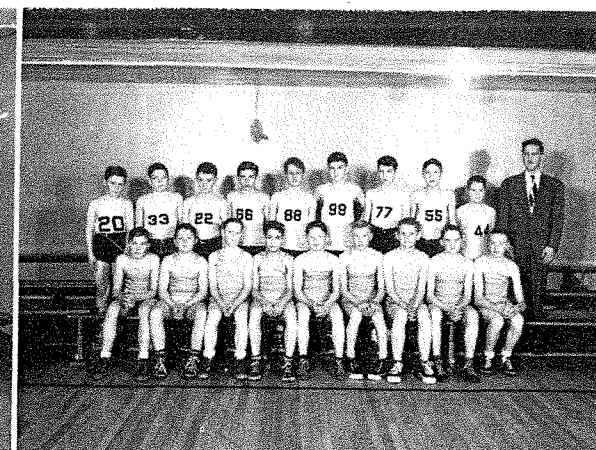


85-lb. TEAM: First row—Bernard, Jones, Bannigan, Yeaman, Houlette, Palmer, Toppila, Hardin. Second row—Caulkins, H. Newman, R. Newman, Craig, Smiley, Kline, Hobbs, Coach Furois.

HEAVYWEIGHT TEAM: First row—Hinchen, Burtzlaff, Lee, Berry, Oestreich, Baggaley, Heil, Sorensen, Lee. Second row—Jurisch, Redl, Trucano, Weig, Edwards, Rotter, Fahrni, Jacobs, Coach Minton.

100-lb. TEAM: First row—Hudson, Anderson, Hennen, Jacobs, Jones, Nelson, Weepie, Kelley, Johnston. Second row—Ondrizek, Overland, Hoslo, Meverdon, Dunwiddie, Morris, Graham, Fox, Berry, Coach Furois.

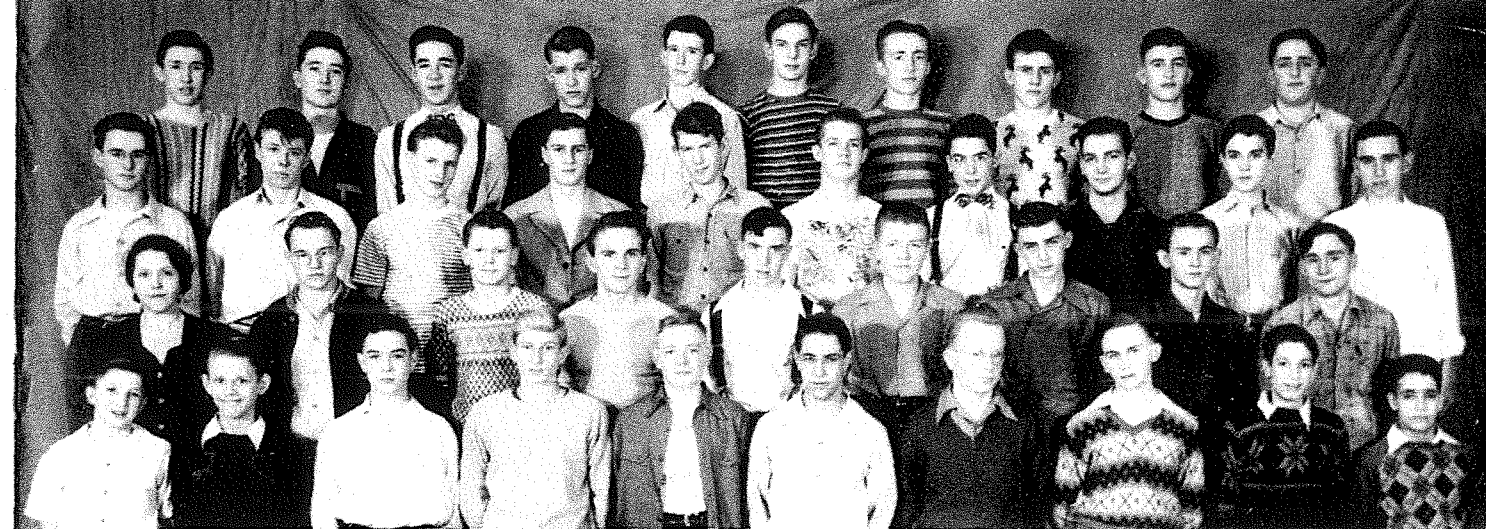
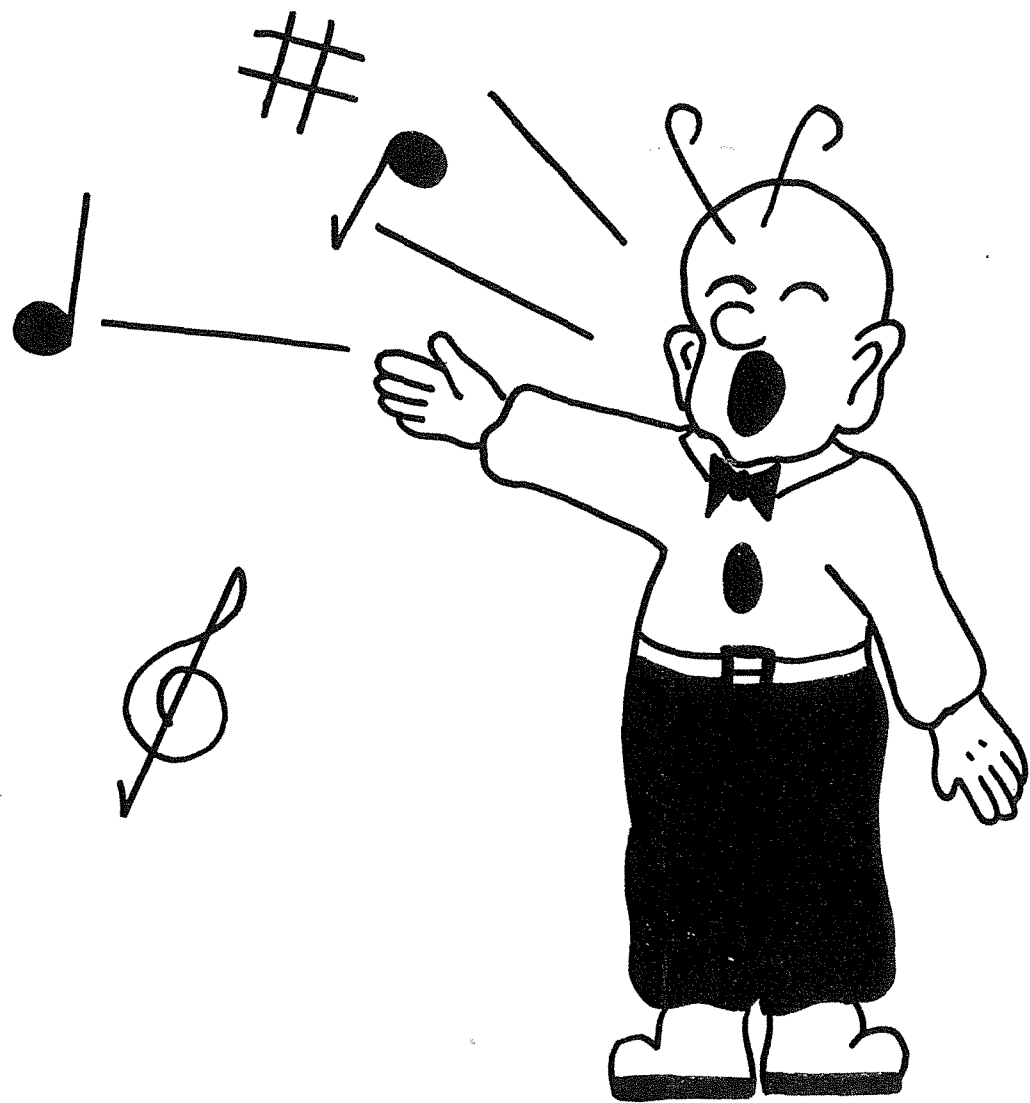
115-lb. TEAM: First row—Coach Minton, Heil, Ripley, Hennen, Koehler, Hudson, Reed, Mertz, Newman. Second row—Barton, Anderson, Lubisher, Jones, Flynn, Stanley, Young, Craig, Tetrault.



Cheer Leaders  
Mary Ann Redl, Merlyn Butler  
Patty Hall, Donna Hoseman

# Off Hours

That eight o'clock dash to glee club or band, and remember how long it took you to really wake up? . . . Rehearsal for the junior play often brought on hilarious laughter, sometimes for no apparent reason. . . . "You mean I'M an angel in the Christmas play?" . . . The vigorous attempt at being dramatic for Miss Craig. . . . And through it all, we entertained others, and ourselves.



**BOYS GLEE CLUB:** First row—Daryl Heil, Kenneth Weepie, Charles Leslie, Merlyn Butler, Dean Dybing, Sheldon Jacobs, Gene Spindler, James Berger, Jerry Young, Doran Jacobs. Second row—Miss Craig, Larry Heil, Kent Ripley, Rolland Meisch, Bill Redl, Dennis Dyvig, Jim Merritt, Robert Kersten, Robert Schunneman. Third row—Harry Wait, Kenneth Hendrickson, Robert Kelley, John Trucano, Richard Jacobson, Fred North, Charles Rotter, Carl Beck, Warner Berry, John Schunneman. Fourth row—Maurice Etem, Dale Stoneberger, Roger Rotter, Dick Weig, Albert Lee, George Lubker, Jack Mee, Albert Eilers, John Hunter, Thomas Taylor.

## ACAPPELLA CHOIR

Doris Sorensen  
Donna Hoseman  
Mary Ann Redl  
Edwina Schopen  
Kay Smiley  
Patty Hillery  
Marlene Peyton  
Miss Craig  
Bonnie Pendo



Anita Grieb  
Carol Gorder  
Betty Roberts  
Jeanenne Hurst  
Marilyn Berger  
Theresa Ruether  
Gretchen Robertson  
Patty Lavier  
Helen Miller

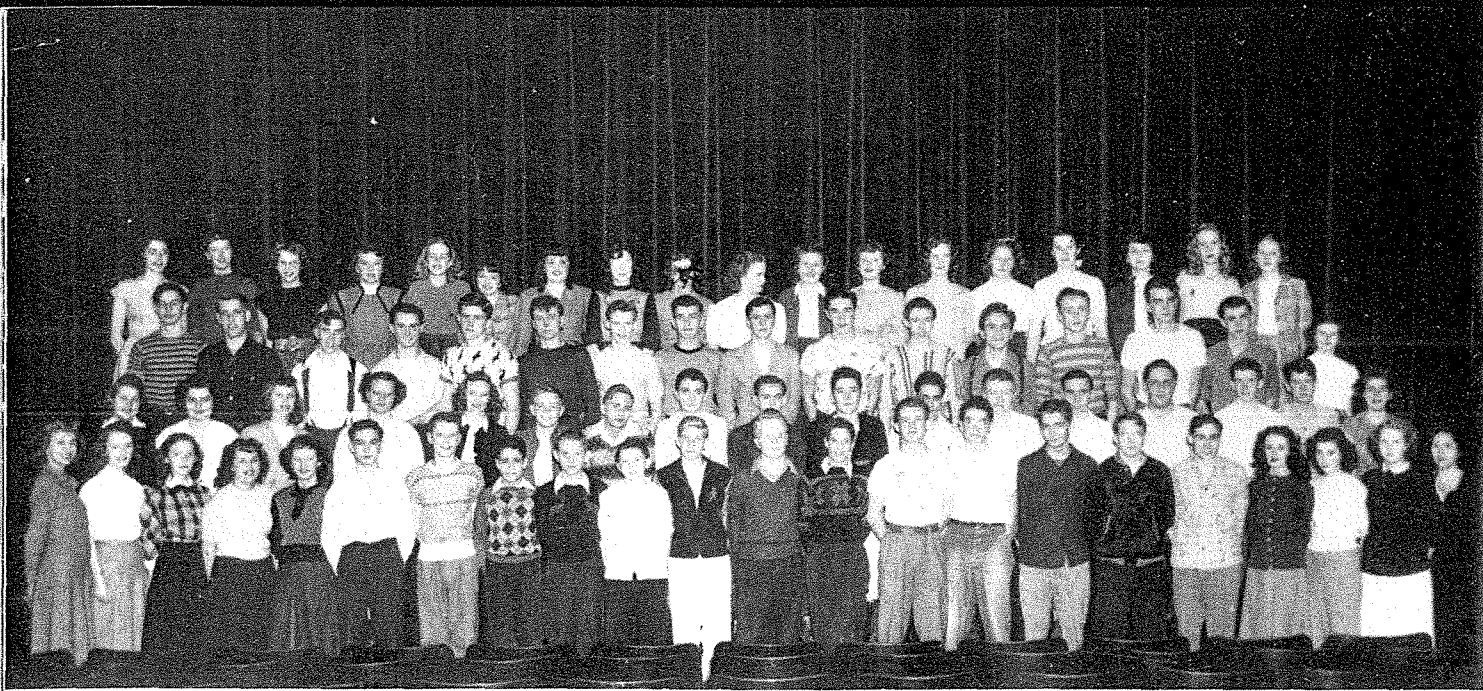
**GIRLS QUARTET:** Patty Lavier, Ethel Houlette, Dorothy Doscher, Mary Doscher.



**DUET:** Patty Lavier, Ethel Houlette.



**MIXED QUARTET:** Jack Mee, Patty Lavier, Ethel Houlette, Larry Kilty.



**MIXED CHORUS:** Front row—Carole Ripley, Arlene Kettlehut, Kay Smiley, Betty Jo Hadden, Bonnie Starr, Charles Leslie, Kent Ripley, Doran Jacobs, Kenneth Weepie, Daryl Heil, Merlyn Butler, Gene Spindler, Jerry Young, Fred North, Charles Rotter, Carl Beck, Larry Heil, Robert Schunneman, Gayle Fuller, Faye Margolin, Bonnie Pendo, Miss Craig. Second row—Arlene Uken, Celestine Engler, Helen Miller, Betty Roberts, Jeanette Shostrom, Dean Dybing, James Berger, Warner Berry, Robert Kersten, Dale Stoneberger, Sheldon Jacobs, Dennis Dyvig, John Schunneman, Thomas Taylor, Albert Lee, Richard Jacobson, Jo Ann Joslin. Third row—George Lubker, Dick Weig, Bill Redl, Harry Wait, Albert Eilers, Kenneth Hendrickson, Bob Kelley, John Hunter, John Trucano, Roger Rotter, Maurice Etem, Rolland Meisch, Jack Mee, Larry Kilty, Jim Merritt, Carol Walker. Fourth row—Roberta Rotter, Patty Lavier, Verda Kennedy, Mary Ann Redl, Marilyn Berger, Marlene Peyton, Patty Trucano, Patty Hillery, Dona Maltby, Doris Sorensen, Anita Toppila, Norma Ondriezek, Edith Houlette, Anita Grieb, Mary Doscher, Ethel Houlette, Gretchen Robertson, Carol Gorder.

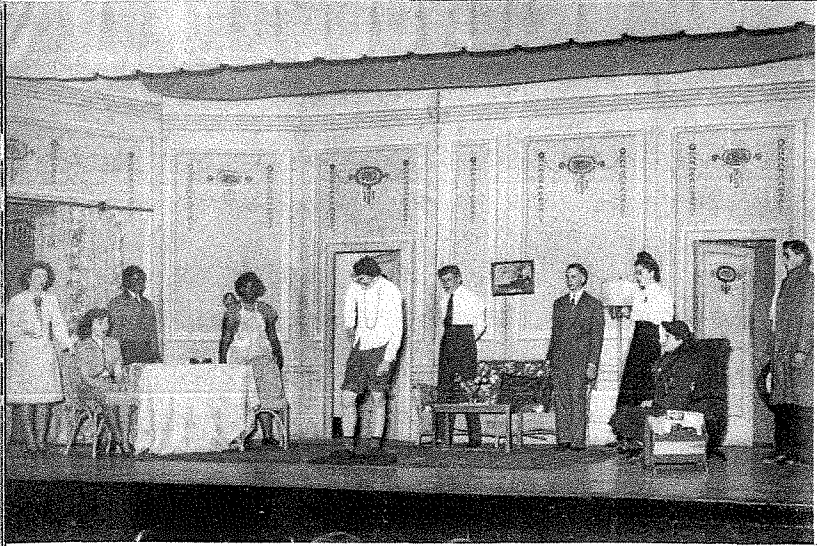
**SPECIAL GLEE CLUB:** First row—Marlene Peyton, Patty Hillery, Kay Smiley, Faye Margolin, Patty Trucano, Gayle Fuller, Donna Hoseman, Betty Jo Hadden, Dona Maltby, Doris Sorensen. Second row—Miss Craig, Mary Ann Redl, Jacqueline Myers, Anita Toppila, Norma Ondriezek, Marilyn Berger, Jo Ann Joslin, Bonnie Starr, Edwina Schopen, Helen Miller. Third row—Bonnie Pendo, Carol Gorder, Verda Kennedy, Betty Roberts, Jeanette Shostrom, Arlene Kettlehut, Dorothy Doscher, Anita Grieb, Jeanette Hurst. Fourth row—Edith Houlette, Mary Doscher, Carole Ripley, Roberta Rotter, Theresa Ruether, Gretchen Robertson, Patty Lavier, Joyce Veitl, Arlene Uken, Celestine Engler.



**BAND:** First row—Sheldon Jacobs, Dean Dybing, Georgia Palmer, Irene Closson, Gene Hennén, Doris Jacobson, Genevieve Jacobson, Jimmy Merritt, Paul Snyder, Doran Jacobs. Second row—Dennis Dyvig, Evelyn Adams, Patty Hillery, Gaylin Thompson, Charles Leslie, Wayne Hinchin, Lois Kettlehut, Dale Stoner, Joe DiSanto, Harry Wait, Morris Toppila, Arlene Kettlehut, Mary Pittenger, Catherine Wagner. Third row—Joan McGin, Betty Kettlehut, Bonnie Roebuck, Mr. Gleason, Genevieve Thompson, Arlene Uken, Verne Hennen, Robert Jurisch, Dorothy Doscher, Patty Hall, Carole Ripley, Joyce Veitl, Donna Hoseman, Kenny Hendrickson, Bill Spindler, Kent Ripley, Marilyn Berger.



**GENERAL GLEE CLUB:** First row—Miss Craig, June Sargent, Marlene Peyton, Doris Sorensen, Patty Hillery, Carol Walker, Joyce Acri, Dona Maltby, Betty Jo Hadden, Kay Smiley, Faye Margolin, Irene Closson, Lois Kettlehut, Mary DeHaven, Patty Trucano, Edwina Schopen. Second row—Elna Newman, Bonnie Starr, JoAnn Joslin, Opal Schuster, Anita Toppila, Norma Ondriezek, Gayle Fuller, Carol Gorder, Mary Ann Redl, Marilyn Berger, Anita Grieb, Betty Roberts, Bonnie Pendo, Verda Kennedy. Third row—Roberta Rotter, Arlene Uken, Patty Lavier, Gretchen Robertson, Beverly Titus, Jacqueline Myers, Celestine Engler, Irene Stephens, Mary Doscher, Ethel Houlette, Edith Houlette, Jeanette Shostrom, Arlene Kettlehut.



In Action

Junior Play



John Hunter, Merlyn Butler, Donna Hoseman Betty Roberts Roberta Rotter Maurice Etem Dale Stoneberger Miss Craig,  
Gretchen Robertson Dean Dybing Eugene Farnsworth, Bonnie Starr JoAnn Joslin Jimmie Berzer Joyce Veitl Betty Jo Hadden



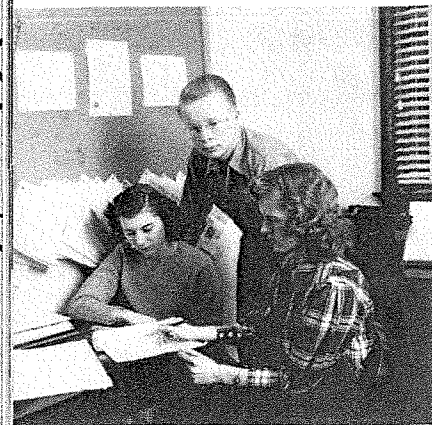
DRAMATIC CLUB: First row—Bonnie Starr, Betty Collins, Jo Ann Joslin, Anita Grieb, Mary Ann Redl, Patty Hillery. Second row—Miss Craig, Marilyn Berger, Merlyn Butler, Charles Leslie, Carol Gorder, Marlene Peyton.



Christmas Play Cast



# We Edited The Log



Thinking on the annual? . . . We dreamed of the Ides of March. Caesar sure knew his deadlines.



ANNUAL STAFF: First row—Marlene Peyton, Betty Jo Hadden, Kay Smiley, Dona Maltby, Mary Ann Redl, Patty Trucano, Donna Hoseman, Faye Margolin, Patty Hillery, Genevieve Thompson, Doran Jacobs. Second row—Mr. Brainard, Anita Toppila, Betty Roberts, Marilyn Berger, Carol Gorder, Gene Spindler, Charles Leslie, Helen Miller, Verda Kennedy, Norma Ondriezek, Anita Grieb, Gayle Fuller. Third row—Edith Houlette, Carole Ripley, Roberta Rotter, Gretchen Robertson, John Trucano, Albert Eilers, Harry Wait, Patty Lavier, Joyce Veitl, Jeanette Shostrom, Sheldon Jacobs.



BRUIN STAFF: First row—Doran Jacobs, Genevieve Thompson, Betty Jo Hadden, Kay Smiley, Mary Ann Redl, Patty Trucano, Donna Hoseman, Dona Maltby, Patty Hillery, Marlene Peyton. Second row—Betty Collins, Norma Ondriezek, Elna Newman, Betty Roberts, Verda Kennedy, Marilyn Berger, Anita Grieb, Darleen Yeaman, Gene Spindler, Anita Toppila, Mr. Brainard. Third row—Helen Miller, Jeanette Shostrom, Carole Ripley, Joyce Veitl, Theresa Ruether, Howard Mason, Gretchen Robertson, Patty Lavier, Jimmy Berger, Carol Gorder.



The Bruin office is always the scene of activity and confusion, and there's always a crowd around the bulletin board the day the assignments go up.

We Kept The Log

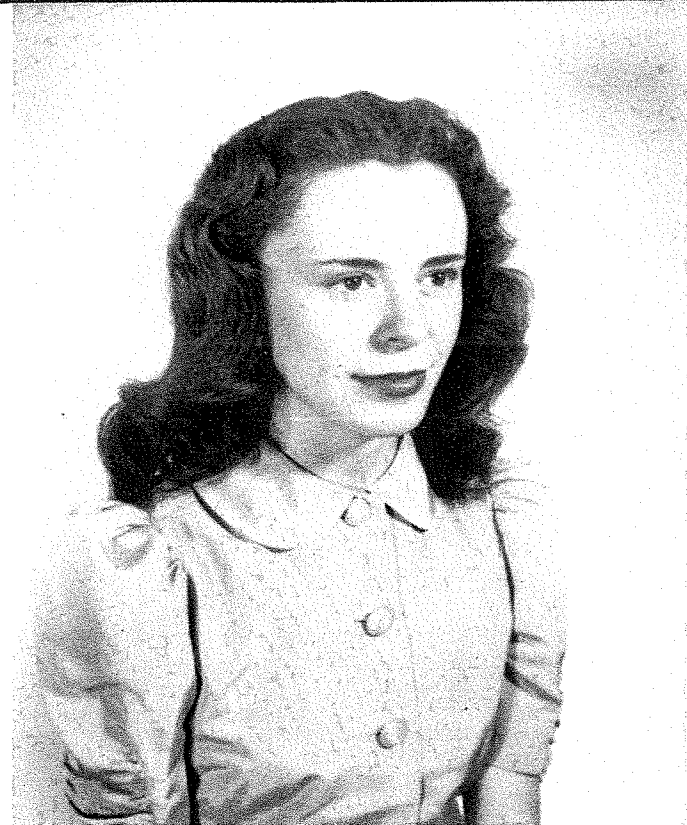


DECLAM: First row—Patty Trucano, Marilyn Berger, Verda Kennedy, Jeanette Shostrom, Carol Gorder, Betty Roberts, Patty Hillery. Second row—Arlene Uken, Patty Lavier, Gretchen Robertson, Jimmy Berger, Peggy LeVeque, Roberta Rotter, Mrs. Ferguson.



DEBATE: First row—Arlene Uken, Gretchen Robertson, Roberta Rotter, Betty Roberts. Second row—Robert Schunneman, Harry Wait, Jimmy Berger, Mr. Nelson.





GAYLE FULLER, All-School Queen



FAYE MARGOLIN, All-School Attendant

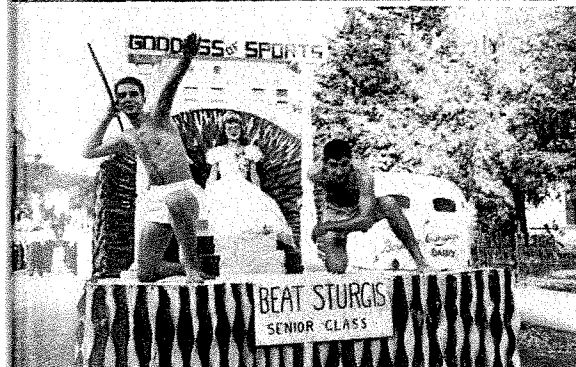
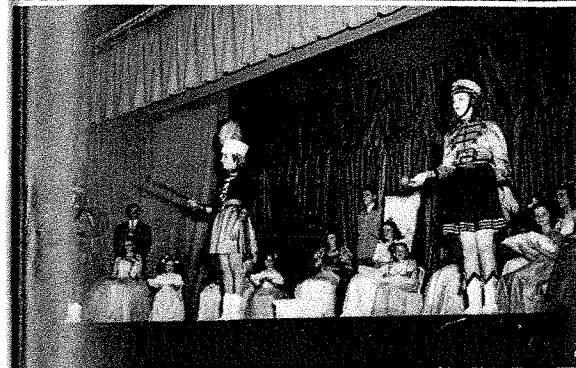
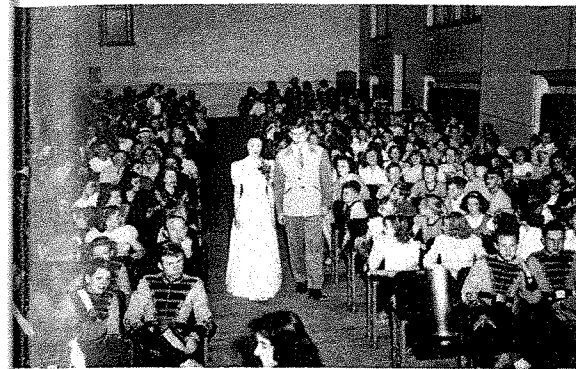


EDITH HOULETTE, All-School Attendant

The Royalty  
Processional  
Salute to the Queen



Coronation of Gayle  
All-School Float  
Bonnie Pendo,  
Junior Queen



Dona Maltby,  
Senior Queen  
Jeanenne Hurst,  
Sophomore Queen  
Majorettes

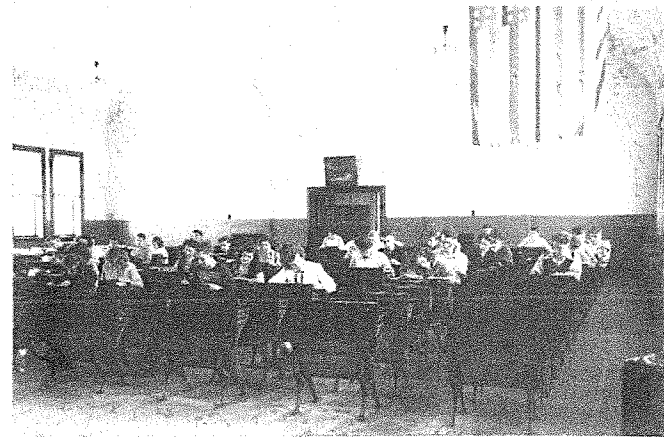


BEAR DAY



Edwina Schopen,  
Freshman Queen  
Band



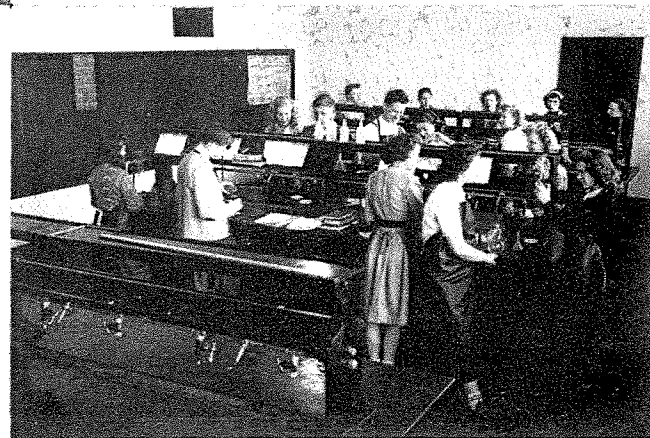


## Study Hall

Where everyone works and no one plays (?).

## Chemistry Lab.

Brewing a cure for the "new" look?



## Psychology

Come here and let us look at you.

## Mechanical Drawing

Smile pretty, boys!



## Senior Will

### SENIOR WILLS

George Acri: Wills his ability to get into mischief to Jimmy Merritt.  
Carl Beck: Wills his stylish hair-do to Johnny Trucano.  
Kenneth Blair: Wills his books to Kenneth Nelson.  
Albert Eilers: Wills his tiny feet to Betty Jo so Maurice won't have any advantage over her.  
Gayle Fuller: Wills her ability to protect herself to whomever is going steady.  
Patty Hall: Wills her twirling to Joyce Veitl.  
Robert Hatfield: Wills a package of Dentyne gum to Miss Duffy.  
Edith Houlette: Wills her editorship and a box of aspirin to Gene Spindler.  
Bill Ikola: Wills his English workbook to Buddy Butler.  
Sheldon Jacobs: Wills his clarinet to Dennie Dyvig.  
Carl Johnson: Wills his water gun to Mr. Krug.  
Bob Kelley: Wills his 1915 joke book to Mr. Brainard.  
Larry Kilty: Wills his basketball suit "OO" to Pete Becker.  
Peggy LeVeque: Wills all the luck she may have had and a lot more to a couple of swell freshman boys—Russell Stanley and Jerry Flynn.  
Dona Maltby: Wills her interest in the Junior Class to Verda Kennedy.  
Faye Margolin: Wills her dark hair and height to Gretchen Robertson.  
Jack Mee: Wills his desire to hit girls to Peanuts Newman.  
Rolly Meisch: Wills his ability to go steady to Dale Stoneberger.  
Jane Muscha: Wills her Shakespeare book to Mr. Nelson.  
Beverly McGlone: Wills her conceit to Bertie Rotter.  
Elna Newman: Wills her long dark hair to Carole Ripley.  
Fred North: Wills his brown derby to Verda Kennedy.  
Vera Porter: Wills her quiet manners to Doran Jacobs.  
Eddie Rchetto: Wills his seat in English to anyone who'll take it.  
Chuck Rotter: Wills some of his white man's blood to Bill Fish.  
Rod Rotter: Wills his nose to Maurice Etem to go with his hands and feet.  
Theresa Ruether: Wills her basketball prowess to Marilyn Berger.  
Robert Schunneman: Wills his intellect to his "little" brother.  
Pat Sherman: Wills her hubba-hubba man to Doris Jacobson.  
Lyle Speer: Wills his delivery truck to anyone who wants it.  
Bill Spindler: Wills his basketball ability and good grades to Bill Redl.  
Nadene Tetrault: Wills her typing speed to Joyce Acri.  
Genevieve Thompson: Wills her perfect band attendance to Evelyn Adams.  
Anita Toppila: Wills her lovely 2nd soprano voice to Carol Gorder.  
Arlene Uken: Wills her interest in the Navy to Donna Hoseman.  
Darleen Yeaman: Wills her persecution complex to Mr. Nelson.

The Senior class wills their indisposition to any reasonable facsimile of labor to the juniors, sophomores, and freshmen.

Class Flower: YELLOW ROSE

Class Colors: ROYAL BLUE AND WHITE

Class Motto: KNOWLEDGE IS POWER AND POWER IS SUCCESS

Not Pictured—Carl Johnson, Vera Porter, Robert Schunneman.

## Mission Accomplished

Vacation plans are becoming more and more the topic of conversation, and graduation is very near at hand. For the seniors, this will be the final "promotion." For the others, they will probably be thinking things like "Just one more year now." Or "Jeepers, I'm not a freshman any more!" All in all, our FLIGHT LOG for this year was indeed a successful one.

