

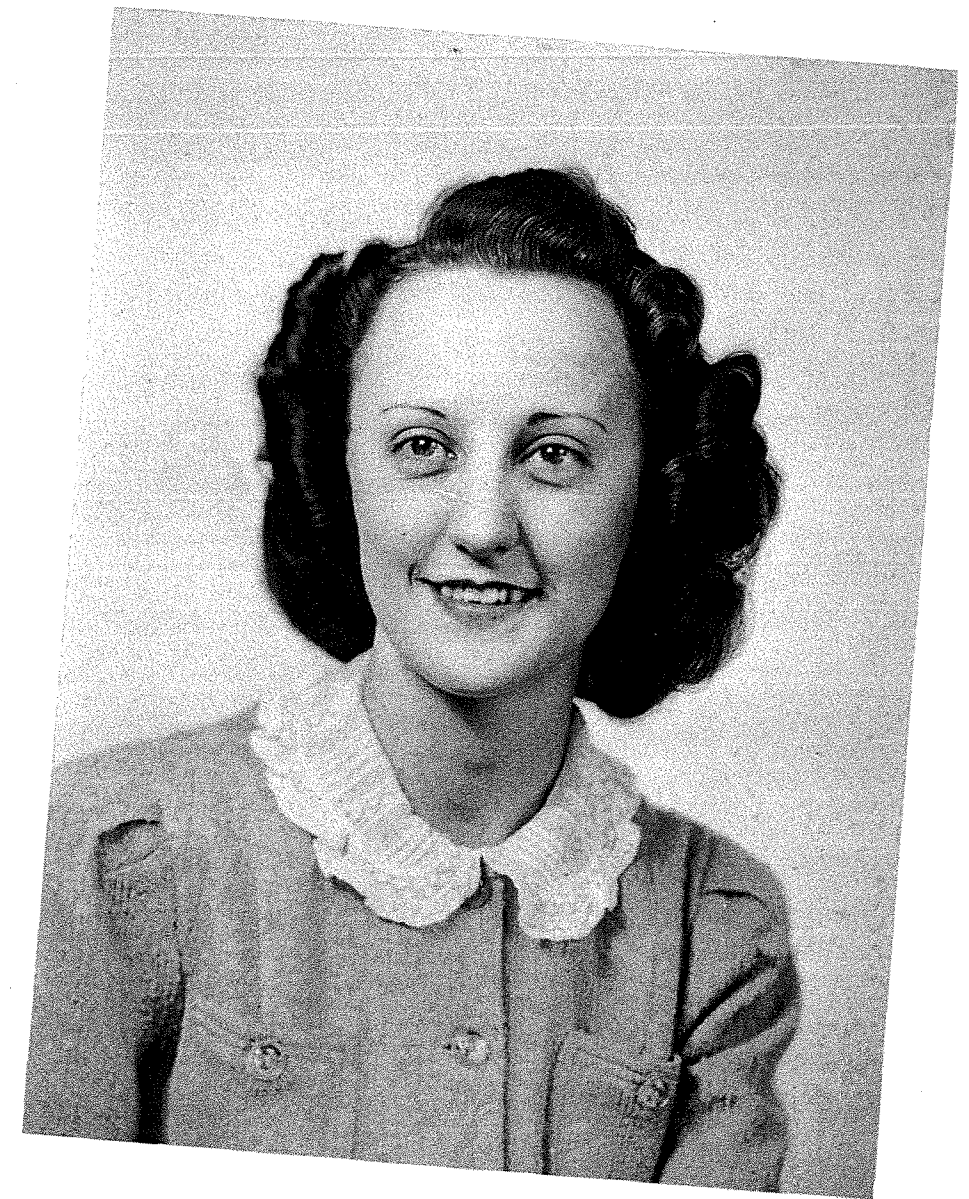
THE 1942
BEAR ECHOES



THE 1942

BEAR ECHOES

DEADWOOD HIGH SCHOOL
DEADWOOD, SOUTH DAKOTA



PROUDLY WE DEDICATE... our
1942 BEAR ECHOES to Lola Kersten, who has so willingly and efficiently
helped to make D. H. S. a better place to go to school . . .
. . . and to the boys of D. H. S. who are now serving the armed forces of
our country, helping preserve our freedom.



Superintendent H. S. Berger



Principal R. H. Krug

201-4245-2-302



Evelyn Black
Latin, French



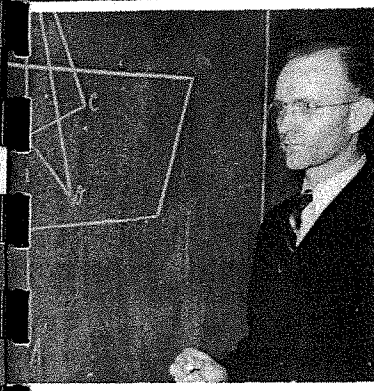
Mary Craig
Music



Beatrice Drew
English, Speech



Genevieve DuChene
Social Science, History



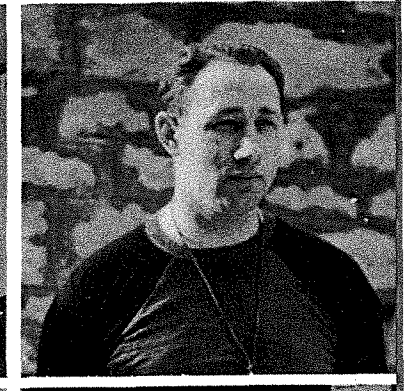
Ray Holst
Mathematics



J. Ora Horsfall
Industrial Arts



Helen Isaacson
Commerce



Frank Kerner
Head Coach



Dorothy King
English



Elsie Krause
Physical Education



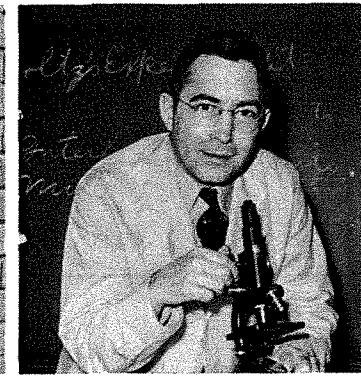
M. M. Minton
Physical Education
Assistant Coach



Mrs. M. Wiley
Homemaking



R. E. Renneke
Band, Orchestra



Kenneth Wiles
Science



Lola Kersten
Secretary

BIG BEARS . . .

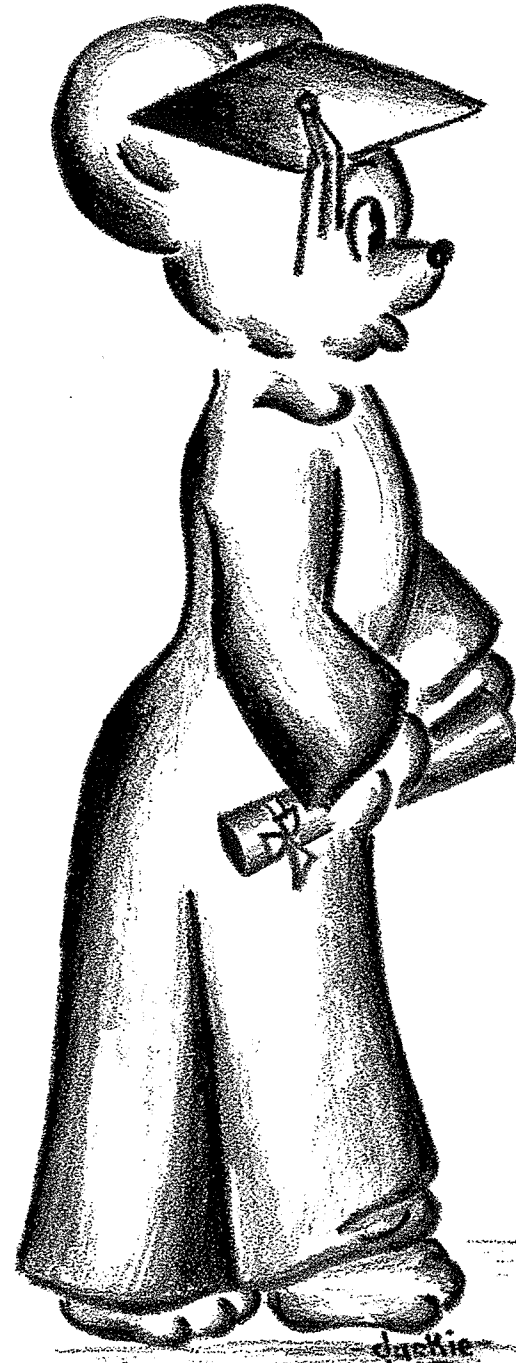
. . . EMERGING FROM THE DEN

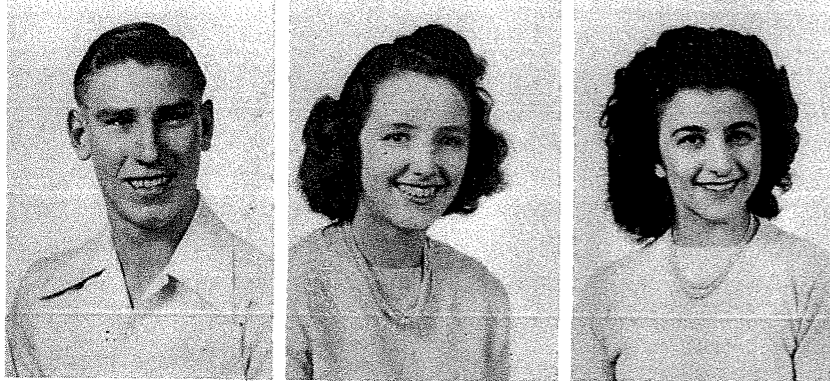
Senior Class Officers...Don Kennedy, Secretary-Treasurer; Helen Anderson, Vice-President; George Veitl, President.

Junior Class Officers...Donald Pearson, Secretary-Treasurer; Don Byrne, President; Jim Shedd, Vice-President.

Sophomore Class Officers...Joe Shea, Secretary-Treasurer; Duane Orr, Vice-President; Margaret Kirby, President.

Freshman Class Officers...Glenn Hardy, Secretary-Treasurer; Marjorie Jensen, Vice-President; Mannie Dower, President.

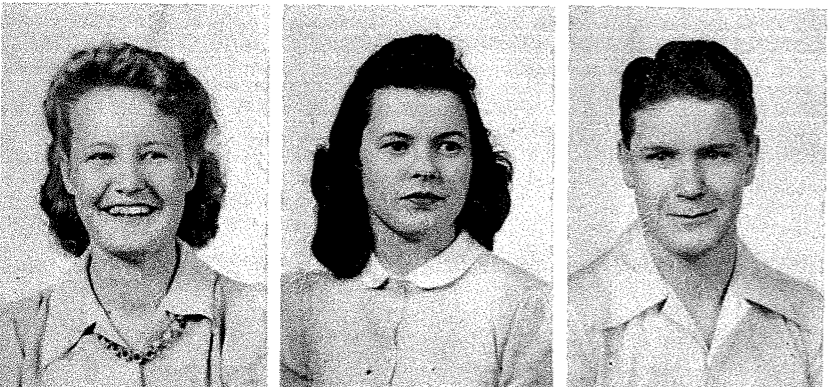




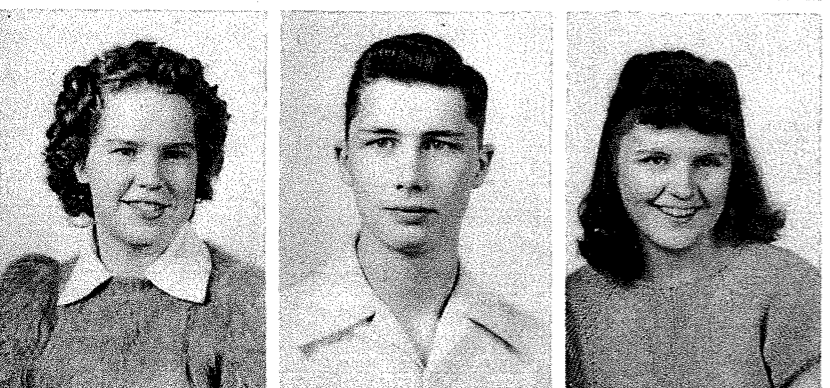
LEONARD BROWN...Football 4, Entered as a senior from the Philippine Islands. BETTE STARR...Glee Club 3-4 Mixed Chorus 4, Octette 4, Quartet 4 GAA 1-2, Junior Play, Christmas Play 4, Bear Day Queen Attendant 4, Class Queen 2, Camera Club 4, Cheer Leader 2-3-4, Student Council, Secretary 4, Senior Play 4. ROSE BESHARA...Glee Club 1-2-3, Operetta 1, Home Ec. Club 4.



PHYLLIS DYE...Glee Club 1-2, Special Glee Club 2, Operetta 1, Twirling 2-3-4, GAA 1. DONALD ALLEN..."D" Club Football 1-2-3-4, Track 1-2-3, Class Secretary-Treasurer 2, Basketball -1 2. MARY JANE MORFORD...Glee Club 1-2-3-4, Special Glee Club 2-3-4, Mixed Chorus 2-3-4, Bruin Staff 1-2-3-4 Junior Play, Quill and Scroll, Secretary-Treasurer 4.



ZELLA JOHNSON...Entered as a senior from Lead High School. JACQUELINE SMITH...Glee Club 4, Special Glee Club 4, Bruin Staff 3-4, Bear Echoes Staff, Art Editor 4, Camera Club 4. DONALD KENNEDY...Glee Club 2, Band 2 2, Student Council 3, Debate 1-3-4, Bruin Staff 2-3, Class Secretary-Treasurer 4, Junior Play, Senior Treasurer 4, Junior Play, Senior Play, Bear Echoes Business Manager 4, Christmas Play 4, Morris Debate Trophy 3.

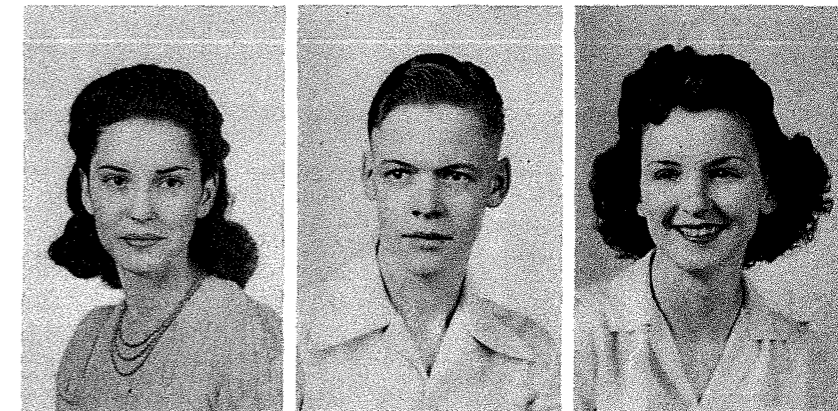


YVONNE WILLIAMS...GAA 1-4, Glee Club 1-4, Operetta 1, Bruin Staff 4. JACK ANDERSON...Football 1-2-3-4, Track 2 -3, Basketball 1-2-3-4, Boy's State Representative 3, "D" Club, Extemp. 4. CHARLOTTE MIKLETHUN...Glee Club 1-2-3-4, Special Glee Club 2-4, Operetta 1, GAAL.



BARTEL BAILEY...Entered as a Junior from Sturgis. Football 3-4, Track 3-4, Class Play 4, Mixed Chorus 3-4 Junior Play, Bank 3-4, Senior Play LILA ANDERS...Glee Club 1, Operetta Dramatic Club 1, Bear Echoes Staff 4 GAA 1-2, Camera Club. PHYLLIS PLUMMER...Glee Club 1-3, Operetta, Dramatic Club 1, Bear Echoes Staff 4, GAA 1-2, Camera Club 4.

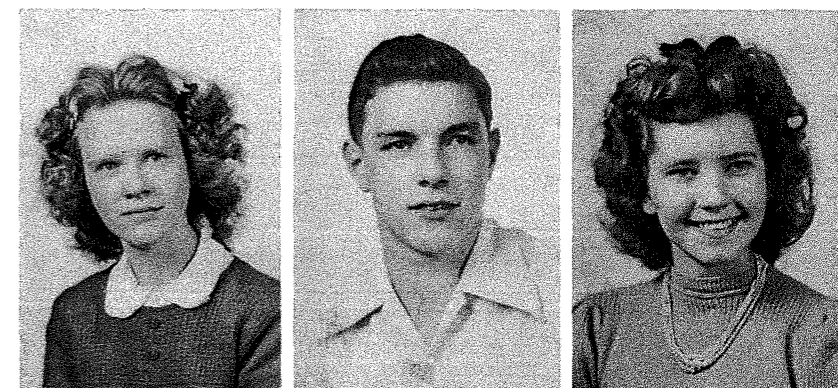
... VENTURESOME GRIZZLIES



IRENE LYNCH...GAA 1, Bruin Staff 3, Class Queen 4. ANDREW MORTENSON... Bruin Staff 1-2, PHYLLIS MATTLEY... Camera Club 4, Glee Club 1-2-3-4, Special Glee Club 2-3-4, Operetta 1, Dramatic Club 1-2, GAA 1-2, Junior Play, Quill and Scroll 4, Bruin Staff 2-3-4, Editor 4, Bear Echoes Staff 4.



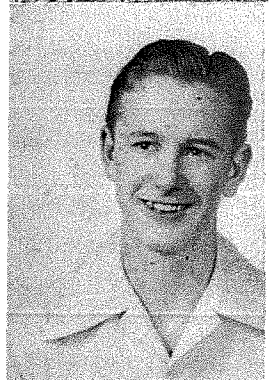
GEORGE VEITL...Basketball 1, Junior Play, Christmas Play 4, Bear Echoes Staff 4, Camera Club 4, Senior Play. LORETTA WELF...Glee Club 1-2, Special Glee Club 1-2, Operetta 1, GAA 1 2, Dramatic Club 1-2-3, Declamatory 1-2-3-4, Debate 1, Junior Play Christmas Play 4, Bear Echoes Staff 4, Senior Play. WANDA HARDY...GAA 1-2-3.



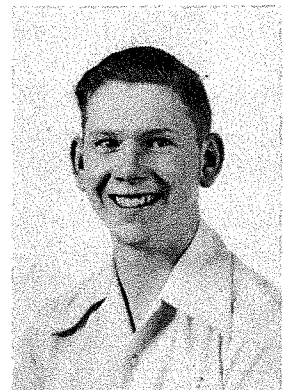
ETHEL SCHUSTER...GAA 1-2. ELTON BACON...Football 1-2-3-4, Basketball 2-3, Track 2-3, Class Play 4, "D" Club President 4, Extemp. 4, Junior Play 4, Senior Play 4, IDA SALMEN... Glee Club 3, GAA 1-2, Operetta 1, Dramatic Club 3.



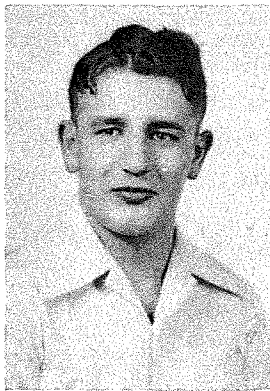
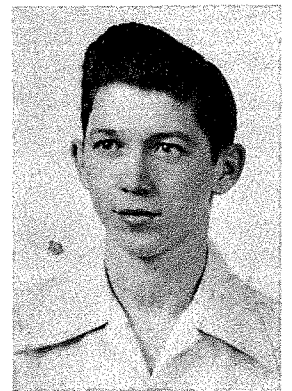
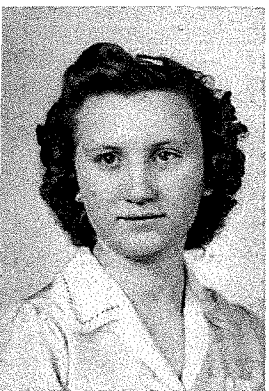
ELIZABETH BUTLER... MARY LOU BJORKLUND...Glee Club 1-2, Special Glee Club 2, Operetta 1, Dramatic Club 1-2-3-4, Declamatory 1-2, President 4, Bruin Staff 3-4, Assistant Editor 4, Bruin Staff 3-r, Assistant Editor 4, Junior Play, GAA 2, Quill and Scroll 3-4, Bear Echoes Staff 4, D.A.R. Essay Cup 2, SDHSPA Vice President 4, BHHSPA President 4. VERLYNNE LARSON...Basketball 1-2-3, Band 2-3-4.



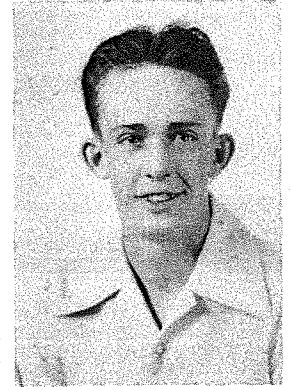
KENNETH SANDERS...Track 2-3, Declamatory 1, Debate 1-3-4, Class Officer 1, Student Council 2-3, Vice President 3, Class President 3, Home Room President 3, Vice President 4, Camera Club 4, President, Bear Echoes Staff, Photography Editor 4.
JEANNE THOMPSON...Glee Club 1, Operetta 1, Band 2-3-4, Orchestra 4, GAA 1-2-3-4. ENID MORTENSEN...GAA 1-2, Bear Day Queen Attendant 4.



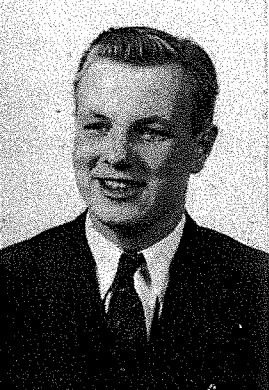
BETTY ENYEART...Glee Club 2, Declamatory 1-3-4, Junior Play 3, Bruin Staff 2, Senior Play 4, Bear Echoes Staff. VERNON ROCHESTER...Football 1-4, Basketball 1-2, Dramatic Club 3, Band 1-2-3-4, Mixed Chorus 1-2-3-4, Operetta 1, Junior Play 3, Christmas Play 4, Senior Play 4, Bruin Staff.
JEAN MCCOY...Glee Club 2-3-4, Mixed Chorus 3-4, Special Glee Club 4.



MARY HILL...Glee Club 1-3-4, Special Glee Club 3-4, Operetta 1, GAA 1.
ERWIN SCHWECKE...Basketball 2-3, Dramatic Club 3, Cheer Leader 3-4, Band 2-3-4, Junior Play 3. DONALD GULLEY...Football 1-2-3-4, Basketball 1-2-3, "D" Club, Class Officer, 2-3.

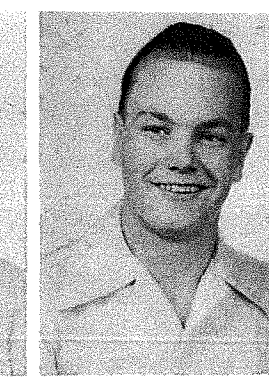
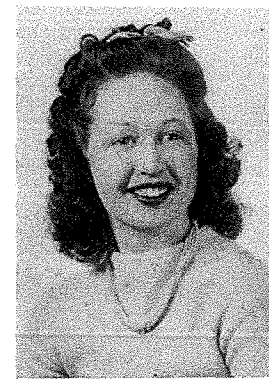


MARY HULLINGER...Band 1-2, Glee Club 1. BERNARD SMITH...Basketball 1-2-3-4. DEVOTA KILLIAN...Glee Club 1-2-3, Special Glee Club 2-3, Operetta 1, GAA 1-2, Camera Club 4, Bear Echoes Staff 4, Bruin Staff 3-4.

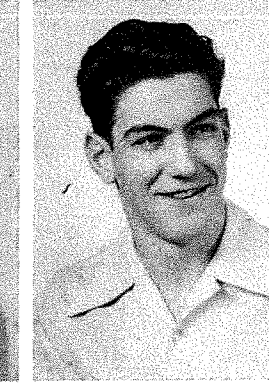


JOHN RYAN...Football 2-3-4, Basketball 2-3, Mixed Chorus 1, Operetta .
JEANNE ALBERTS...Band 2-3, GAA 1-2-3
CLEO PAGE...Glee Club 1-2-3, Operetta 1, Special Glee Club 2-3, GAA 1.

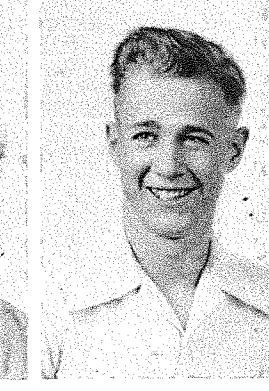
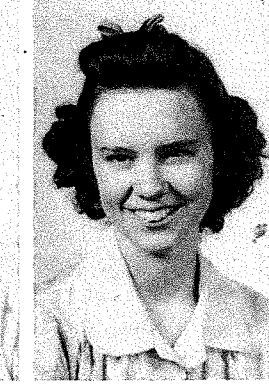
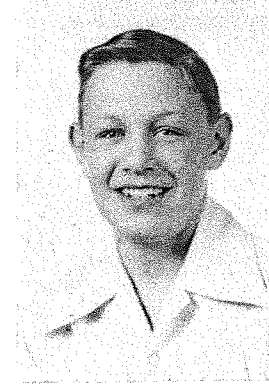
BETTY HOLLENBECK...Glee Club 1-2, Special Glee Club 2, Mixed Chorus 2, Operetta 1, Bruin Staff 2, Declamatory 2-4, Dramatic Club 1. DARLEEN FUROIS...Glee Club 1-2-3-4. Mixed Chorus 2-3-4, Special Glee Club 2-3-4, Octette 4, Junior Play 3, Operetta 1, Dramatic Club 1, Bruin Staff 1-2-3-4, Assistant Editor 4, GAA 1, Christmas Play 4, Senior Play 4.
ALTON OGARD...Football 3-4, Track 2.



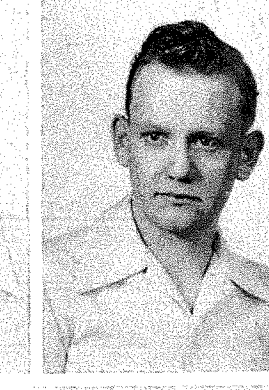
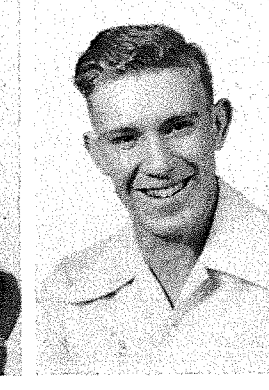
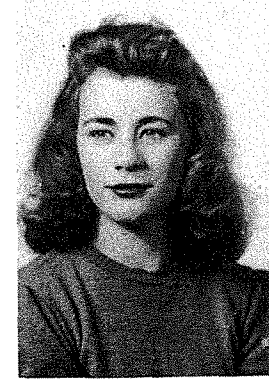
HELEN ANDERSON...Glee Club 1-2, Special Glee Club 2, Mixed Chorus 2, Operetta 1, Junior Play 3, Quill and Scroll 3-4, Class Officer, Vice President 4, Bruin Staff 1-2-3-4, Editor 1-2, Bear Echoes Staff, Editor 4.
LEONARD CROGAN...Football 2-3-4, Basketball 1-3, "D" Club, Secretary-Treasurer 4, Mixed Chorus 3, Track 1-2, Glee Club 1-2-3, Weight team 1-2-3-4. PEGGY THORESEN... GAA 1-4.



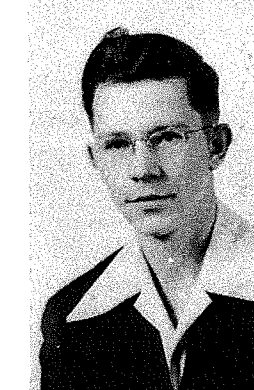
CHARLES KAUFMAN...Glee Club 2, Mixed Chorus 1, Junior Play 3, Bruin Staff 1. GERALDINE SCHLATTER...Glee Club 1-2-3-4, Special Glee Club 2-3-4, Octette 4, Mixed Chorus 1-2-3-4, Operetta 1, Dramatic Club 1, Twirling 2-3-4, GAA 1-2-3, Bruin Staff 1-2, Junior Play 3. BLAINE NORTON... Track 2-3, Football 2-3-4, Class Officer 2, Camera Club 4.



MARY ELLEN WAIT...Special Glee Club 2-4, Mixed Chorus 4, Bruin Staff 2, Bear Echoes, Assistant Editor 4, Twirling 2-3-4, Howe Scholorship Cup 2, Debate 4, Extemp 4, Declamatory 2, GAA 2. ROLAND BREWER...Football 1-2-3-4, Basketball 1, Track 1-2.
ROBERT JACOBSON...

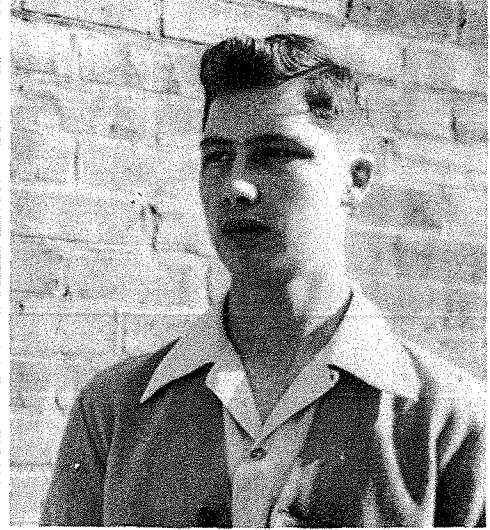


DALE BRUNS...Working 1-2-3, Junior Play 3.





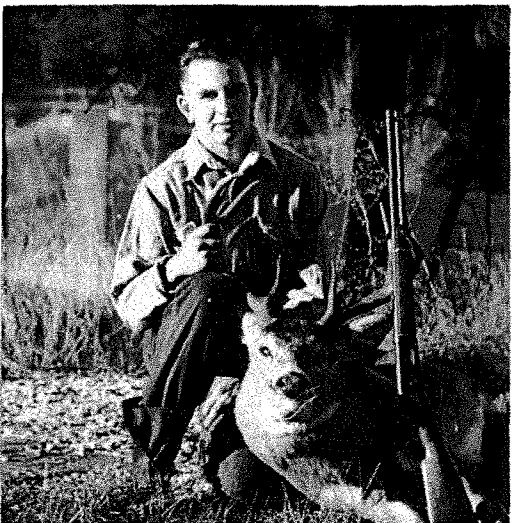
Helen...editor's difficulties



"Andy" to Boy's State



Mary Ellen...DAR choice



Allen stalked his prey...



Phyllis approves...



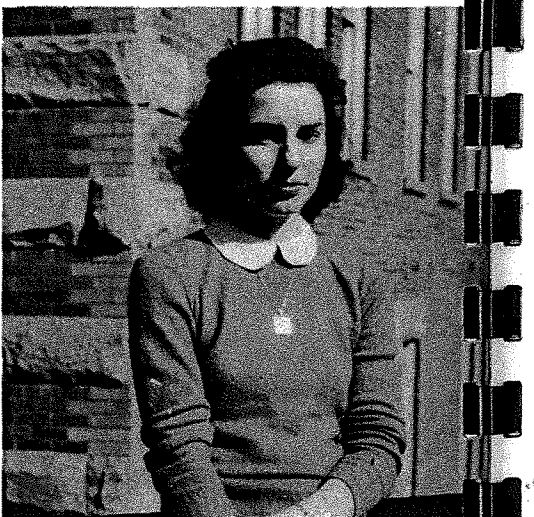
Shutterbug-Sanders



Kaufman at the keys...

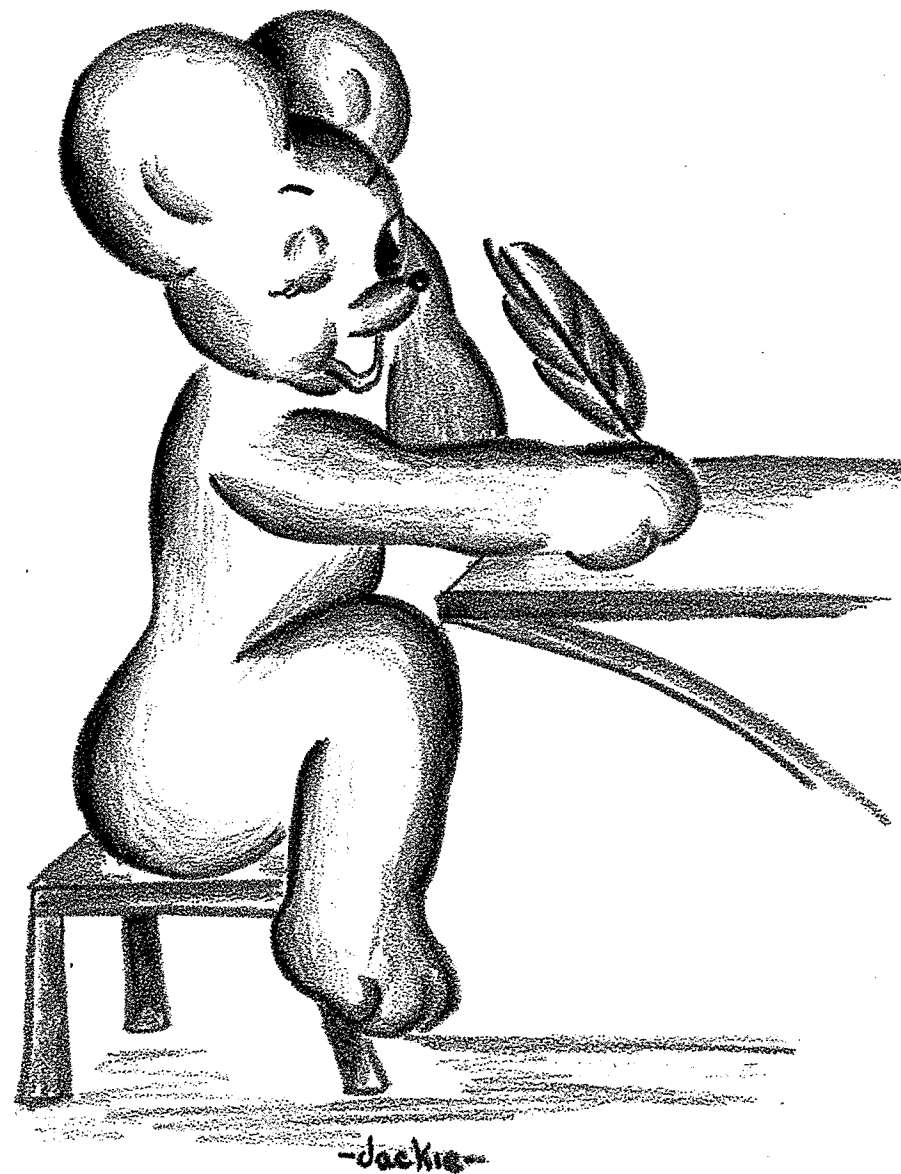


Loretta...Demolay sweetheart



Queen Irene

... BEAR TRACKS



-Jackie-

... BUT SLIGHTLY RELUCTANT



Junior Class: Back row...James Maynard, Harold Hays, Donald Nelson, Fred Klein, Donald Pearson, George Thoresen, Donald Byrne, Ed Brown, Bill Ewing, Joe Osloond, Jimmy Shedd, Robert Hallock, Leonard Kahler, Harold Hunt, Robert Hogarth. Second row...Lois Jensen Leatrice Lawler, Winifred Clingman, Yvonne Martin, Dorothy Sloss, Grace Ewing, Ethelyn Phillips, Ora Jean Gillam, Laurel Windburn, Elaine Costello, Shirley Banigan, Margie Skinner. First row...Joy Eames, Reba Norman, Joan Jackson, Arlene Thompson, Frances Wilson, Sadie Ikola, Anita Ormsby, Dottie Adams, Barbara Baker, Thelma Costello, Betty Plummer, Verla Erickson, Jean Fralick, Delma Henderickson, Eunice Schuster. Not pictured...Phyllis Redl, Lyle Collins, Orvil Simons, Jean Spaulding. Sponsors... Miss Black, Mrs. Wiley.

AUDACIOUS , BUSTLING KOALAS. . .

Bruin giver-outers...



Jimmie—Boys' State '42



Sadie the vendor



Sophomore Class: Back row...Duane Orr, Larry Ryan, Tom Shedd, Jack Brownlow, Rodney Camper, Calvin Bartel, Junior Erickson, Jack Vietl, Donald McGill, David Titus, Bob McGlone, Pat Hampel, Tom Tretheway, Burton Killian, Donald Heil, Donald Campbell, Jim Beck. Middle row...Bill Phalen, Charles Clifton, Jack Romanek, Pierre Fleissner, Urban Brandon, Fern McCrerey, Marcella Bakke, Bernice Dinnell, Patricia Siegfred, Ruth Smith, Helen Gilmore, Betty Lou Berry, Annabelle Pringle, Donald Dahlberg, Carl Eilers, Jack Baker, Joe Shea. First row...Rodney Dunn, Ellabelle Windburn, Maxine Sorensen, Helen Lauer, Kathleen Gormen, Jean Williams, Arlie Hullinger, Margaret Trew, Mary Savage, Vera Mae Blair, Dorothy Whitney, Elsie Ogilvie, Betty McDonald, Peggy Ann Margolin, Margaret Kirby, Jacqueline Norton, Walter Daniel. Not pictured...John Gravelle, Paul Vancas. Sponsors...Miss Krause, Miss Orton.

... SMALL YET CONFIDENT PANDAS

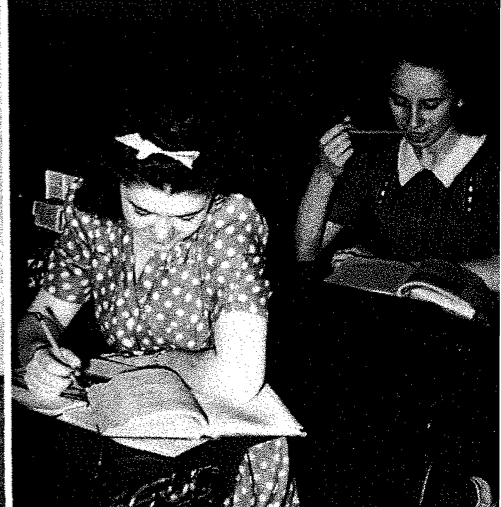
E C H O lettermen



Helen—Sophomore royalty



Really studying!





Freshman Class: Back row...Dean Likens, Kenneth Aldrick, Joe Drollman, Charles Adkison, Billy Walker, Bob Ware, Wayne Starr, Mannie Dower, Betty Sucow, Emma May Caldwell, Alice Hiddleson, Georgia Ayres, Leslie Duncan, Junior Lucas. Second row...Glenn Hardy, Charles Peyton, Kathryn Byrne, Virginia Arant, Laura Jean Meyers, Isabelle Gerhard, Arlyse Brown, Patricia Dunne, Audrey Rotter, Barbara Wait, Marjorie Jensen, Peggy LaDue, Gretchen Hemminger, Henry Bjorklund, Lionel Asher, Ernest Sivertsen, Genie Wallace. First row...Junior Measel, Jack Redl, Lois Johnson, Aileen Nelson, Idelle Hanna, Patricia Smith, Violet Matulovich, John Hays, Richard Hegstrum, Dick Nielsen, Roger Hegstrum, Donald Plummer, Lloyd Miller, Harris Geary, Edward Anders, Joan Derosier, Betty Clingman, Belva Tech. Not pictured...Martin Caretto, Leland Mortensen. Sponsors...Mr. Minton, Mr. Wiles.



Bookworms...



Explosives?!



Globetrotters Pierre, Lila, and Bill



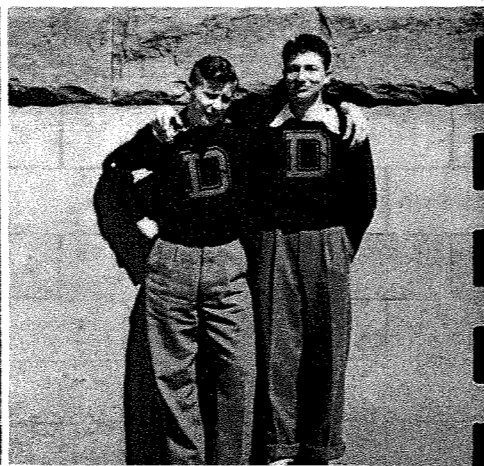
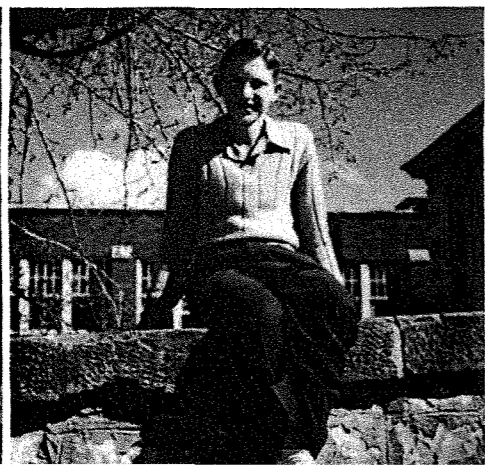
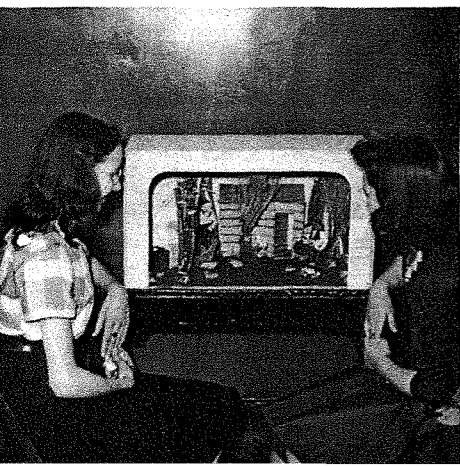
Definitely businesslike

BASHFUL, FROLICHSOME CUBS...

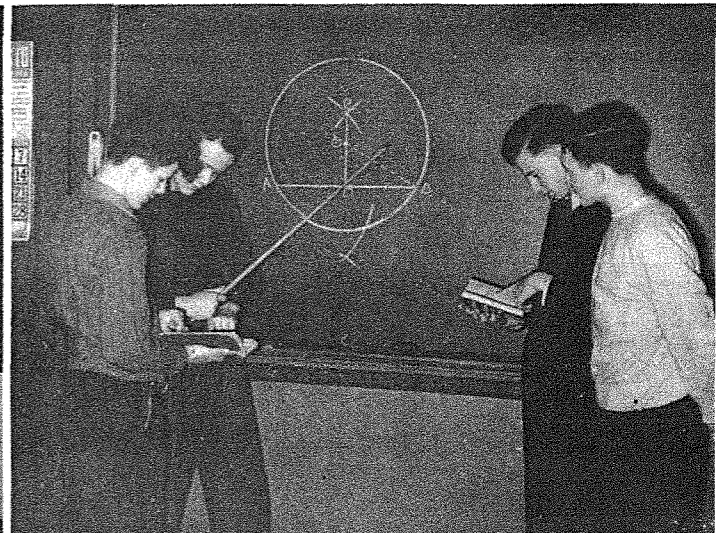
Adventure on Treasure Island

Henry relaxes...

Athletic neophytes



"Grammar" Girls



A pointer in geometry

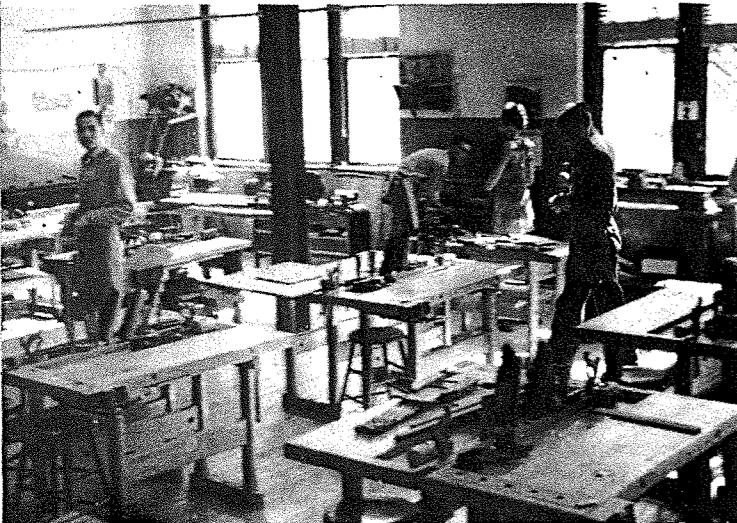
BUSY BEARS...



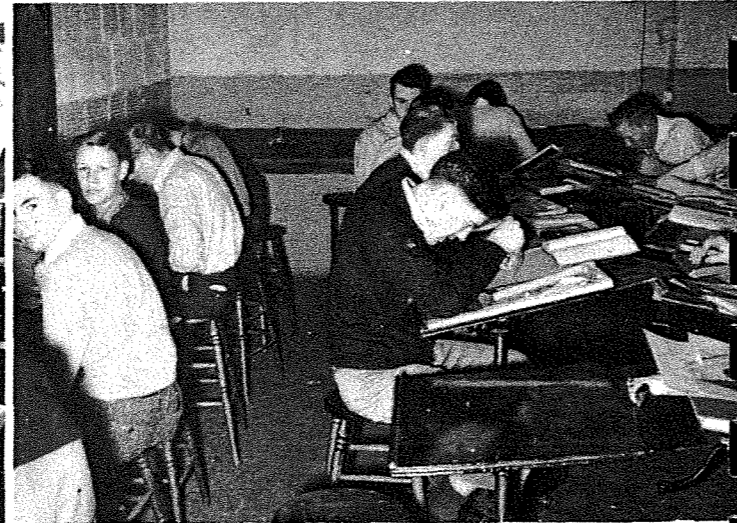
Diet-conscious



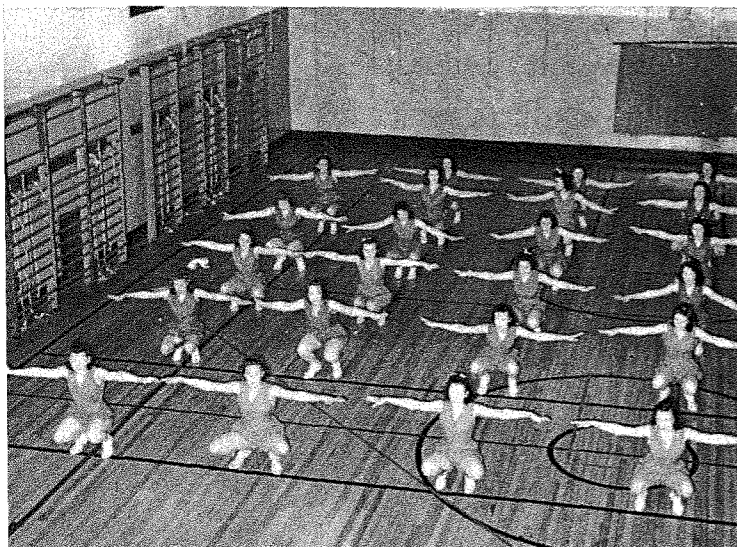
Stitch-in-timers



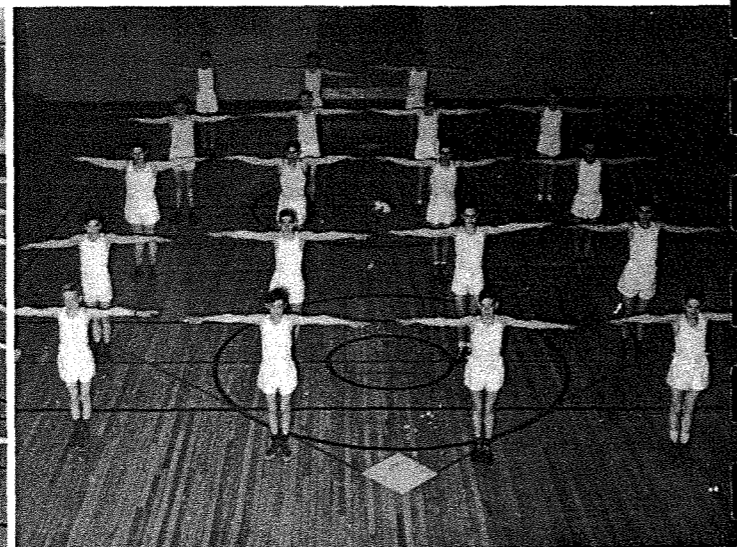
Termites



Tomorrow's draftsmen



Slimmer-downers



Builder-uppers

... PERFORMING BEARS



LEADERS OF THE DEN...



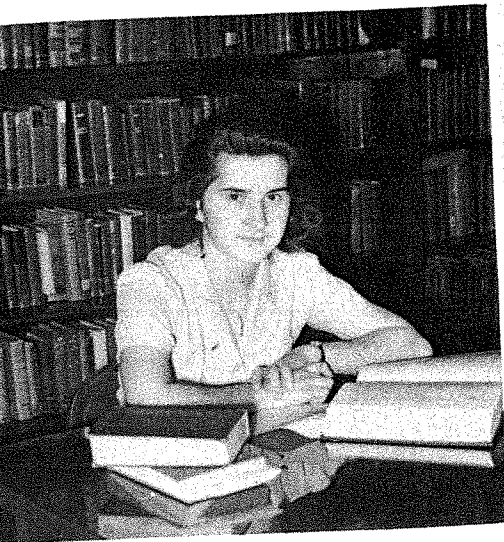
MOST REPRESENTATIVE
Mary Lou Bjorklund



BEST MUSICIAN
Charles Peyton



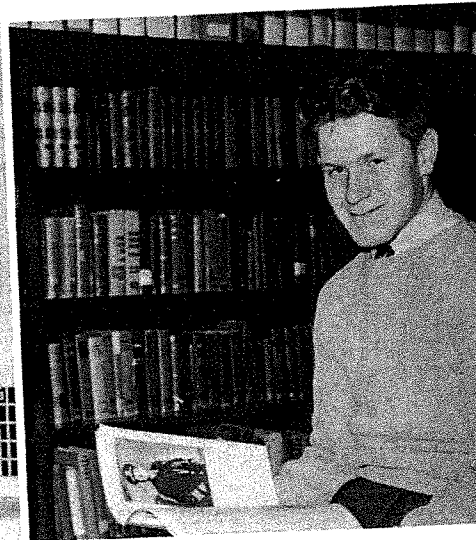
MOST POPULAR
OUTSTANDING LEADER
Bette Starr



BEST STUDENT
Margaret Kirby



MOST LIKELY TO SUCCEED
Jackie Smith



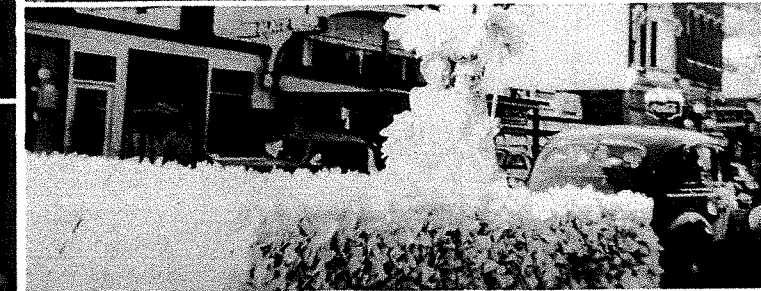
BEST SPEAKER
Don Kennedy

Not pictured...BEST ATHLETE, Orvil Simons

BEAR DAY

October 17, 1942
FRIDAY AFTERNOON
Coronation of Bear Day Queen
Parade
FRIDAY EVENING
Snake dance to football field
Deadwood 13; Sturgis--0

Queen Phyllis with honored maidens Bette and Enid...The Queen and Captain Bob...Elaine reigns for the Juniors...Noticed at the game...Marching to victory...



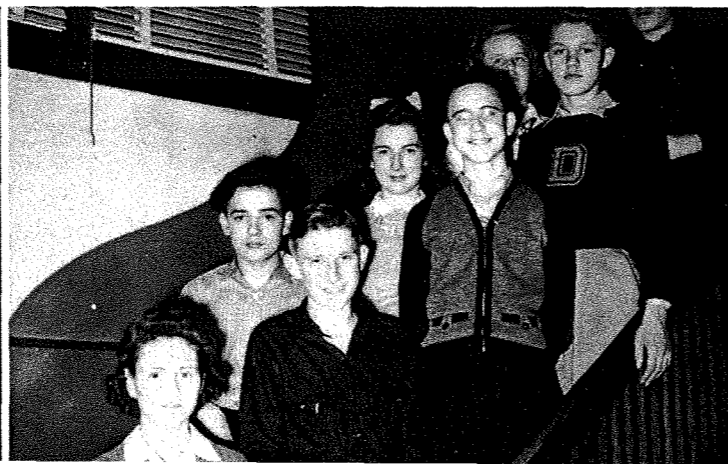


Student Council...Joan Jackson, Vice-President, Henry Bjorklund, Wayne Starr, Mary Lou Bjorklund, President, Principal Krug, Bette Starr, Secretary, Joe Shea, Frances Wilson, Burton Killian...

MAYOR KRUG AND HIS COUNCIL . . .

Junior-Senior Home Room Officers...Frances Wilson, Joan Jackson, Bette Starr, Kenneth Sanders, Mary Lou Bjorklund, Don Kennedy: Not pictured...Leatrice Lawler, Harold Hays.

Freshman-Sophomore Home Room Officers...Kathryn Byrne, Burton Killian, Henry Bjorklund, Helen Gilmore, Charles Peyton, Patty Siegfred, Wayne Starr, Joe Shea (slightly decapitated).



Staff: Back row...Don Kennedy, George Veitl, Jackie Smith, Kenneth Sanders, Pierre Fleissner, Leatrice Lawler, Mary Hill. Second row...Joan Jackson, Margie Skinner, Devota Killian, Phyllis Plummer, Betty June Enyeart, Bette Starr. Front row...Verla Erickson, Sadie Ikola, Phyllis Mattley, Helen Anderson, Loretta Welf, Reba Norman, Miss King, adviser. Not pictured...Mary Lou Bjorklund, Henry Bjorklund, Thelma Costello, Mary Ellen Wait.

BEAR ECHOES

Mary Ellen Wait, assistant editor; Jackie Smith, art; Helen Anderson, editor; Kenneth Sanders, photography; Don Kennedy, business manager.



Staff...member of SDHSPA; Phyllis Mattley, editor; Miss Orton, adviser.

Quill and Scroll: Standing...Darleen Furois, Joy Eames, Miss Orton, adviser, Thelma Costello, Mary Lou Bjorklund. Seated...Mary Jane Morford, Helen Anderson, Phyllis Mattley, Grace Ewing, Elaine Costello.



BRU



District Debaters...Don Kennedy, Miss Drew, adviser, Kenneth Sanders.

Debate Squad: Don Kennedy, Kenneth Sanders, Miss Drew, adviser, Mary Ellen Wait, Lila Anders.



GROWLING GRIZZLIES . . .

Extemporaneous Speakers: Standing...Joe Drollman, Jackie Smith, Elton Bacon, Joan Derosier, Loretta Welf, Kenneth Sanders, Charles Kaufman. Seated... Dick Nielsen, Roger Hegstrum, Mary Ellen Wait, Jack Anderson, Barbara Wait, Margaret Kirby, Henry Bjorklund.

Declaimers...Betty June Enyeart, Betty Lou Berry, Henry Bjorklund, Loretta Welf, Betty Hollenbeck.



EARLY TO BED — EARLY TO RISE



Stage managers...Mary Jane Morford Leonard Brown, Helen Anderson, Phyllis Mattley, Phyllis Dye, Geraldine Schlatter.



Senior Play Cast...Back row...Bartell Bailey, George Veitl, Vernon Rochester, Elton Bacon, Don Kennedy. Front row...Betty Enyeart, Bette Starr Betty Hollenbeck, Loretta Welf, Mary Lou Bjorklund, Darleen Furiois.

SPRING FEVER

Junior Play Cast...Jimmie Shedd, Jean Spaulding, Margie Skinner, Elton Bacon Reba Norman, Bill Ewing, Thelma Costello, Laurel Winburn, Arlene Thompson, Don Pearson. Left...Stage Managers, Joan Jackson and Leatrice Lawler.





Christmas Play Cast...Vernon Rochester, Loretta Welf, Mary Lou Bjorklund, George Veitl, Bette Starr, Don Kennedy, Darleen Furcis...Amantha's letter—80 years late!



SANTA'S PUBLICITY AGENTS

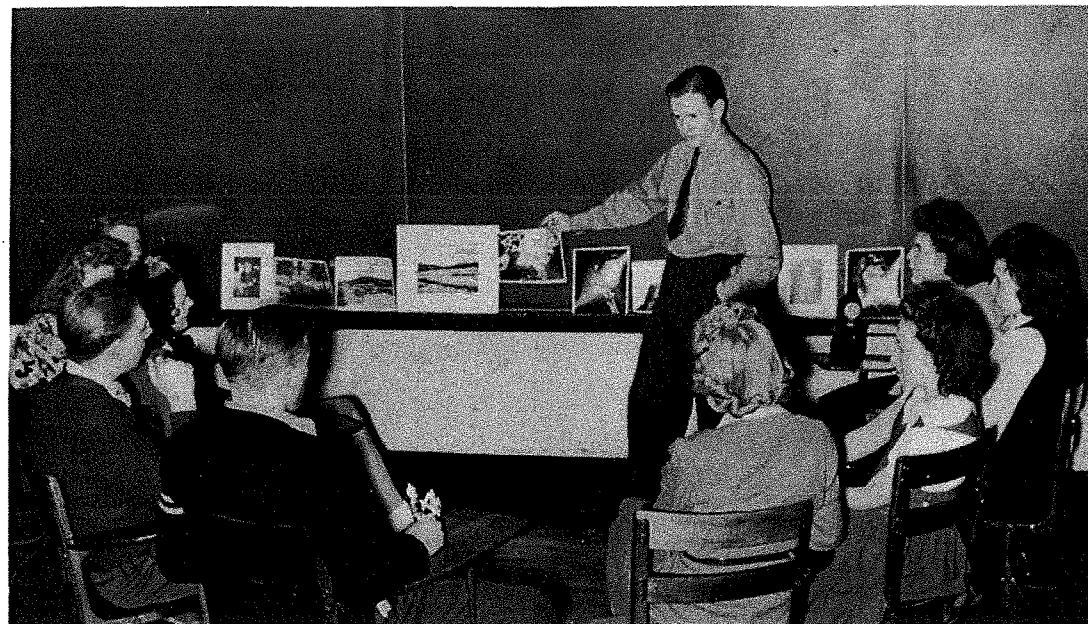


Dramatic Club...Henry Bjorklund, Miss Craig, Sponsor, Ernest Sivertsen, Patty Smith, Pierre Fleissner, Larry Ryan, Tom Shedd, Joan Deroiser. Not pictured.. Kathryn Byrne. At left...make-up artists.

"BEAR"-YMORES



FILM FANATICS



Camera Club...Pierre Fleissner, Phyllis Plummer, Jackie Smith, Secretary, Joe Oslood, Blaine Norton, Kenneth Sanders, President, Miss King, adviser, Betty Hollenbeck, Vice President, Devota Killian, Verla Erickson. Not pictured...Marjorie Jensen, Phyllis Mattley, Ernest Sivertsen, Margie Skinner, Bette Starr.

CAN SHE BAKE A CHERRY PIE . . . ?



Home Ec Club...Patty Smith, Kathryn Byrne, Virginia Arant, Laura Jean Meyers, Georgia Ayres, Idelle Hanna, Rose Beshara, President, Verla Erickson, Maxine Sorensen, Arlie Hullinger, Dorothy Whitney, Alice Hiddleson, Isabelle Gerhard, Betty Clingman. Mrs. Wiley, adviser. Not pictured...Marcella Bakke, Bernice Dinnell, Junita Hansen, Marjorie Jensen, Violet Matulovich, Fern McCrorey, Betty Suckow.

MUSIC IN THE AIR



Band: Back row...Gene Palmer, Virginia Arant, Georgia Ayres, Pierre Fleissner, Harry Mantas, Henry Bjorklund, David Titus, Charles Clifton, Arlie Hullinger, Junior Lucas, Lois Jensen, Elsie Ogilvie, Ernest Sivertsen, Norma Ghere, Harry Adams, Don Heil. Third row...Genie Wallace, Jack Romanek, Louis Ondrasek, Shirley Ellis, Donald Ellis, Jack Redl, John Gravelle, Kathryn Byrne, Beverly Vines, Alice Hiddleston, Laura Jean Myers, Olive Antelman, Arlene Lewis. Second row...Billy Spindler, Gene Welf, Sally Marshall, Richard Irb, Jean Hegstrom, Leland Hoseman, Dick Nielsen, Jean Thompson, Marjorie Jensen, Thayer Brand, DeVona Myers, Charles Peyton, Bessie Hullinger, Bernard Piper, Edith Roesler, Royal Mills, Sheldon Jacobs. Front row...Peggy LaDue, Joan Derosier, Barbara Wait, R. E. Renneke, director, Phyllis Dye, Mary Ellen Wait, Geraldine Schlatter.



Special Glee Club: Back Row...R. Beshara, P. Margolin, G. Wallace, M. E. Wait, M. Jensen, C. Miklethun, M. Hill, B. Berry, B. Starr, V. Erickson, G. Schlatter, J. McCoid. Front row...K. Byrne, T. Coste, Thompson, F. Wilson, H. Gilmore, M. Skinner, P. Mattley, A. Pringle, G. Hemminger, M. Morford, M. Sorensen. Inset...Miss Craig, director. Left...Margie Skinner.

MELODY MAKERS...

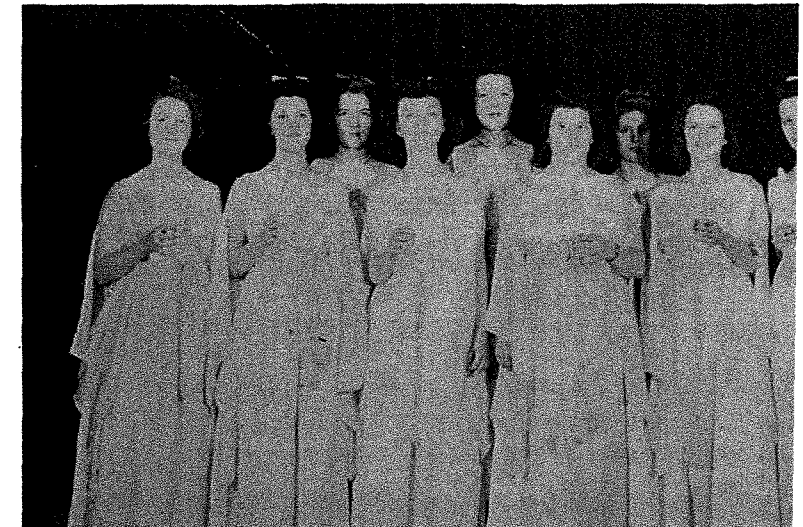
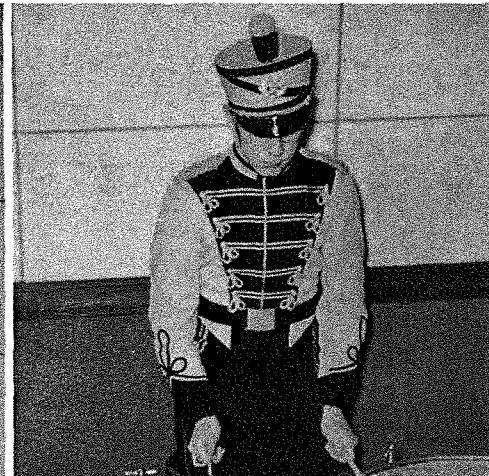
Com-pah...Junior

Rhythm-beater Bartell

Tootler "Roch"



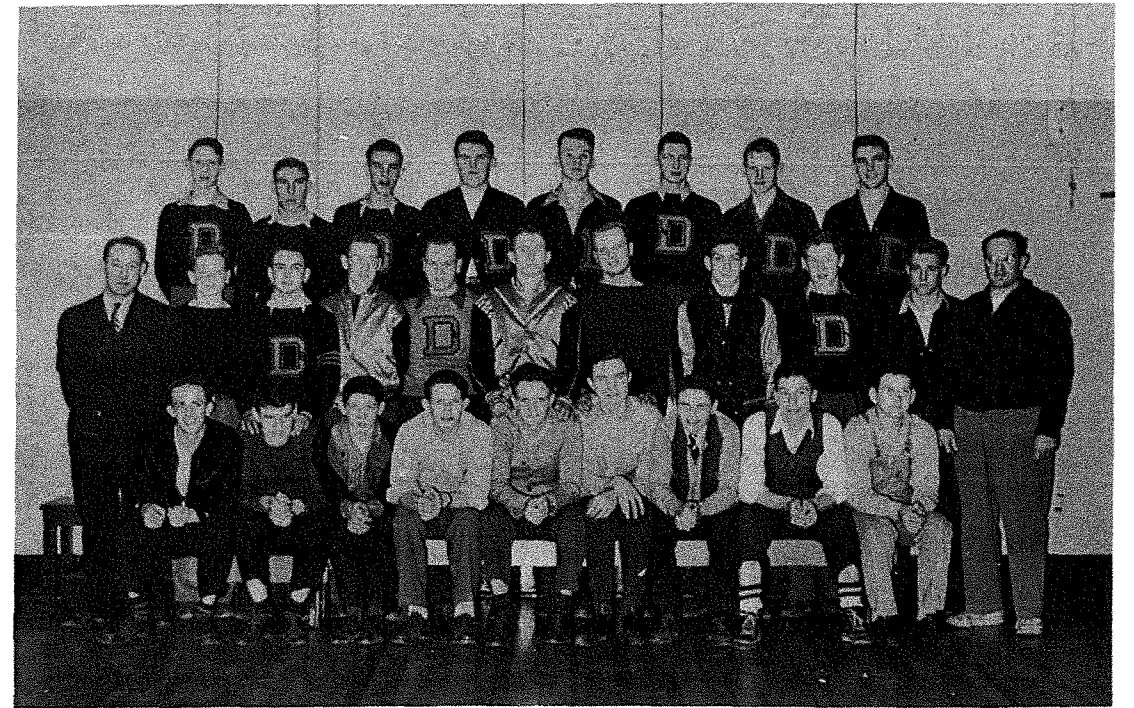
Girls' Choir: B. Berry, D. Furois, H. Gilmore, G. Hemminger, M. Sorensen, V. Erickson, M. Morford, B. Starr, G. Schlatter, Miss Craig, director.



. . . LORDS OF THE LAIR



Orchestra: Back row... G. Hemminger, A. Hiddle- sen, B. Spindler, D. Ellis, C. Peyton. Third row...R. Irby, V. Blair, K. Byrne, L. Jensen, E. Ogilvie, B. Vines, E. Roesler. Second row... E. Caldwell, S. Ellis, J. Thompson, L. Hoseman, P. LaDue, B. Wait. Front row...B. Plummer, T. Ruether, J. Gravelle, G. Welf, Mr. Renneke, di- rector.



"D" Club...back row: Walter Daniels, Leonard Brown, Paul Vancas, Carl Eilers, Lyle Collins, Jack Anderson, Vice President, Don Ryrne, Elton Bacon, President. Second row...Coach Kerner, Pierre Fleissner, Don Allen, Bartell Bailey, Alton Ogard, Don Pearson, John Ryan, Leonard Croghan, Secretary-treasurer, Don Gulley, Blaine Norton, Assistant Coach, Minton. Front row... Bernard Smith Robert Hallock, Irwin Schwewecke, Don Campbell, Bill Ewing, Edwin Brown, Duane Orr, Mannie Dower, Vernon Rochester. Not pictured...Don Heil, Harold Hunt, Don Gulley.



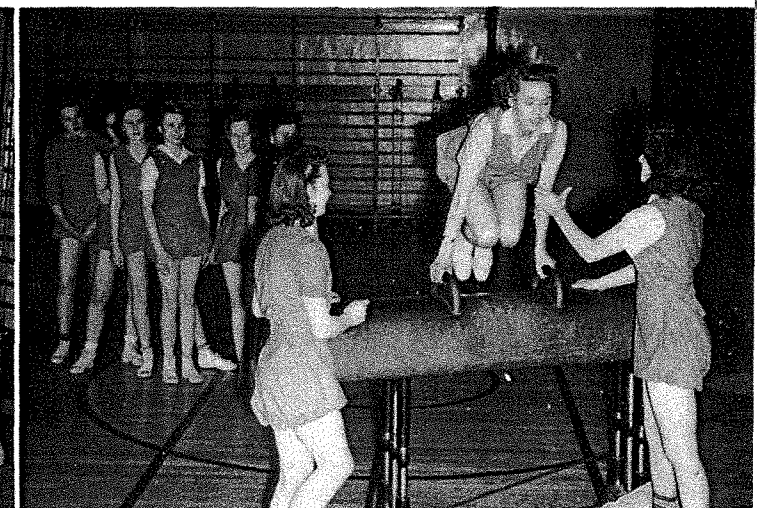
Mixed Chorus: Boys...R. Camper, L. Ryan, B. Bai- ley, V. Rochester, D. Heil, E. Sivertsen, B. Killian, H. Bjorklund, J. Erickson, D. McGill. Girls...A. Rotter, M. Skinner, G. Wallace, H. Gilmore, B. Starr, V. Erickson, P. Dunne, H. Lauer, M. Wait, Miss Craig, director, G. Sch- latter, K. Gorman, Dar- leen Furois.

G.A.A. . . .

Verla Erickson, president, Betty Plummer, Eunice Schuster, Mary Savage. Middle row...Jean Williams Marcella Bakke, Emma May Caldwell, Arlie Hullinger Vice President, Yvonne Martin, Front row...Genie Wallace, Isabelle Gerhard, Betty Clingman, Belva Tech, Dorothy Whitney, Maxine Sorenson, Treasurer,

Belva Tech, Isabelle Gerhard, Arlie Hullinger, Betty Clingman, Jean Williams, Genie Wallace, Em- ma May Caldwell, Maxine Sorensen, Marcella Bakke.

General Glee Club: Back row...R. Beshara, K.Gor- man, P. Smith, H. Lauer, L. Johnson, Y. Martin, A. Rotter, P. Margolin, B. Berry. Second row... J. McCoid, D. Furois, T. Costello, M. Savage, A. Brown, P. Dunne, Y. Williams, M. Wait, M. Jensen, M. Sorensen, F. Wilson. Third row...H. Gilmore, A. Thompson, M. Skinner, P. Mattley, A. Pringle, B. Dinnel, V. Erickson, G. Hemminger, J. Smith. Front row... Miss Craig, director, G. Wallace, J. Derossier, P. LaDue, G. Schlatter.





Football Squad...Back row: Adkison, Asher, Ware, Osloond, Orr, Thoresen, E. Brown, Ewing, Starr, Campbell, J. Shedd, Klein, Hardy, Nielsen, G. Norton. Middle row: T. Shedd, Brownlow, Dow r, Eilers, Sampson, L. Brown, Vancas, Bailey, Hunt, Pearson, Rochester, B. Norton. Front row: Coach Kerner, Gulley, Brewer, Ogard, Orlin Simons, Ryan, Orvil Simons, Anderson, Dollins, Byrne, Bacon, Croghan, Allen.

GRRR . . .



Some of the fightin'est Bears

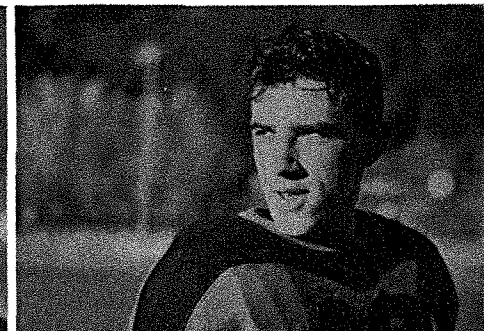
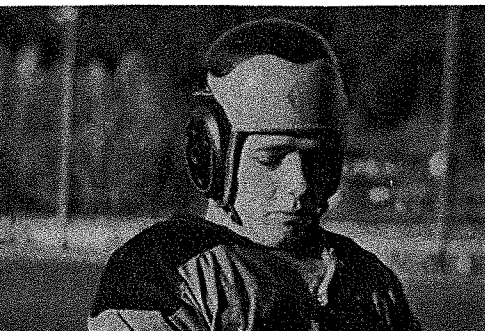
Norton



"C'mon, gang, let's go!"

Eilers

Vancas



Sampson



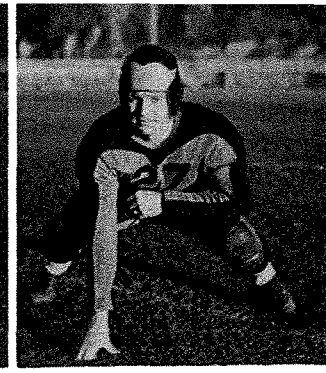
Croghan



Simons



Brewer

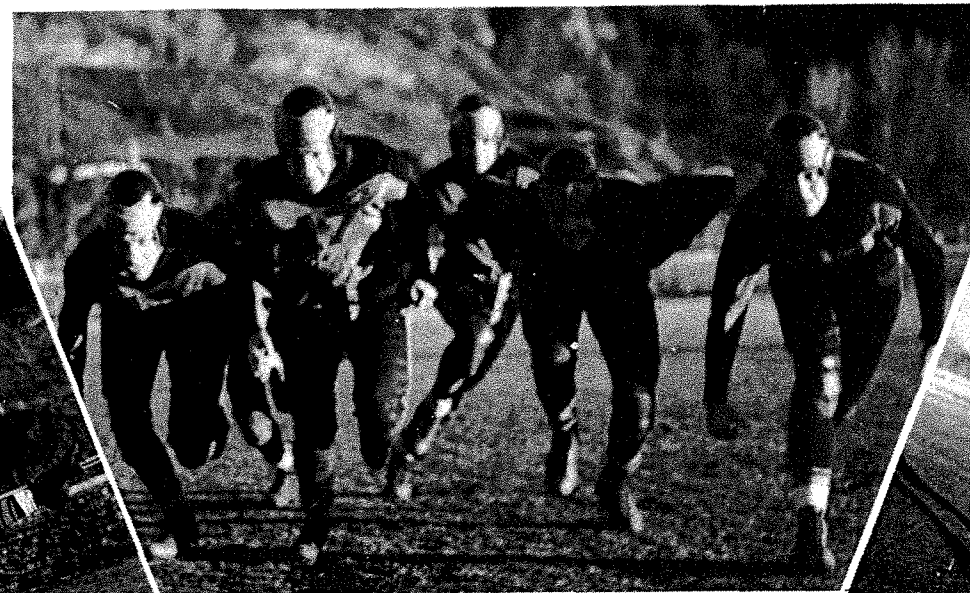


Ryan

Deadwood 18.....Buffalo, Wyo. 43 Deadwood 0.....Rapid City 27 Deadwood 6.....Hot Springs 32
 Deadwood 0.....Spearfish 13 Deadwood 39.....Edgemont 0 Deadwood 13.....Sturgis 0
 Deadwood 6.....Belle Fourche 0 Deadwood 15.....Lead 45



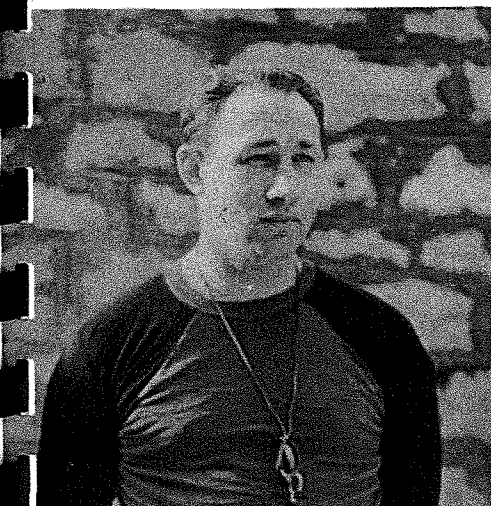
Byrne



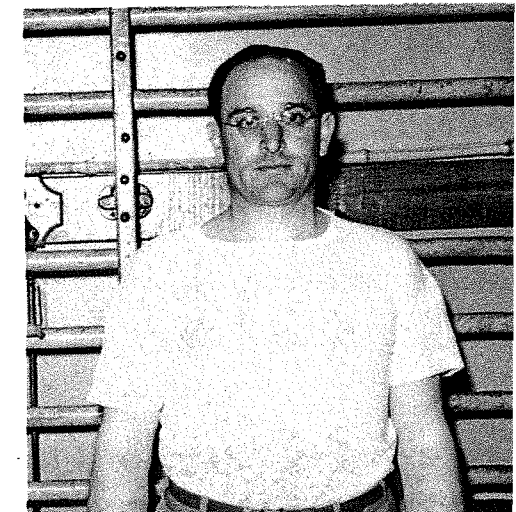
Get out of the way...



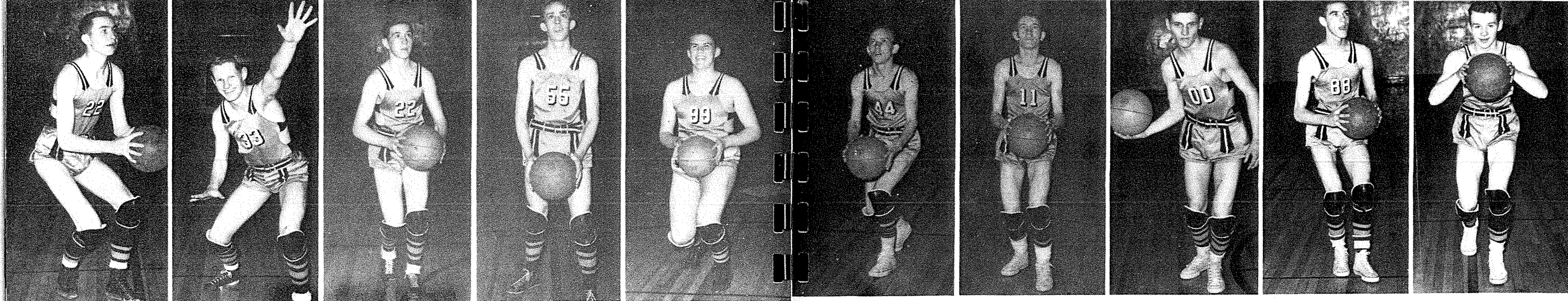
Allen



Left...Head Coach Kerner



Right...Assistant Coach Minton



Brown Byrne Heil Smith Eilers Hunt Pearson Orr Vancas Collins

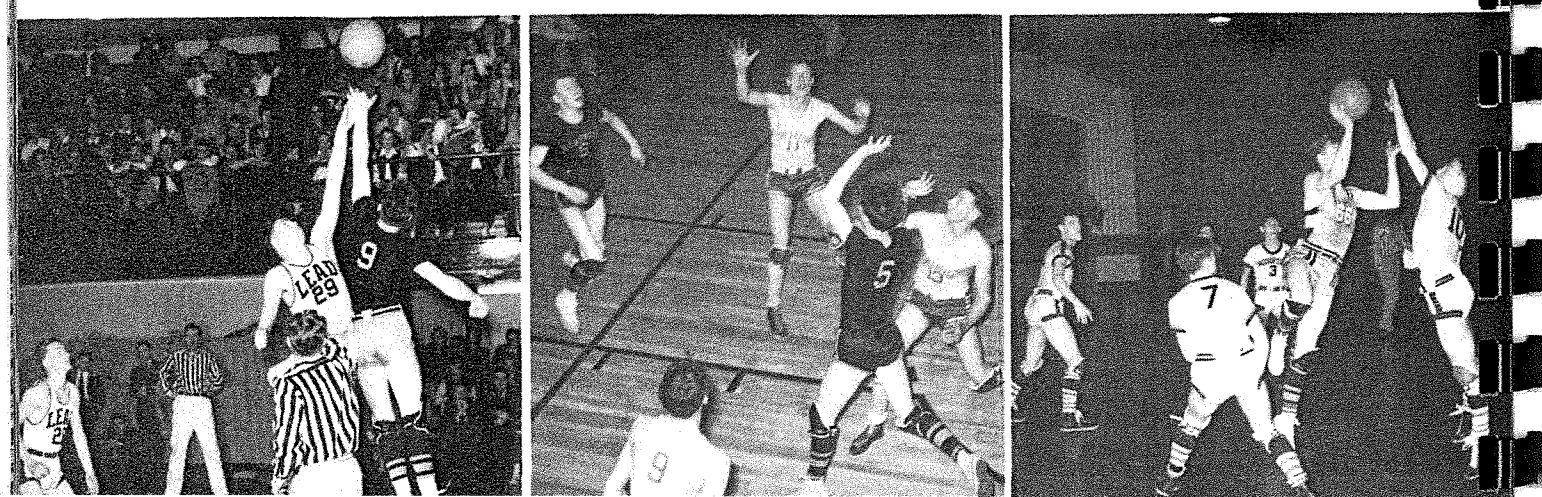


Opponents Cheer Together

Lyle's tops

"Where's the ball?"

District Tournament

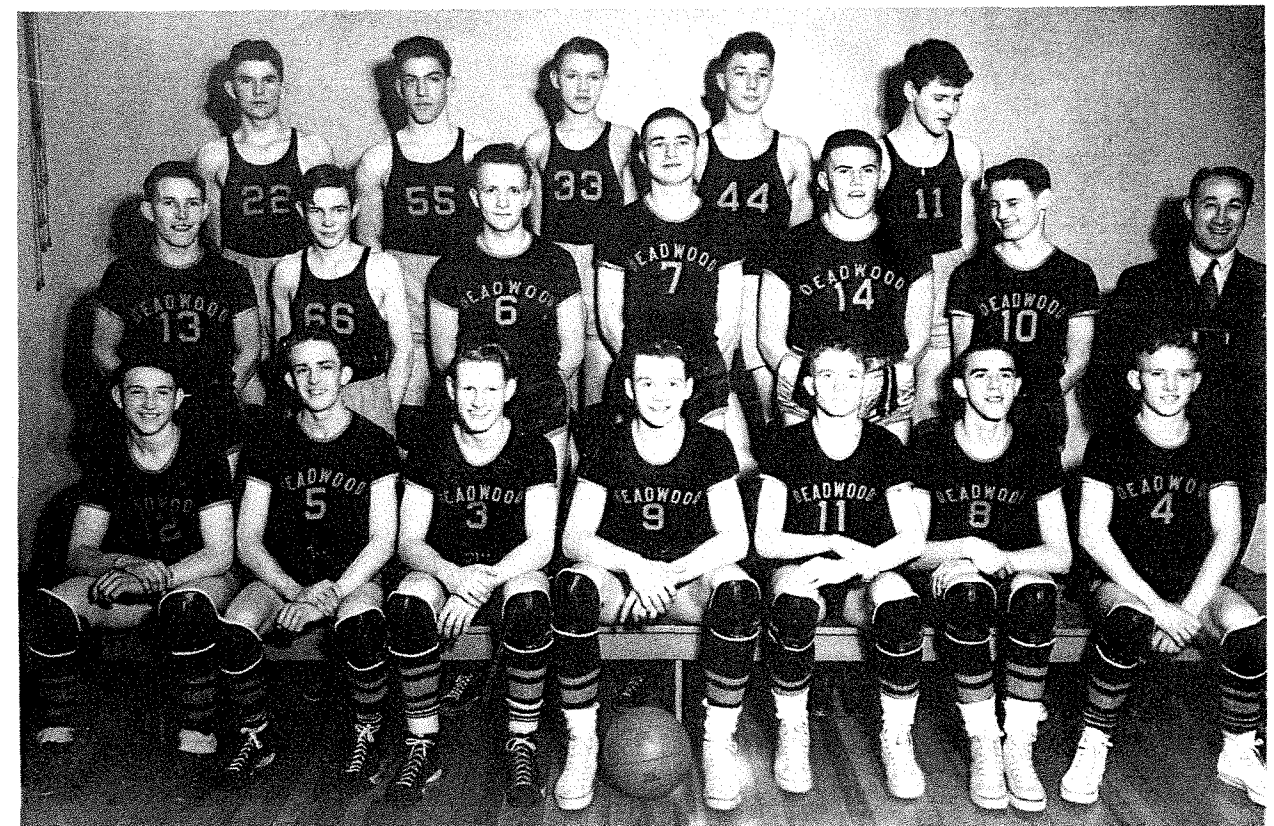


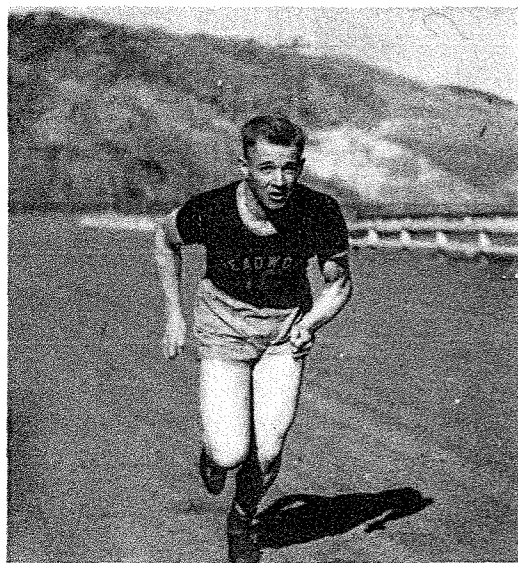
State B Champions '39-'40

Deadwood 20.....Vale 17	Deadwood 29....Belle Fourche 35	Deadwood 20.....Custer 24
Deadwood 24.....Lead 30	Deadwood 37.....Vale 25	Deadwood 14.....Lead 35
Deadwood 27.....Sturgis 26	Deadwood 25.....Spearfish 24	Deadwood 32.....Hot Springs 36
Deadwood 14.....Rapid City 50	Deadwood 18....Belle Fourche 24	Deadwood 28.....Hot Springs 45
Deadwood 22.....Rapid City 33	Deadwood 38.....Custer 24	Deadwood 22.....Sturgis 23
	Deadwood 19.....Spearfish 25	

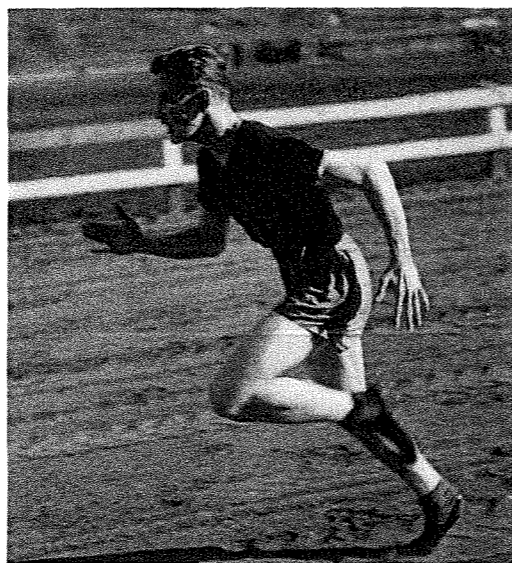
... BEARS!

Basketball Squad...Back row: Junior Erickson, Leonard Croghan, Wayne Starr, Mannie Dower, Robert Hallock. Middle row: Don Campbell, Lionel Asher, Bill Ewing, Edward Brown, Carl Eilers, Duane Orr, Coach Kerner. Front row: Don Heil, Bernard Smith, Don Byrne, Lyle Collins, Don Pearson, Paul Vancas, Harold Hunt.





Blaine Norton

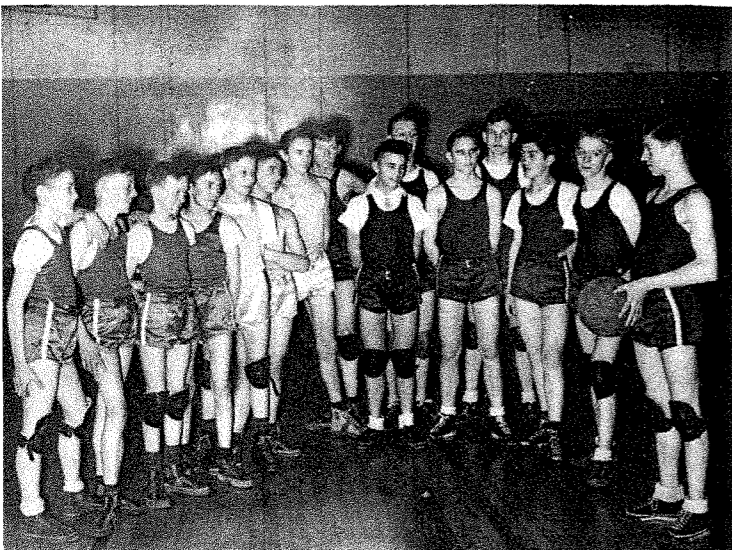


Kenneth Sanders

TRACKSTERS

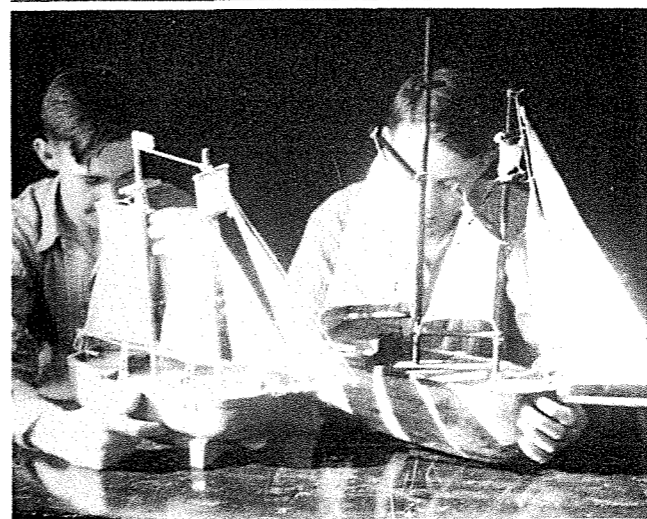
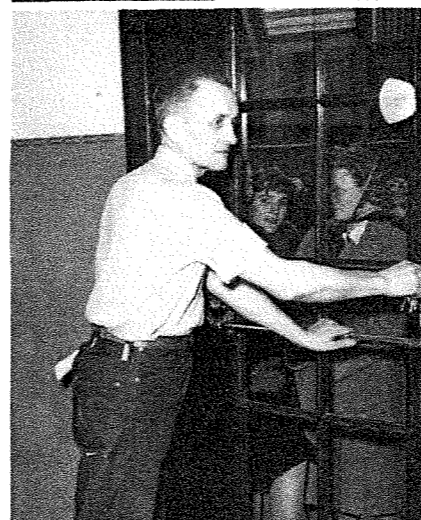
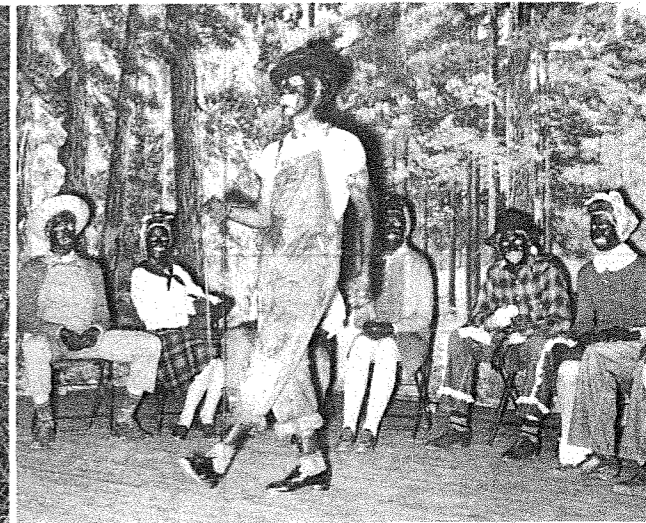


WEIGHT TEAMS



Heavyweights: Back row...Pat Hample, Ernest Sivertsen, Tommy Shedd, Glenn Hardy, Mannie Dower, Kenneth Aldrich, Donald Dahlburg, Lionel Asher. Front row...Bob Ware, Wayne Starr, Leonard Croghan, Jimmy Beck, Junior Erickson.

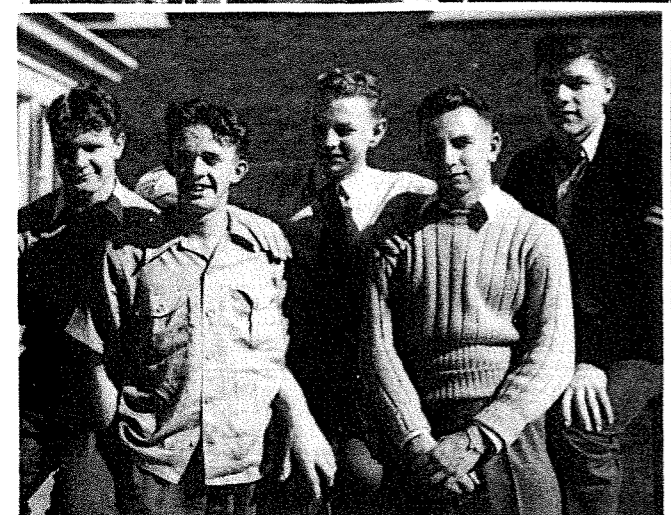
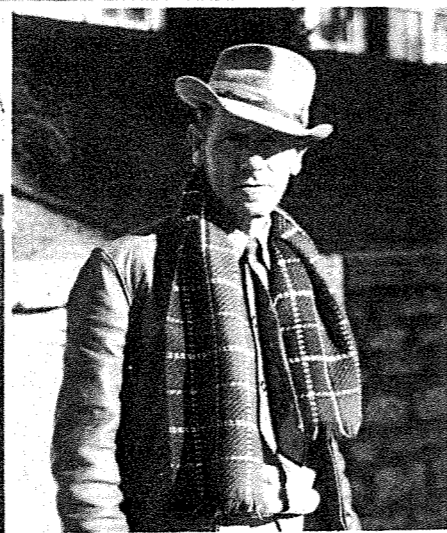
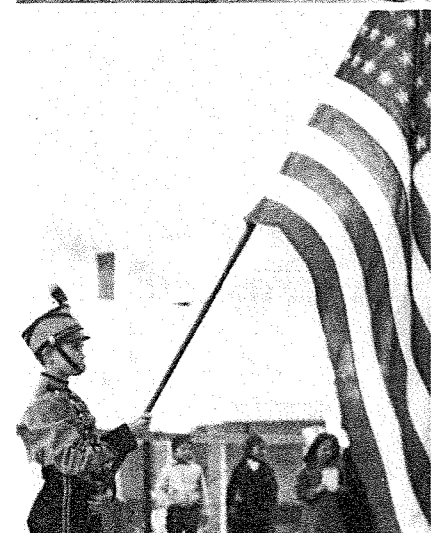
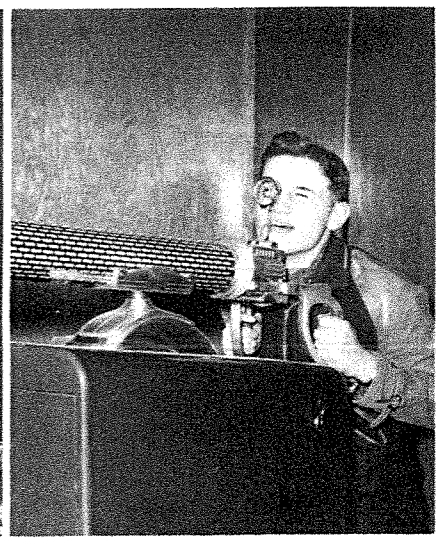
85-Pounders...Dick Nielsen, Donald Plummer, Roger Hegstrum, Richard Hegstrum. 100-Pounders... Jack Romanek, Urban Brandon, Bill Walker. 115-Pounders...David Titus, Charles Clifton, Bill Phalen, Charles Peyton, Jim Shedd, Joe Shea, Verlyne Larson, Erwin Schwecke.



O.H.S. DENIZENS . . .

Holst maneuvers under his mustachio...Honey-bears Don and Grace...Ready for the navy?...Eek!--a mouse! (Senior Play rehearsal)

Comfy, Vernie and Johnny?...



D. H. S. band...Umm, lunchtime...Hats off to our flag!...Stragglers...John, our bus driver...Some of the Rotary guests...Rolling down to D. H. S....

"Hep" addresses SDHSPA convention...Coach Kerner in disguise...Dead-eye Duane...Obviously a posed picture...Margie in from the country...A clean sweep by Mr. Chovaneic...Calvin, Pierre and Don, little homemakers...Backstage with Leonard—at the Junior Follies...Keep'em rolling, teachers!...Chil'dish, isn't it?...

OUR COMMUNITY FRIENDS

Auer Service	Hendrie & Bolthorff
Ayres Hardware	Homestake Mining Company
Ben Franklin Store	Frank S. Howe, M. D., F. A. C. S.
Dr. J. J. Berry	The Hub
Black Hills Amusement Company	Ike's Super Service Station
Black Hills Mercantile Company	Kathryn's Beauty Shop
Brown's Drug Store	Keller's Grocery
Buehler's Funeral Home	Kelley's Castle
City of Deadwood	Carl Kubler, Insurance
Continental Oil Company	Landis Shoe Shop
Davis Apparel Shop--Lead	Leo's Shoe Shop
Deadwood Drug Store	Dr. C. A. Leslie
Don's Slipper Shop	Mantas Candy Kitchen
Evergreen Food Market	George Moses
Ewing's Barber Shop	Newell Drug Store
Ray Ewing's Paint Shop	New York Store
F. & M. Bootery	Rice & Bettelheim, Attorneys
Finola's Store--Lead	Herb Rotter's Barber Shop
First National Bank of the Black Hills	Ruth Brothers
The Fish and Hunter Company	William Sasse Grocery
Franklin Cafe	Schulte Mortuary
Franklin Hotel	Singer Sporting Goods
Gamble Store	Swander Baking Company
Gold Nugget Recreational Parlor	Trolley Car Cafe
Grab It 'N Growl	Wagner Hotel & Cafe
Harter Dance Studio	Chas. E. Wells Music Company

Our appreciation is sincerely extended
to the above business firms and individuals
who helped to make this annual possible.

Bear Echoes Staff
and
Deadwood High School